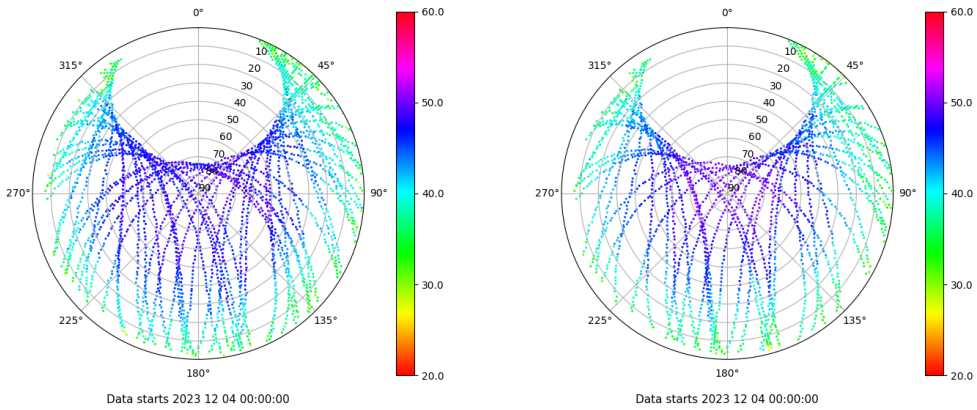


Control de calidad GNSS GPS diario

Estacion: XIX1
 Fecha: 2023 12 04
 Dia del año: 338

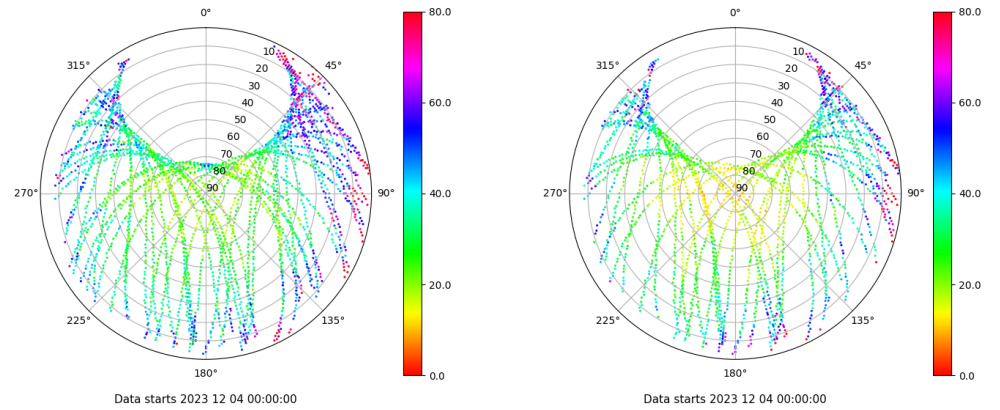
Señal-Ruido GPS L1 y L2

Skyplot for station XIX1. Signal to Noise S1C Data file XIX100ESP_R_2023338.xtr Skyplot for station XIX1. Signal to Noise S2X Data file XIX100ESP_R_2023338.xtr



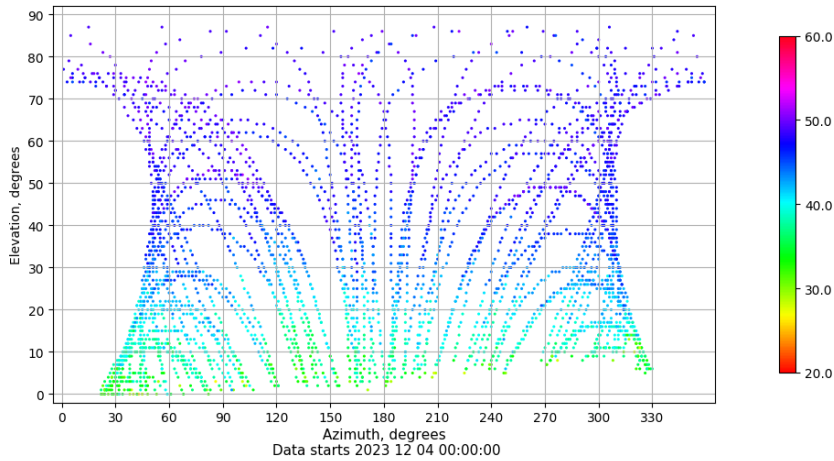
Multipath GPS L1 y L2

Skyplot for station XIX1. Parameter M1C Data file XIX100ESP_R_2023338.xtr Skyplot for station XIX1. Parameter M2X Data file XIX100ESP_R_2023338.xtr



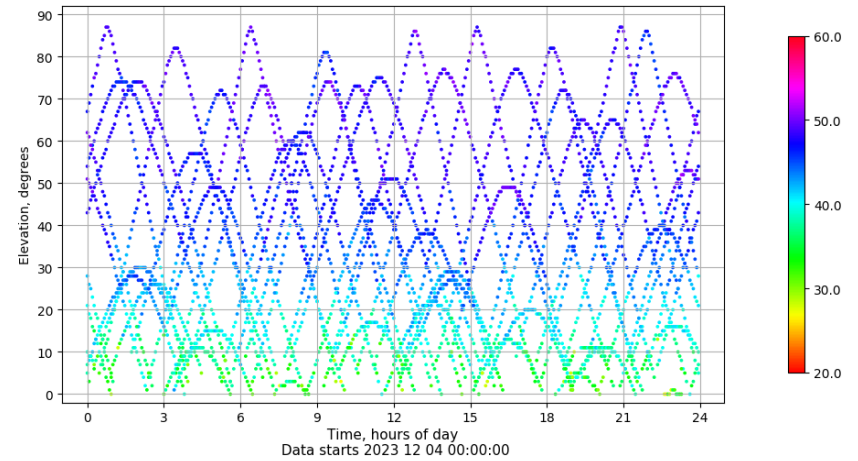
Azimuth-Elevacion

Azimuth-elevation plot for station XIX1. Signal to Noise S1C Data file XIX100ESP_R_2023338.xtr



Tiempo-Elevacion

Time-elevation plot for station XIX1. Signal to Noise S1C Data file XIX100ESP_R_2023338.xtr

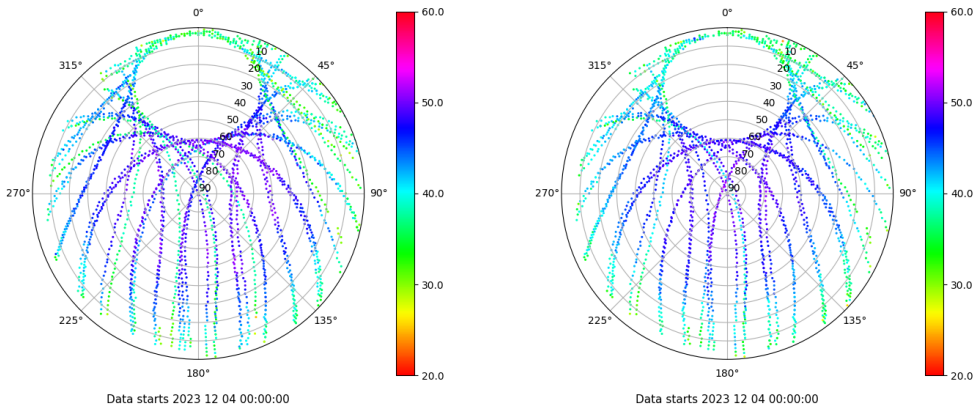


Control de calidad GNSS GLO diario

Estacion: XIX1
 Fecha: 2023 12 04
 Dia del año: 338

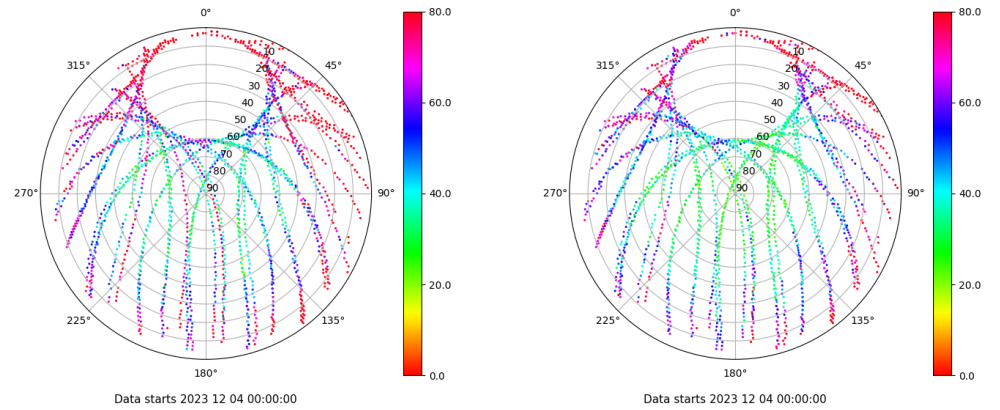
Señal-Ruido GLO L1 y L2

Skyplot for station XIX1. Signal to Noise S1C Data file XIX100ESP_R_2023338.xtr Skyplot for station XIX1. Signal to Noise S2C Data file XIX100ESP_R_2023338.xtr



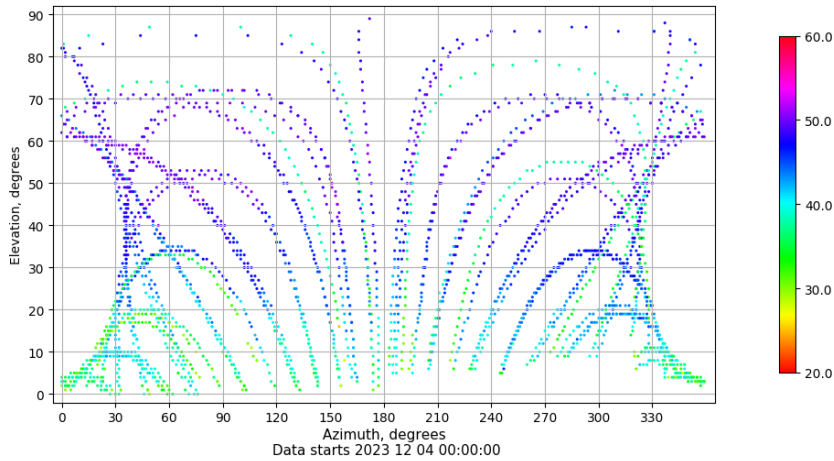
Multipath GLO L1 y L2

Skyplot for station XIX1. Parameter M1C Data file XIX100ESP_R_2023338.xtr Skyplot for station XIX1. Parameter M2C Data file XIX100ESP_R_2023338.xtr



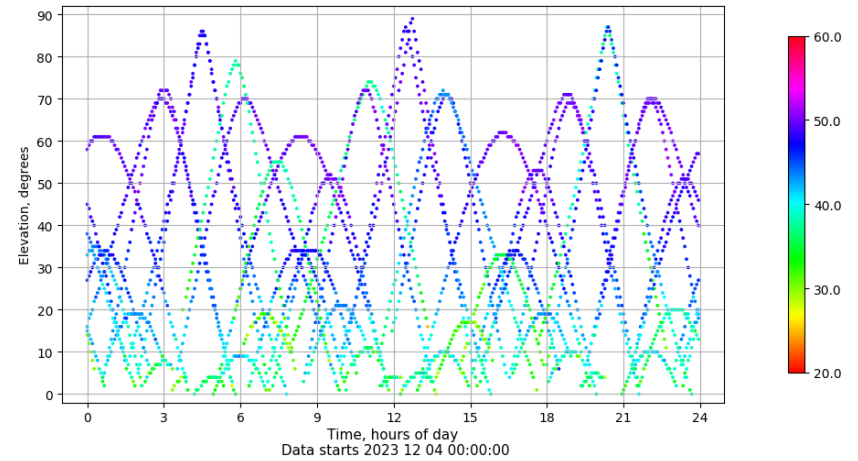
Azimuth-Elevacion

Azimuth-elevation plot for station XIX1. Signal to Noise S1C Data file XIX100ESP_R_2023338.xtr



Tiempo-Elevacion

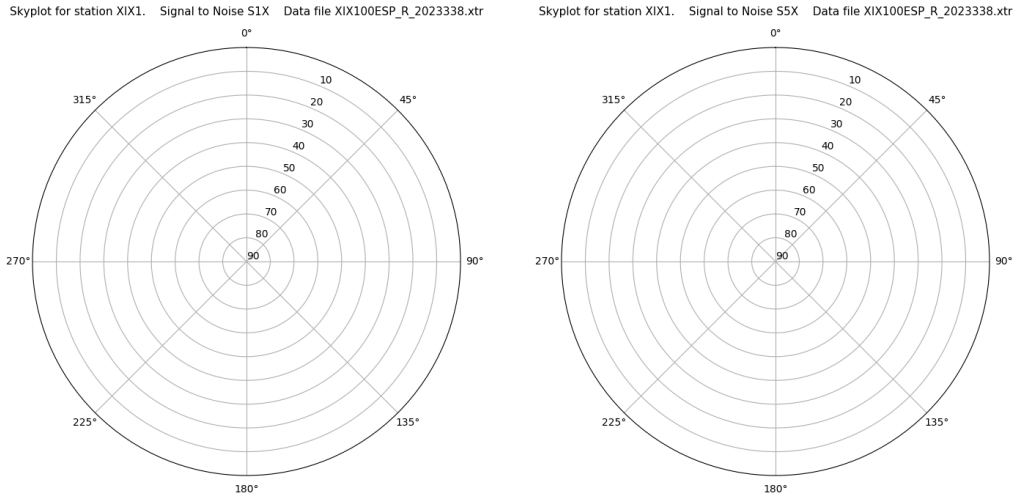
Time-elevation plot for station XIX1. Signal to Noise S1C Data file XIX100ESP_R_2023338.xtr



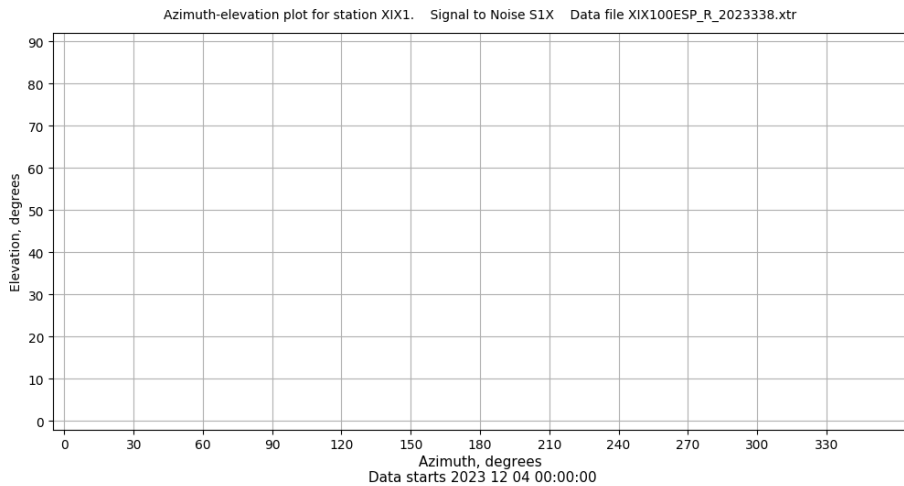
Control de calidad GNSS GAL diario

Estacion: XIX1
 Fecha: 2023 12 04
 Dia del año: 338

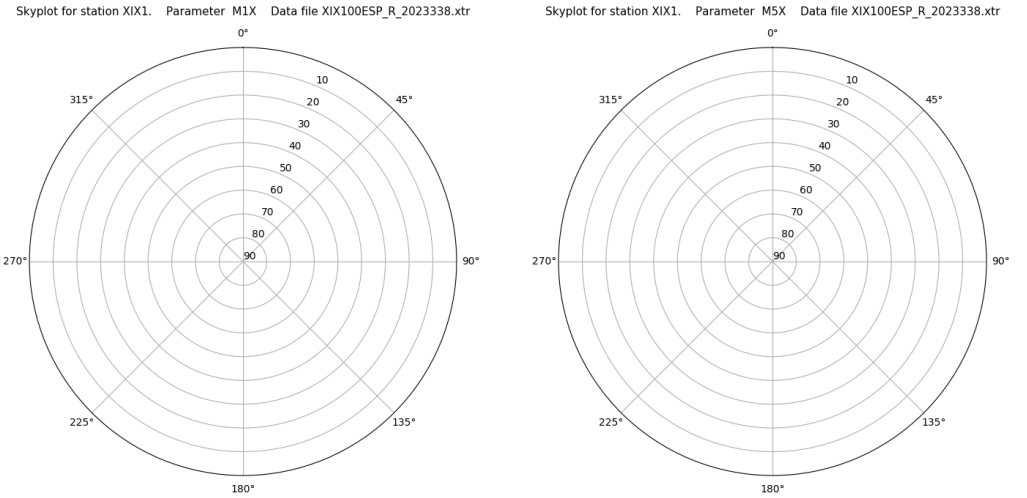
Señal-Ruido GAL E1 y E5



Azimut-Elevacion



Multipath GAL E1 y E5



Tiempo-Elevacion

