

# Control de calidad GNSS GPS diario

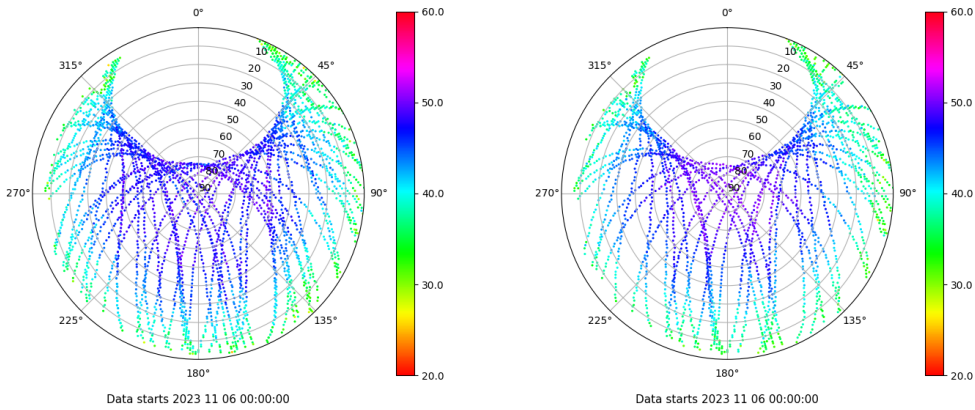
Estacion: XIX1

Fecha: 2023 11 06

Dia del año: 310

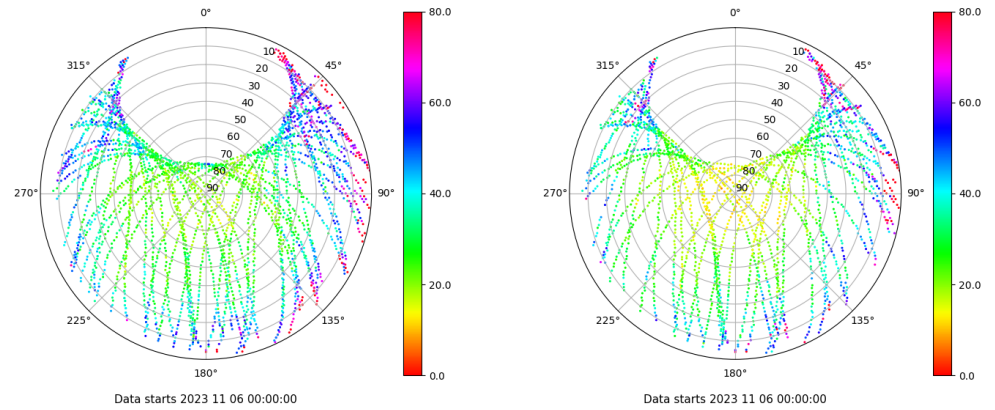
## Señal-Ruido GPS L1 y L2

Skyplot for station XIX1. Signal to Noise S1C Data file XIX100ESP\_R\_2023310.xtr Skyplot for station XIX1. Signal to Noise S2X Data file XIX100ESP\_R\_2023310.xtr



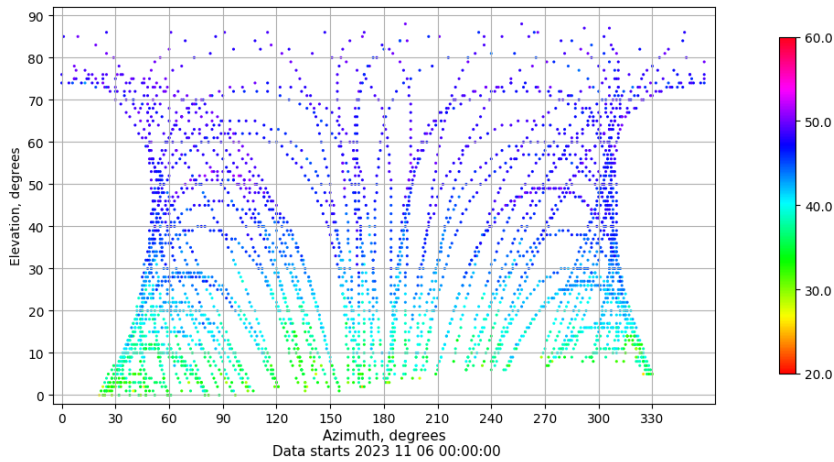
## Multipath GPS L1 y L2

Skyplot for station XIX1. Parameter M1C Data file XIX100ESP\_R\_2023310.xtr Skyplot for station XIX1. Parameter M2X Data file XIX100ESP\_R\_2023310.xtr



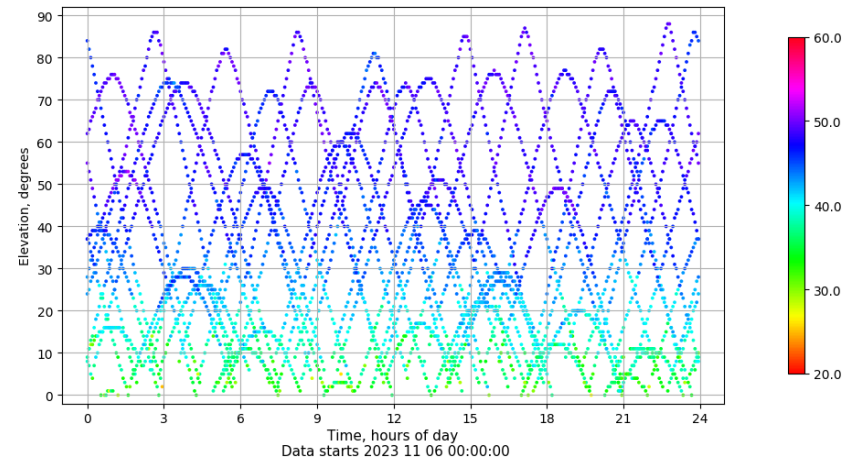
## Azimuth-Elevacion

Azimuth-elevation plot for station XIX1. Signal to Noise S1C Data file XIX100ESP\_R\_2023310.xtr



## Tiempo-Elevacion

Time-elevation plot for station XIX1. Signal to Noise S1C Data file XIX100ESP\_R\_2023310.xtr

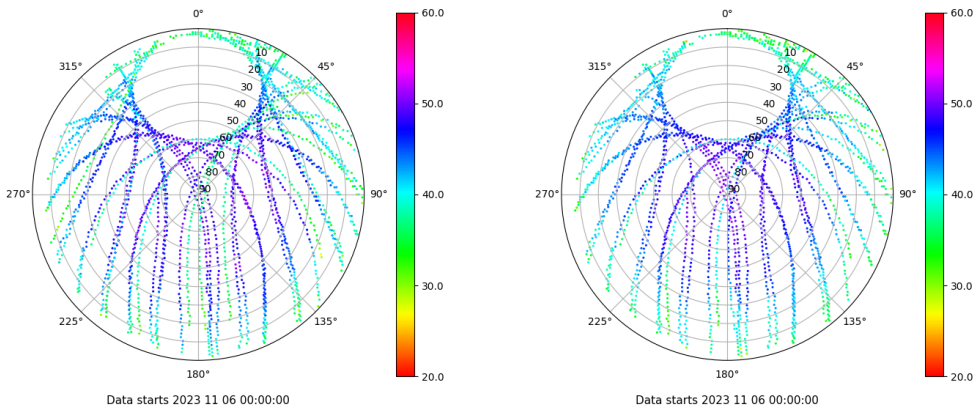


# Control de calidad GNSS GLO diario

Estacion: XIX1  
 Fecha: 2023 11 06  
 Dia del año: 310

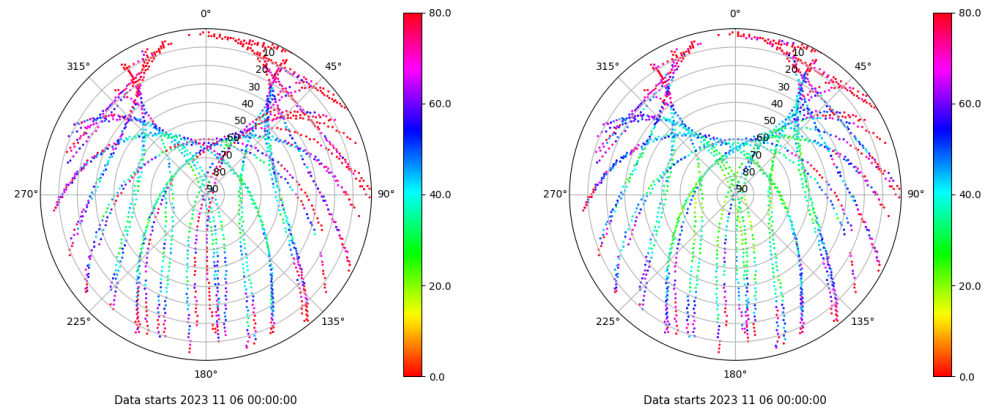
## Señal-Ruido GLO L1 y L2

Skyplot for station XIX1. Signal to Noise S1C Data file XIX100ESP\_R\_2023310.xtr Skyplot for station XIX1. Signal to Noise S2C Data file XIX100ESP\_R\_2023310.xtr



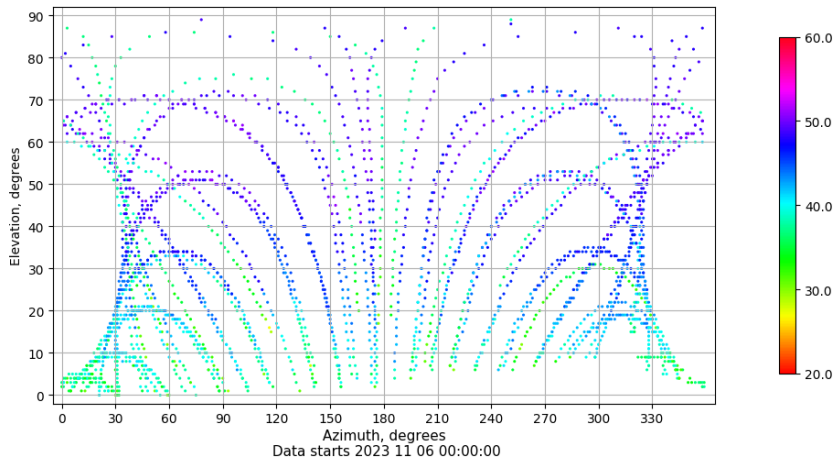
## Multipath GLO L1 y L2

Skyplot for station XIX1. Parameter M1C Data file XIX100ESP\_R\_2023310.xtr Skyplot for station XIX1. Parameter M2C Data file XIX100ESP\_R\_2023310.xtr



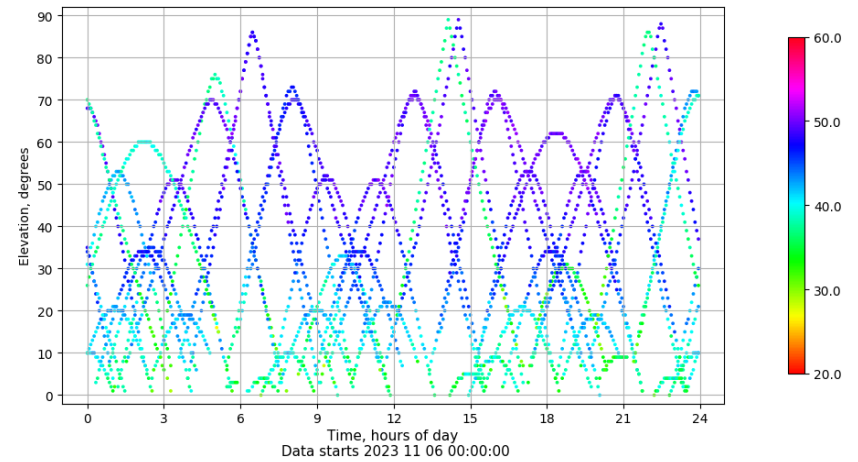
## Azimuth-Elevacion

Azimuth-elevation plot for station XIX1. Signal to Noise S1C Data file XIX100ESP\_R\_2023310.xtr



## Tiempo-Elevacion

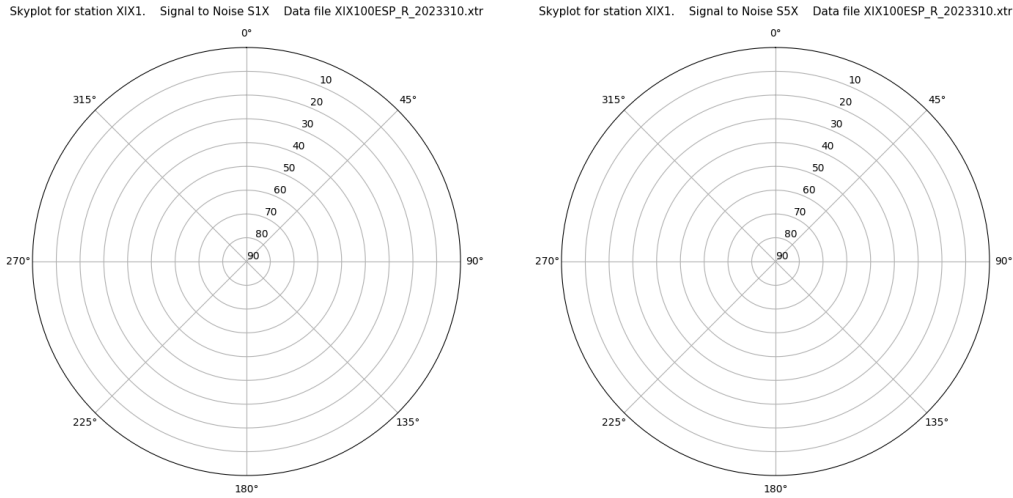
Time-elevation plot for station XIX1. Signal to Noise S1C Data file XIX100ESP\_R\_2023310.xtr



# Control de calidad GNSS GAL diario

Estacion: XIX1  
 Fecha: 2023 11 06  
 Dia del año: 310

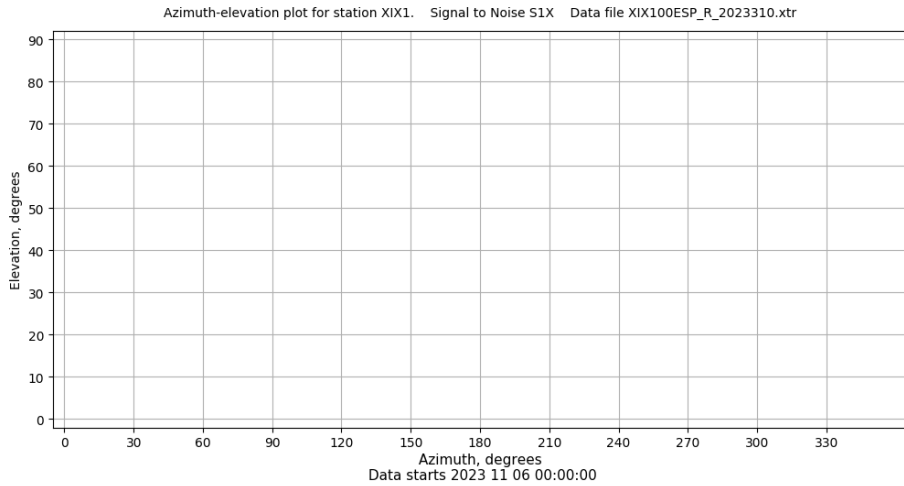
## Señal-Ruido GAL E1 y E5



Data starts 2023 11 06 00:00:00

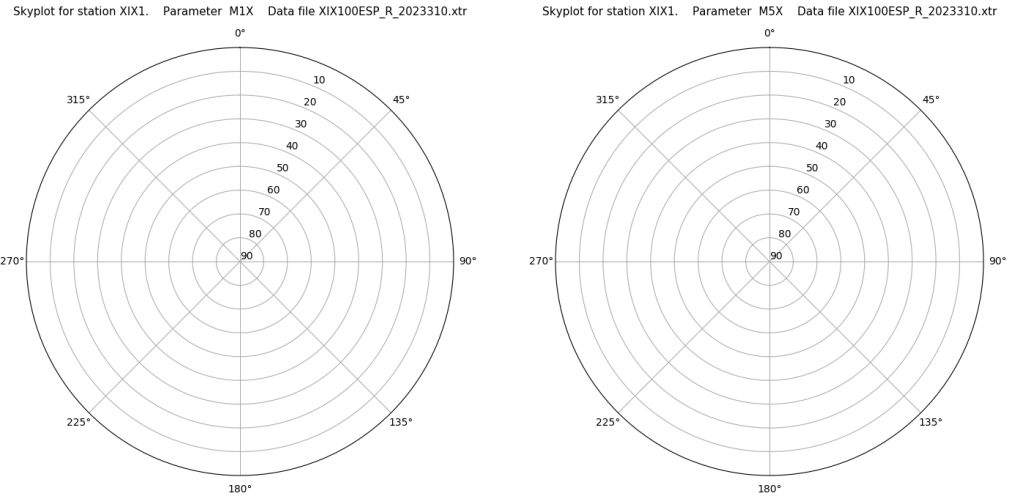
Data starts 2023 11 06 00:00:00

## Azimut-Elevacion



Data starts 2023 11 06 00:00:00

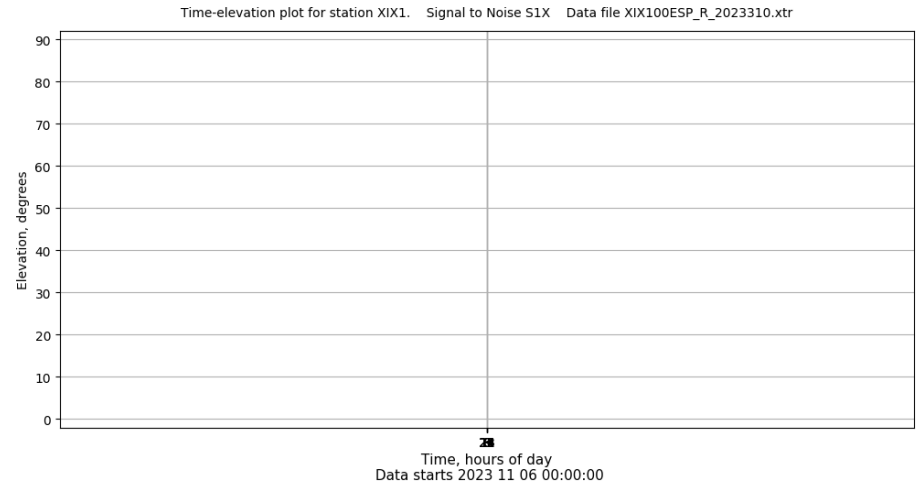
## Multipath GAL E1 y E5



Data starts 2023 11 06 00:00:00

Data starts 2023 11 06 00:00:00

## Tiempo-Elevacion



Data starts 2023 11 06 00:00:00