

# Control de calidad GNSS GPS diario

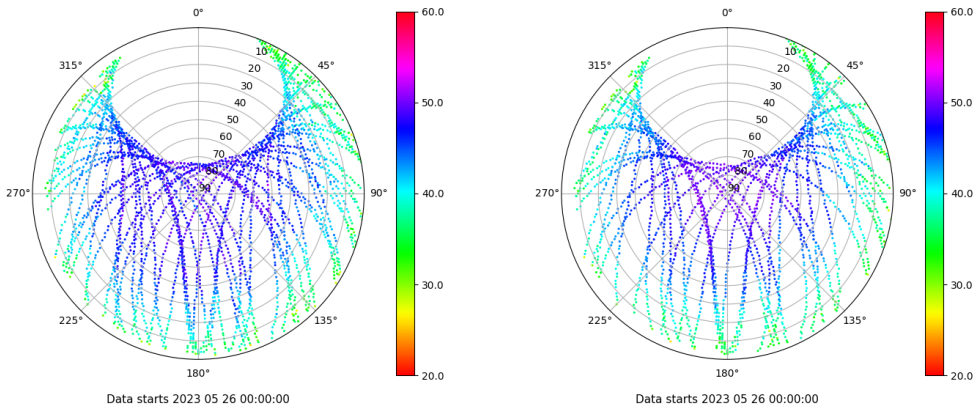
Estacion: XIX1

Fecha: 2023 05 26

Dia del año: 146

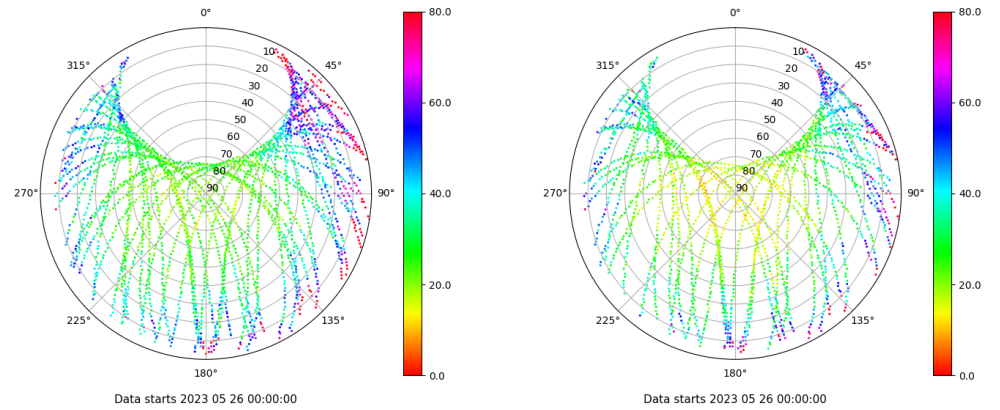
## Señal-Ruido GPS L1 y L2

Skyplot for station XIX1. Signal to Noise S1C Data file XIX100ESP\_R\_2023146.xtr Skyplot for station XIX1. Signal to Noise S2X Data file XIX100ESP\_R\_2023146.xtr



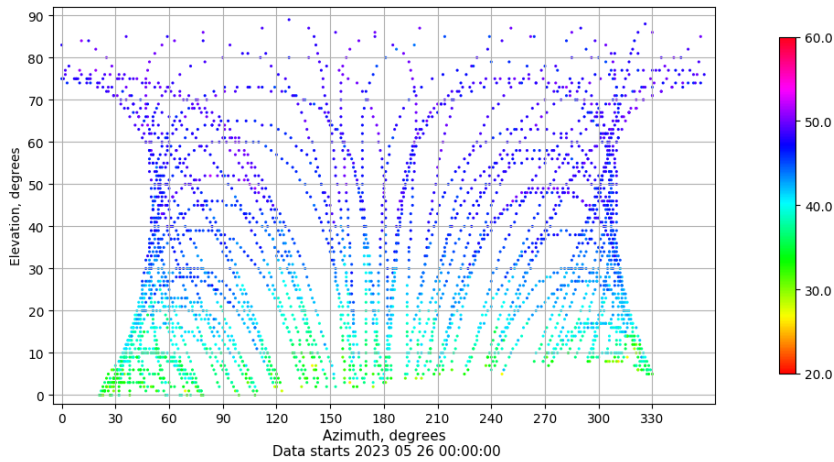
## Multipath GPS L1 y L2

Skyplot for station XIX1. Parameter M1C Data file XIX100ESP\_R\_2023146.xtr Skyplot for station XIX1. Parameter M2X Data file XIX100ESP\_R\_2023146.xtr



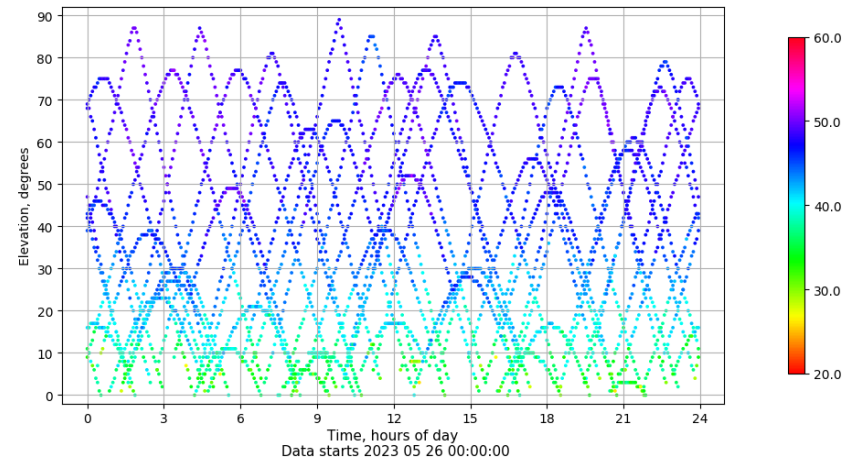
## Azimuth-Elevacion

Azimuth-elevation plot for station XIX1. Signal to Noise S1C Data file XIX100ESP\_R\_2023146.xtr



## Tiempo-Elevacion

Time-elevation plot for station XIX1. Signal to Noise S1C Data file XIX100ESP\_R\_2023146.xtr

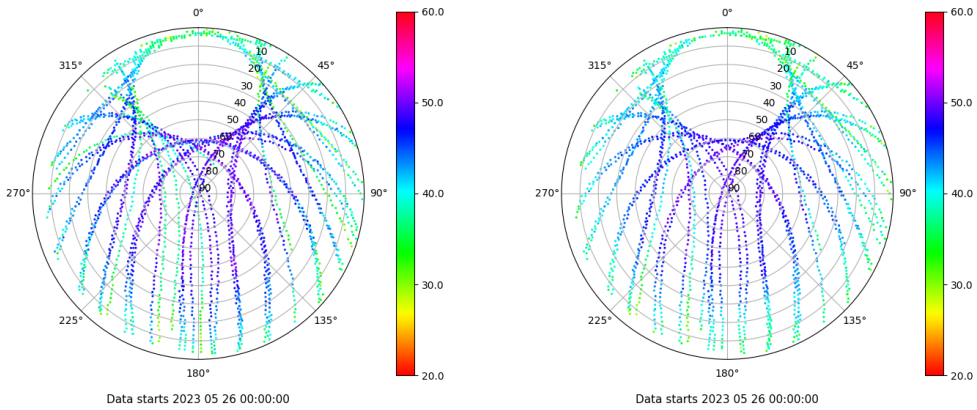


# Control de calidad GNSS GLO diario

Estacion: XIX1  
 Fecha: 2023 05 26  
 Dia del año: 146

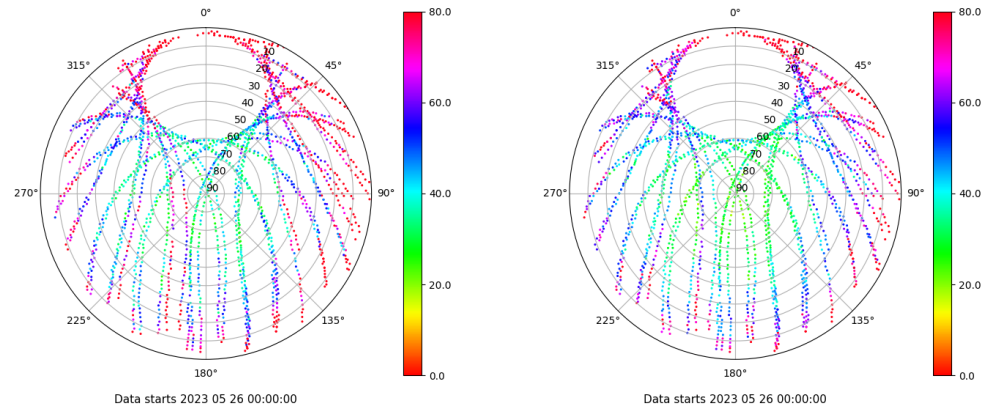
## Señal-Ruido GLO L1 y L2

Skyplot for station XIX1. Signal to Noise S1C Data file XIX100ESP\_R\_2023146.xtr Skyplot for station XIX1. Signal to Noise S2C Data file XIX100ESP\_R\_2023146.xtr



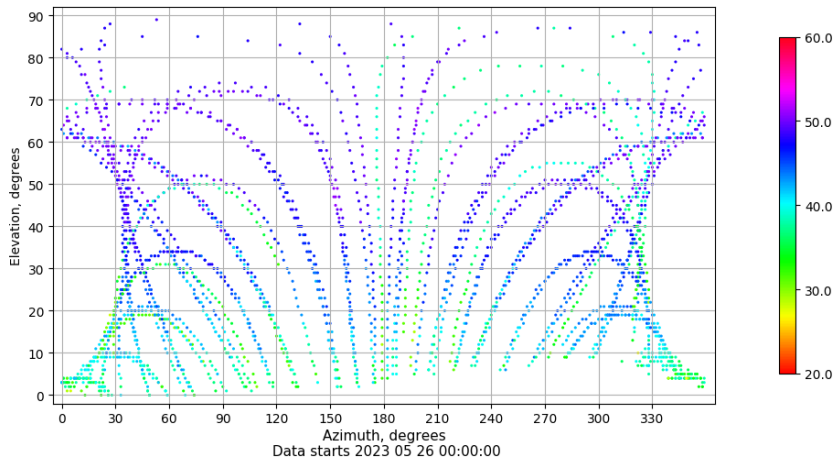
## Multipath GLO L1 y L2

Skyplot for station XIX1. Parameter M1C Data file XIX100ESP\_R\_2023146.xtr Skyplot for station XIX1. Parameter M2C Data file XIX100ESP\_R\_2023146.xtr



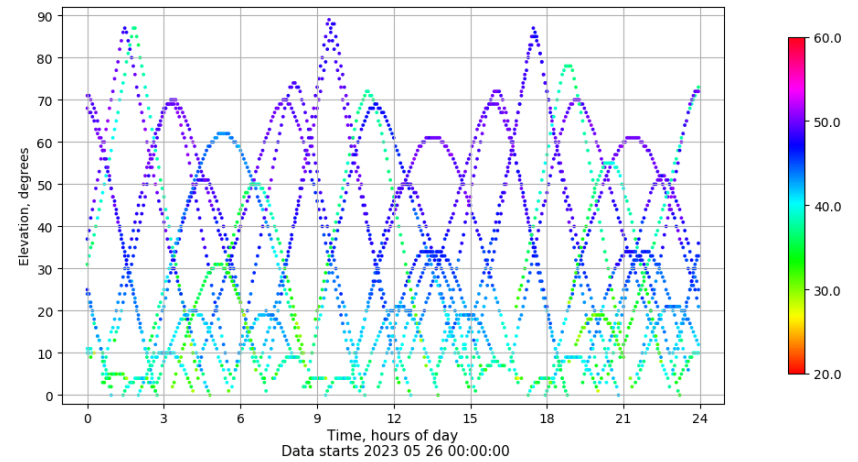
## Azimuth-Elevacion

Azimuth-elevation plot for station XIX1. Signal to Noise S1C Data file XIX100ESP\_R\_2023146.xtr



## Tiempo-Elevacion

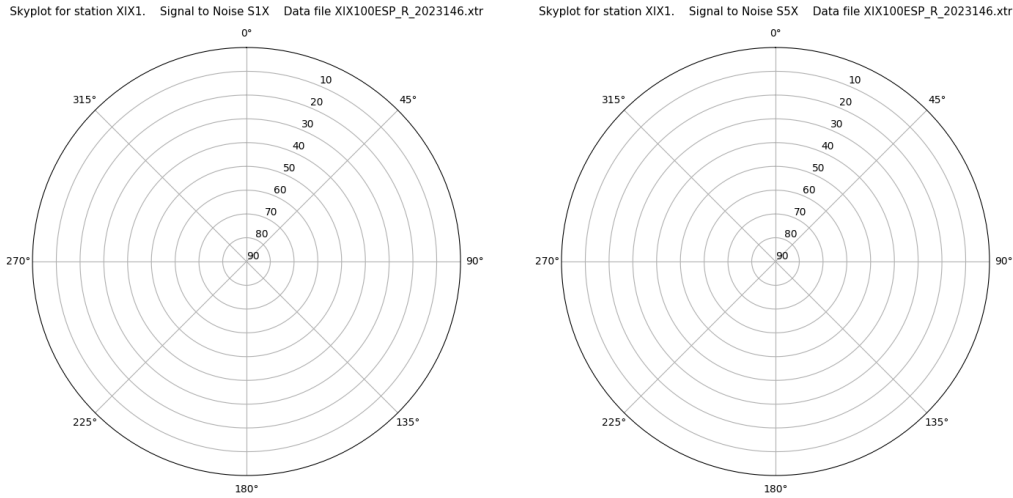
Time-elevation plot for station XIX1. Signal to Noise S1C Data file XIX100ESP\_R\_2023146.xtr



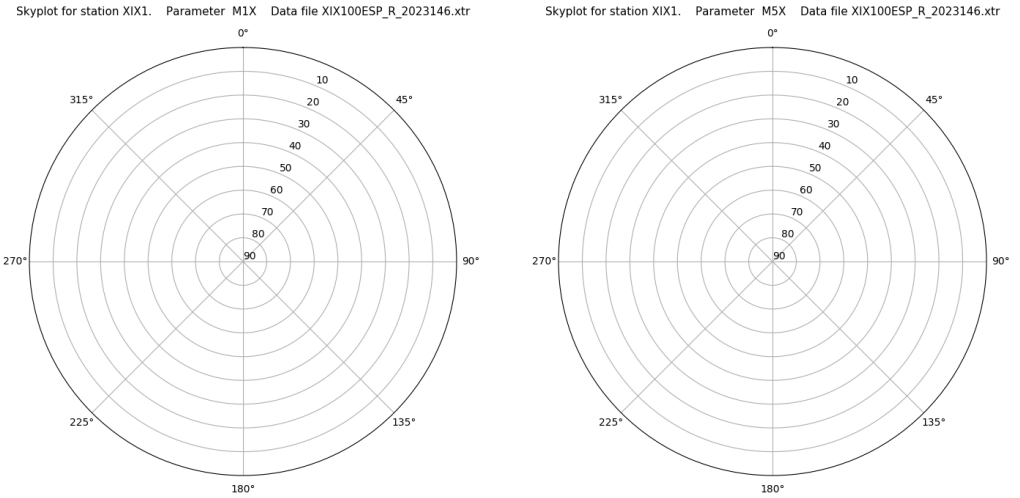
# Control de calidad GNSS GAL diario

Estacion: XIX1  
Fecha: 2023 05 26  
Dia del año: 146

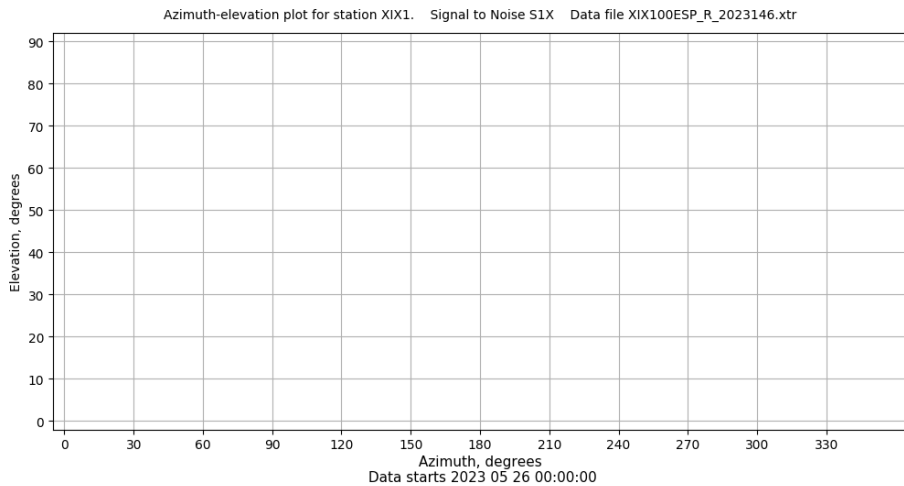
## Señal-Ruido GAL E1 y E5



## Multipath GAL E1 y E5



## Azimut-Elevacion



## Tiempo-Elevacion

