

Control de calidad GNSS GPS diario

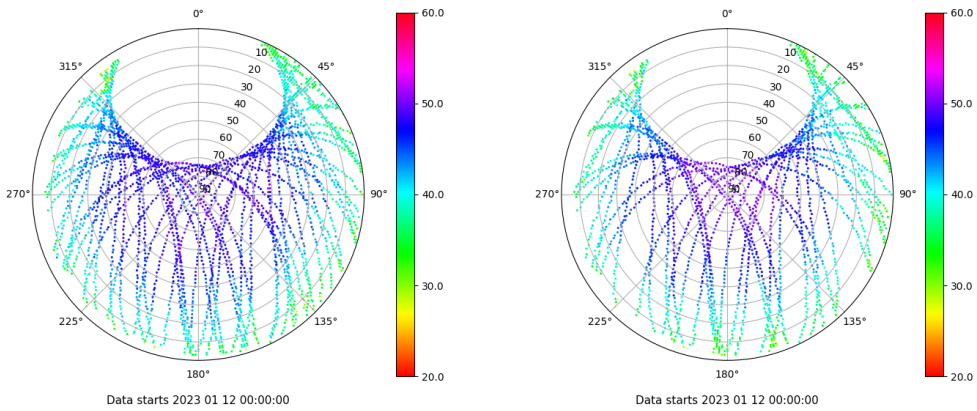
Estacion: XIX1

Fecha: 2023 01 12

Dia del año: 012

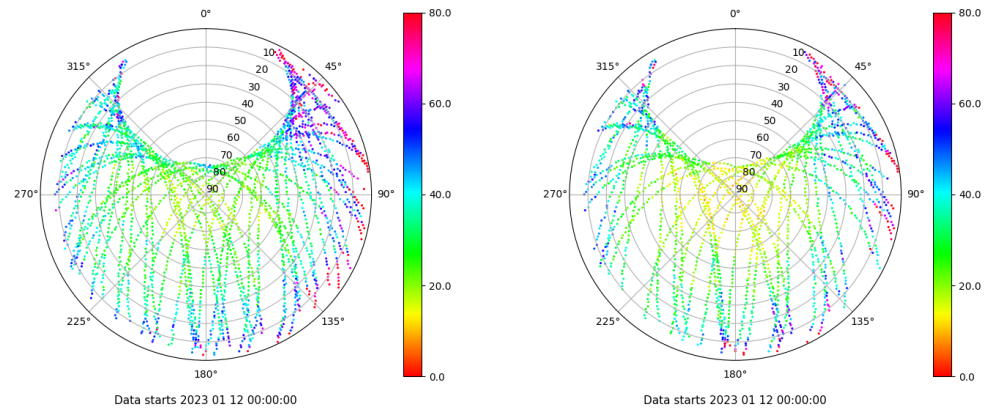
Señal-Ruido GPS L1 y L2

Skyplot for station XIX1. Signal to Noise S1C Data file XIX100ESP_R_2023012.xtr Skyplot for station XIX1. Signal to Noise S2X Data file XIX100ESP_R_2023012.xtr



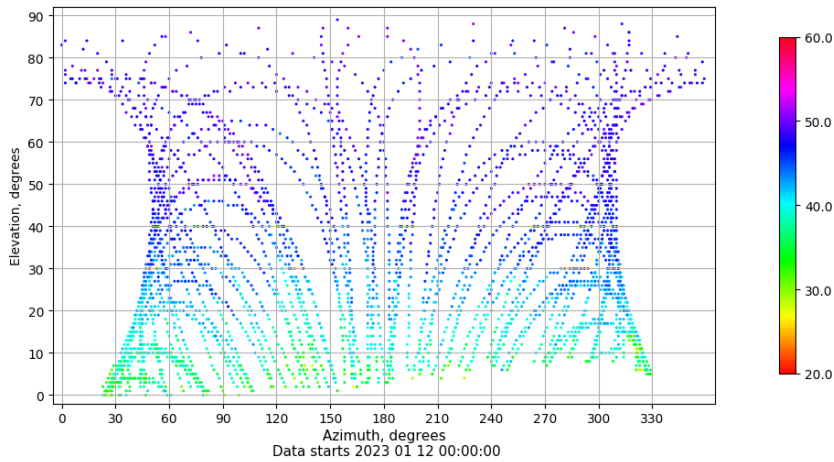
Multipath GPS L1 y L2

Skyplot for station XIX1. Parameter M1C Data file XIX100ESP_R_2023012.xtr Skyplot for station XIX1. Parameter M2X Data file XIX100ESP_R_2023012.xtr



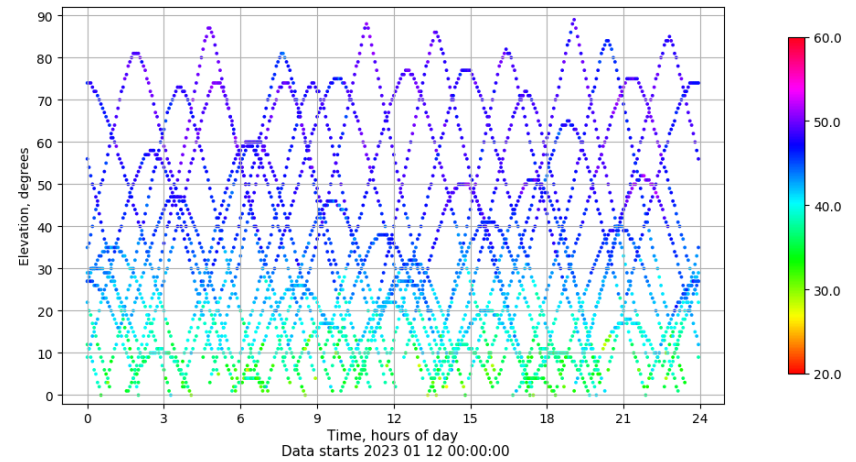
Azimuth-Elevacion

Azimuth-elevation plot for station XIX1. Signal to Noise S1C Data file XIX100ESP_R_2023012.xtr



Tiempo-Elevacion

Time-elevation plot for station XIX1. Signal to Noise S1C Data file XIX100ESP_R_2023012.xtr

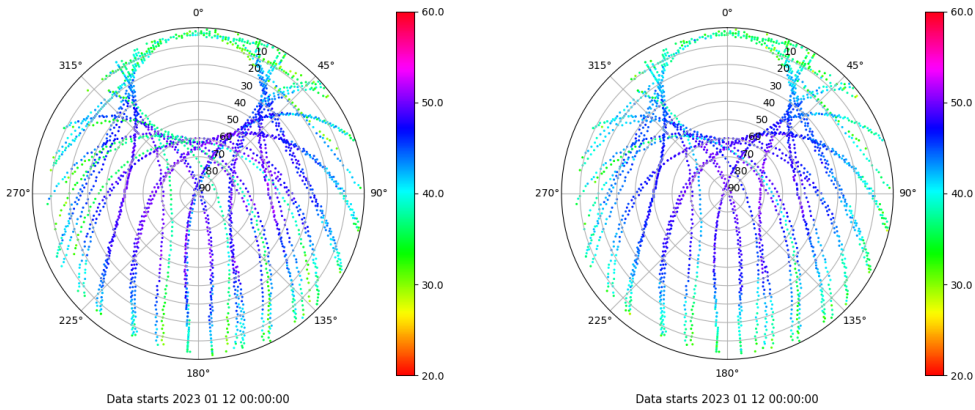


Control de calidad GNSS GLO diario

Estacion: XIX1
 Fecha: 2023 01 12
 Dia del año: 012

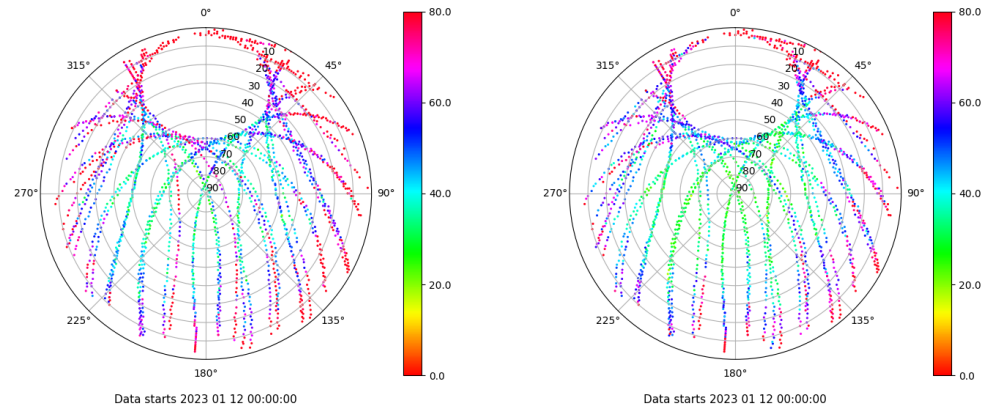
Señal-Ruido GLO L1 y L2

Skyplot for station XIX1. Signal to Noise S1C Data file XIX100ESP_R_2023012.xtr Skyplot for station XIX1. Signal to Noise S2C Data file XIX100ESP_R_2023012.xtr



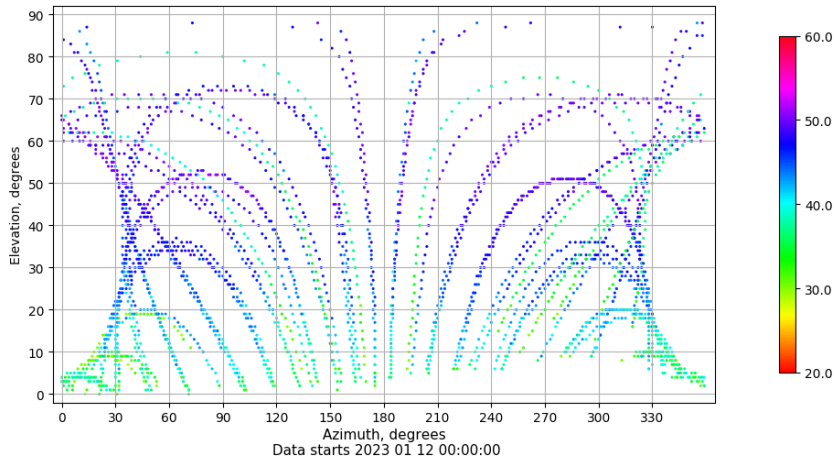
Multipath GLO L1 y L2

Skyplot for station XIX1. Parameter M1C Data file XIX100ESP_R_2023012.xtr Skyplot for station XIX1. Parameter M2C Data file XIX100ESP_R_2023012.xtr



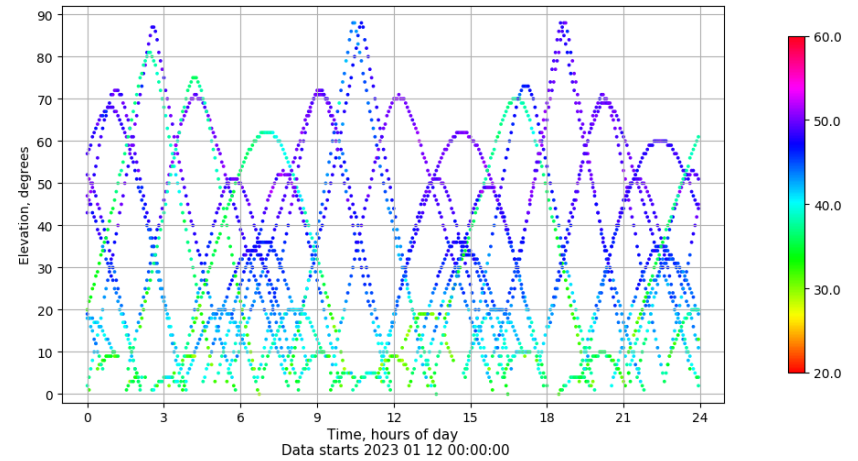
Azimuth-Elevacion

Azimuth-elevation plot for station XIX1. Signal to Noise S1C Data file XIX100ESP_R_2023012.xtr



Tiempo-Elevacion

Time-elevation plot for station XIX1. Signal to Noise S1C Data file XIX100ESP_R_2023012.xtr



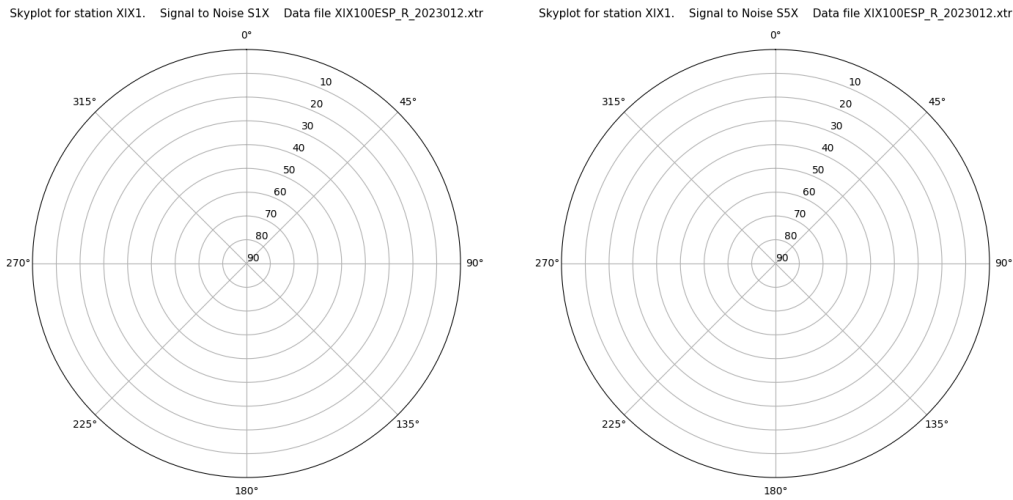
Control de calidad GNSS GAL diario

Estacion: XIX1

Fecha: 2023 01 12

Dia del año: 012

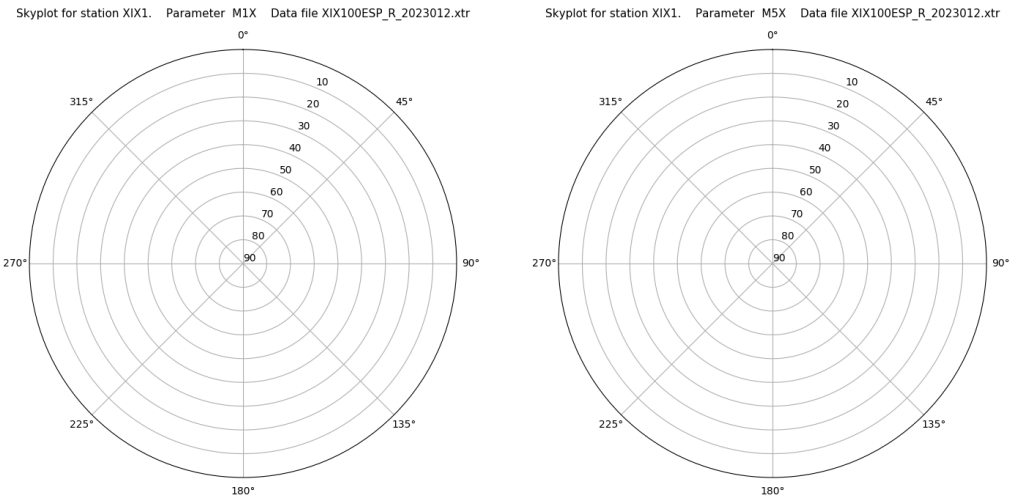
Señal-Ruido GAL E1 y E5



Data starts 2023 01 12 00:00:00

Data starts 2023 01 12 00:00:00

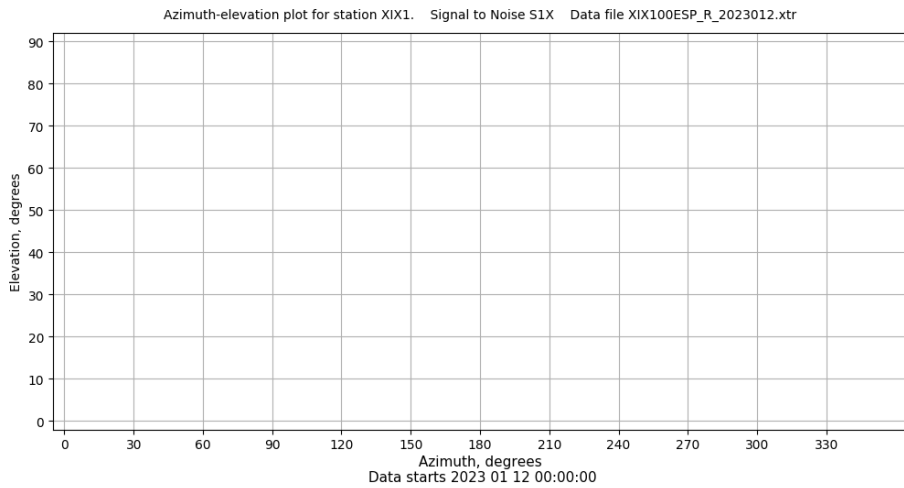
Multipath GAL E1 y E5



Data starts 2023 01 12 00:00:00

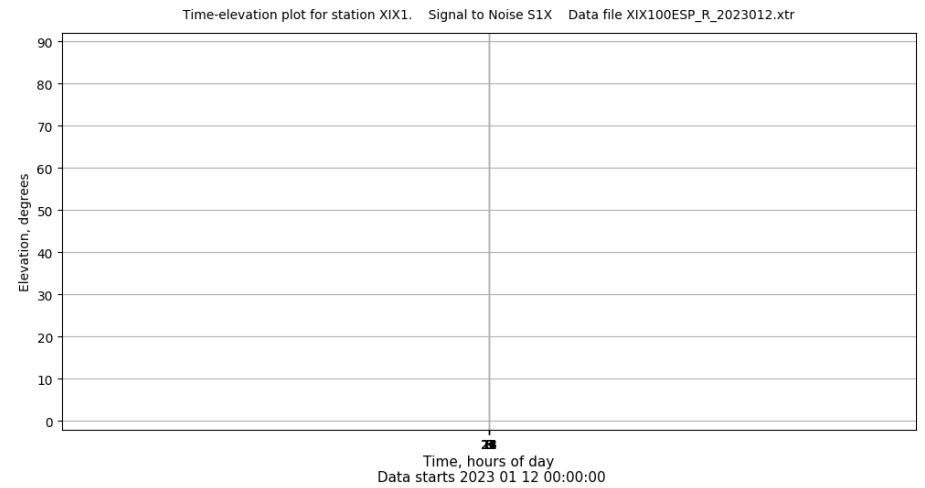
Data starts 2023 01 12 00:00:00

Azimut-Elevacion



Data starts 2023 01 12 00:00:00

Tiempo-Elevacion



Data starts 2023 01 12 00:00:00