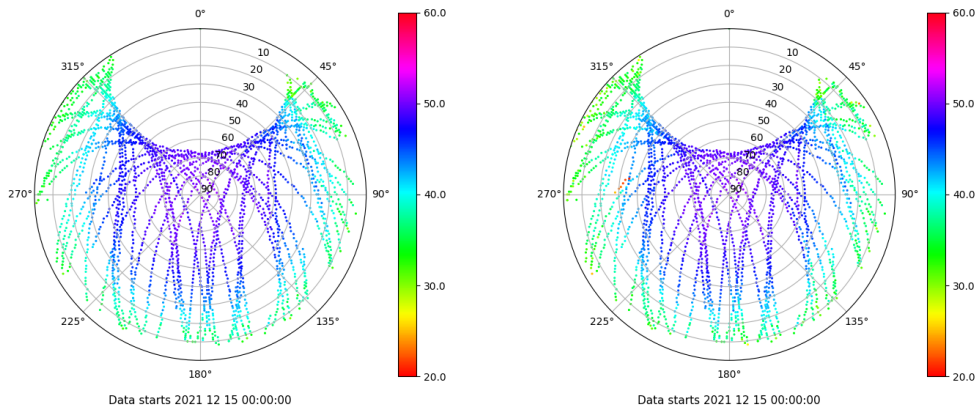


Control de calidad GNSS GPS diario

Estacion: VICA
 Fecha: 2021 12 15
 Dia del año: 349

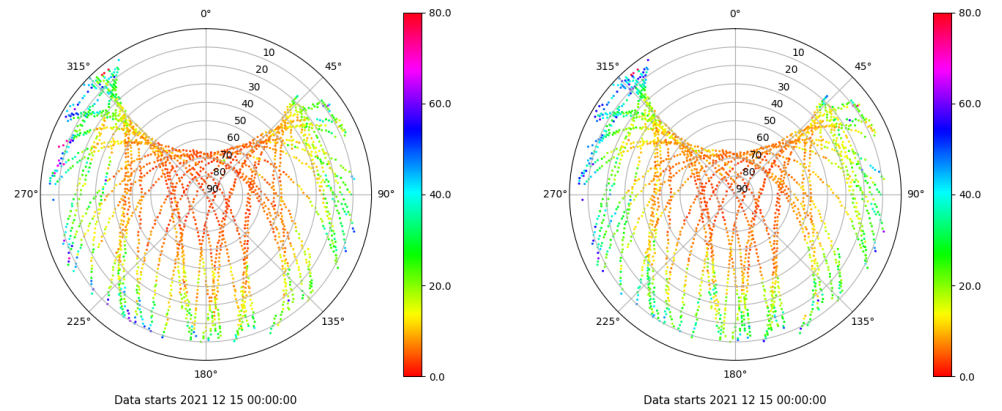
Señal-Ruido GPS L1 y L2

Skyplot for station VICA. Signal to Noise S1C Data file VICA00ESP_R_2021349.xtr Skyplot for station VICA. Signal to Noise S2W Data file VICA00ESP_R_2021349.xtr



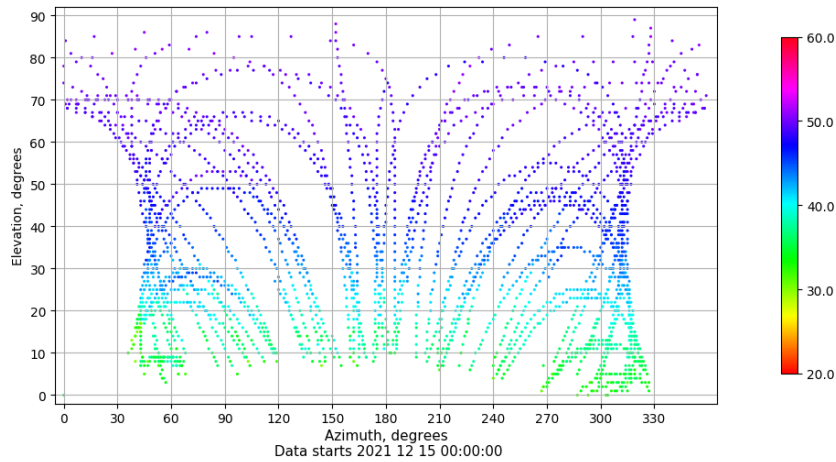
Multipath GPS L1 y L2

Skyplot for station VICA. Parameter M1C Data file VICA00ESP_R_2021349.xtr Skyplot for station VICA. Parameter M2W Data file VICA00ESP_R_2021349.xtr



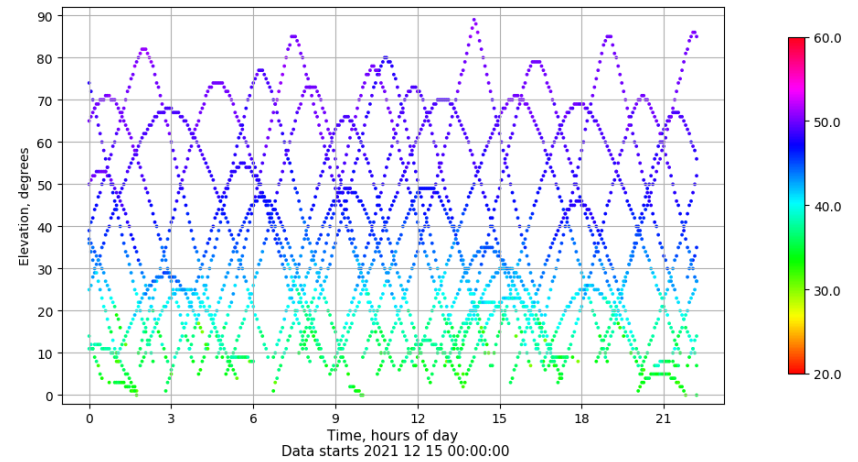
Azimuth-Elevacion

Azimuth-elevation plot for station VICA. Signal to Noise S1C Data file VICA00ESP_R_2021349.xtr



Tiempo-Elevacion

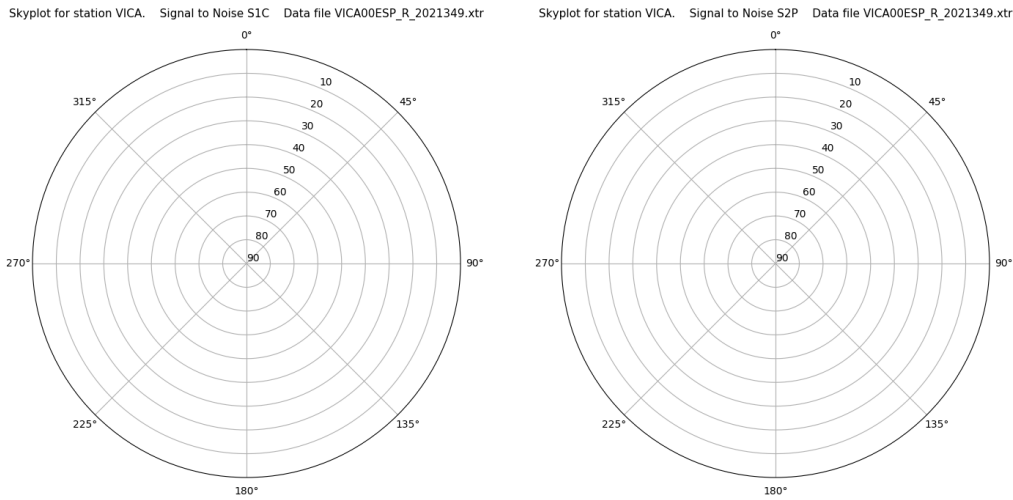
Time-elevation plot for station VICA. Signal to Noise S1C Data file VICA00ESP_R_2021349.xtr



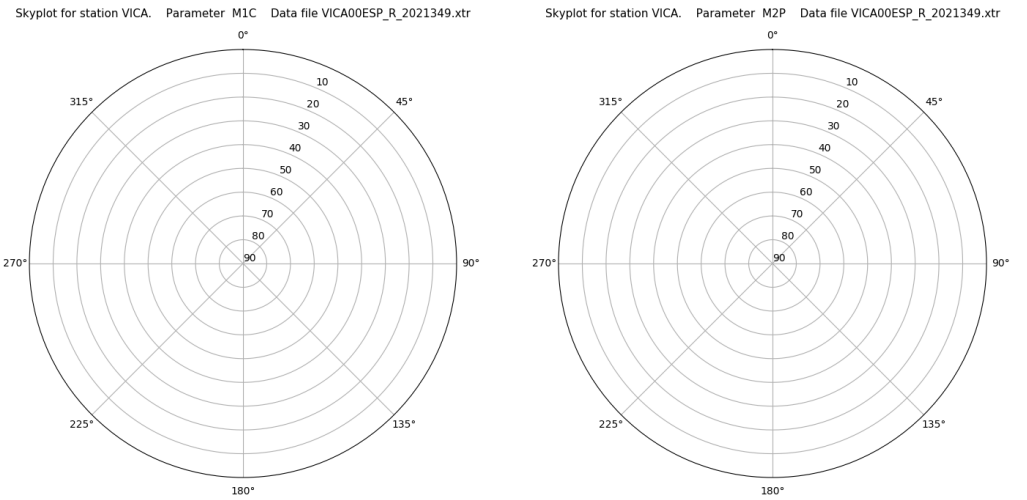
Control de calidad GNSS GLO diario

Estacion: VICA
 Fecha: 2021 12 15
 Dia del año: 349

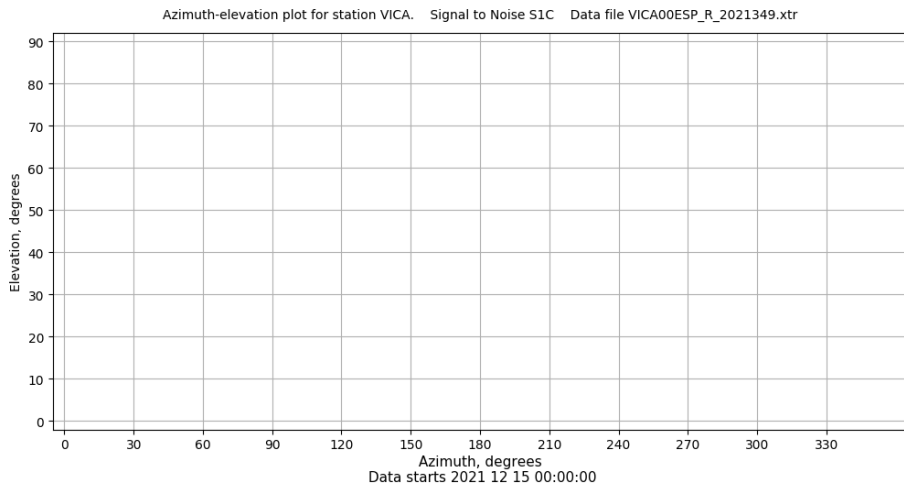
Señal-Ruido GLO L1 y L2



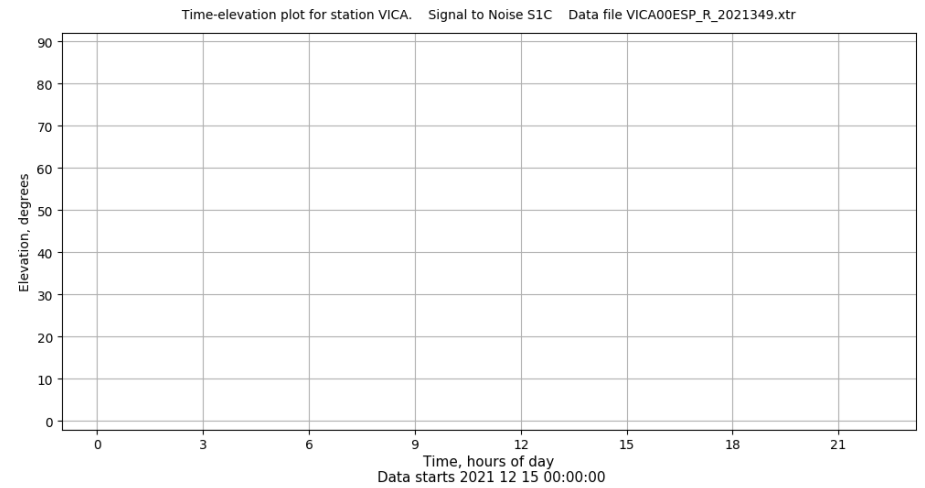
Multipath GLO L1 y L2



Azimut-Elevacion



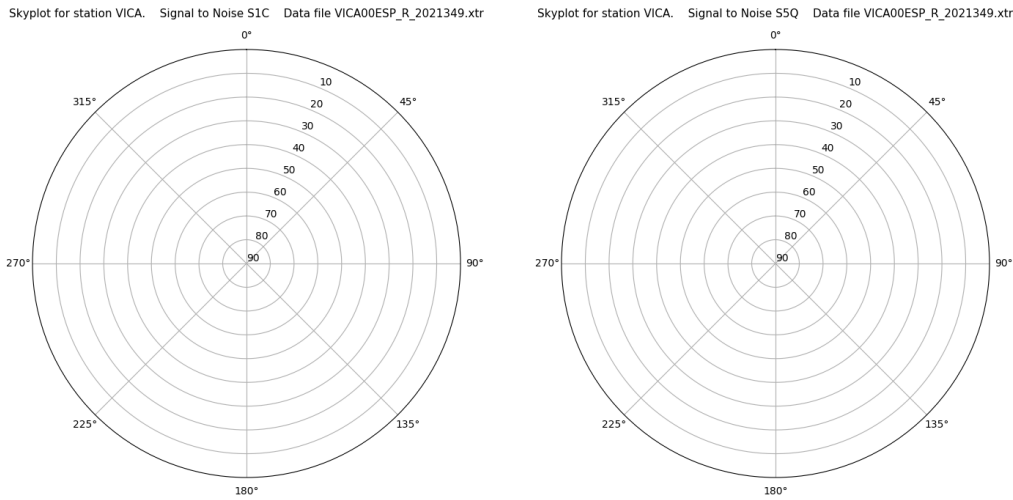
Tiempo-Elevacion



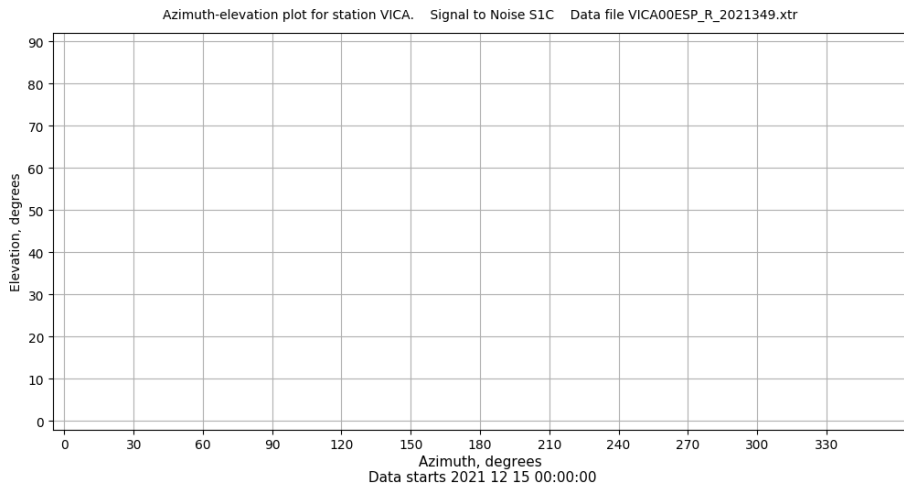
Control de calidad GNSS GAL diario

Estacion: VICA
 Fecha: 2021 12 15
 Dia del año: 349

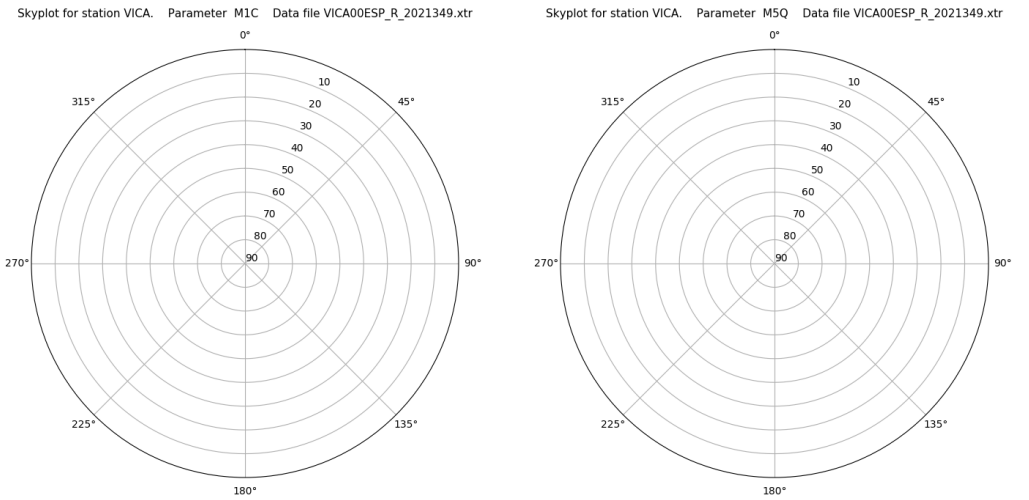
Señal-Ruido GAL E1 y E5



Azimut-Elevacion



Multipath GAL E1 y E5



Tiempo-Elevacion

