

# Control de calidad GNSS GPS diario

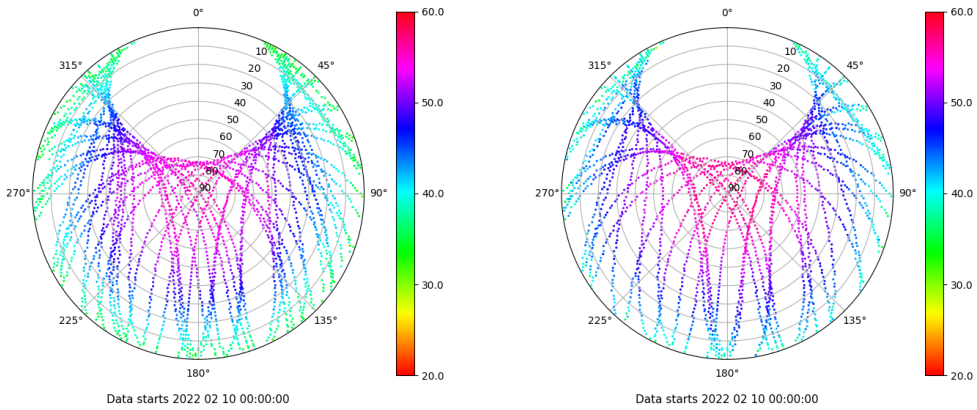
Estacion: VDGO

Fecha: 2022 02 10

Dia del año: 041

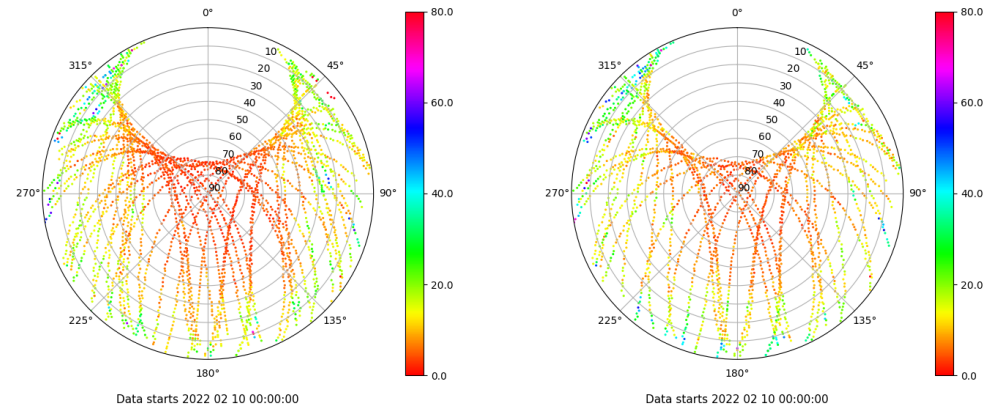
## Señal-Ruido GPS L1 y L2

Skyplot for station VDGO. Signal to Noise S1C Data file VDGO00ESP\_R\_2022041.xtr Skyplot for station VDGO. Signal to Noise S2S Data file VDGO00ESP\_R\_2022041.xtr



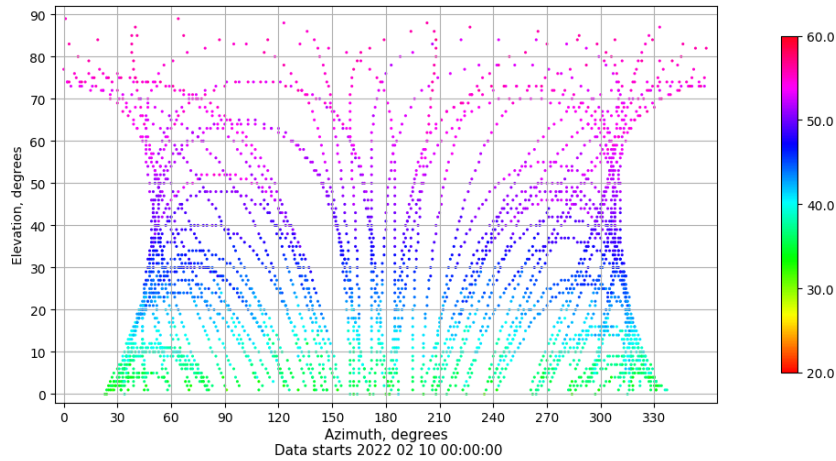
## Multipath GPS L1 y L2

Skyplot for station VDGO. Parameter M1C Data file VDGO00ESP\_R\_2022041.xtr Skyplot for station VDGO. Parameter M2S Data file VDGO00ESP\_R\_2022041.xtr



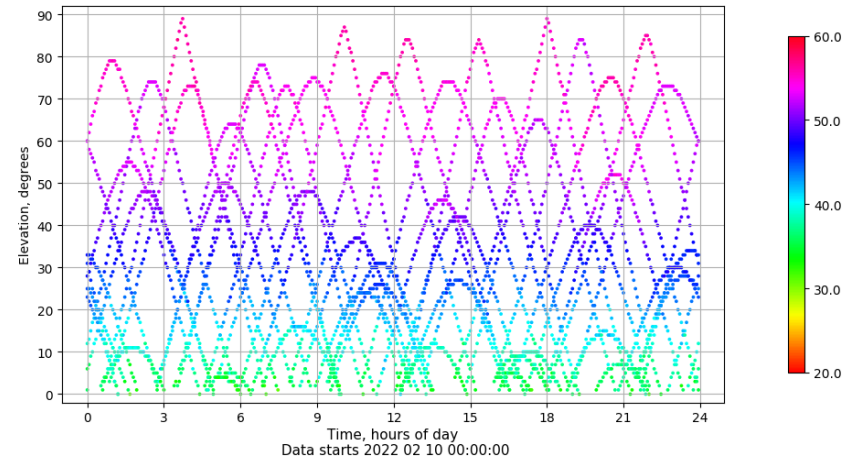
## Azimuth-Elevacion

Azimuth-elevation plot for station VDGO. Signal to Noise S1C Data file VDGO00ESP\_R\_2022041.xtr



## Tiempo-Elevacion

Time-elevation plot for station VDGO. Signal to Noise S1C Data file VDGO00ESP\_R\_2022041.xtr



# Control de calidad GNSS GLO diario

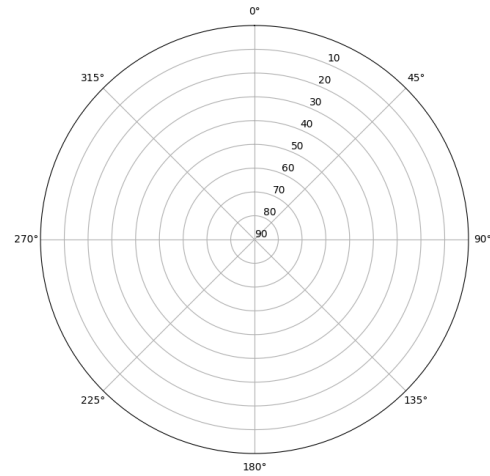
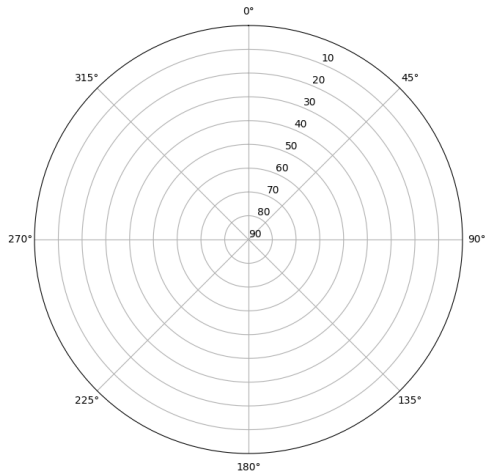
Estacion: VDGO

Fecha: 2022 02 10

Dia del año: 041

## Señal-Ruido GLO L1 y L2

Skyplot for station VDGO. Signal to Noise S1C Data file VDGO00ESP\_R\_2022041.xtr Skyplot for station VDGO. Signal to Noise S2C Data file VDGO00ESP\_R\_2022041.xtr

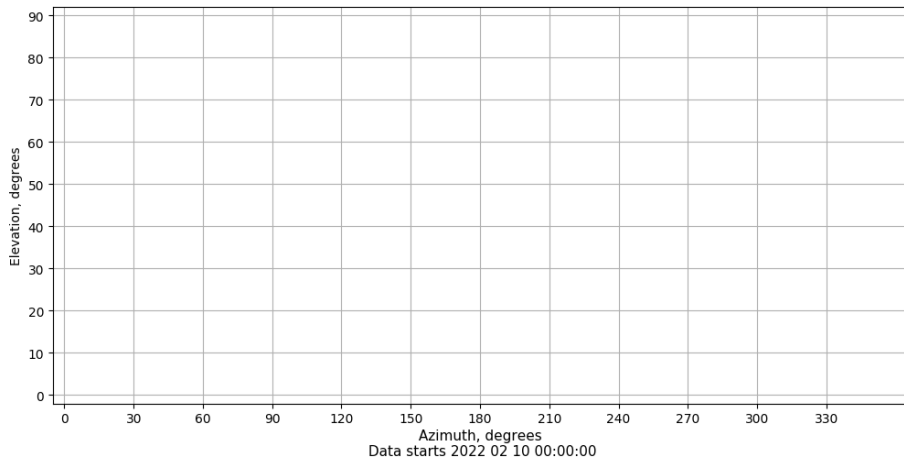


Data starts 2022 02 10 00:00:00

Data starts 2022 02 10 00:00:00

## Azimut-Elevacion

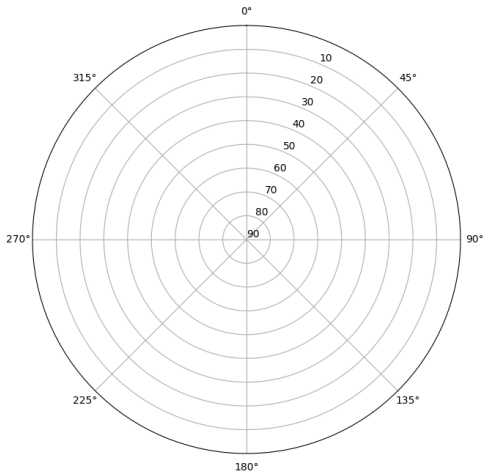
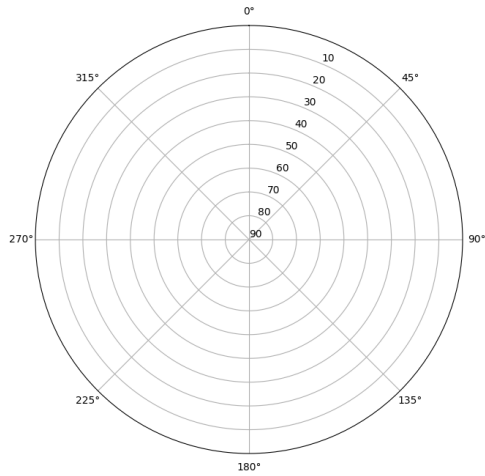
Azimuth-elevation plot for station VDGO. Signal to Noise S1C Data file VDGO00ESP\_R\_2022041.xtr



Data starts 2022 02 10 00:00:00

## Multipath GLO L1 y L2

Skyplot for station VDGO. Parameter M1C Data file VDGO00ESP\_R\_2022041.xtr Skyplot for station VDGO. Parameter M2C Data file VDGO00ESP\_R\_2022041.xtr

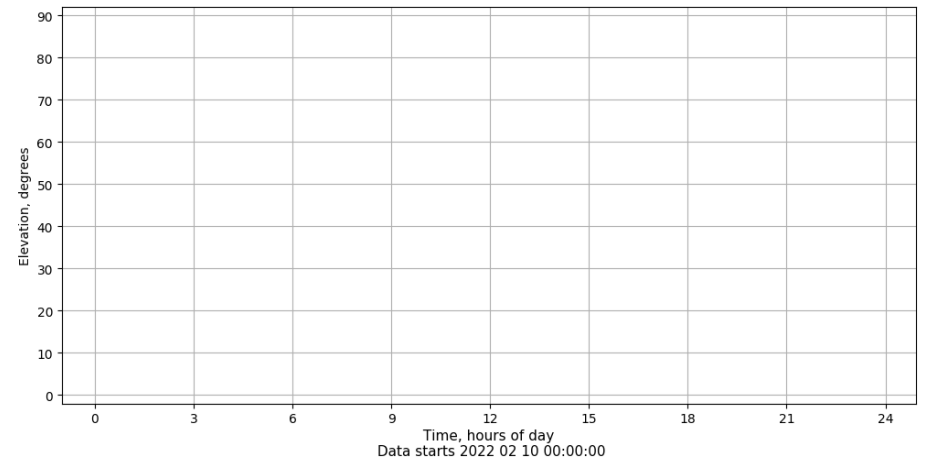


Data starts 2022 02 10 00:00:00

Data starts 2022 02 10 00:00:00

## Tiempo-Elevacion

Time-elevation plot for station VDGO. Signal to Noise S1C Data file VDGO00ESP\_R\_2022041.xtr



Data starts 2022 02 10 00:00:00

# Control de calidad GNSS GAL diario

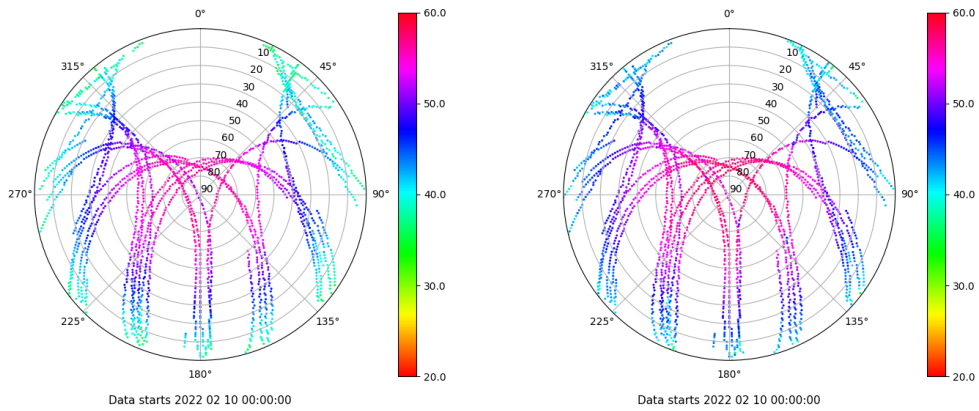
Estacion: VDGO

Fecha: 2022 02 10

Dia del año: 041

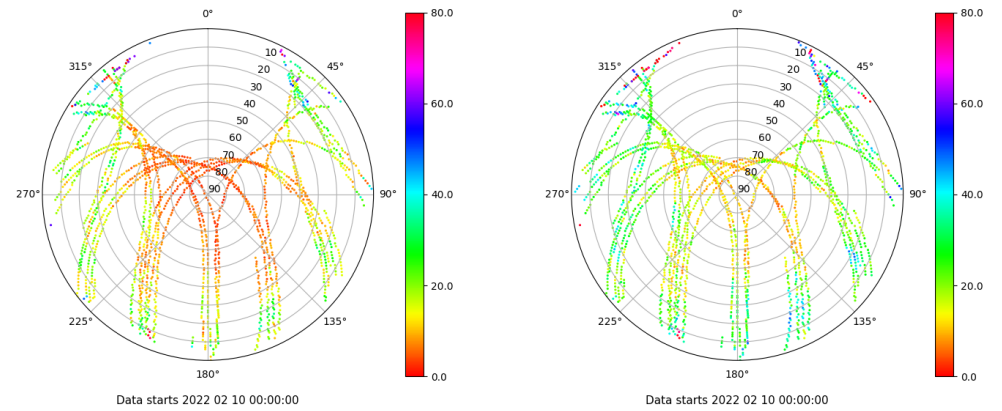
## Señal-Ruido GAL E1 y E5

Skyplot for station VDGO. Signal to Noise S1C Data file VDG000ESP\_R\_2022041.xtr Skyplot for station VDGO. Signal to Noise S5Q Data file VDG000ESP\_R\_2022041.xtr



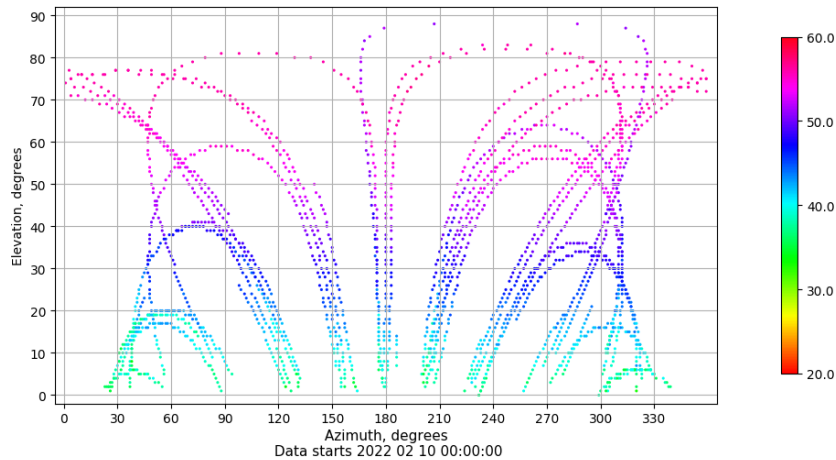
## Multipath GAL E1 y E5

Skyplot for station VDGO. Parameter M1C Data file VDG000ESP\_R\_2022041.xtr Skyplot for station VDGO. Parameter M5Q Data file VDG000ESP\_R\_2022041.xtr



## Azimut-Elevacion

Azimuth-elevation plot for station VDGO. Signal to Noise S1C Data file VDG000ESP\_R\_2022041.xtr



## Tiempo-Elevacion

Time-elevation plot for station VDGO. Signal to Noise S1C Data file VDG000ESP\_R\_2022041.xtr

