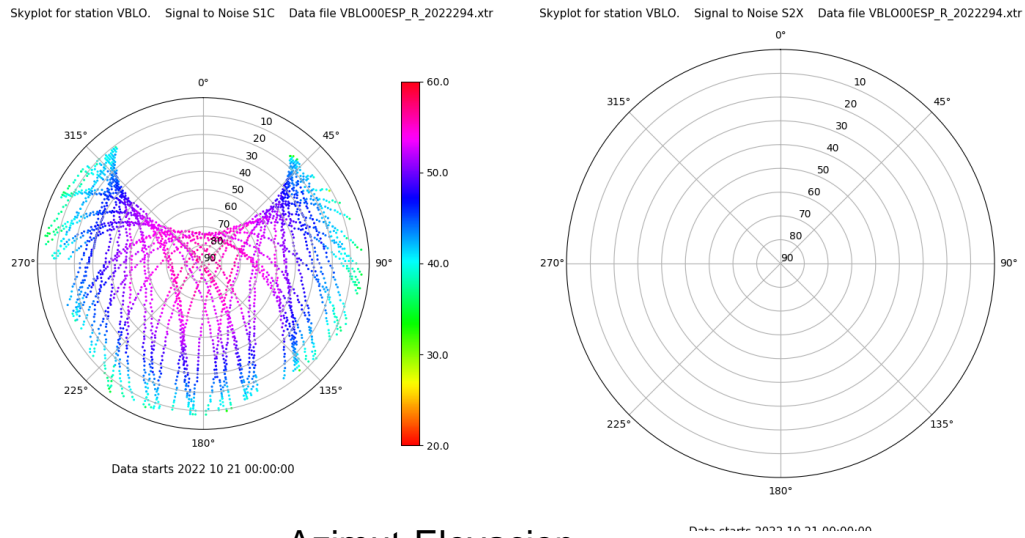


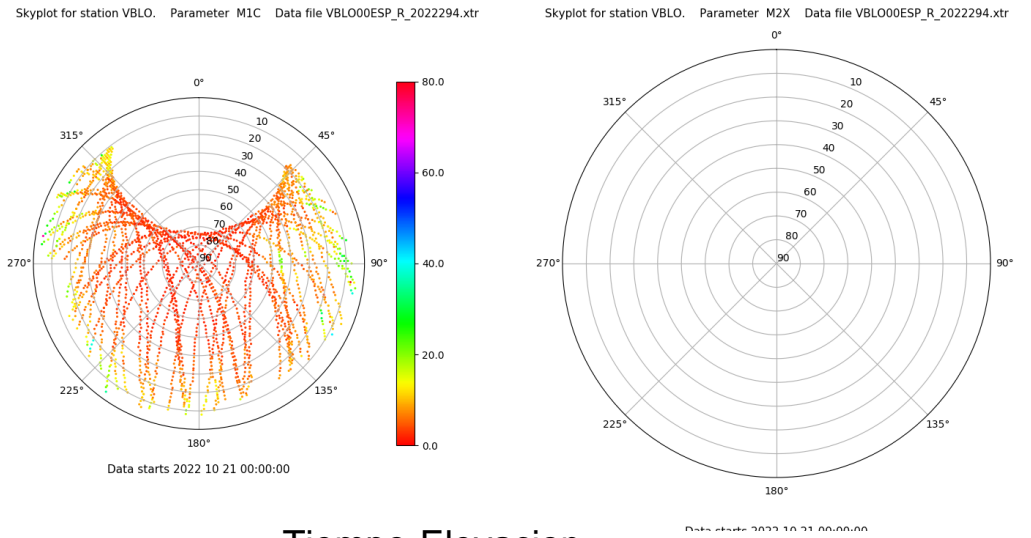
Control de calidad GNSS GPS diario

Estacion: VBLO
 Fecha: 2022 10 21
 Dia del año: 294

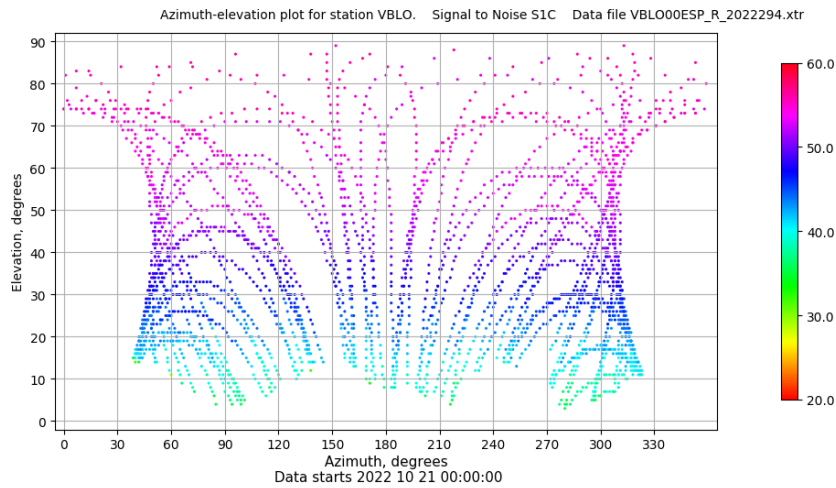
Señal-Ruido GPS L1 y L2



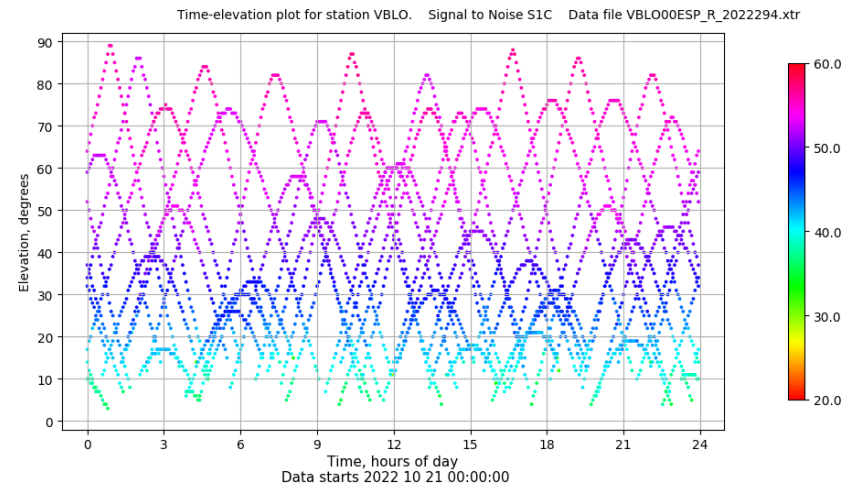
Multipath GPS L1 y L2



Azimuth-Elevacion



Tiempo-Elevacion

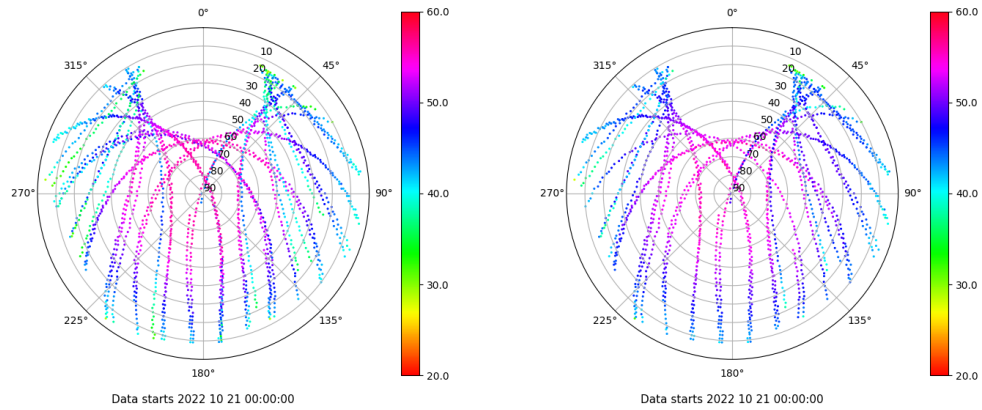


Control de calidad GNSS GLO diario

Estacion: VBLO
 Fecha: 2022 10 21
 Día del año: 294

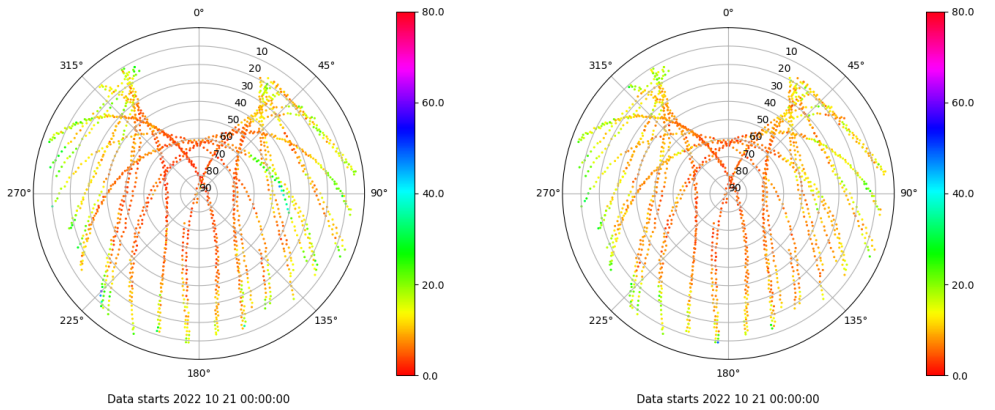
Señal-Ruido GLO L1 y L2

Skyplot for station VBLO. Signal to Noise S1C Data file VBLO00ESP_R_2022294.xtr Skyplot for station VBLO. Signal to Noise S2C Data file VBLO00ESP_R_2022294.xtr



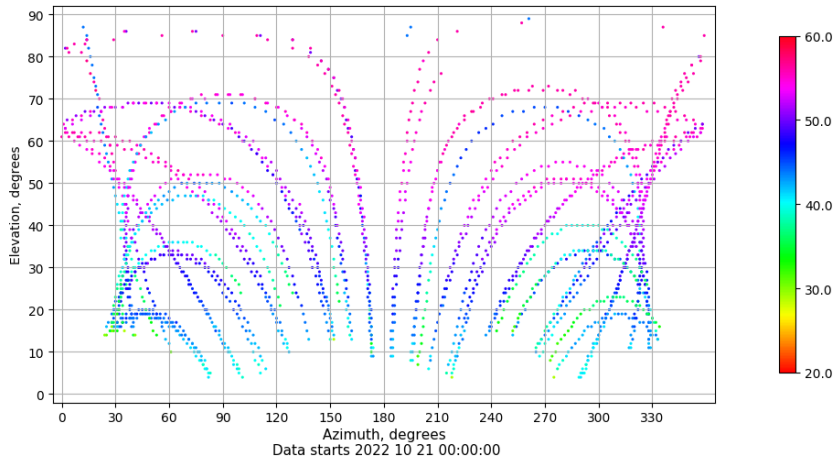
Multipath GLO L1 y L2

Skyplot for station VBLO. Parameter M1C Data file VBLO00ESP_R_2022294.xtr Skyplot for station VBLO. Parameter M2C Data file VBLO00ESP_R_2022294.xtr



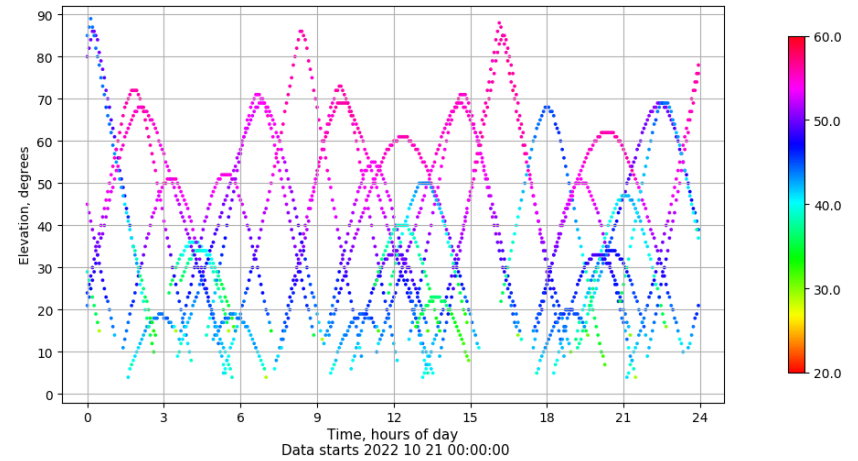
Azimuth-Elevacion

Azimuth-elevation plot for station VBLO. Signal to Noise S1C Data file VBLO00ESP_R_2022294.xtr



Tiempo-Elevacion

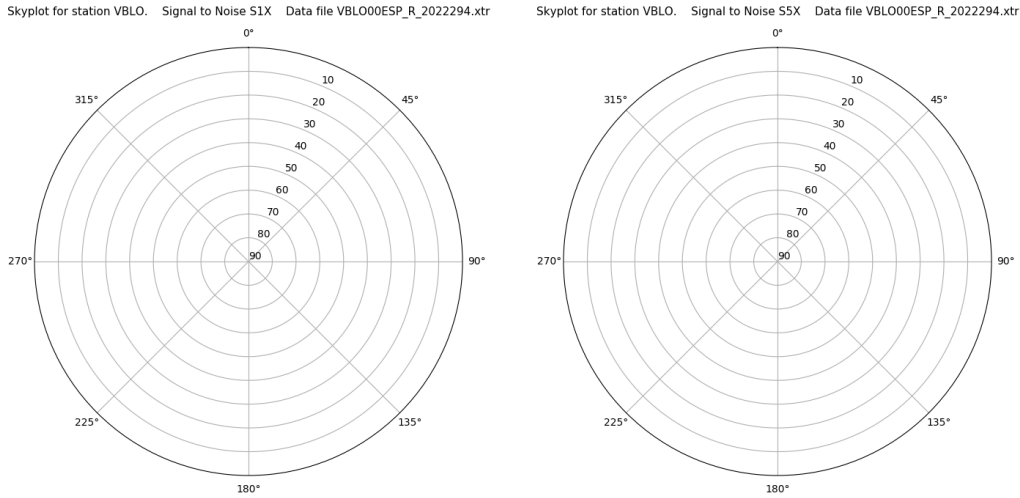
Time-elevation plot for station VBLO. Signal to Noise S1C Data file VBLO00ESP_R_2022294.xtr



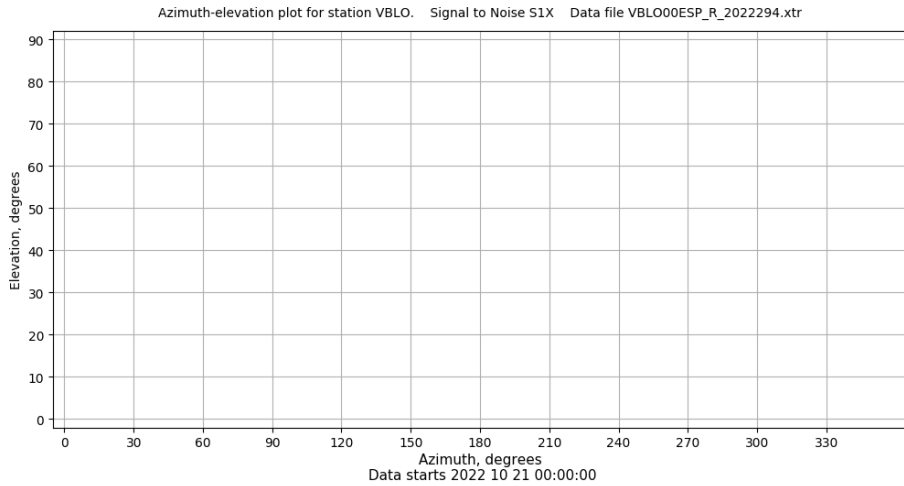
Control de calidad GNSS GAL diario

Estacion: VBLO
 Fecha: 2022 10 21
 Dia del año: 294

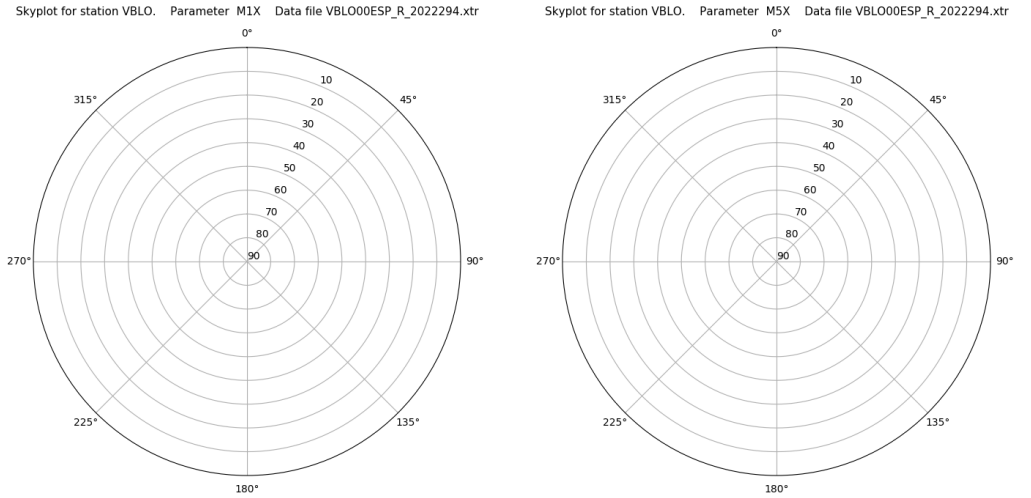
Señal-Ruido GAL E1 y E5



Azimut-Elevacion



Multipath GAL E1 y E5



Tiempo-Elevacion

