

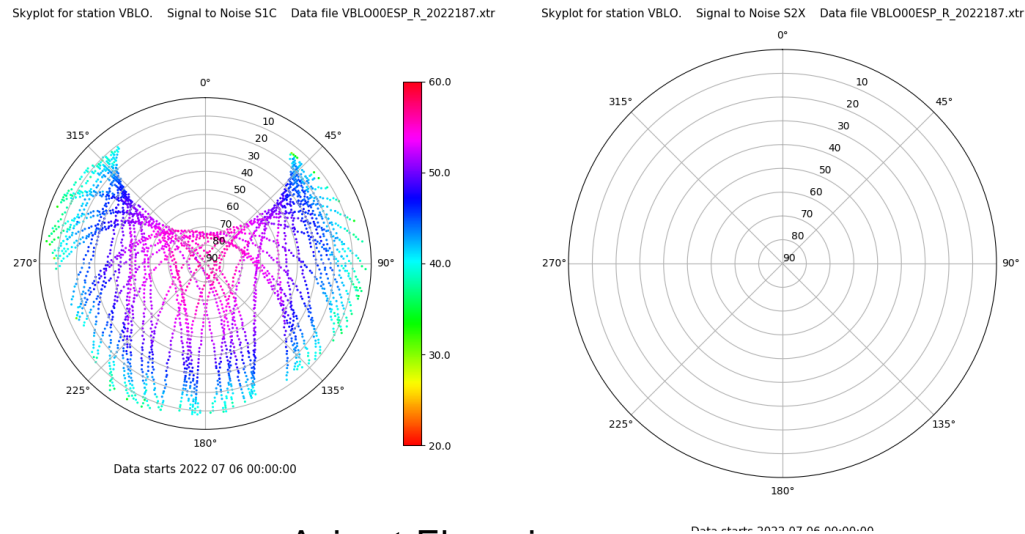
# Control de calidad GNSS GPS diario

Estacion: VBLO

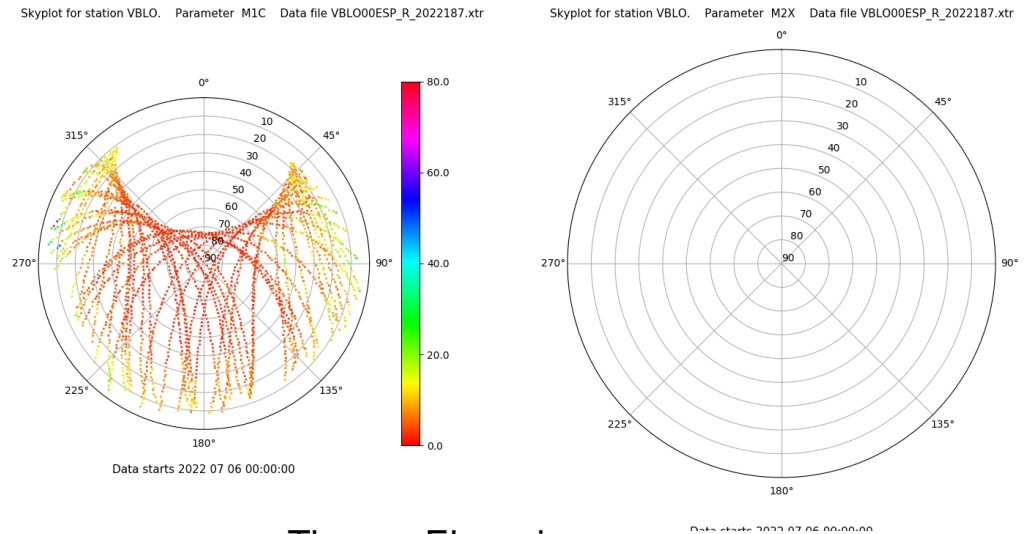
Fecha: 2022 07 06

Día del año: 187

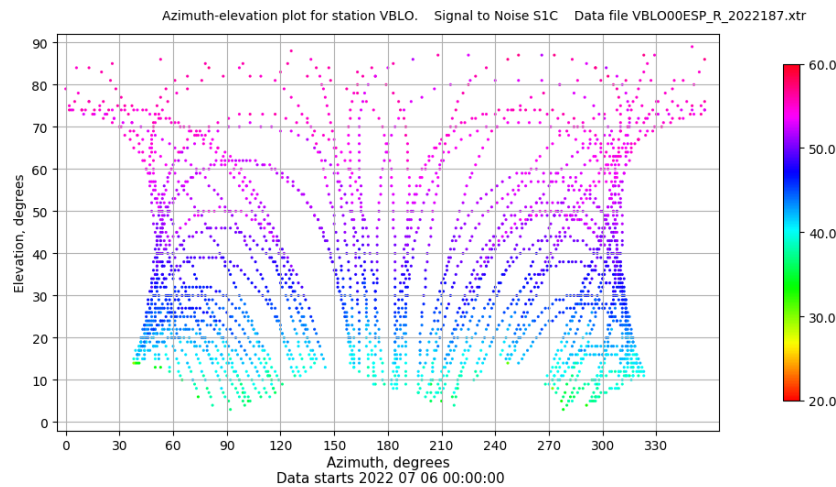
## Señal-Ruido GPS L1 y L2



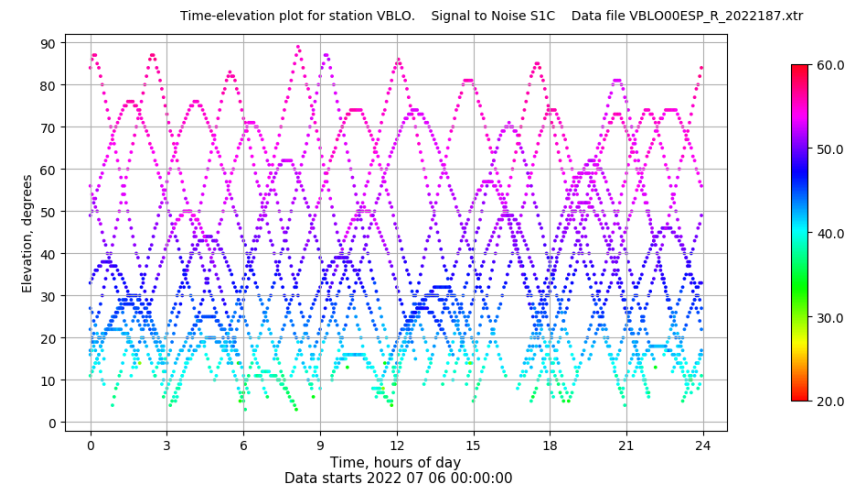
## Multipath GPS L1 y L2



## Azimut-Elevacion



## Tiempo-Elevacion



# Control de calidad GNSS GLO diario

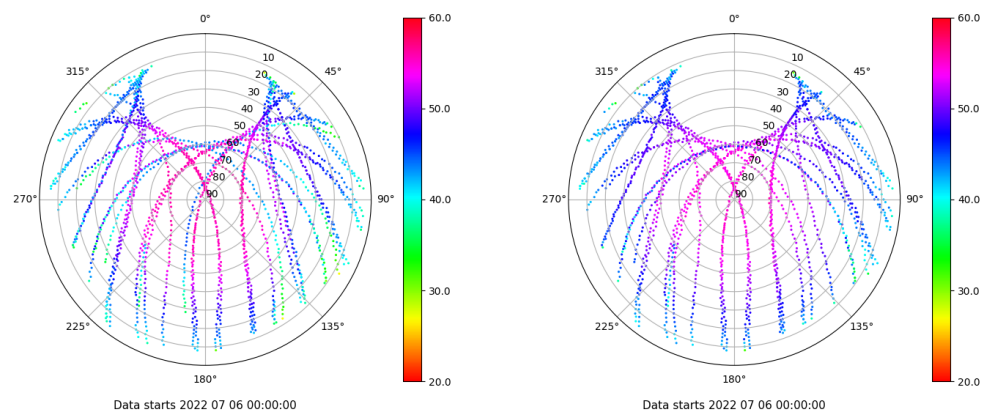
Estacion: VBLO

Fecha: 2022 07 06

Día del año: 187

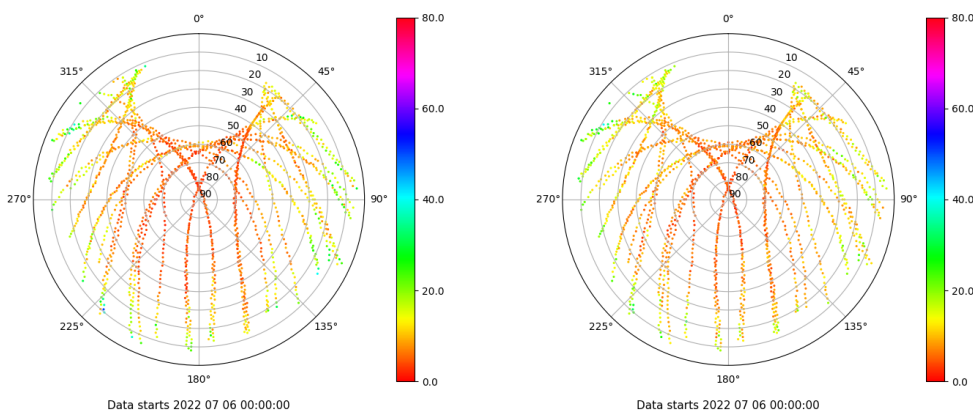
## Señal-Ruido GLO L1 y L2

Skyplot for station VBLO. Signal to Noise S1C Data file VBLO00ESP\_R\_2022187.xtr Skyplot for station VBLO. Signal to Noise S2C Data file VBLO00ESP\_R\_2022187.xtr



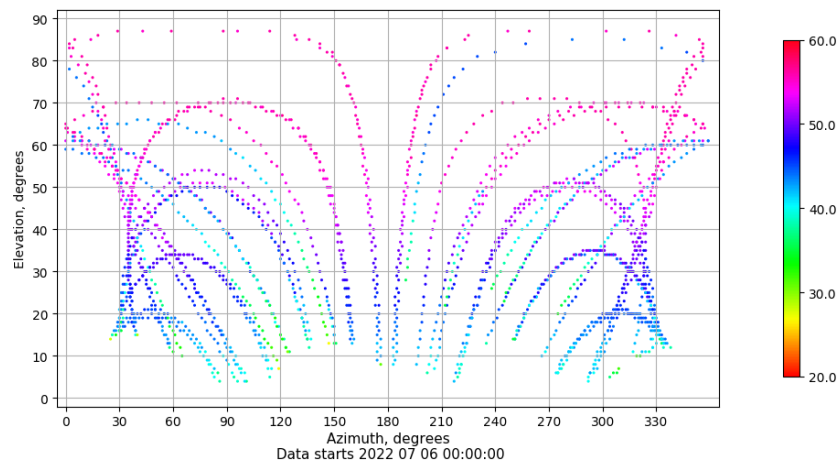
## Multipath GLO L1 y L2

Skyplot for station VBLO. Parameter M1C Data file VBLO00ESP\_R\_2022187.xtr Skyplot for station VBLO. Parameter M2C Data file VBLO00ESP\_R\_2022187.xtr



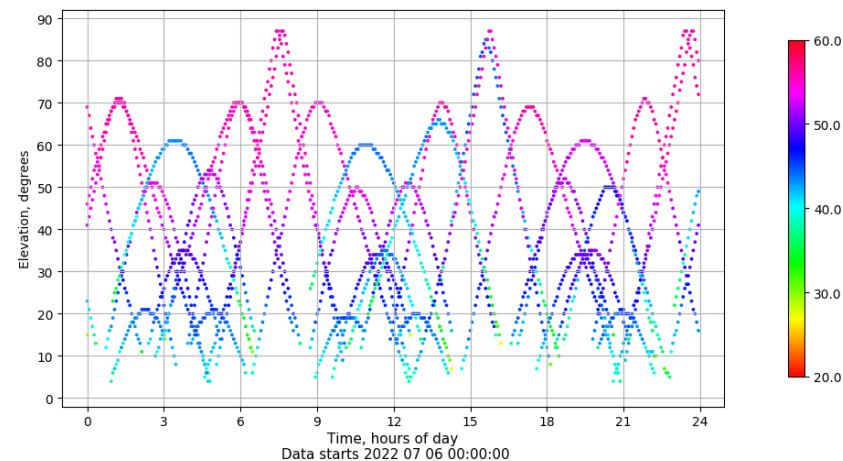
## Azimut-Elevacion

Azimuth-elevation plot for station VBLO. Signal to Noise S1C Data file VBLO00ESP\_R\_2022187.xtr



## Tiempo-Elevacion

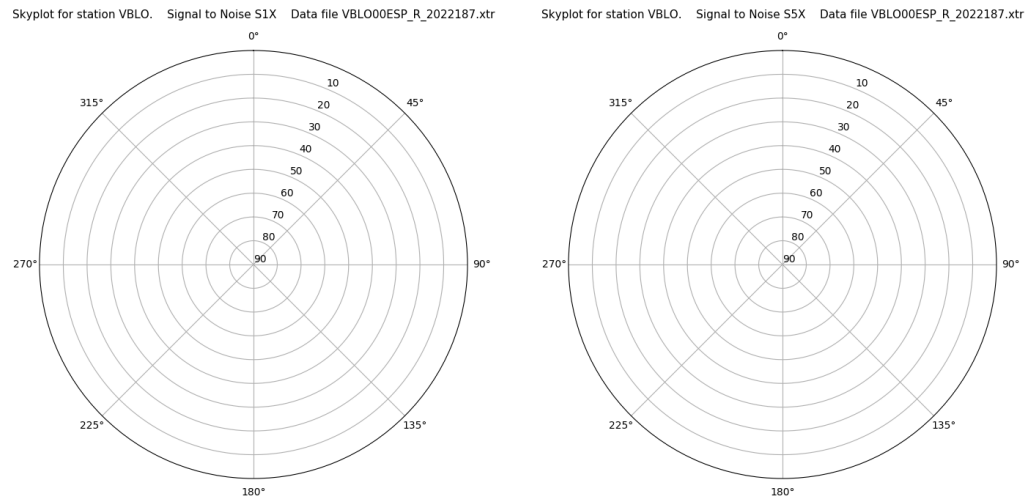
Time-elevation plot for station VBLO. Signal to Noise S1C Data file VBLO00ESP\_R\_2022187.xtr



# Control de calidad GNSS GAL diario

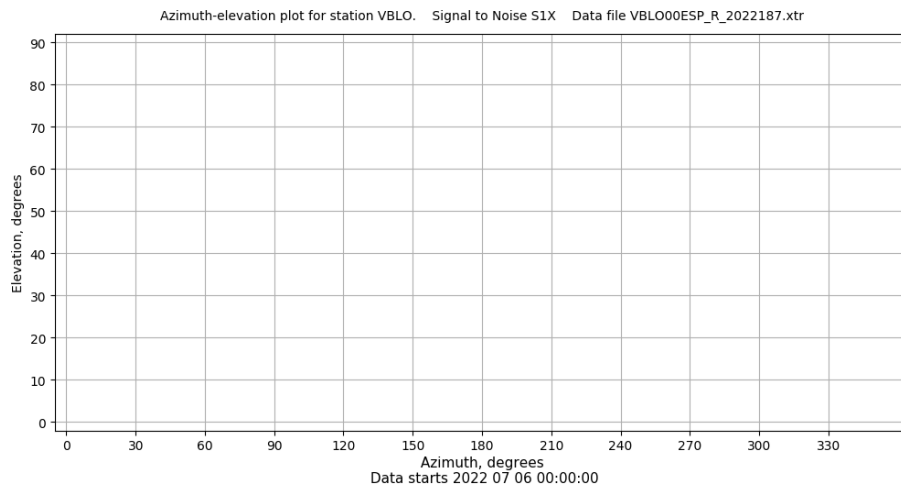
Estacion: VBLO  
Fecha: 2022 07 06  
Dia del año: 187

## Señal-Ruido GAL E1 y E5



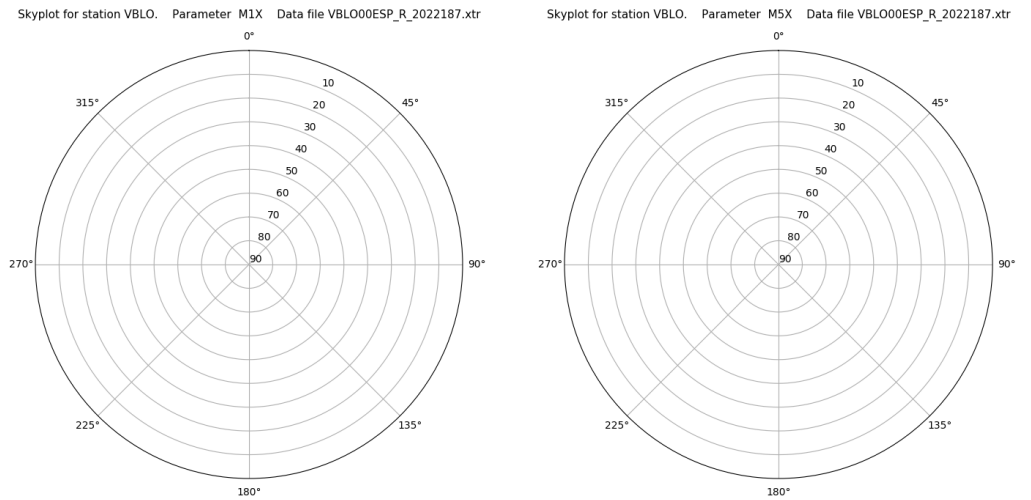
Data starts 2022 07 06 00:00:00

## Azimut-Elevacion



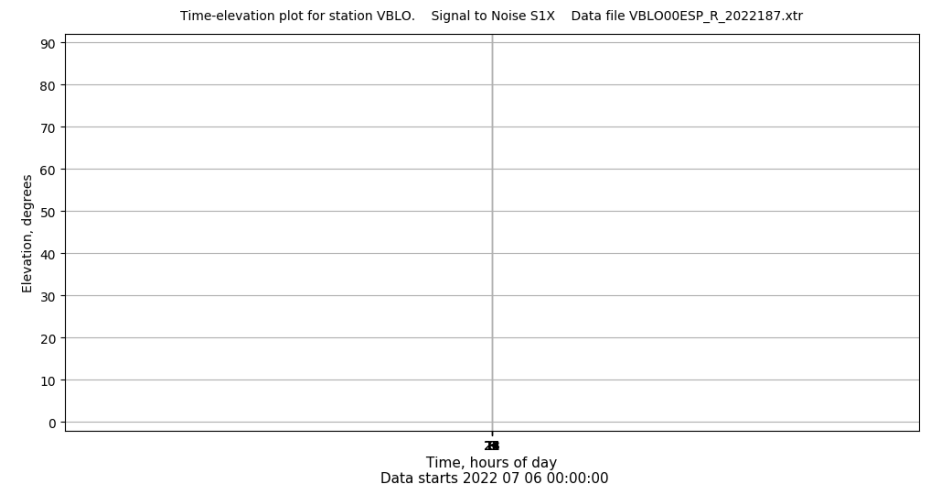
Data starts 2022 07 06 00:00:00

## Multipath GAL E1 y E5



Data starts 2022 07 06 00:00:00

## Tiempo-Elevacion



Data starts 2022 07 06 00:00:00