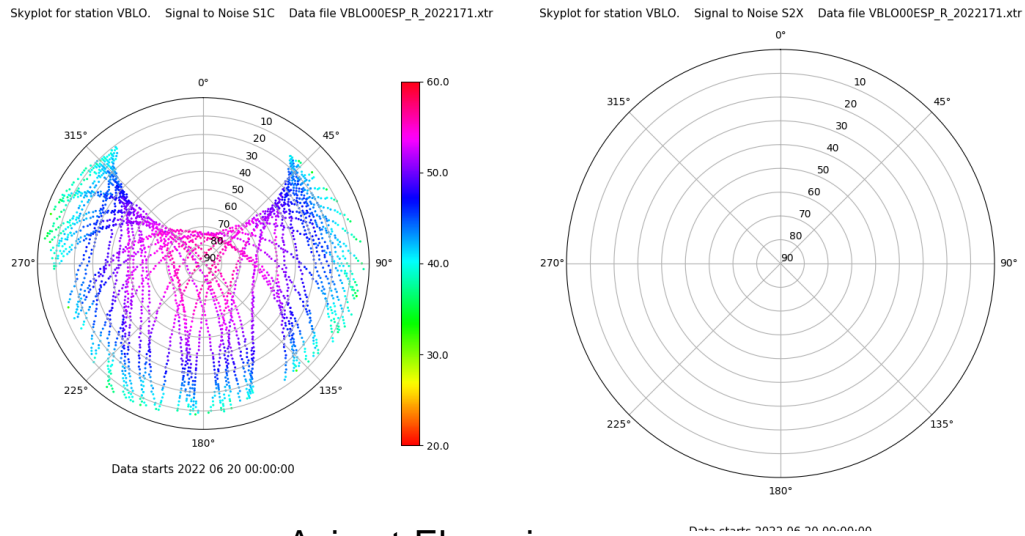


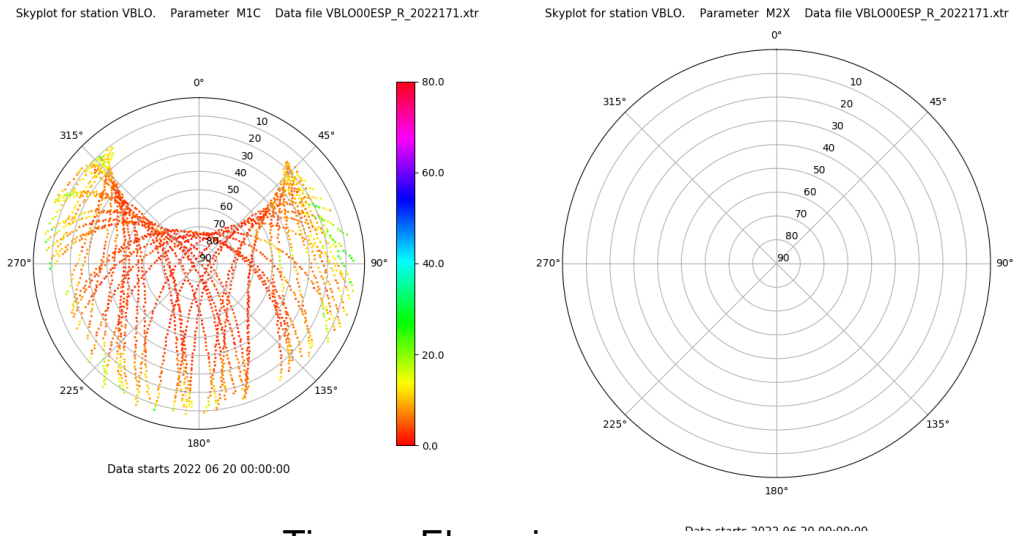
# Control de calidad GNSS GPS diario

Estacion: VBLO  
 Fecha: 2022 06 20  
 Dia del año: 171

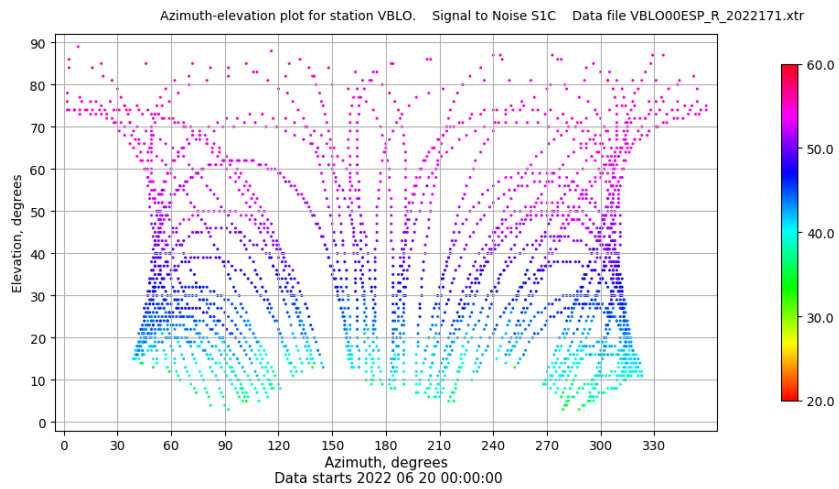
## Señal-Ruido GPS L1 y L2



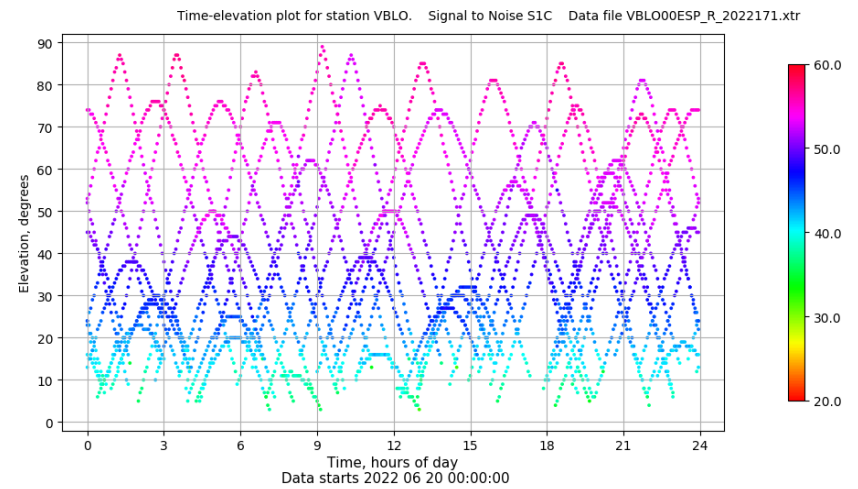
## Multipath GPS L1 y L2



## Azimuth-Elevacion



## Tiempo-Elevacion

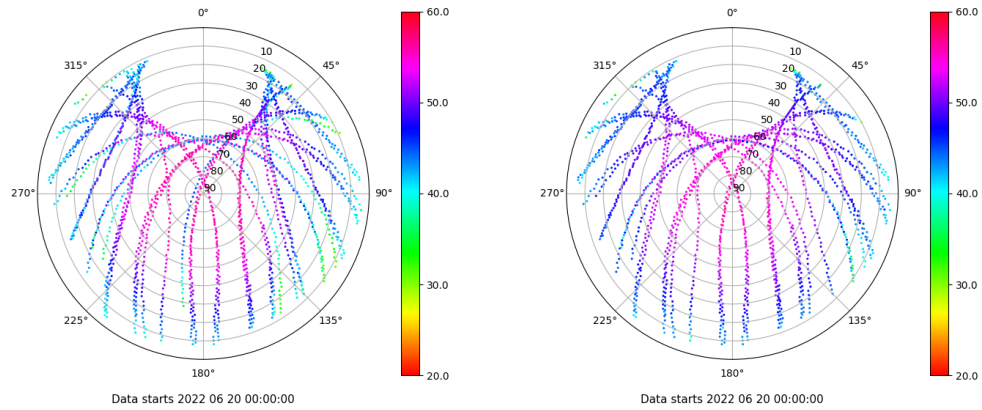


# Control de calidad GNSS GLO diario

Estacion: VBLO  
 Fecha: 2022 06 20  
 Dia del año: 171

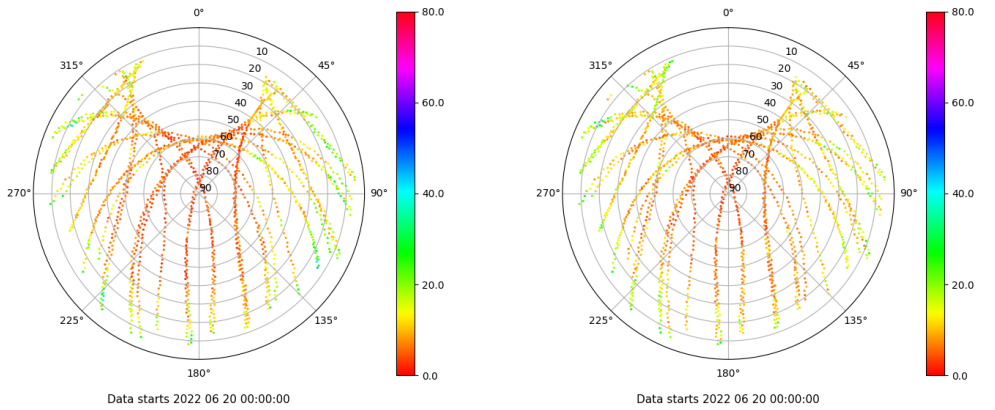
## Señal-Ruido GLO L1 y L2

Skyplot for station VBLO. Signal to Noise S1C Data file VBLO00ESP\_R\_2022171.xtr Skyplot for station VBLO. Signal to Noise S2C Data file VBLO00ESP\_R\_2022171.xtr



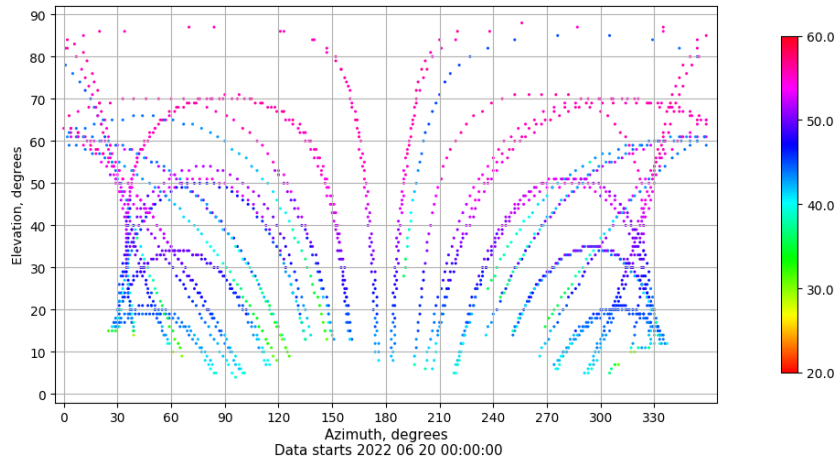
## Multipath GLO L1 y L2

Skyplot for station VBLO. Parameter M1C Data file VBLO00ESP\_R\_2022171.xtr Skyplot for station VBLO. Parameter M2C Data file VBLO00ESP\_R\_2022171.xtr



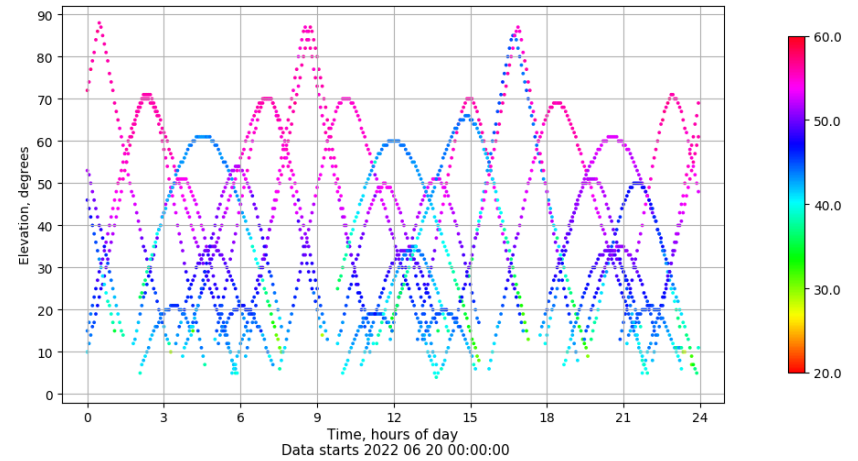
## Azimuth-Elevacion

Azimuth-elevation plot for station VBLO. Signal to Noise S1C Data file VBLO00ESP\_R\_2022171.xtr



## Tiempo-Elevacion

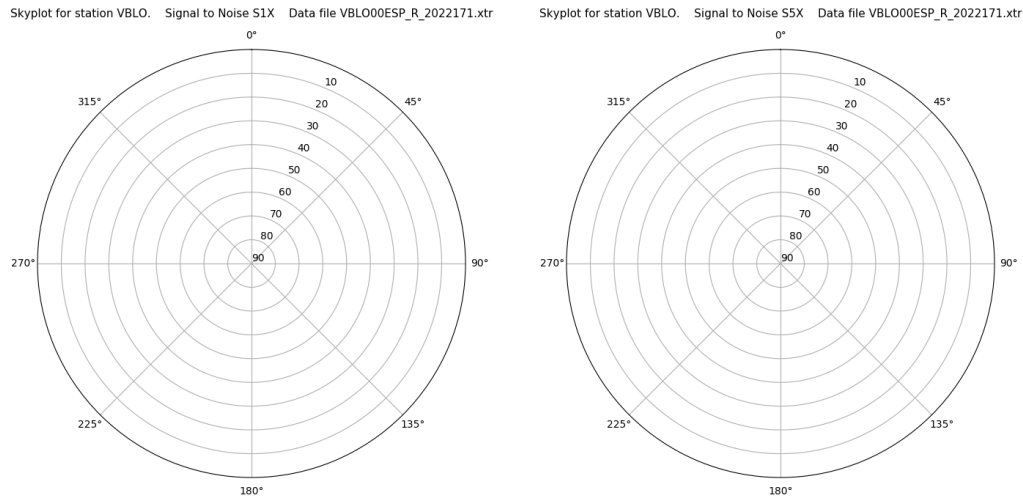
Time-elevation plot for station VBLO. Signal to Noise S1C Data file VBLO00ESP\_R\_2022171.xtr



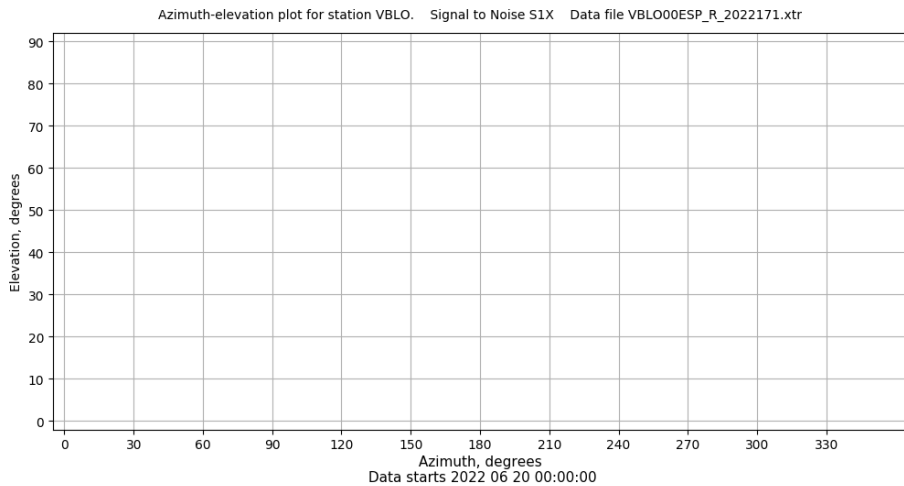
# Control de calidad GNSS GAL diario

Estacion: VBLO  
 Fecha: 2022 06 20  
 Dia del año: 171

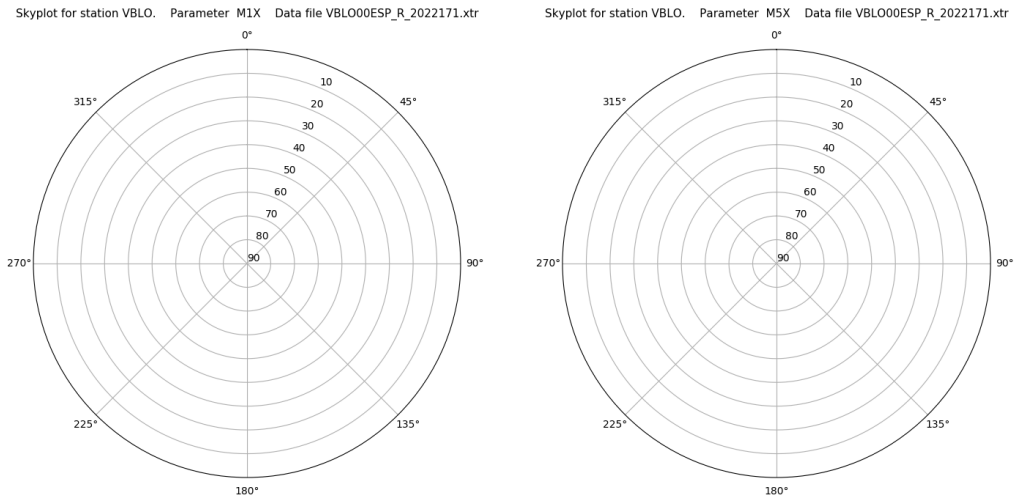
## Señal-Ruido GAL E1 y E5



## Azimut-Elevacion



## Multipath GAL E1 y E5



## Tiempo-Elevacion

