

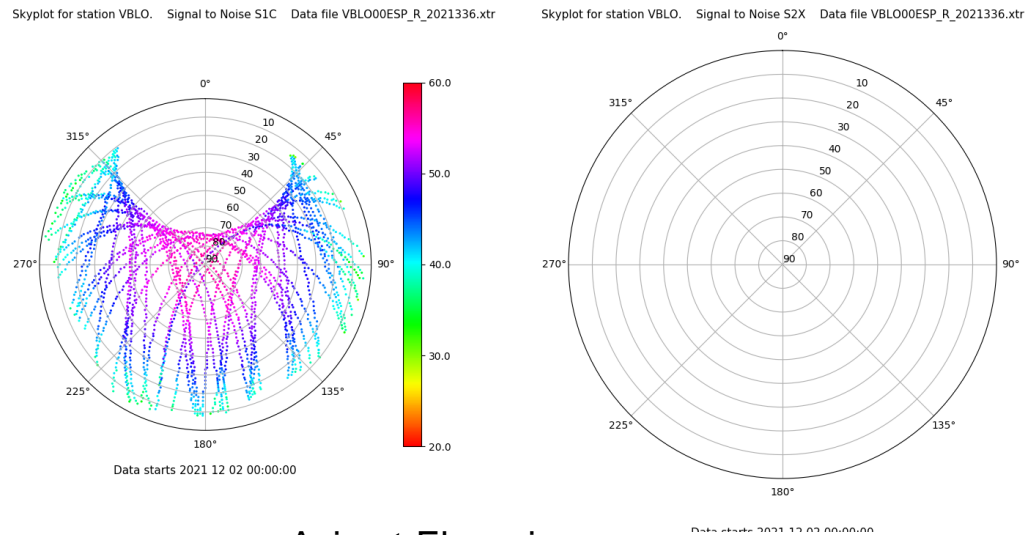
Control de calidad GNSS GPS diario

Estacion: VBLO

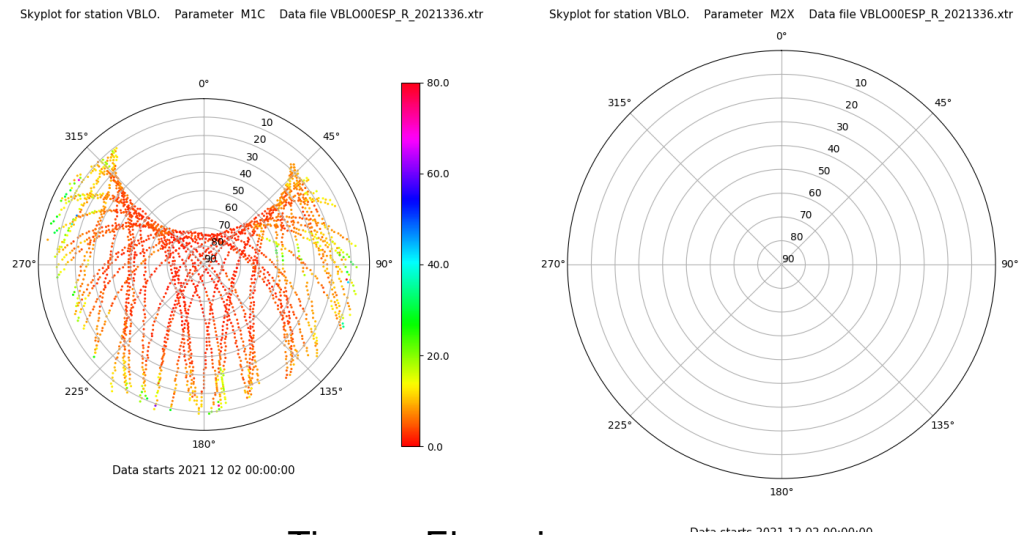
Fecha: 2021 12 02

Día del año: 336

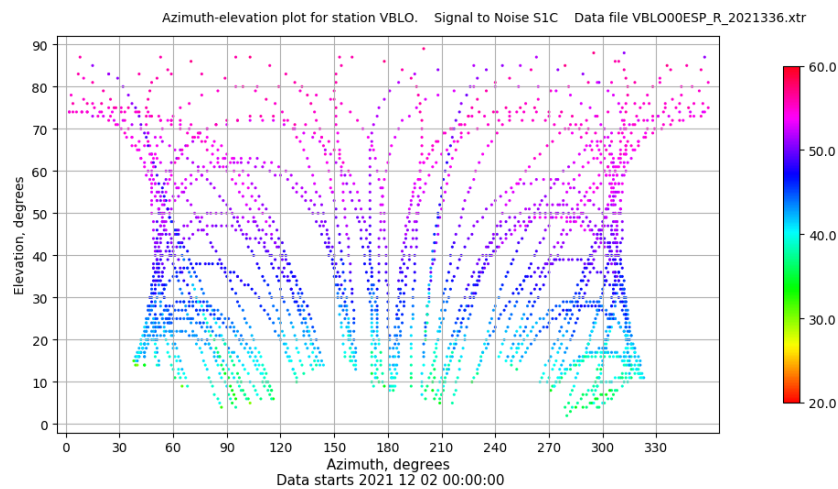
Señal-Ruido GPS L1 y L2



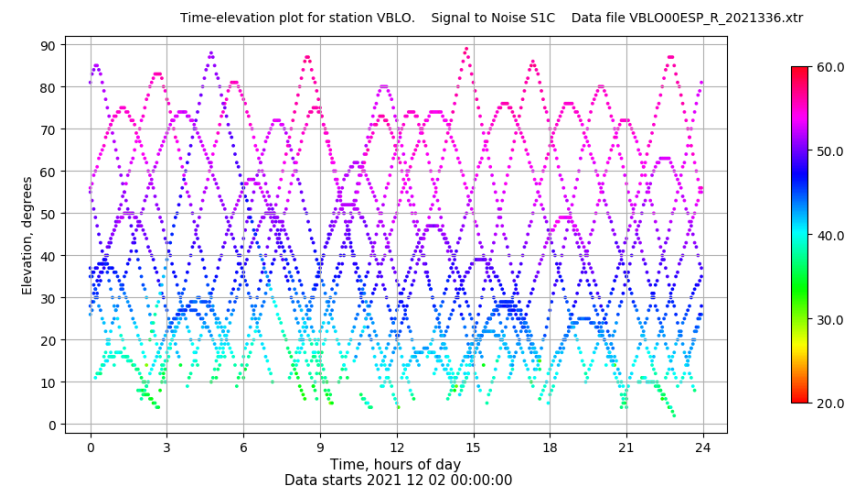
Multipath GPS L1 y L2



Azimut-Elevacion



Tiempo-Elevacion



Control de calidad GNSS GLO diario

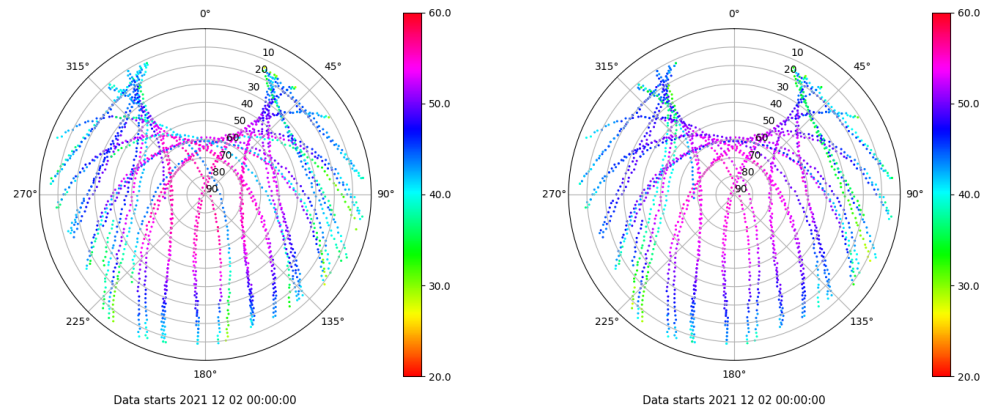
Estacion: VBLO

Fecha: 2021 12 02

Día del año: 336

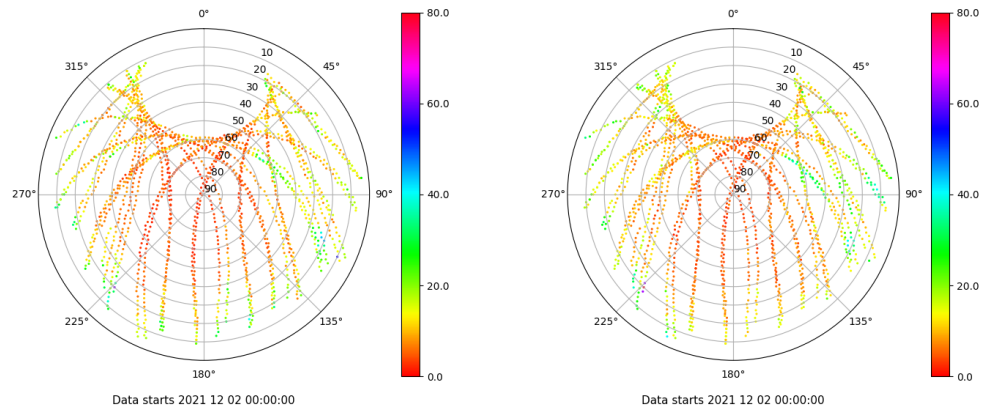
Señal-Ruido GLO L1 y L2

Skyplot for station VBLO. Signal to Noise S1C Data file VBLO00ESP_R_2021336.xtr Skyplot for station VBLO. Signal to Noise S2C Data file VBLO00ESP_R_2021336.xtr



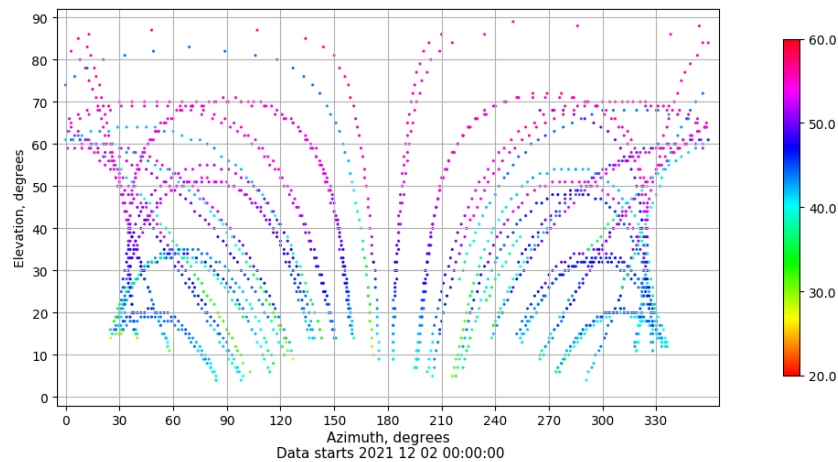
Multipath GLO L1 y L2

Skyplot for station VBLO. Parameter M1C Data file VBLO00ESP_R_2021336.xtr Skyplot for station VBLO. Parameter M2C Data file VBLO00ESP_R_2021336.xtr



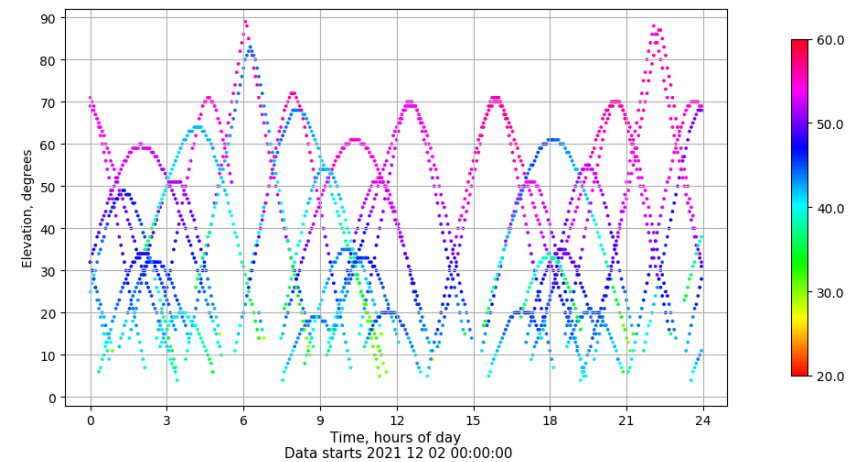
Azimut-Elevacion

Azimuth-elevation plot for station VBLO. Signal to Noise S1C Data file VBLO00ESP_R_2021336.xtr



Tiempo-Elevacion

Time-elevation plot for station VBLO. Signal to Noise S1C Data file VBLO00ESP_R_2021336.xtr



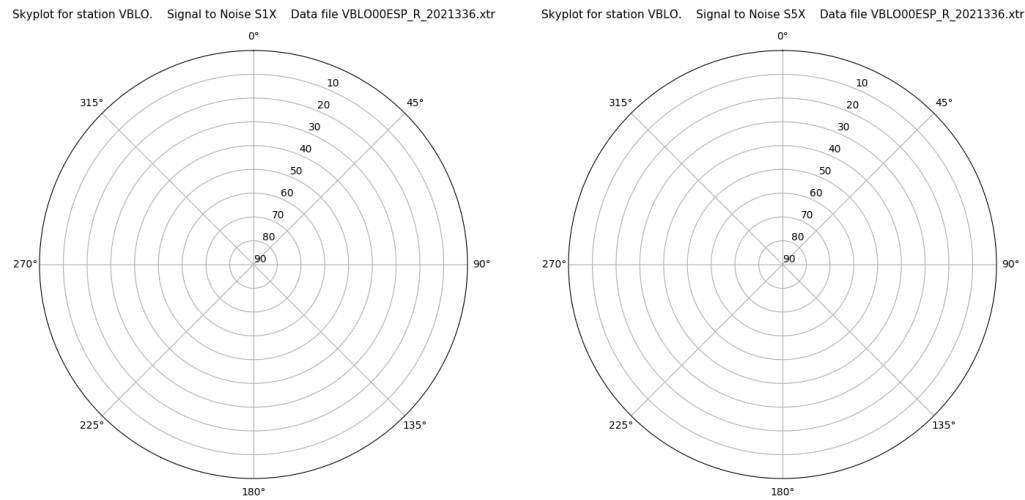
Control de calidad GNSS GAL diario

Estacion: VBLO

Fecha: 2021 12 02

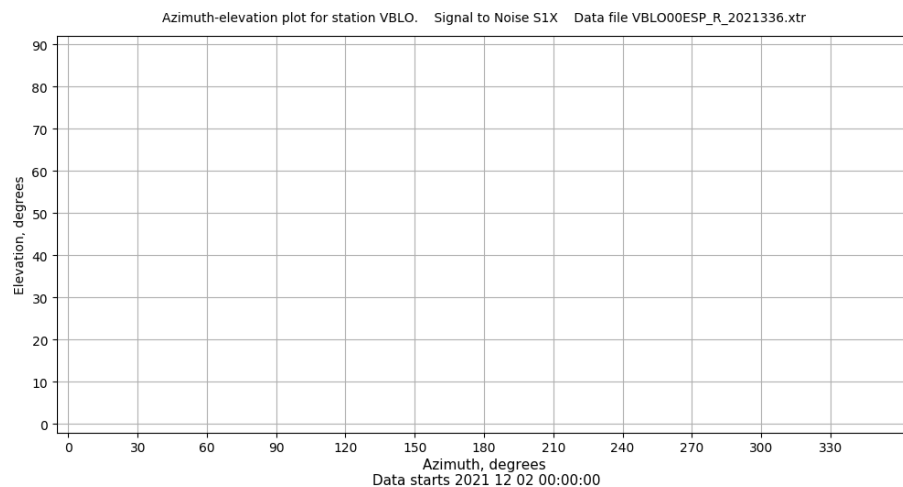
Día del año: 336

Señal-Ruido GAL E1 y E5



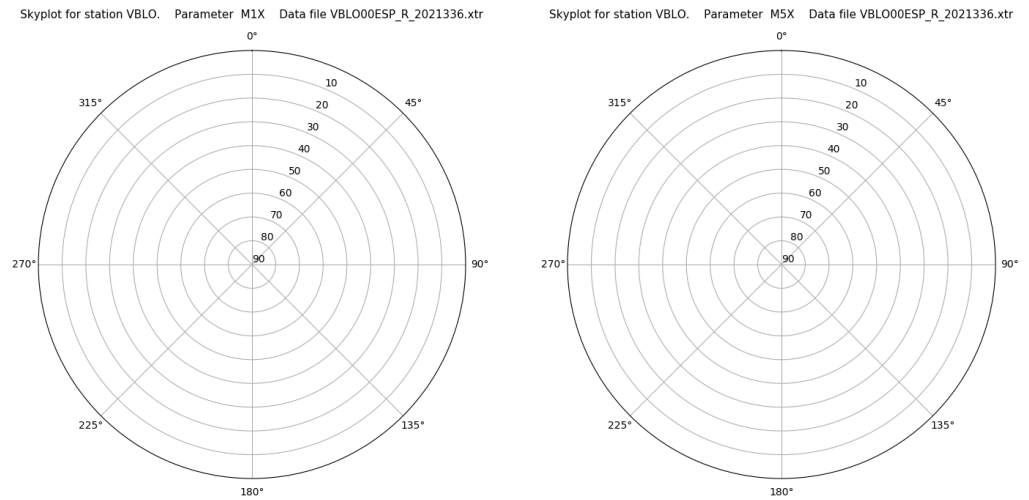
Data starts 2021 12 02 00:00:00

Azimut-Elevacion



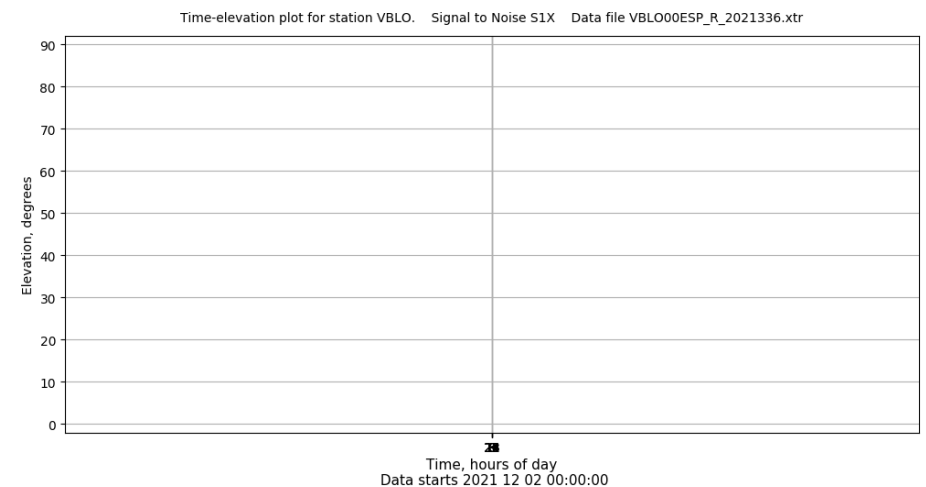
Data starts 2021 12 02 00:00:00

Multipath GAL E1 y E5



Data starts 2021 12 02 00:00:00

Tiempo-Elevacion



Data starts 2021 12 02 00:00:00