

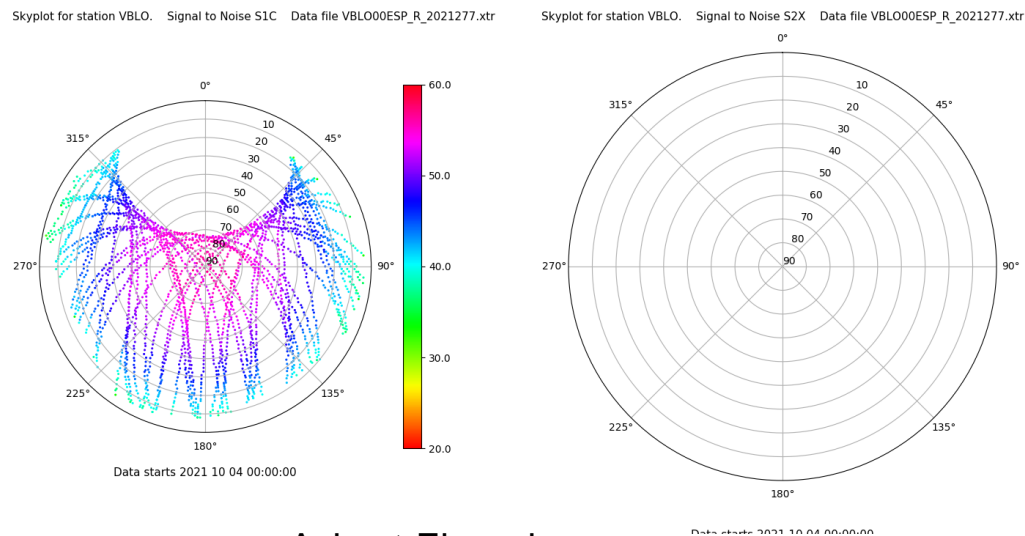
# Control de calidad GNSS GPS diario

Estacion: VBLO

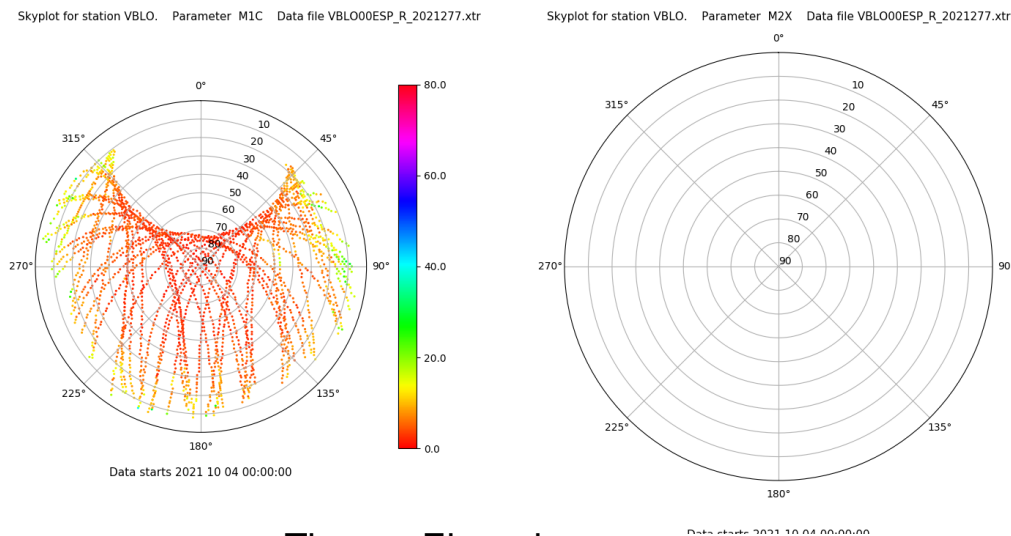
Fecha: 2021 10 04

Dia del año: 277

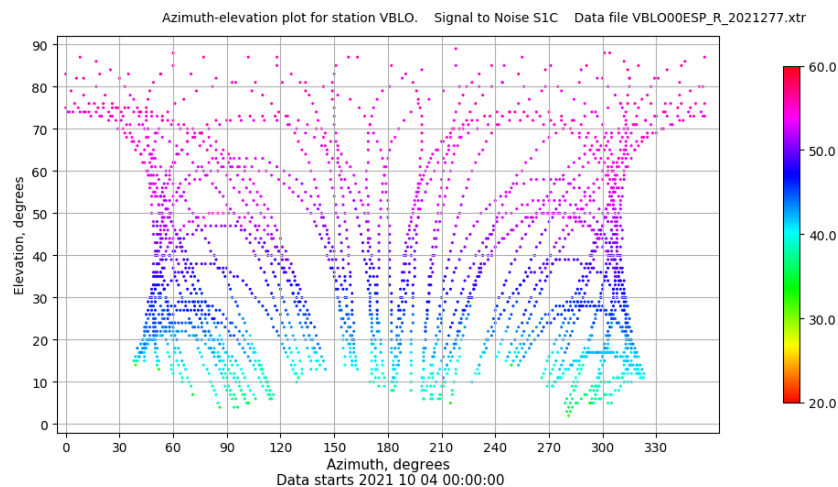
## Señal-Ruido GPS L1 y L2



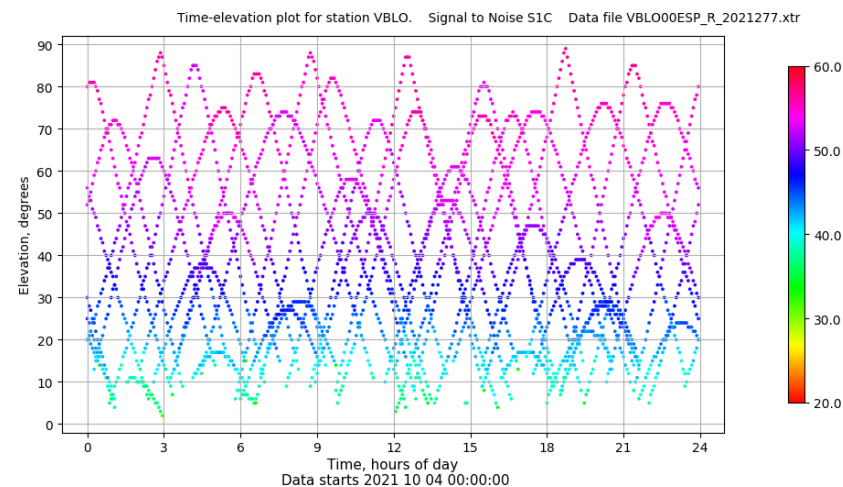
## Multipath GPS L1 y L2



## Azimut-Elevacion



## Tiempo-Elevacion



# Control de calidad GNSS GLO diario

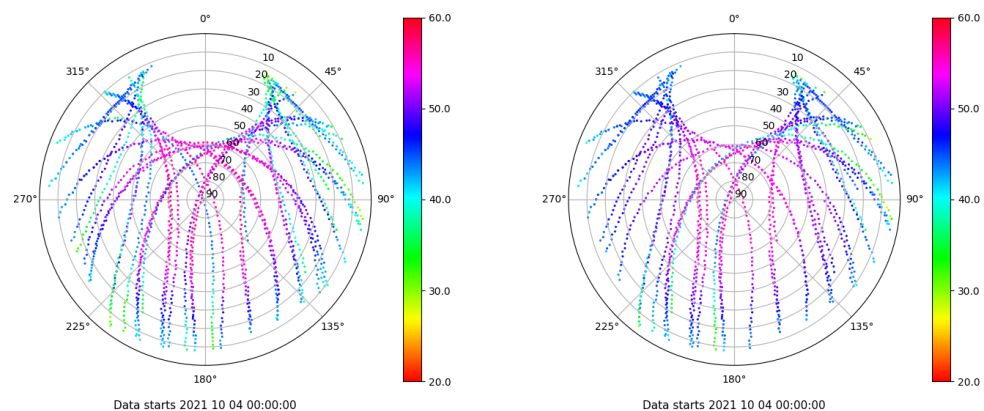
Estacion: VBLO

Fecha: 2021 10 04

Dia del año: 277

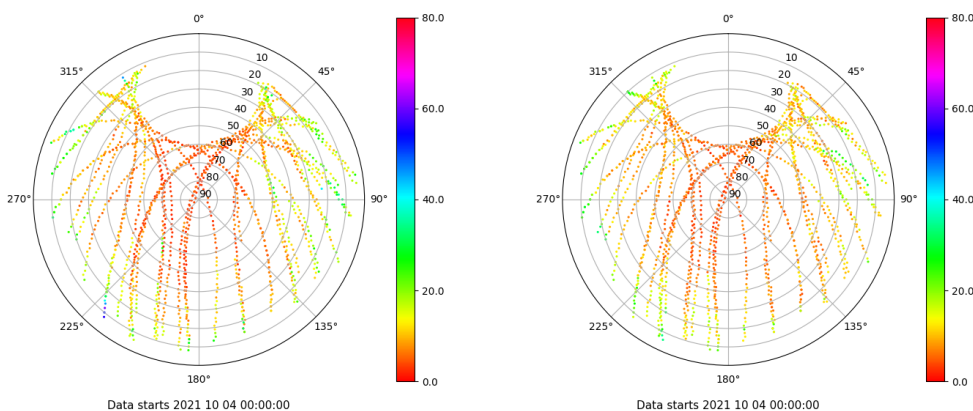
## Señal-Ruido GLO L1 y L2

Skyplot for station VBLO. Signal to Noise S1C Data file VBLO00ESP\_R\_2021277.xtr Skyplot for station VBLO. Signal to Noise S2C Data file VBLO00ESP\_R\_2021277.xtr



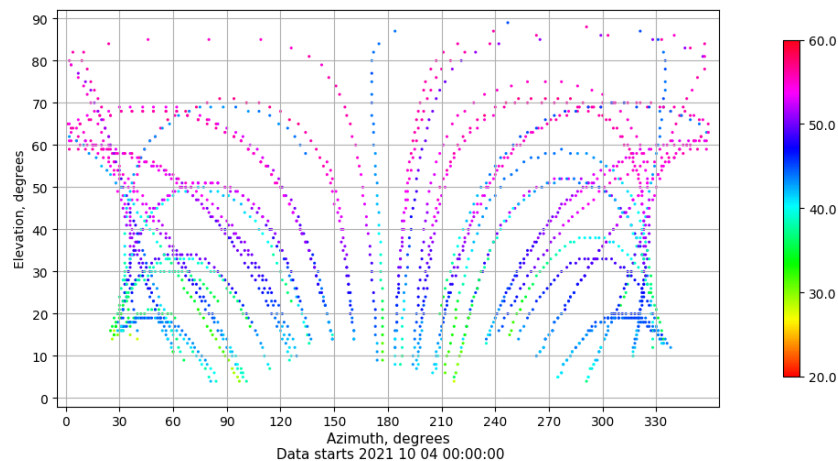
## Multipath GLO L1 y L2

Skyplot for station VBLO. Parameter M1C Data file VBLO00ESP\_R\_2021277.xtr Skyplot for station VBLO. Parameter M2C Data file VBLO00ESP\_R\_2021277.xtr



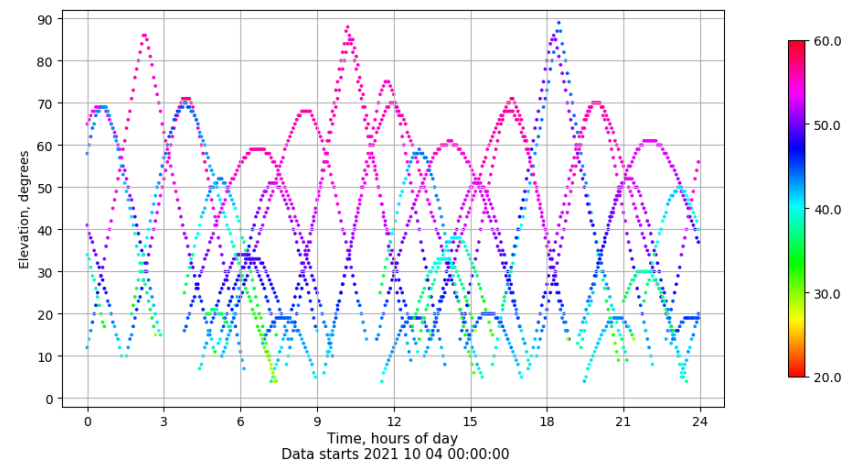
## Azimut-Elevacion

Azimuth-elevation plot for station VBLO. Signal to Noise S1C Data file VBLO00ESP\_R\_2021277.xtr



## Tiempo-Elevacion

Time-elevation plot for station VBLO. Signal to Noise S1C Data file VBLO00ESP\_R\_2021277.xtr



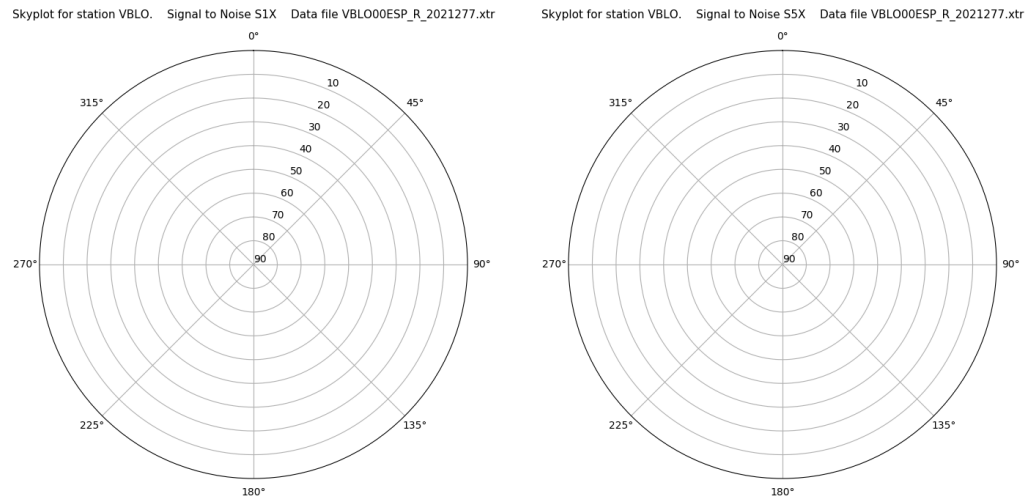
# Control de calidad GNSS GAL diario

Estacion: VBLO

Fecha: 2021 10 04

Día del año: 277

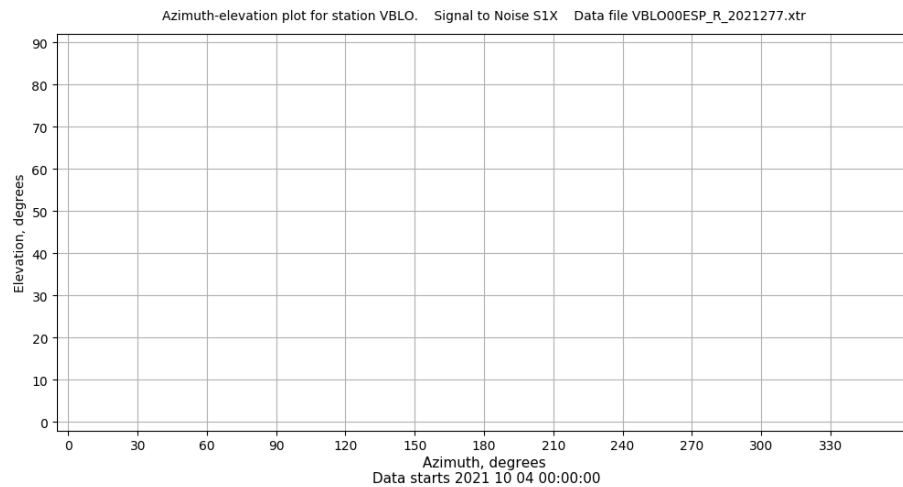
## Señal-Ruido GAL E1 y E5



Data starts 2021 10 04 00:00:00

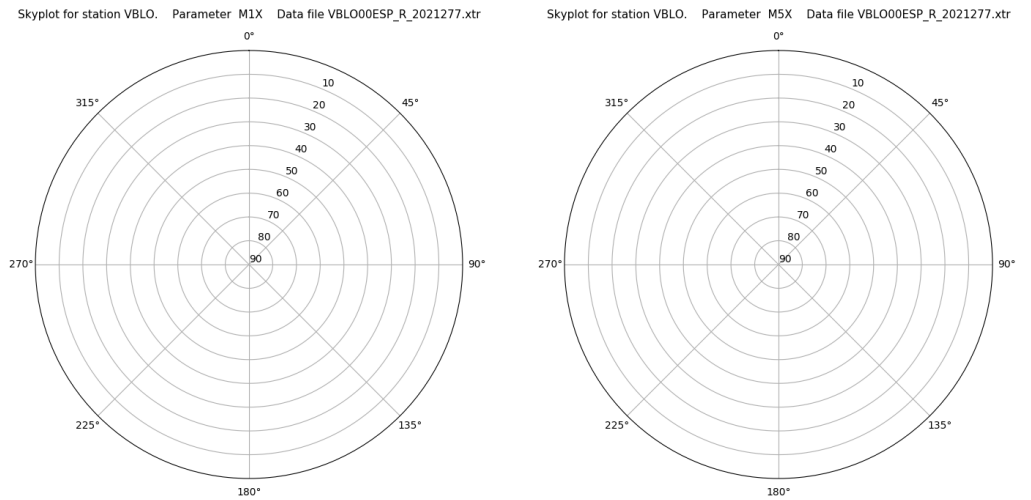
Data starts 2021 10 04 00:00:00

## Azimut-Elevacion



Data starts 2021 10 04 00:00:00

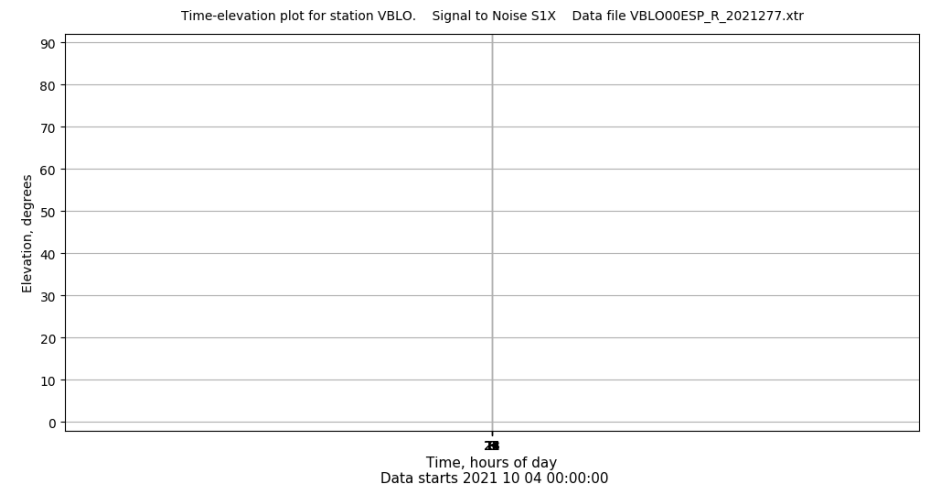
## Multipath GAL E1 y E5



Data starts 2021 10 04 00:00:00

Data starts 2021 10 04 00:00:00

## Tiempo-Elevacion



Data starts 2021 10 04 00:00:00