

# Control de calidad GNSS GPS diario

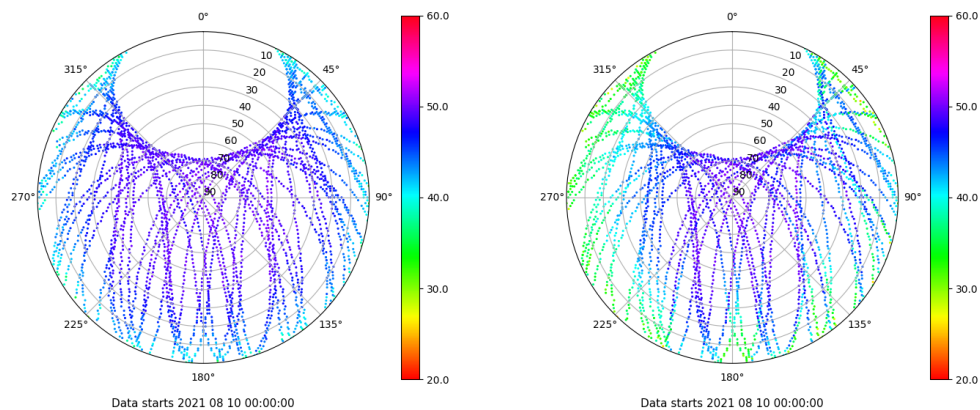
Estacion: VALE

Fecha: 2021 08 10

Dia del año: 222

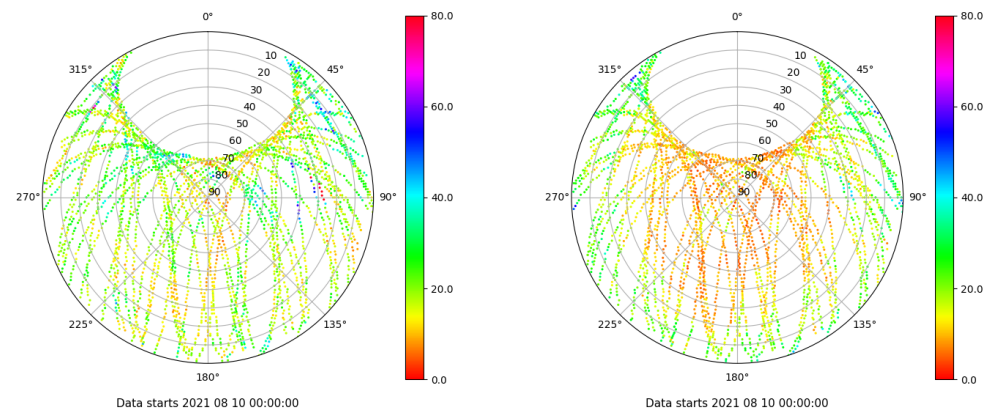
## Señal-Ruido GPS L1 y L2

Skyplot for station VALE. Signal to Noise S1C Data file VALE00ESP\_R\_2021222.xtr Skyplot for station VALE. Signal to Noise S2W Data file VALE00ESP\_R\_2021222.xtr



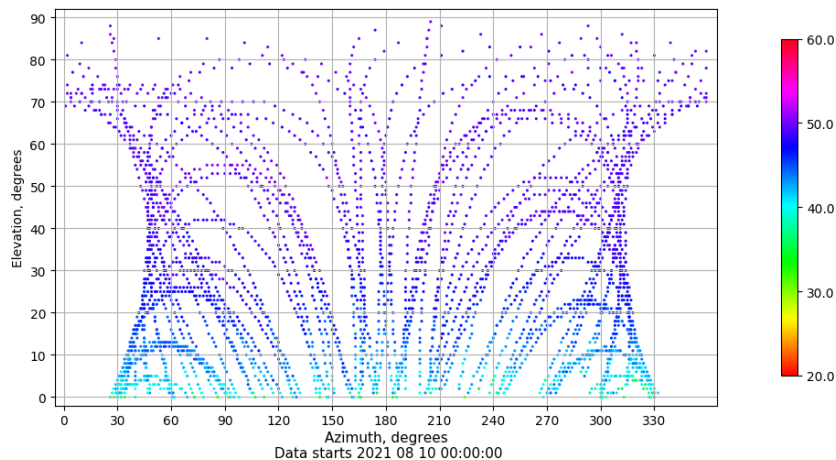
## Multipath GPS L1 y L2

Skyplot for station VALE. Parameter M1C Data file VALE00ESP\_R\_2021222.xtr Skyplot for station VALE. Parameter M2W Data file VALE00ESP\_R\_2021222.xtr



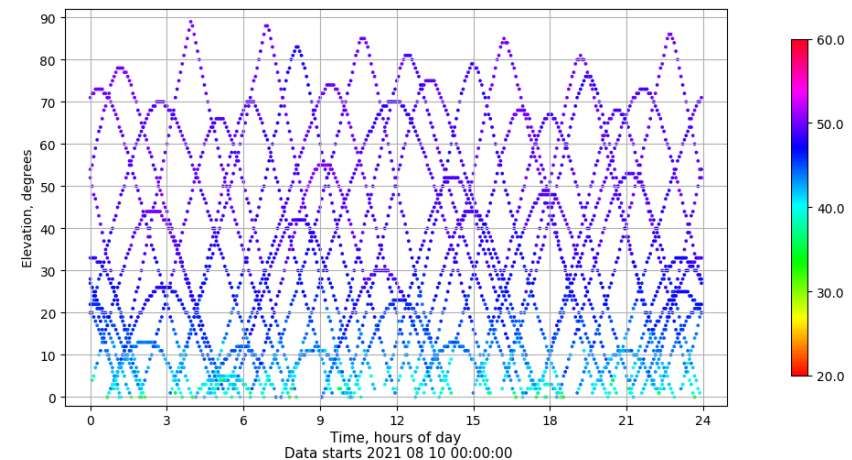
## Azimut-Elevacion

Azimuth-elevation plot for station VALE. Signal to Noise S1C Data file VALE00ESP\_R\_2021222.xtr



## Tiempo-Elevacion

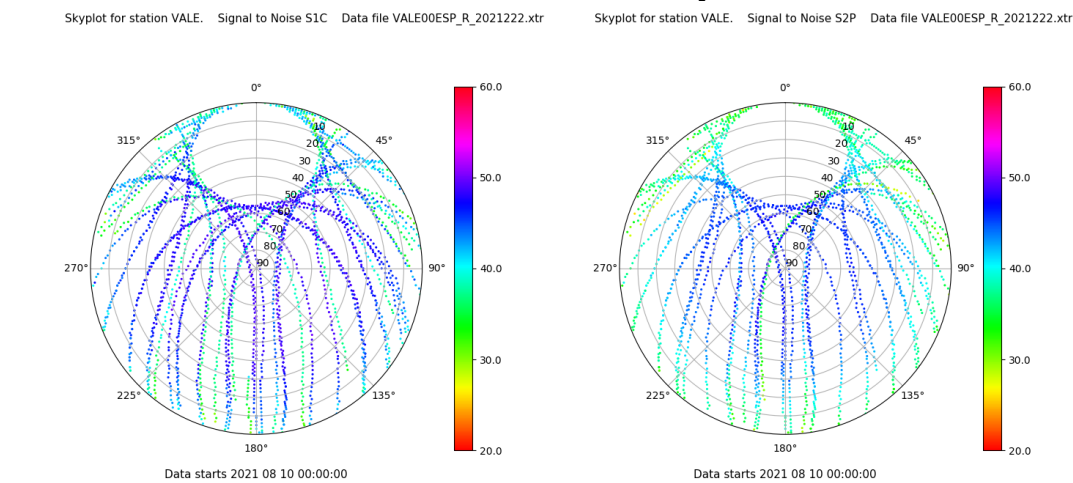
Time-elevation plot for station VALE. Signal to Noise S1C Data file VALE00ESP\_R\_2021222.xtr



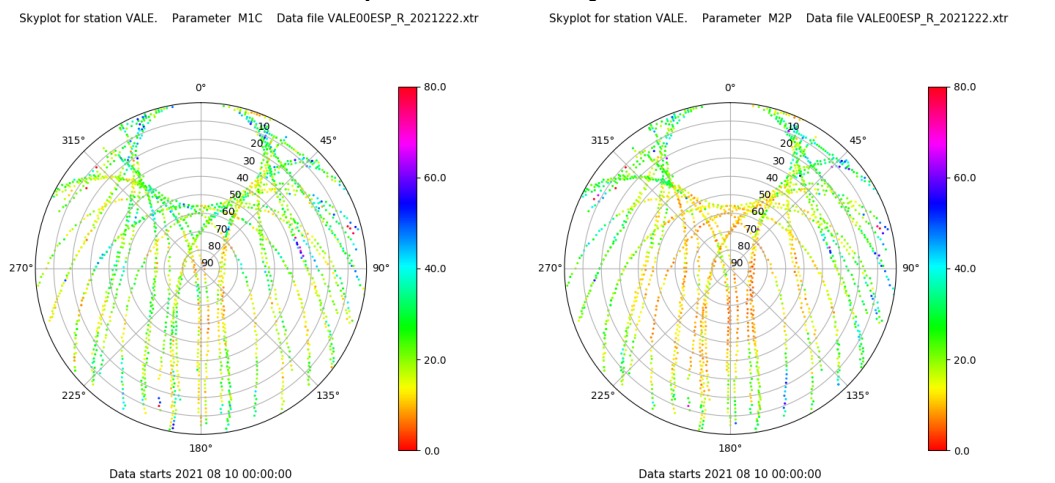
# Control de calidad GNSS GLO diario

Estacion: VALE  
Fecha: 2021 08 10  
Dia del año: 222

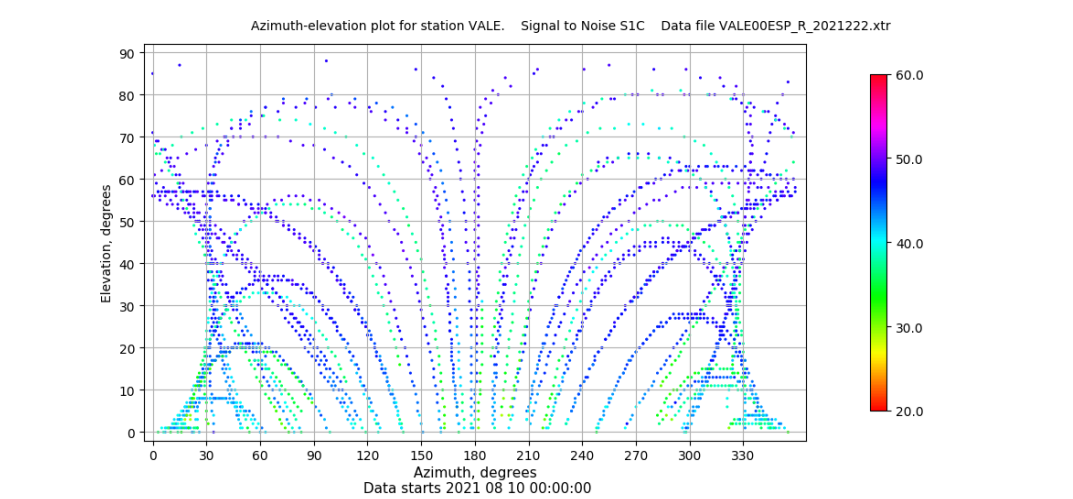
## Señal-Ruido GLO L1 y L2



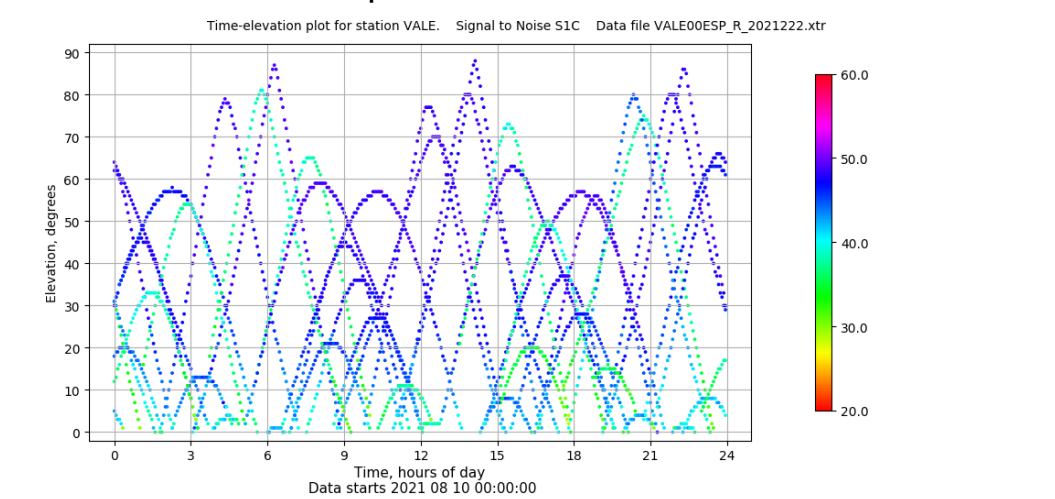
## Multipath GLO L1 y L2



## Azimut-Elevacion



## Tiempo-Elevacion



# Control de calidad GNSS GAL diario

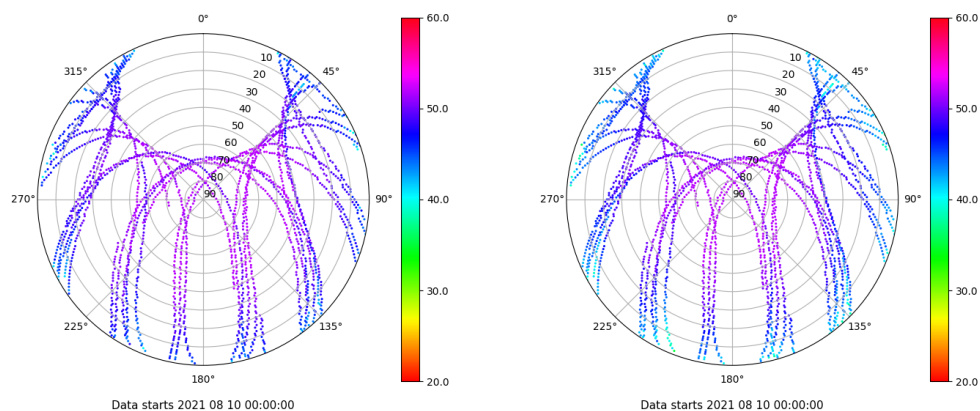
Estacion: VALE

Fecha: 2021 08 10

Dia del año: 222

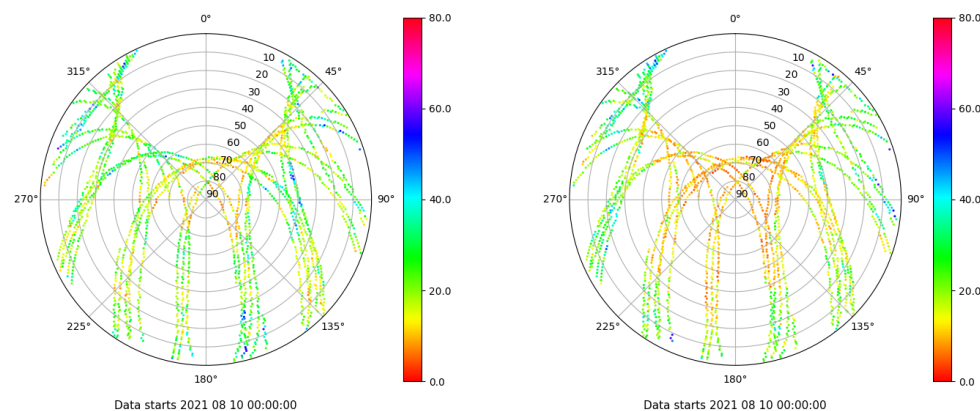
## Señal-Ruido GAL E1 y E5

Skyplot for station VALE. Signal to Noise S1C Data file VALE00ESP\_R\_2021222.xtr Skyplot for station VALE. Signal to Noise S5Q Data file VALE00ESP\_R\_2021222.xtr



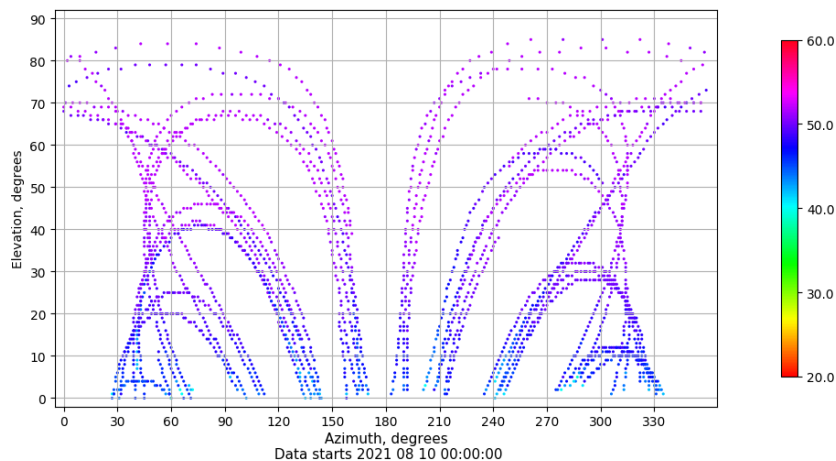
## Multipath GAL E1 y E5

Skyplot for station VALE. Parameter M1C Data file VALE00ESP\_R\_2021222.xtr Skyplot for station VALE. Parameter M5Q Data file VALE00ESP\_R\_2021222.xtr



## Azimut-Elevacion

Azimuth-elevation plot for station VALE. Signal to Noise S1C Data file VALE00ESP\_R\_2021222.xtr



## Tiempo-Elevacion

Time-elevation plot for station VALE. Signal to Noise S1C Data file VALE00ESP\_R\_2021222.xtr

