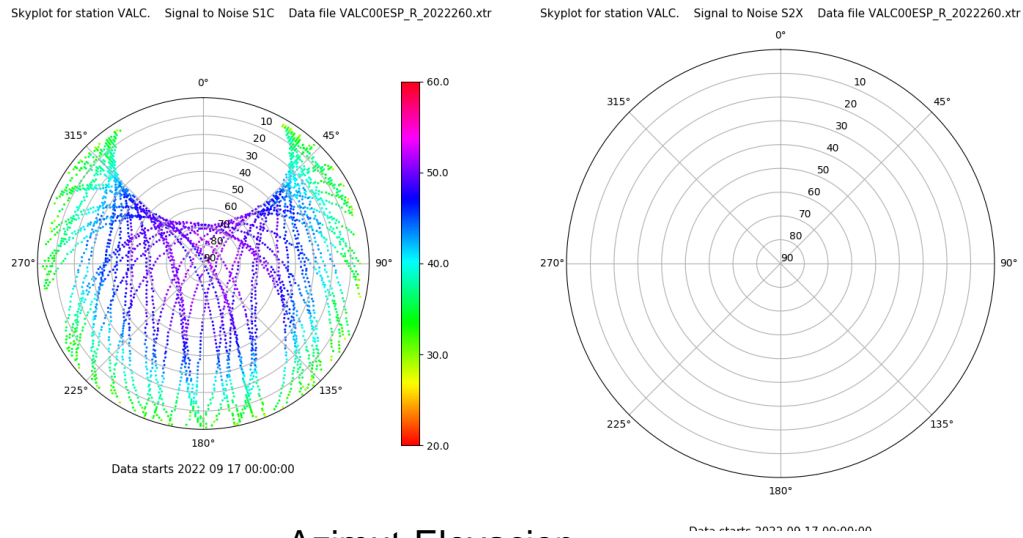


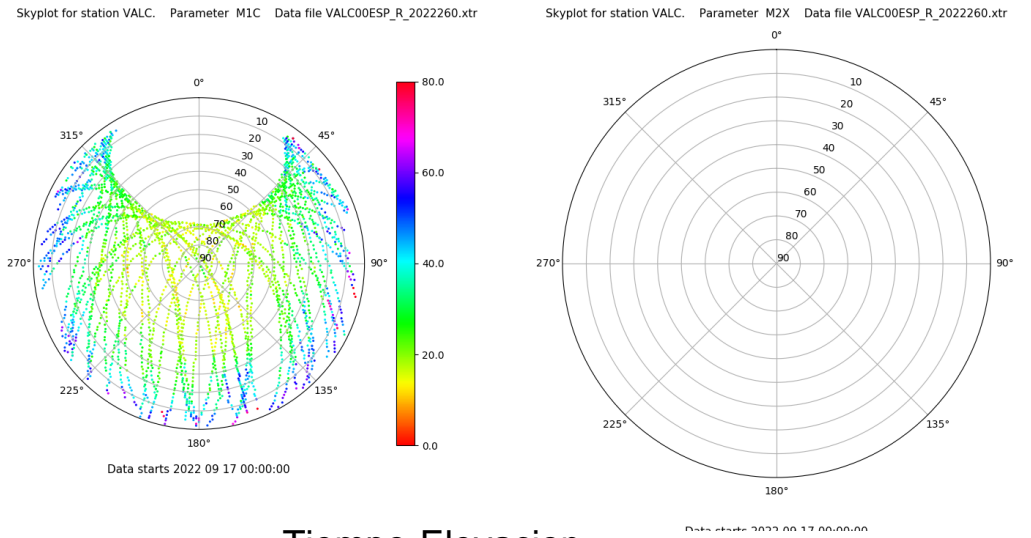
Control de calidad GNSS GPS diario

Estacion: VALC
 Fecha: 2022 09 17
 Dia del año: 260

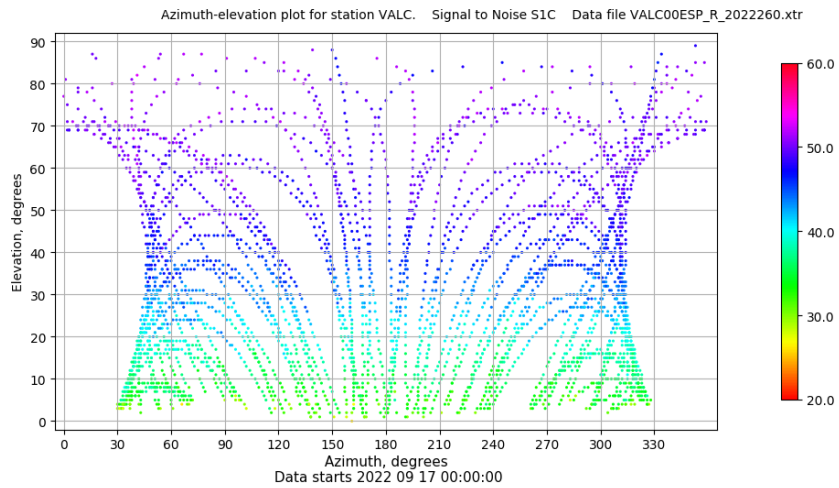
Señal-Ruido GPS L1 y L2



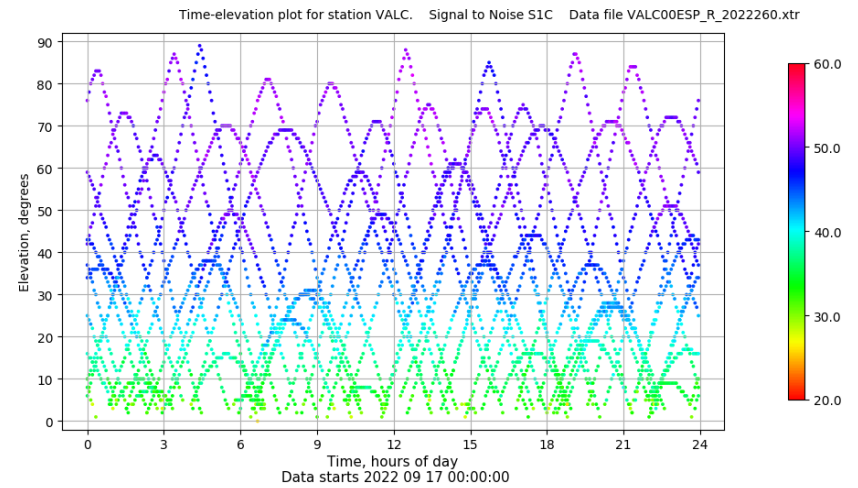
Multipath GPS L1 y L2



Azimut-Elevacion



Tiempo-Elevacion

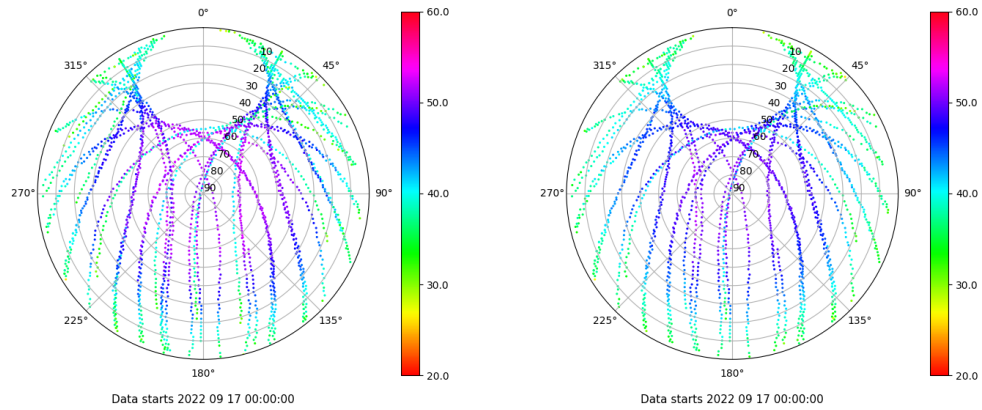


Control de calidad GNSS GLO diario

Estacion: VALC
 Fecha: 2022 09 17
 Día del año: 260

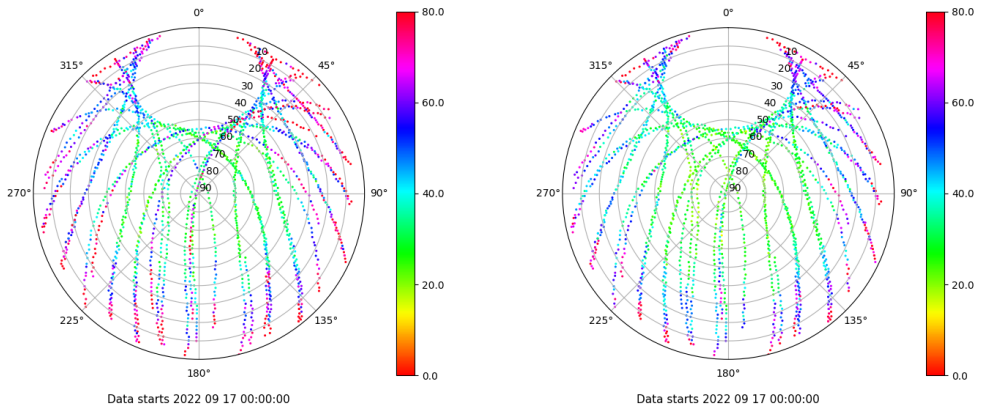
Señal-Ruido GLO L1 y L2

Skyplot for station VALC. Signal to Noise S1C Data file VALC00ESP_R_2022260.xtr Skyplot for station VALC. Signal to Noise S2C Data file VALC00ESP_R_2022260.xtr



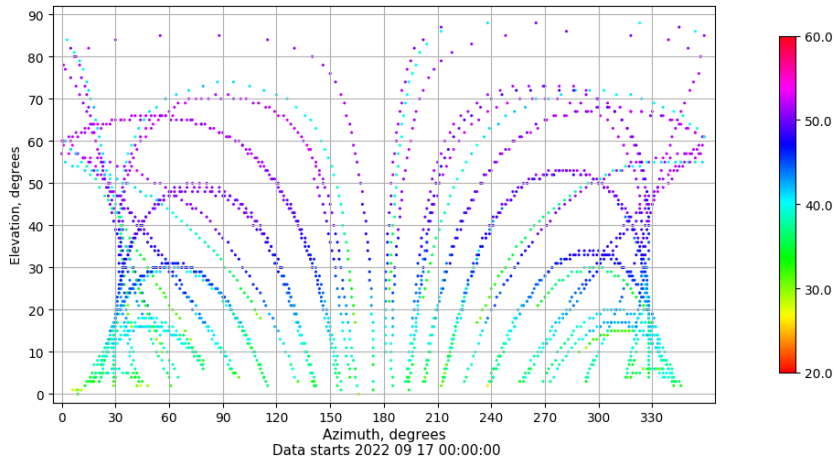
Multipath GLO L1 y L2

Skyplot for station VALC. Parameter M1C Data file VALC00ESP_R_2022260.xtr Skyplot for station VALC. Parameter M2C Data file VALC00ESP_R_2022260.xtr



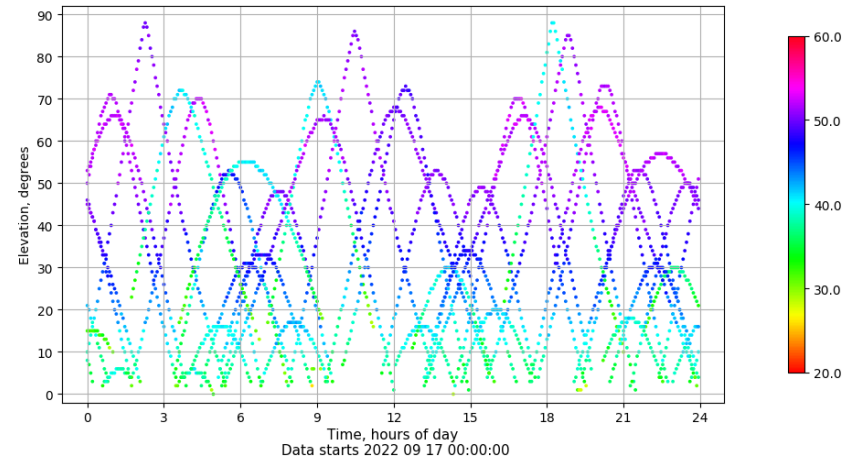
Azimuth-Elevacion

Azimuth-elevation plot for station VALC. Signal to Noise S1C Data file VALC00ESP_R_2022260.xtr



Tiempo-Elevacion

Time-elevation plot for station VALC. Signal to Noise S1C Data file VALC00ESP_R_2022260.xtr

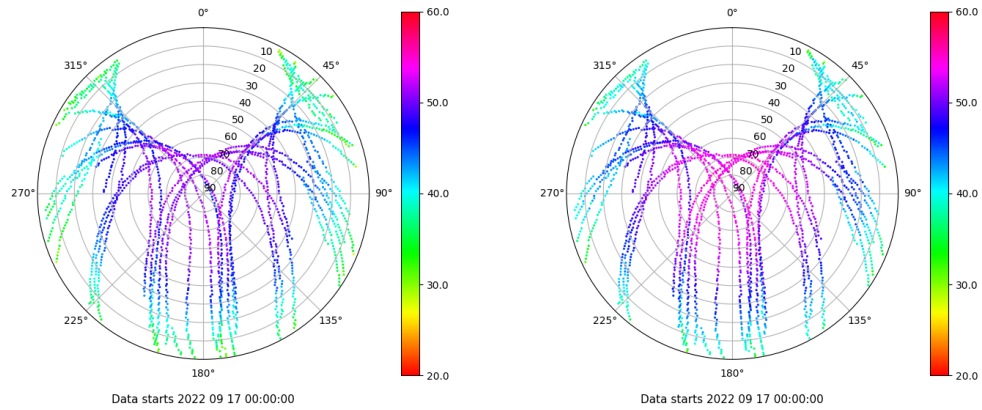


Control de calidad GNSS GAL diario

Estacion: VALC
 Fecha: 2022 09 17
 Dia del año: 260

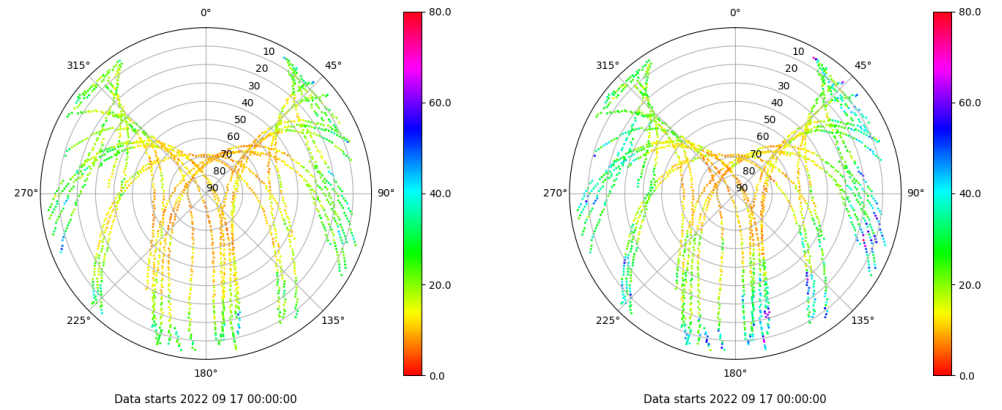
Señal-Ruido GAL E1 y E5

Skyplot for station VALC. Signal to Noise S1X Data file VALC00ESP_R_2022260.xtr Skyplot for station VALC. Signal to Noise S5X Data file VALC00ESP_R_2022260.xtr



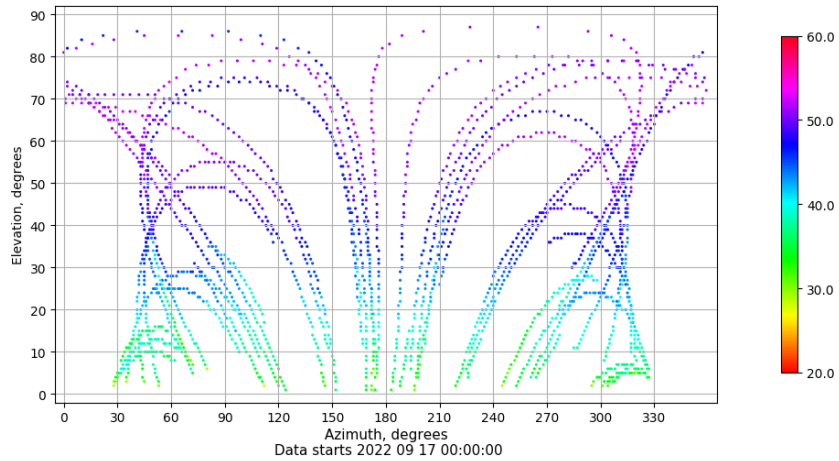
Multipath GAL E1 y E5

Skyplot for station VALC. Parameter M1X Data file VALC00ESP_R_2022260.xtr Skyplot for station VALC. Parameter M5X Data file VALC00ESP_R_2022260.xtr



Azimuth-Elevacion

Azimuth-elevation plot for station VALC. Signal to Noise S1X Data file VALC00ESP_R_2022260.xtr



Tiempo-Elevacion

Time-elevation plot for station VALC. Signal to Noise S1X Data file VALC00ESP_R_2022260.xtr

