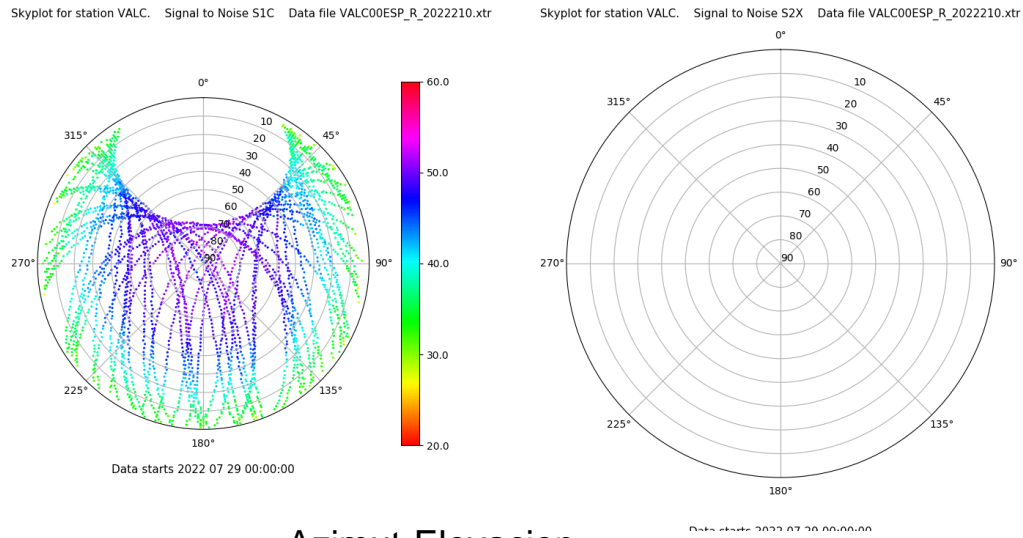


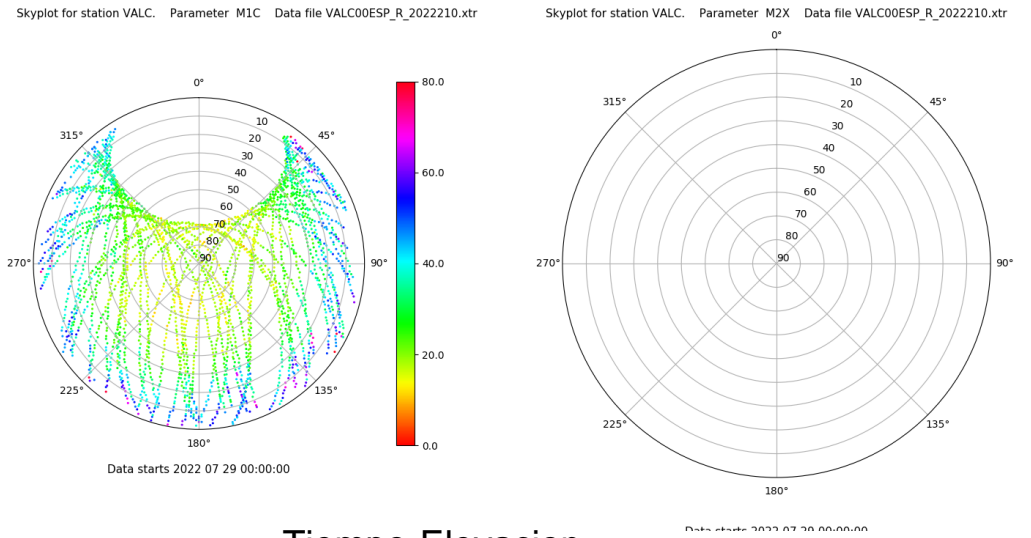
# Control de calidad GNSS GPS diario

Estacion: VALC  
 Fecha: 2022 07 29  
 Dia del año: 210

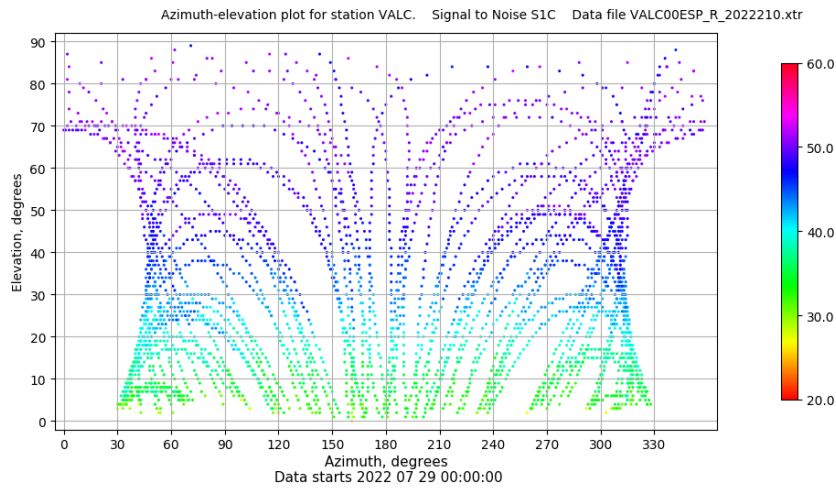
## Señal-Ruido GPS L1 y L2



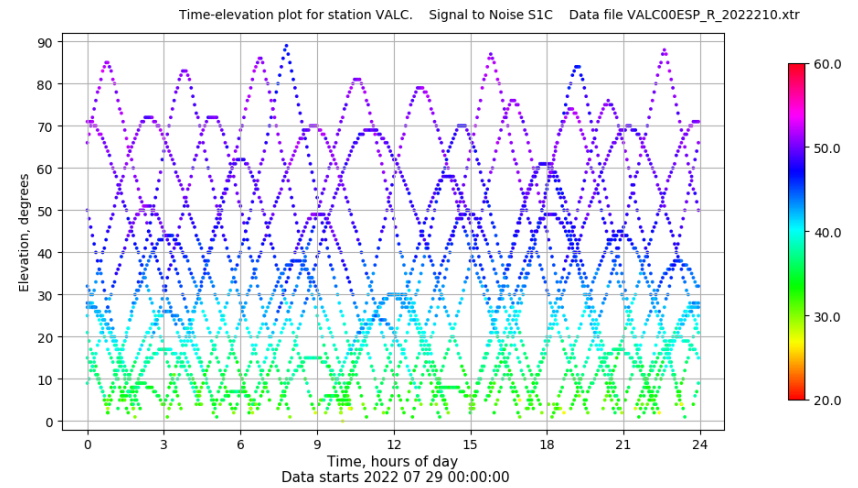
## Multipath GPS L1 y L2



## Azimuth-Elevacion



## Tiempo-Elevacion

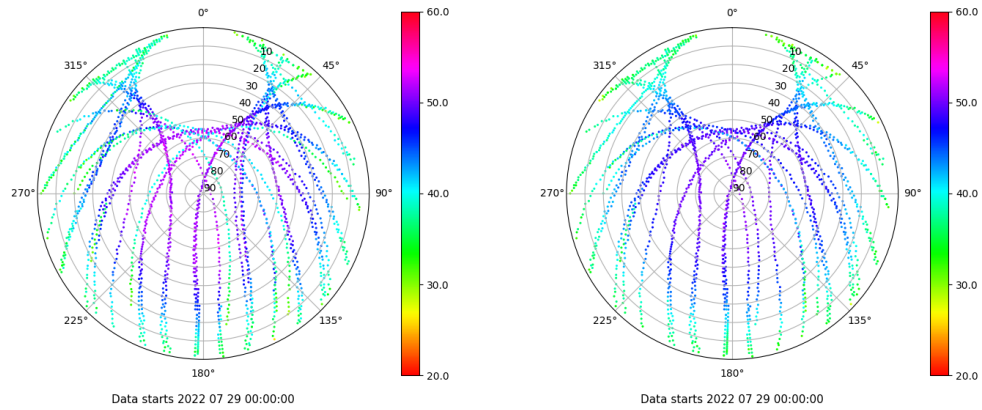


# Control de calidad GNSS GLO diario

Estacion: VALC  
 Fecha: 2022 07 29  
 Dia del año: 210

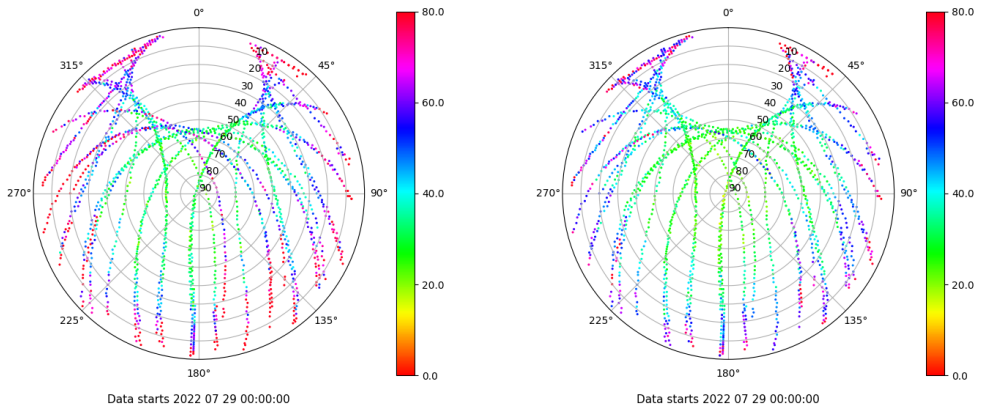
## Señal-Ruido GLO L1 y L2

Skyplot for station VALC. Signal to Noise S1C Data file VALC00ESP\_R\_2022210.xtr Skyplot for station VALC. Signal to Noise S2C Data file VALC00ESP\_R\_2022210.xtr



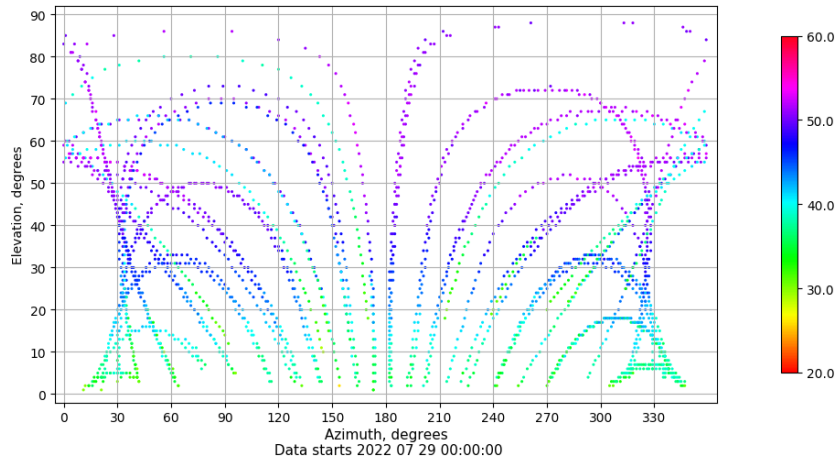
## Multipath GLO L1 y L2

Skyplot for station VALC. Parameter M1C Data file VALC00ESP\_R\_2022210.xtr Skyplot for station VALC. Parameter M2C Data file VALC00ESP\_R\_2022210.xtr



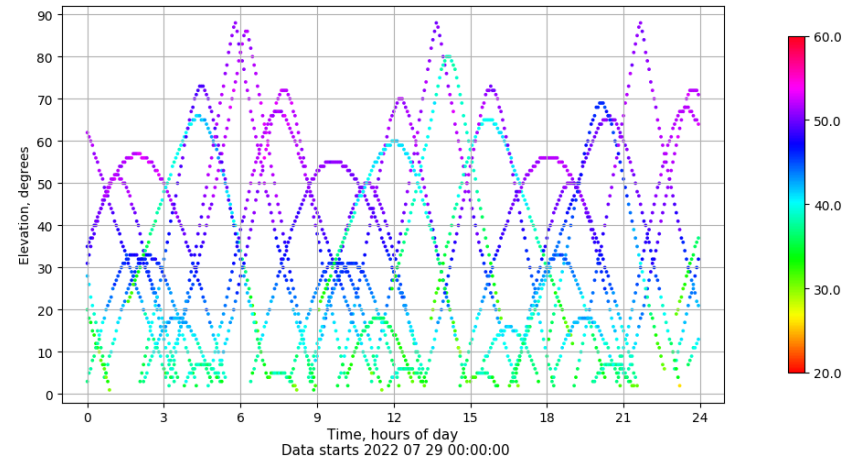
## Azimuth-Elevacion

Azimuth-elevation plot for station VALC. Signal to Noise S1C Data file VALC00ESP\_R\_2022210.xtr



## Tiempo-Elevacion

Time-elevation plot for station VALC. Signal to Noise S1C Data file VALC00ESP\_R\_2022210.xtr

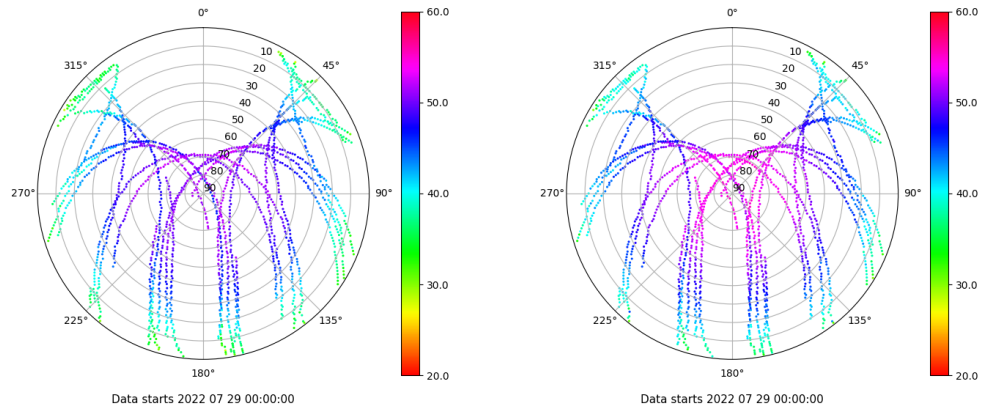


# Control de calidad GNSS GAL diario

Estacion: VALC  
 Fecha: 2022 07 29  
 Dia del año: 210

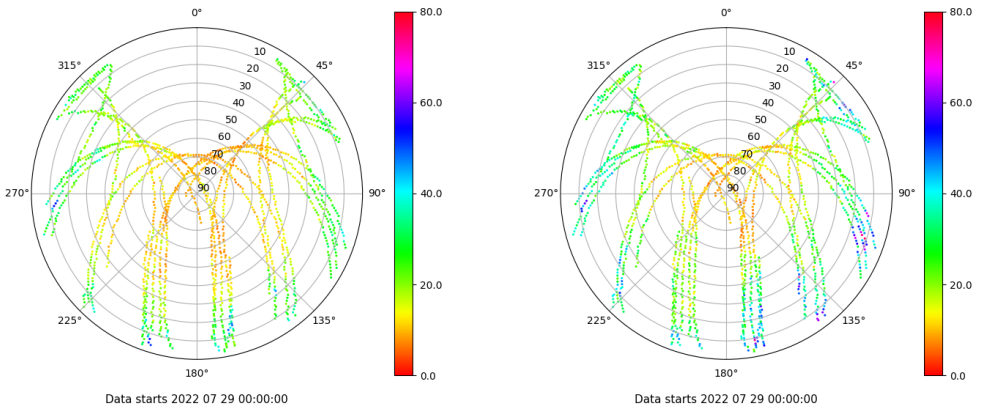
## Señal-Ruido GAL E1 y E5

Skyplot for station VALC. Signal to Noise S1X Data file VALC00ESP\_R\_2022210.xtr Skyplot for station VALC. Signal to Noise S5X Data file VALC00ESP\_R\_2022210.xtr



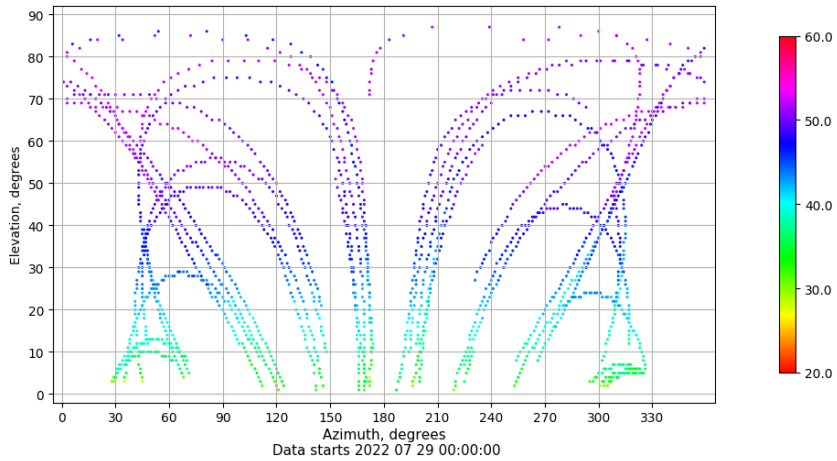
## Multipath GAL E1 y E5

Skyplot for station VALC. Parameter M1X Data file VALC00ESP\_R\_2022210.xtr Skyplot for station VALC. Parameter M5X Data file VALC00ESP\_R\_2022210.xtr



## Azimuth-Elevacion

Azimuth-elevation plot for station VALC. Signal to Noise S1X Data file VALC00ESP\_R\_2022210.xtr



## Tiempo-Elevacion

Time-elevation plot for station VALC. Signal to Noise S1X Data file VALC00ESP\_R\_2022210.xtr

