

Control de calidad GNSS GPS diario

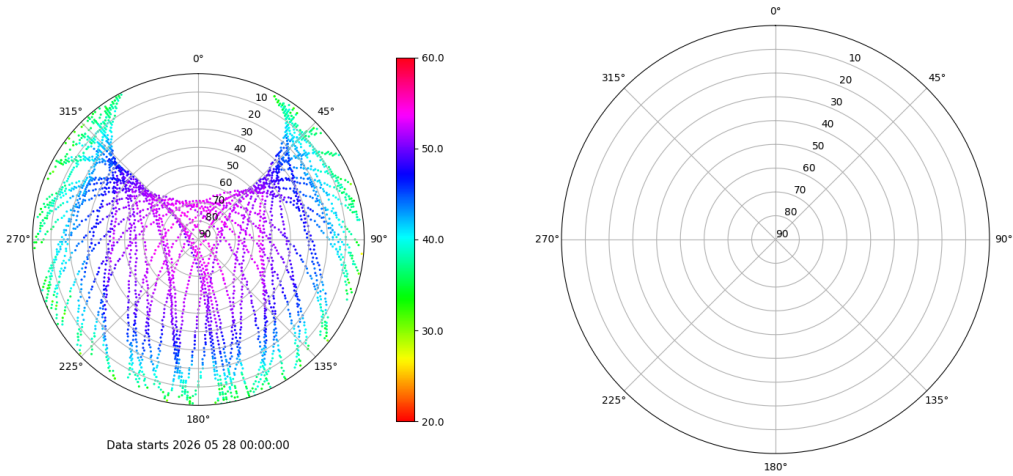
Estacion: UT11

Fecha: 2026 05 28

Dia del año: 148

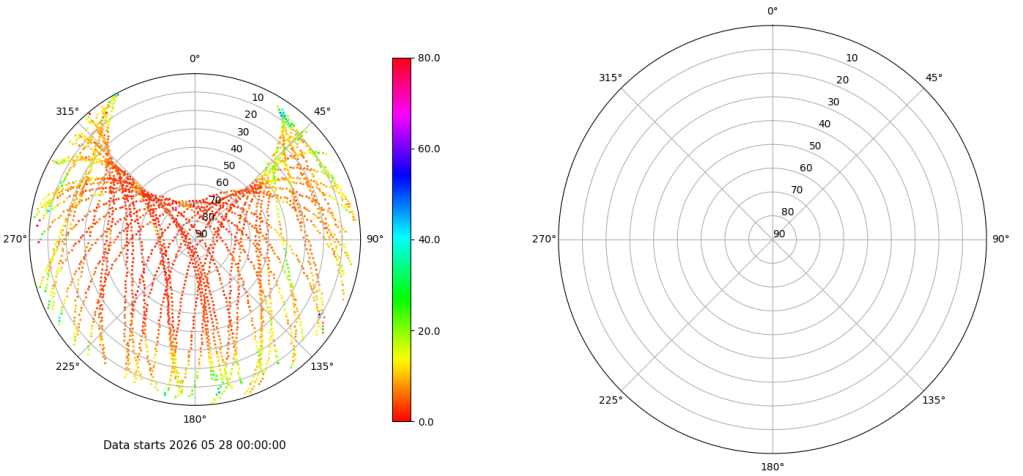
Señal-Ruido GPS L1 y L2

Skyplot for station UT11. Signal to Noise S1C Data file UTI100ESP_R_2026148.xtr Skyplot for station UT11. Signal to Noise S2X Data file UTI100ESP_R_2026148.xtr



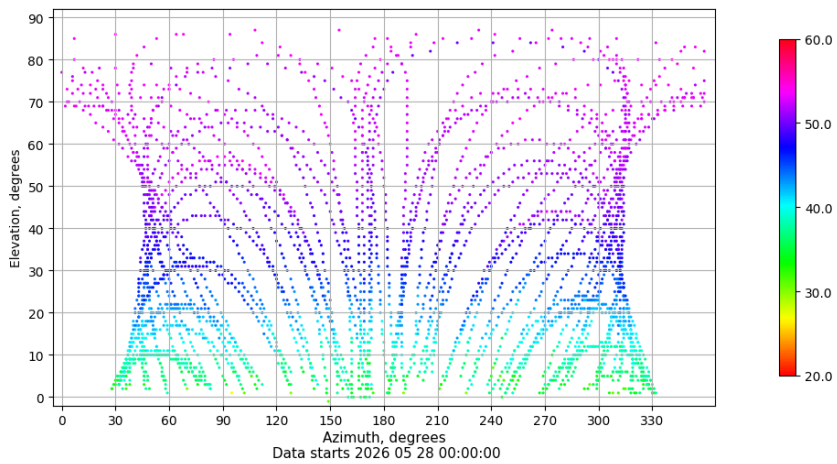
Multipath GPS L1 y L2

Skyplot for station UT11. Parameter M1C Data file UTI100ESP_R_2026148.xtr Skyplot for station UT11. Parameter M2X Data file UTI100ESP_R_2026148.xtr



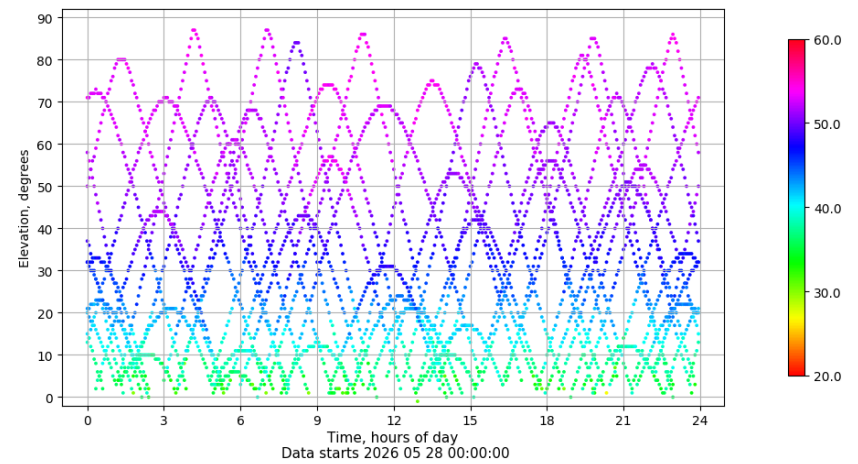
Azimut-Elevacion

Azimuth-elevation plot for station UT11. Signal to Noise S1C Data file UTI100ESP_R_2026148.xtr



Tiempo-Elevacion

Time-elevation plot for station UT11. Signal to Noise S1C Data file UTI100ESP_R_2026148.xtr



Control de calidad GNSS GLO diario

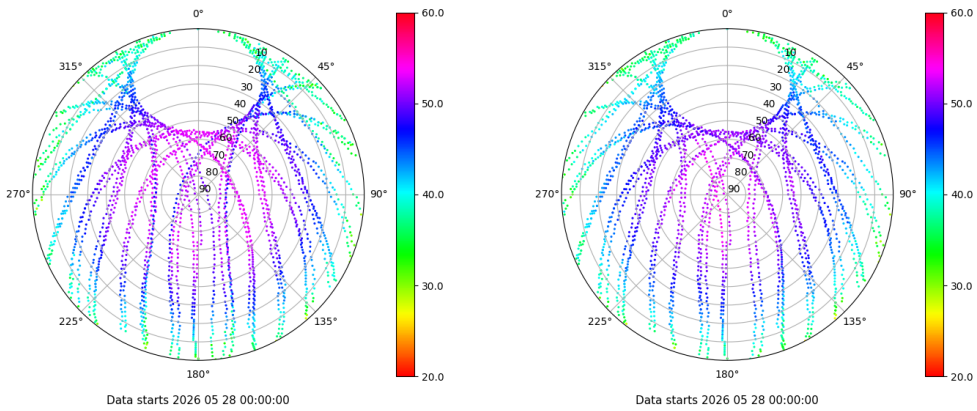
Estacion: UT11

Fecha: 2026 05 28

Dia del año: 148

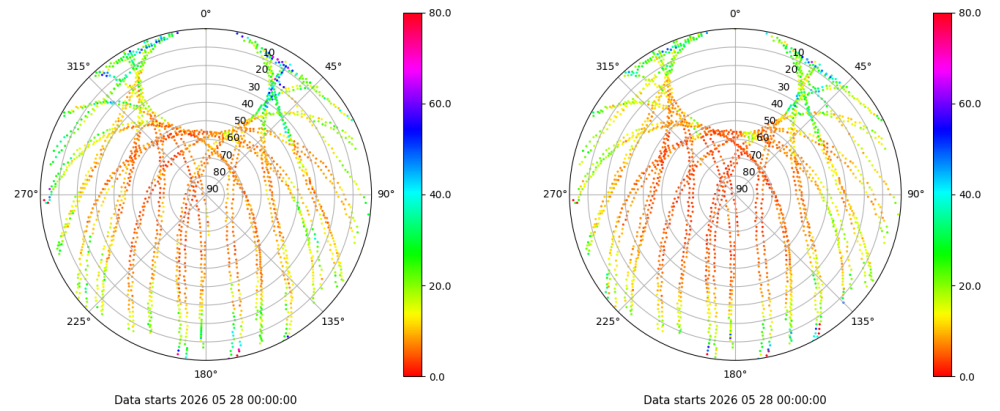
Señal-Ruido GLO L1 y L2

Skyplot for station UT11. Signal to Noise S1C Data file UTI100ESP_R_2026148.xtr Skyplot for station UT11. Signal to Noise S2C Data file UTI100ESP_R_2026148.xtr



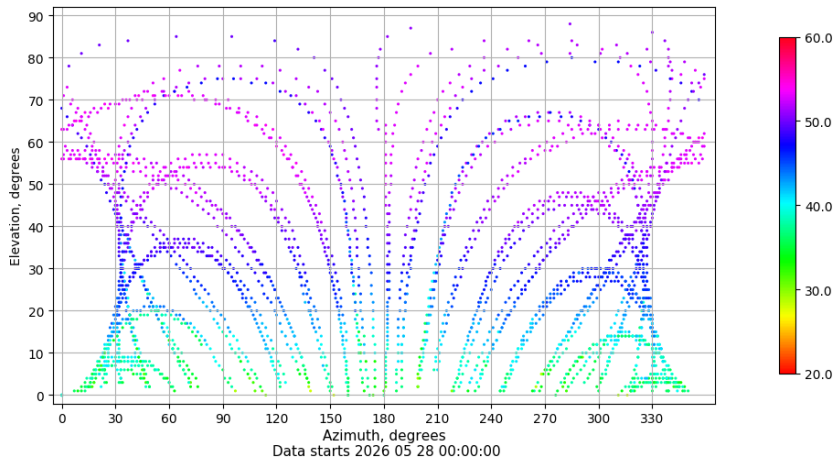
Multipath GLO L1 y L2

Skyplot for station UT11. Parameter M1C Data file UTI100ESP_R_2026148.xtr Skyplot for station UT11. Parameter M2C Data file UTI100ESP_R_2026148.xtr



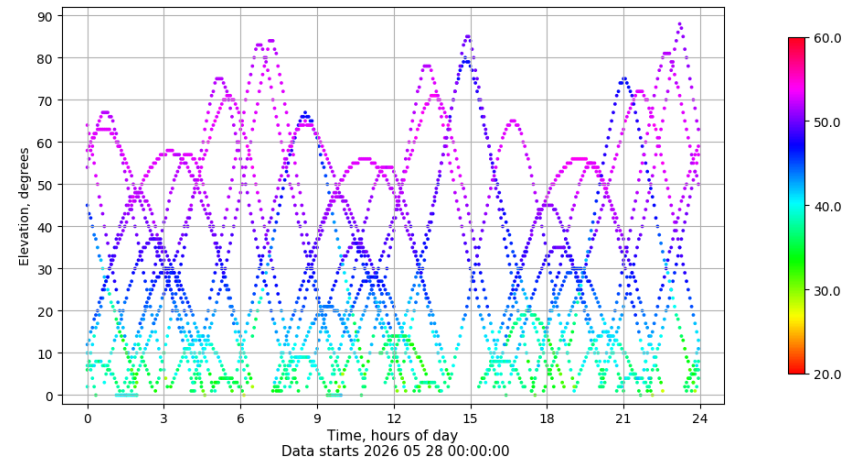
Azimuth-Elevacion

Azimuth-elevation plot for station UT11. Signal to Noise S1C Data file UTI100ESP_R_2026148.xtr



Tiempo-Elevacion

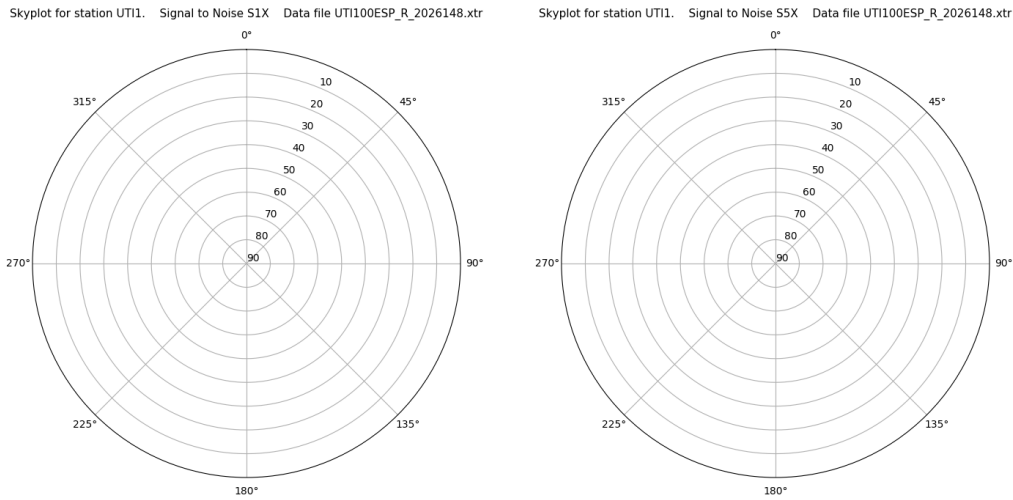
Time-elevation plot for station UT11. Signal to Noise S1C Data file UTI100ESP_R_2026148.xtr



Control de calidad GNSS GAL diario

Estacion: UT11
 Fecha: 2026 05 28
 Dia del año: 148

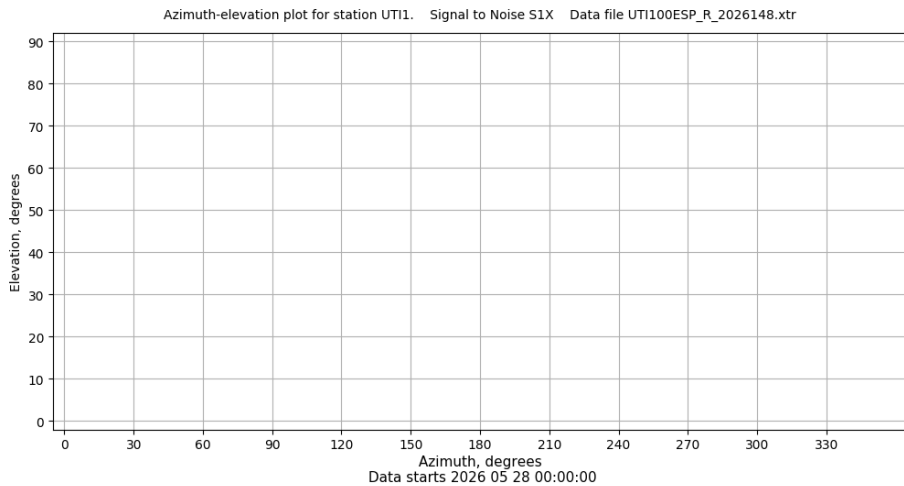
Señal-Ruido GAL E1 y E5



Data starts 2026 05 28 00:00:00

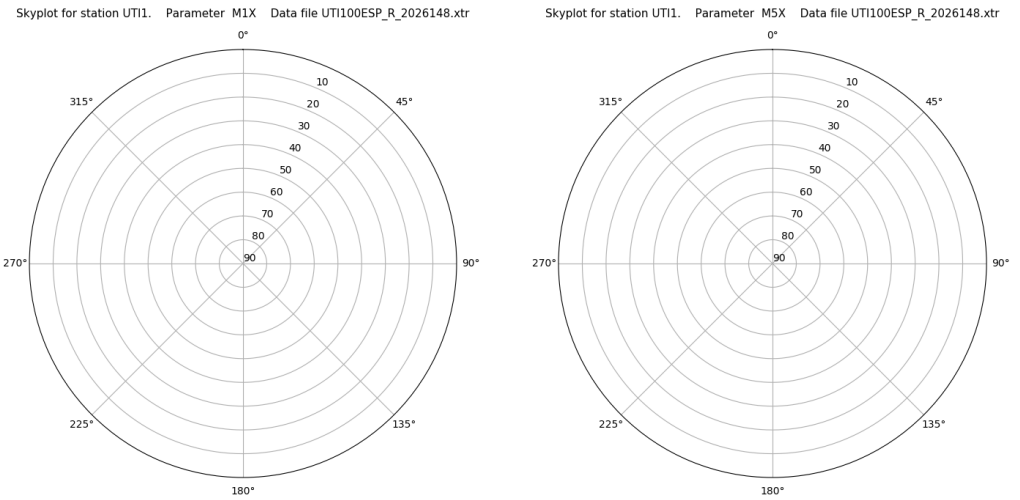
Data starts 2026 05 28 00:00:00

Azimut-Elevacion



Data starts 2026 05 28 00:00:00

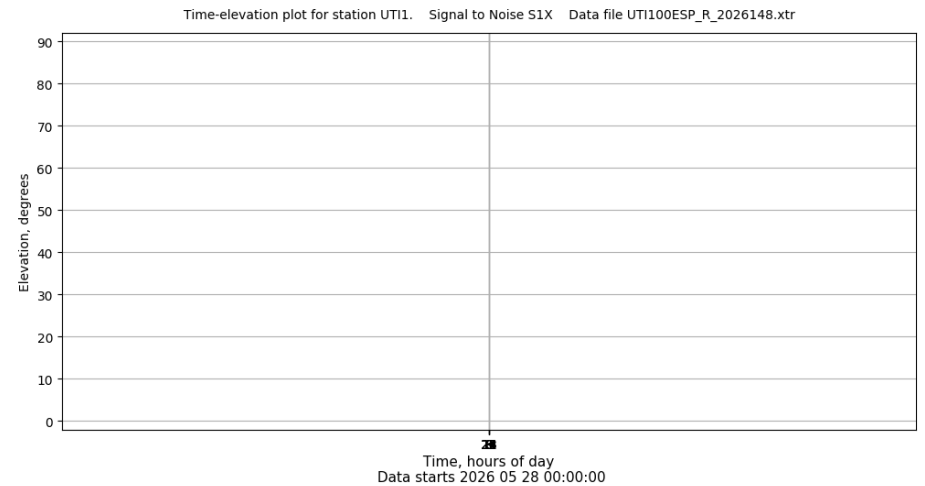
Multipath GAL E1 y E5



Data starts 2026 05 28 00:00:00

Data starts 2026 05 28 00:00:00

Tiempo-Elevacion



Data starts 2026 05 28 00:00:00