

Control de calidad GNSS GPS diario

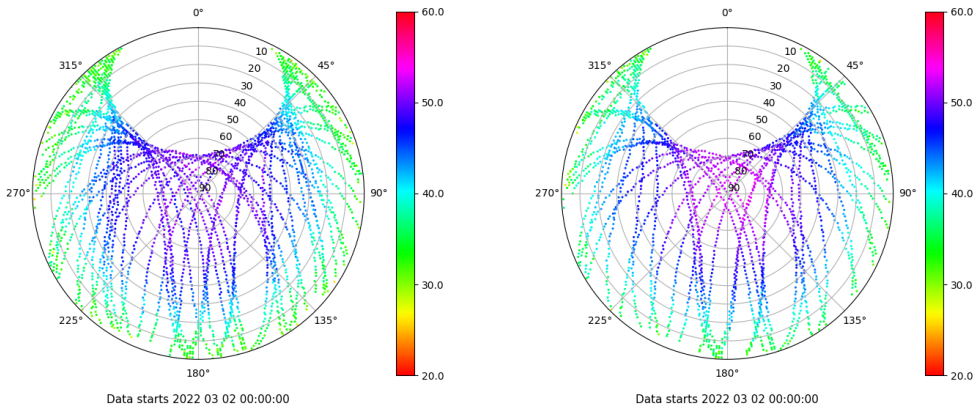
Estacion: UT11

Fecha: 2022 03 02

Dia del año: 061

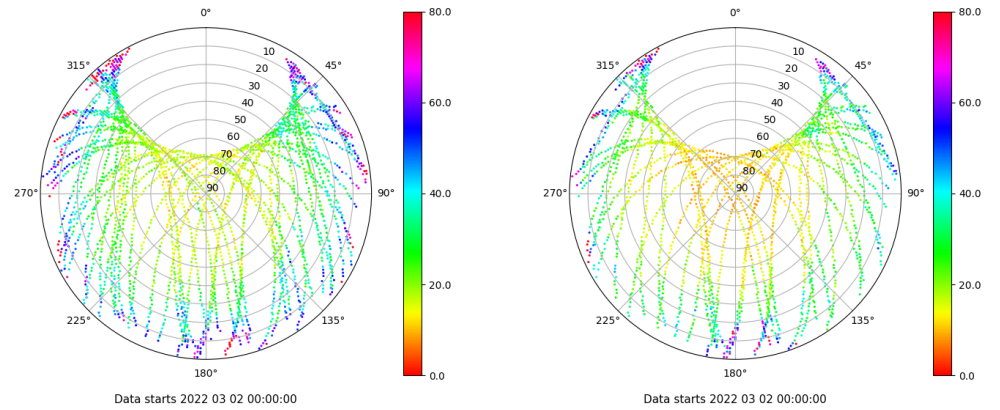
Señal-Ruido GPS L1 y L2

Skyplot for station UT11. Signal to Noise S1C Data file UTI100ESP_R_2022061.xtr Skyplot for station UT11. Signal to Noise S2X Data file UTI100ESP_R_2022061.xtr



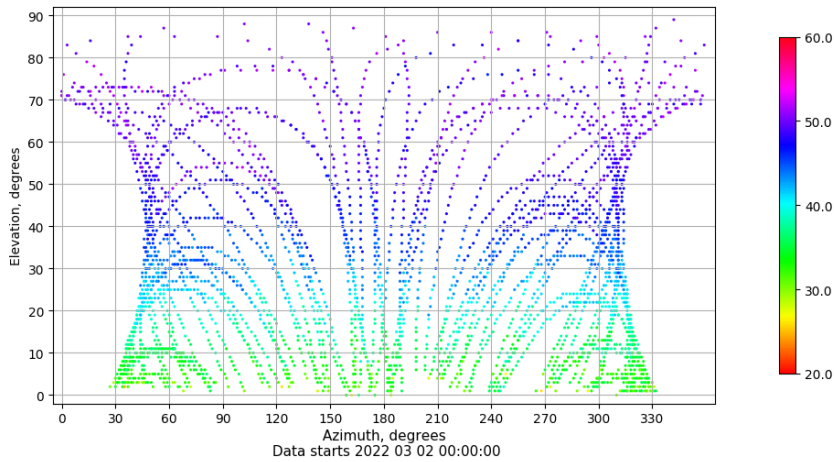
Multipath GPS L1 y L2

Skyplot for station UT11. Parameter M1C Data file UTI100ESP_R_2022061.xtr Skyplot for station UT11. Parameter M2X Data file UTI100ESP_R_2022061.xtr



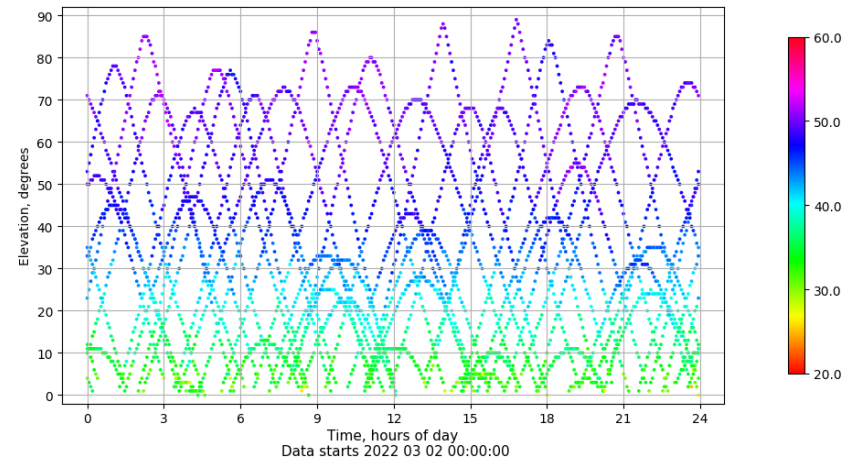
Azimuth-Elevacion

Azimuth-elevation plot for station UT11. Signal to Noise S1C Data file UTI100ESP_R_2022061.xtr



Tiempo-Elevacion

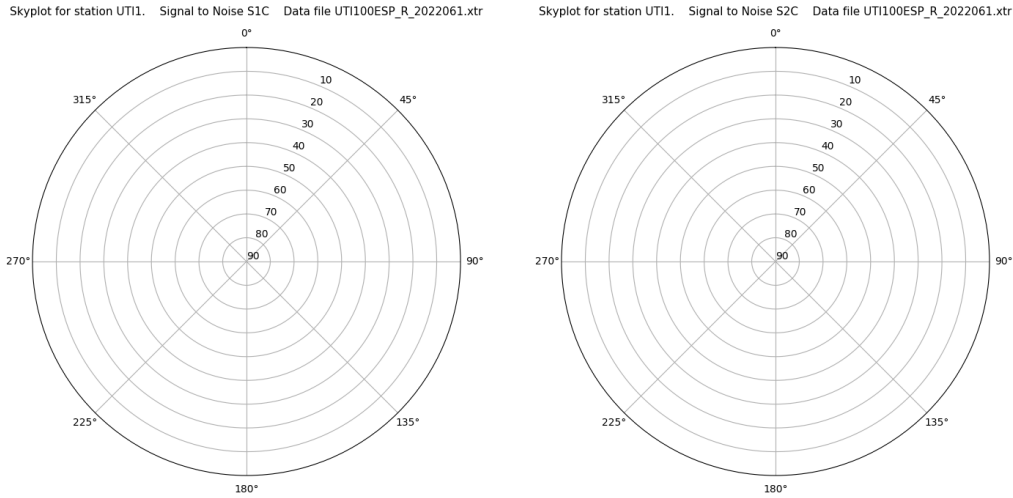
Time-elevation plot for station UT11. Signal to Noise S1C Data file UTI100ESP_R_2022061.xtr



Control de calidad GNSS GLO diario

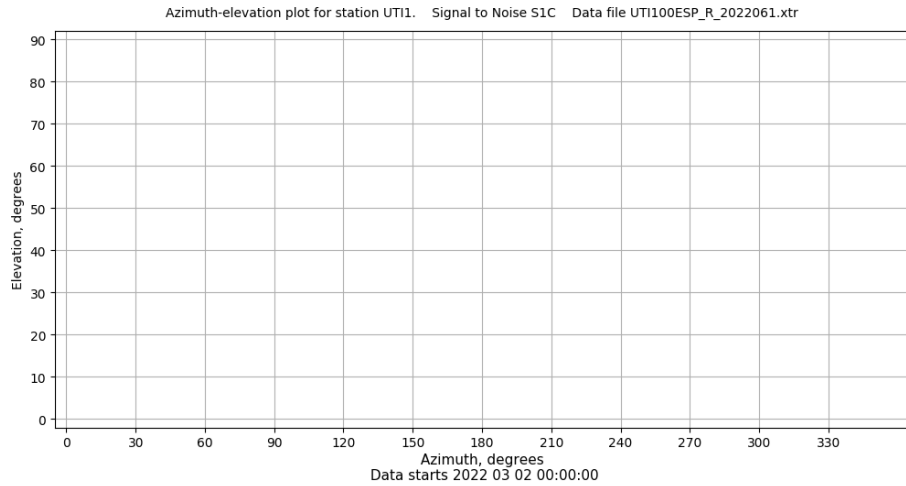
Estacion: UTI1
Fecha: 2022 03 02
Dia del año: 061

Señal-Ruido GLO L1 y L2



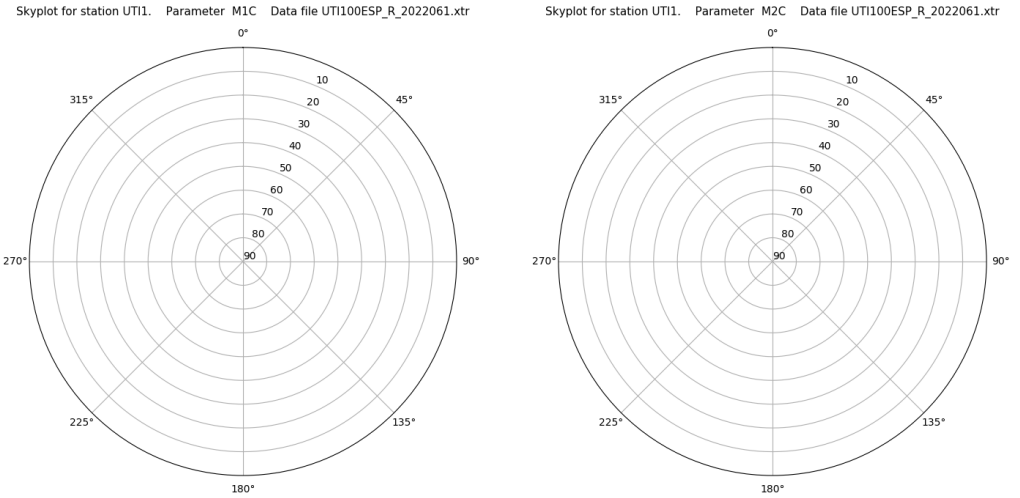
Data starts 2022 03 02 00:00:00

Azimut-Elevacion



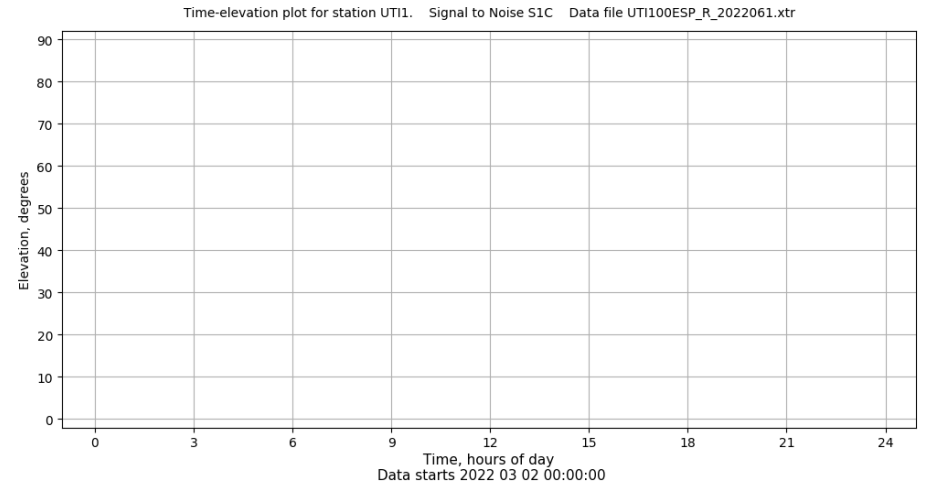
Data starts 2022 03 02 00:00:00

Multipath GLO L1 y L2



Data starts 2022 03 02 00:00:00

Tiempo-Elevacion



Data starts 2022 03 02 00:00:00

Control de calidad GNSS GAL diario

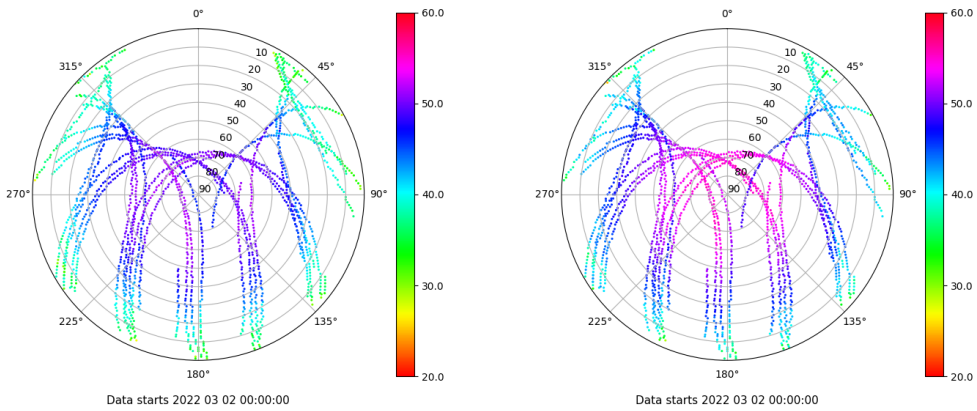
Estacion: UT11

Fecha: 2022 03 02

Dia del año: 061

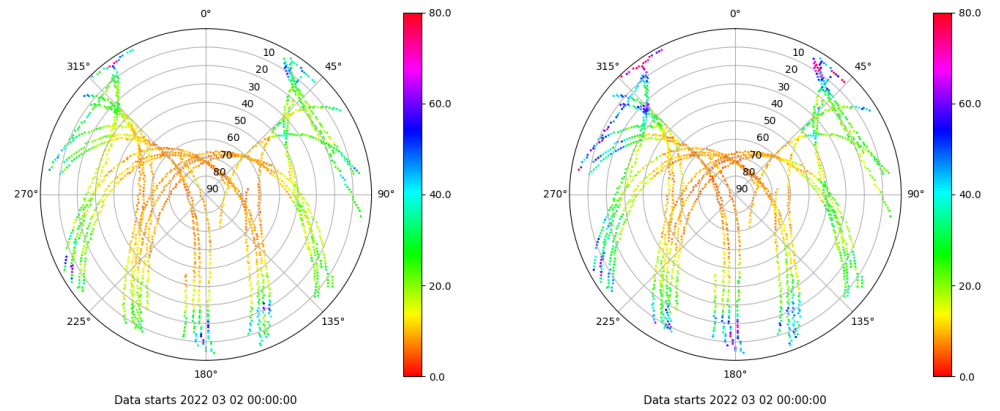
Señal-Ruido GAL E1 y E5

Skyplot for station UT11. Signal to Noise S1X Data file UTI100ESP_R_2022061.xtr Skyplot for station UT11. Signal to Noise S5X Data file UTI100ESP_R_2022061.xtr



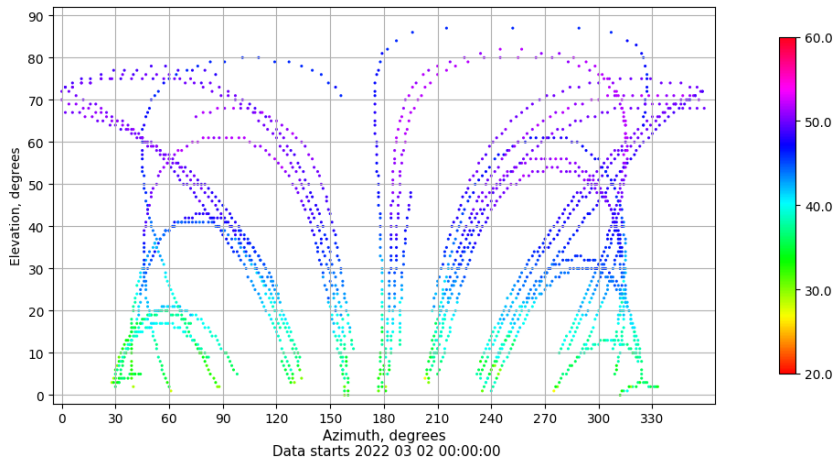
Multipath GAL E1 y E5

Skyplot for station UT11. Parameter M1X Data file UTI100ESP_R_2022061.xtr Skyplot for station UT11. Parameter M5X Data file UTI100ESP_R_2022061.xtr



Azimuth-Elevacion

Azimuth-elevation plot for station UT11. Signal to Noise S1X Data file UTI100ESP_R_2022061.xtr



Tiempo-Elevacion

Time-elevation plot for station UT11. Signal to Noise S1X Data file UTI100ESP_R_2022061.xtr

