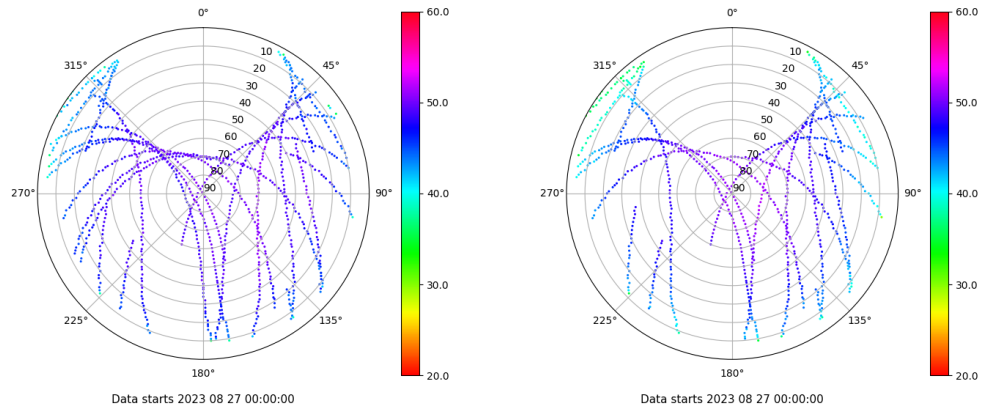


# Control de calidad GNSS GPS diario

Estacion: TRAU  
 Fecha: 2023 08 27  
 Dia del año: 239

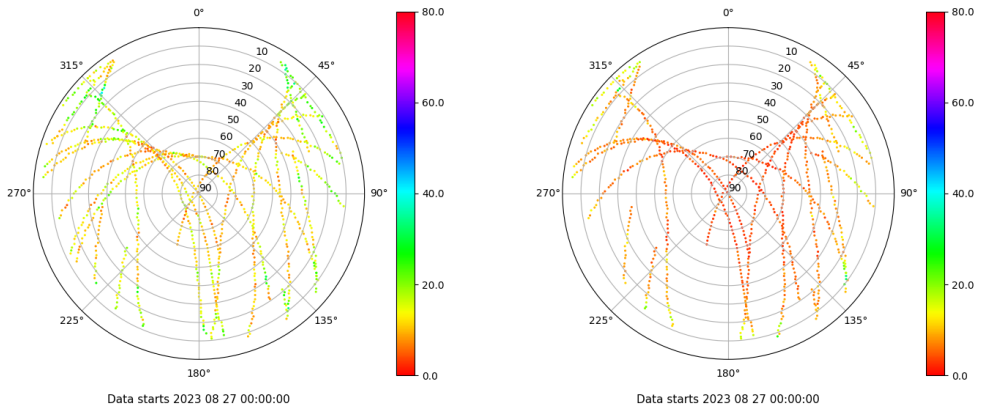
## Señal-Ruido GPS L1 y L2

Skyplot for station TRAU. Signal to Noise S1C Data file TRAU00ESP\_R\_2023239.xtr Skyplot for station TRAU. Signal to Noise S2S Data file TRAU00ESP\_R\_2023239.xtr



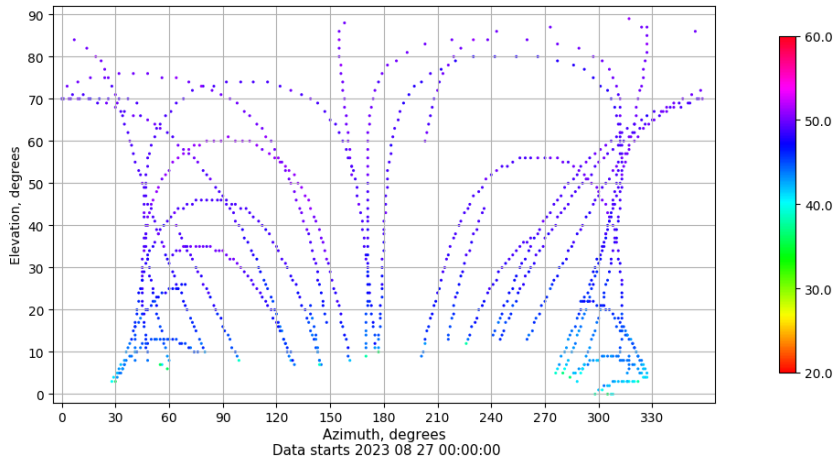
## Multipath GPS L1 y L2

Skyplot for station TRAU. Parameter M1C Data file TRAU00ESP\_R\_2023239.xtr Skyplot for station TRAU. Parameter M2S Data file TRAU00ESP\_R\_2023239.xtr



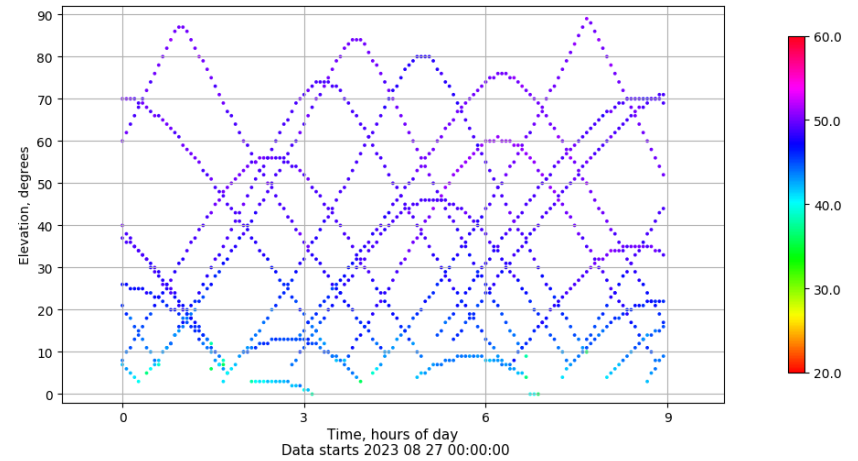
## Azimuth-Elevacion

Azimuth-elevation plot for station TRAU. Signal to Noise S1C Data file TRAU00ESP\_R\_2023239.xtr



## Tiempo-Elevacion

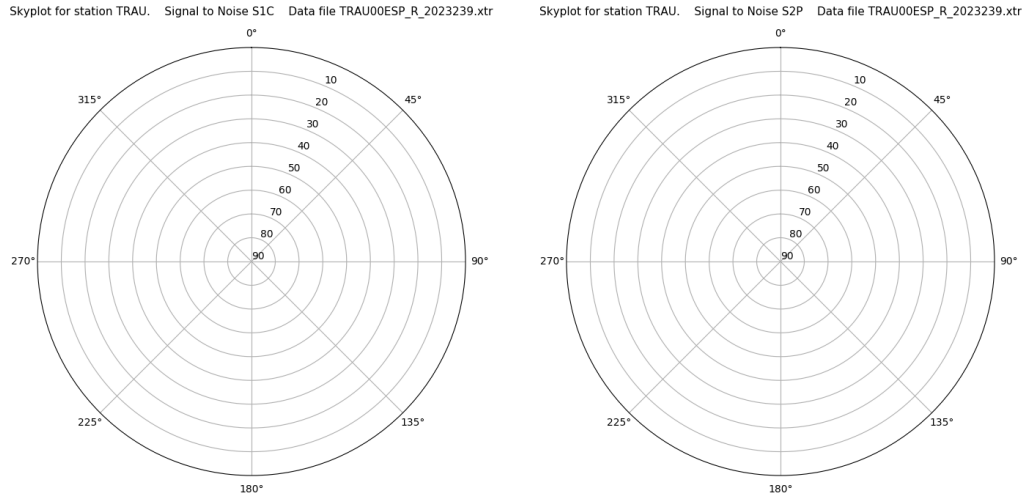
Time-elevation plot for station TRAU. Signal to Noise S1C Data file TRAU00ESP\_R\_2023239.xtr



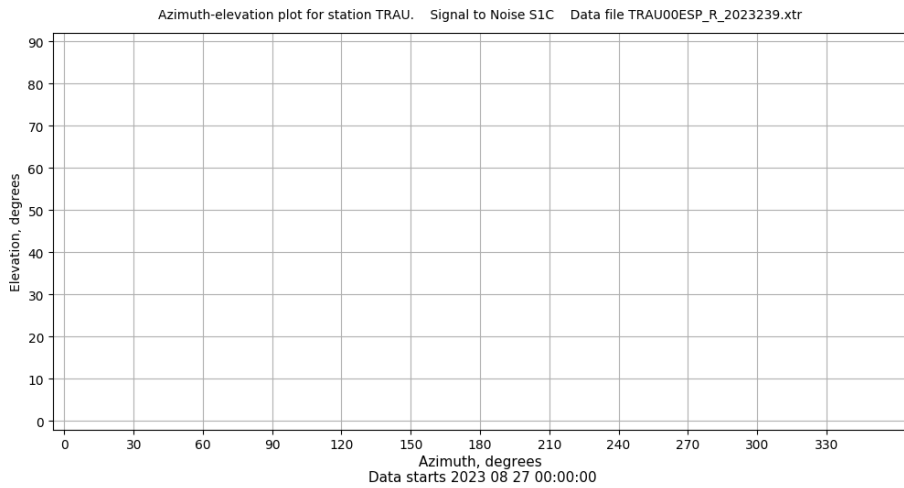
# Control de calidad GNSS GLO diario

Estacion: TRAU  
 Fecha: 2023 08 27  
 Dia del año: 239

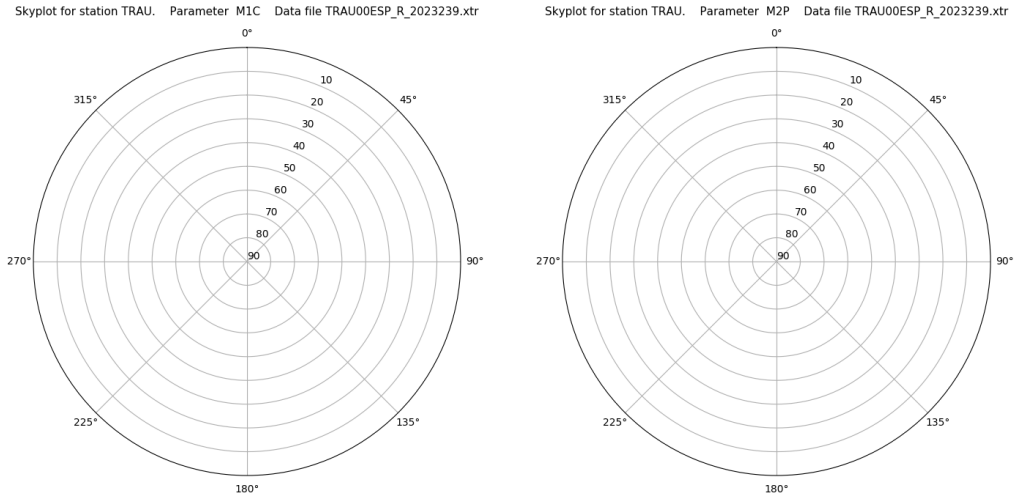
## Señal-Ruido GLO L1 y L2



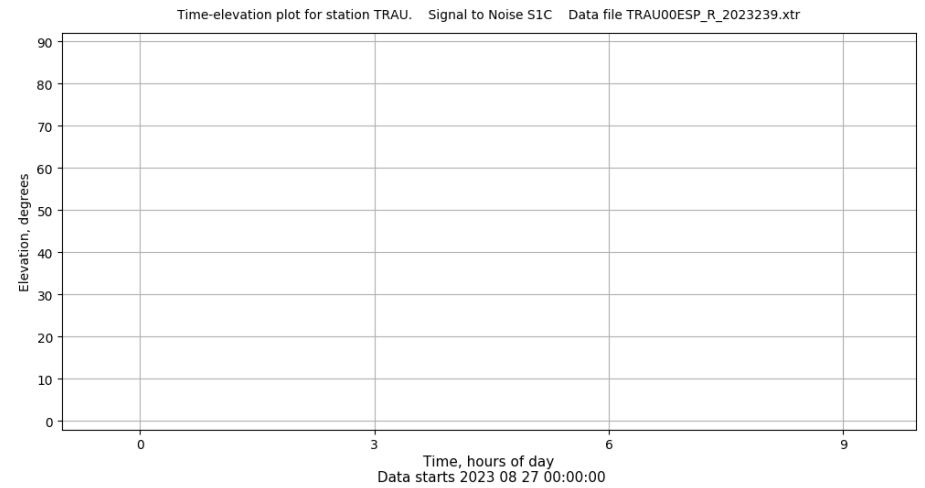
## Azimut-Elevacion



## Multipath GLO L1 y L2



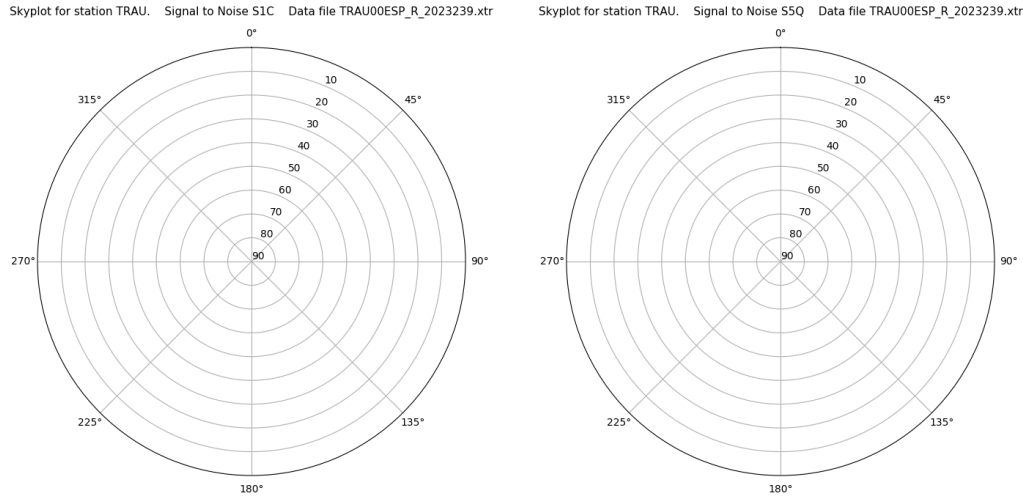
## Tiempo-Elevacion



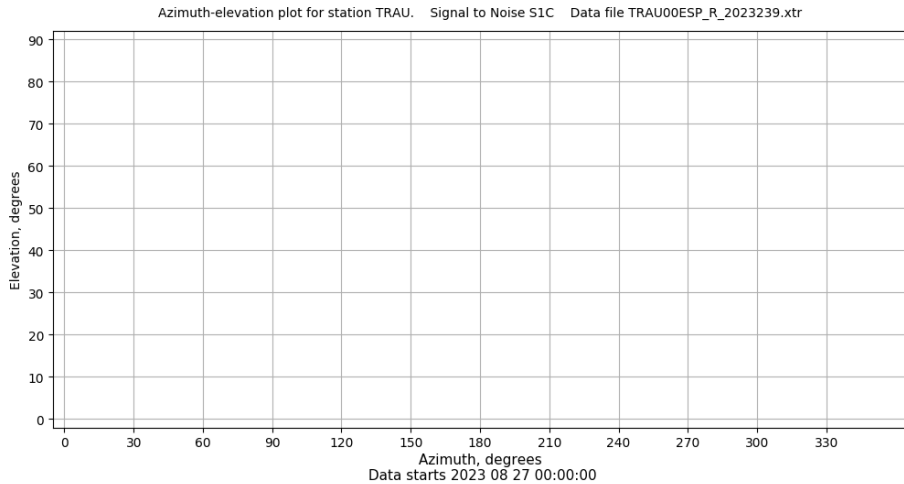
# Control de calidad GNSS GAL diario

Estacion: TRAU  
 Fecha: 2023 08 27  
 Dia del año: 239

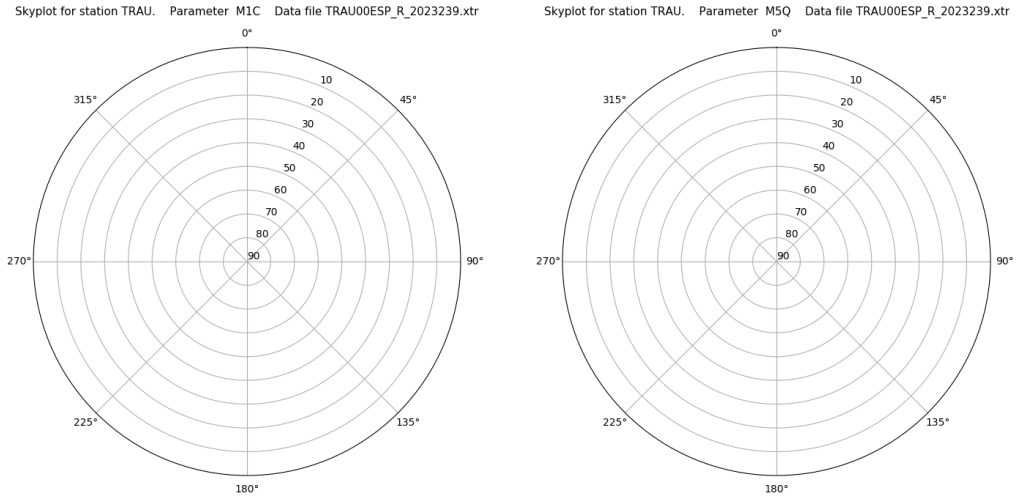
## Señal-Ruido GAL E1 y E5



## Azimut-Elevacion



## Multipath GAL E1 y E5



## Tiempo-Elevacion

