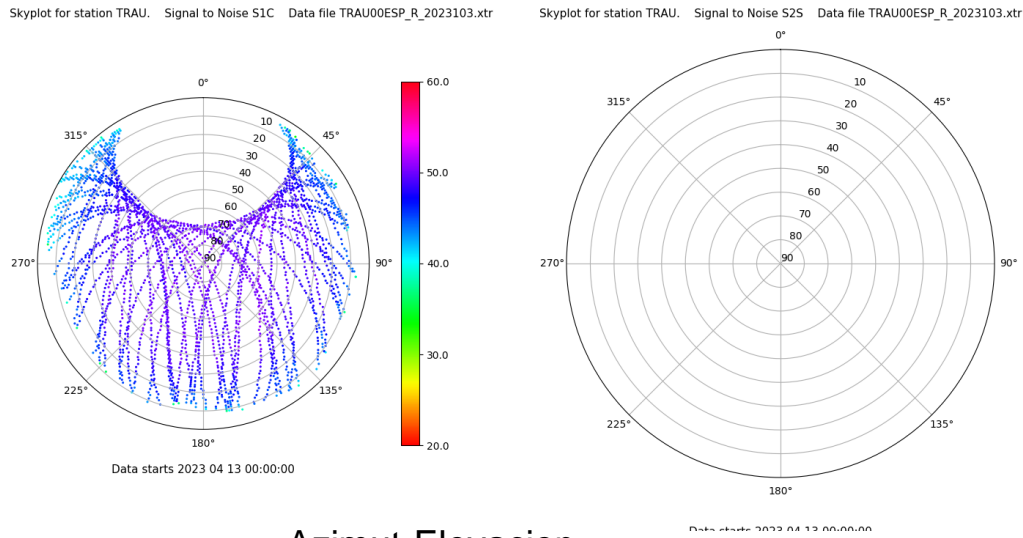


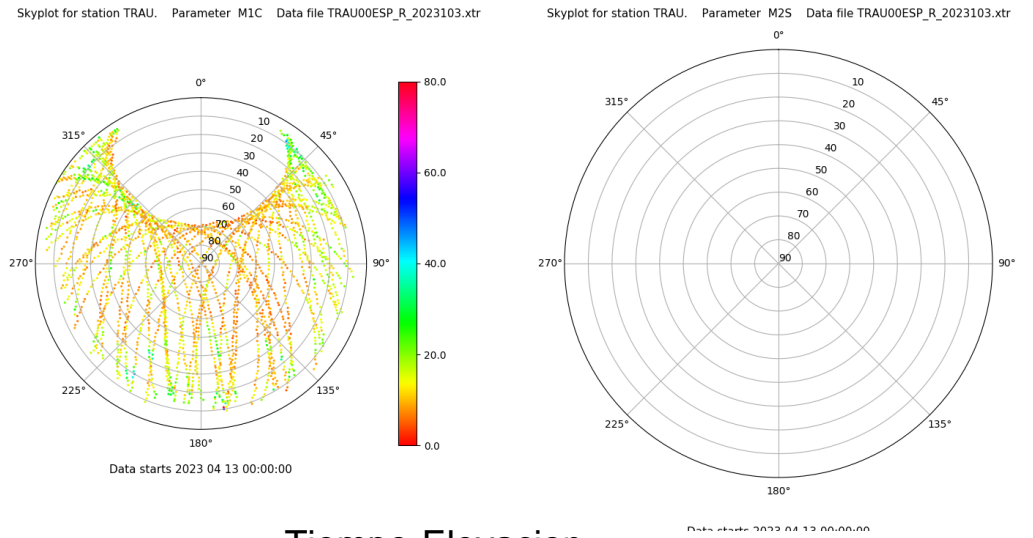
Control de calidad GNSS GPS diario

Estacion: TRAU
 Fecha: 2023 04 13
 Dia del año: 103

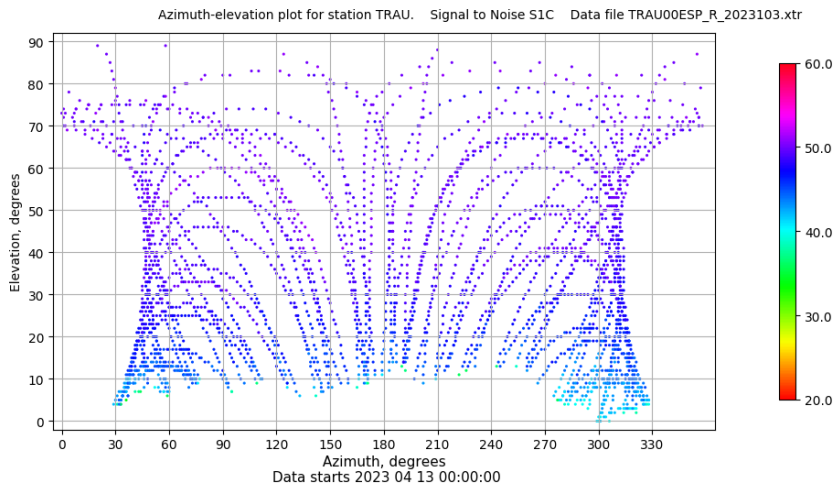
Señal-Ruido GPS L1 y L2



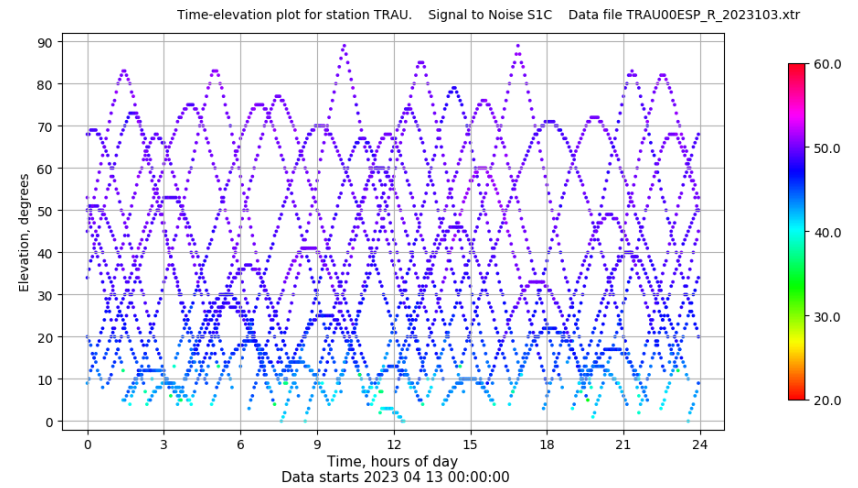
Multipath GPS L1 y L2



Azimut-Elevacion



Tiempo-Elevacion

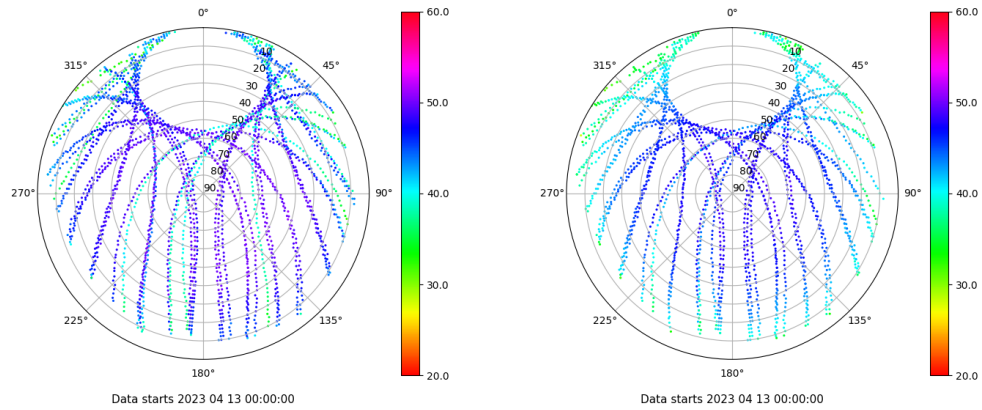


Control de calidad GNSS GLO diario

Estacion: TRAU
 Fecha: 2023 04 13
 Dia del año: 103

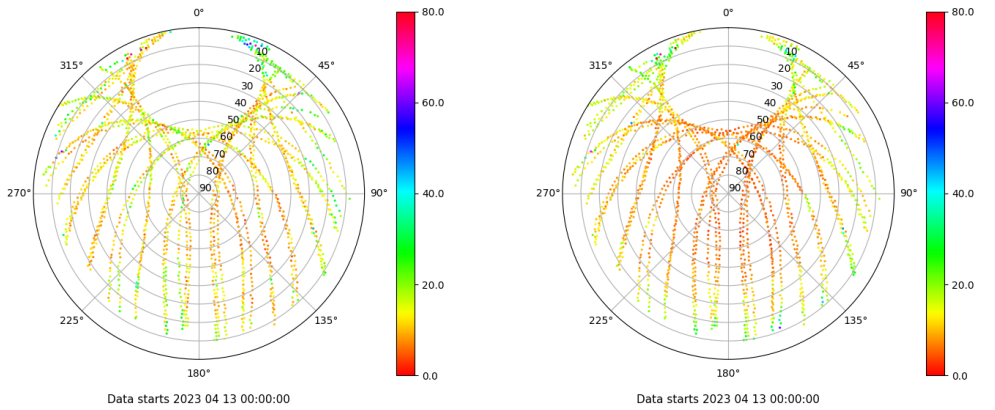
Señal-Ruido GLO L1 y L2

Skyplot for station TRAU. Signal to Noise S1C Data file TRAU00ESP_R_2023103.xtr Skyplot for station TRAU. Signal to Noise S2P Data file TRAU00ESP_R_2023103.xtr



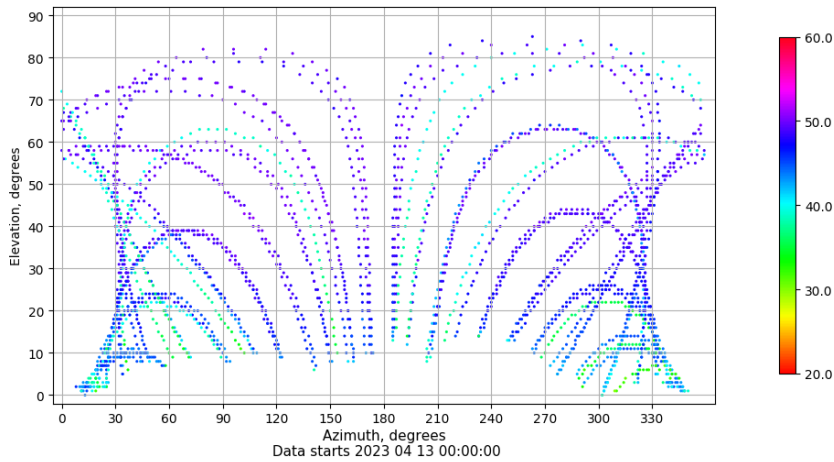
Multipath GLO L1 y L2

Skyplot for station TRAU. Parameter M1C Data file TRAU00ESP_R_2023103.xtr Skyplot for station TRAU. Parameter M2P Data file TRAU00ESP_R_2023103.xtr



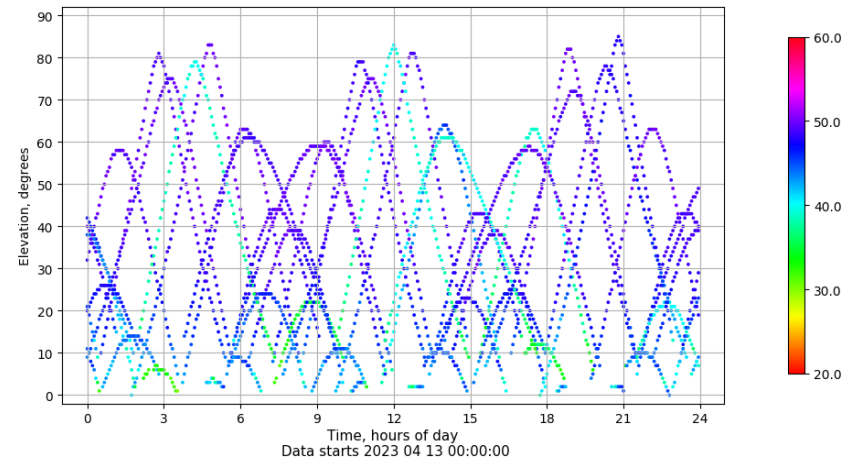
Azimuth-Elevacion

Azimuth-elevation plot for station TRAU. Signal to Noise S1C Data file TRAU00ESP_R_2023103.xtr



Tiempo-Elevacion

Time-elevation plot for station TRAU. Signal to Noise S1C Data file TRAU00ESP_R_2023103.xtr

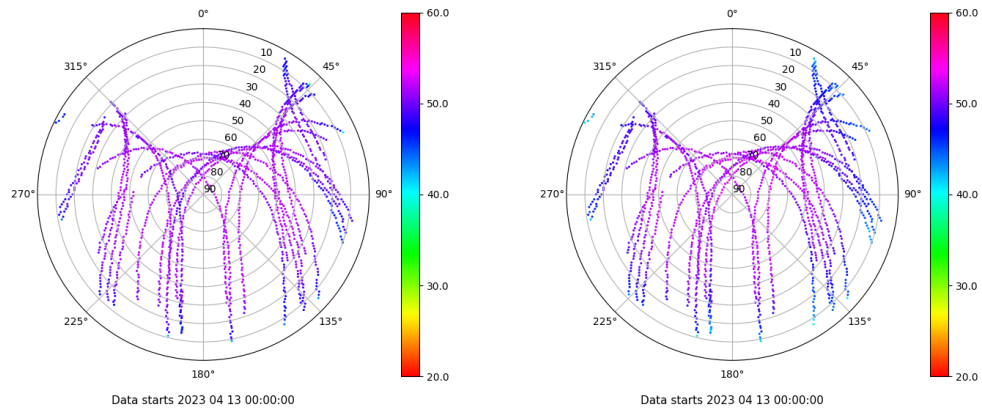


Control de calidad GNSS GAL diario

Estacion: TRAU
 Fecha: 2023 04 13
 Dia del año: 103

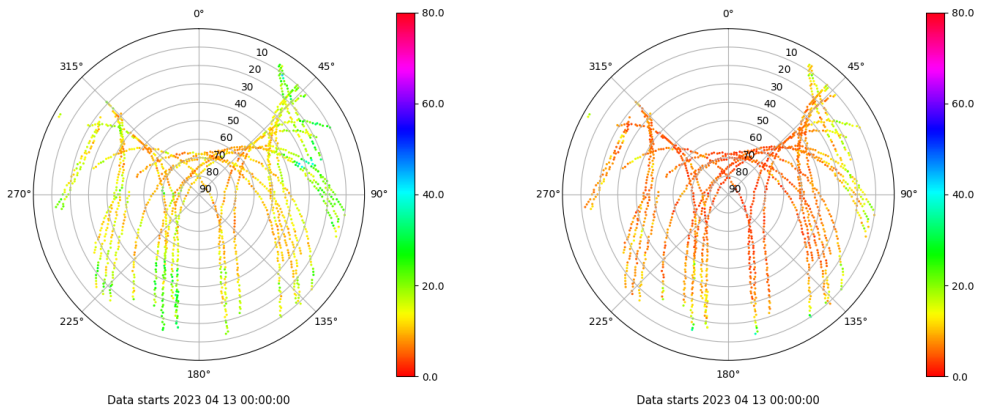
Señal-Ruido GAL E1 y E5

Skyplot for station TRAU. Signal to Noise S1C Data file TRAU00ESP_R_2023103.xtr Skyplot for station TRAU. Signal to Noise S5Q Data file TRAU00ESP_R_2023103.xtr



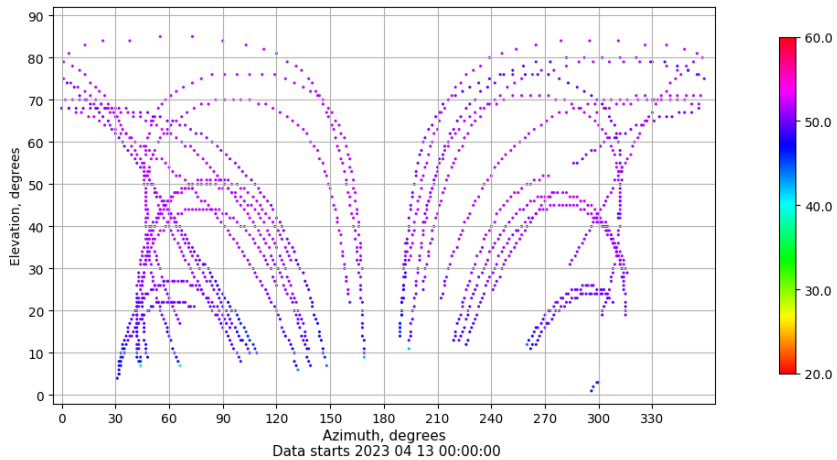
Multipath GAL E1 y E5

Skyplot for station TRAU. Parameter M1C Data file TRAU00ESP_R_2023103.xtr Skyplot for station TRAU. Parameter M5Q Data file TRAU00ESP_R_2023103.xtr



Azimuth-Elevacion

Azimuth-elevation plot for station TRAU. Signal to Noise S1C Data file TRAU00ESP_R_2023103.xtr



Tiempo-Elevacion

Time-elevation plot for station TRAU. Signal to Noise S1C Data file TRAU00ESP_R_2023103.xtr

