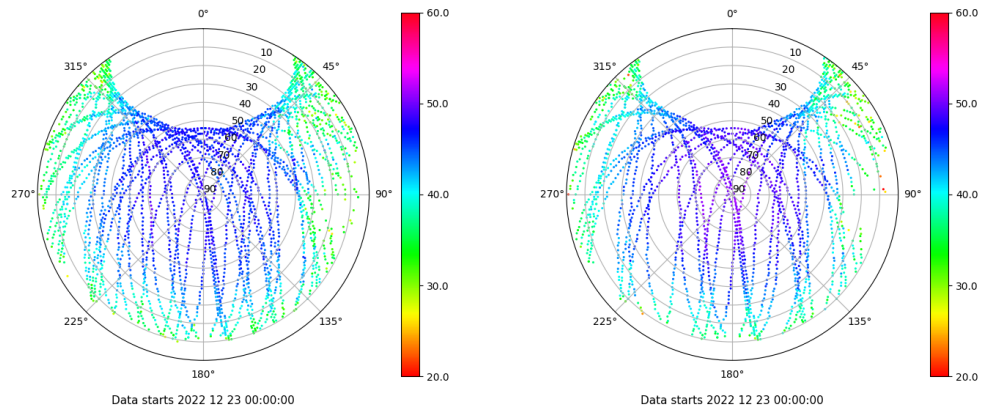


Control de calidad GNSS GPS diario

Estacion: TN02
 Fecha: 2022 12 23
 Dia del año: 357

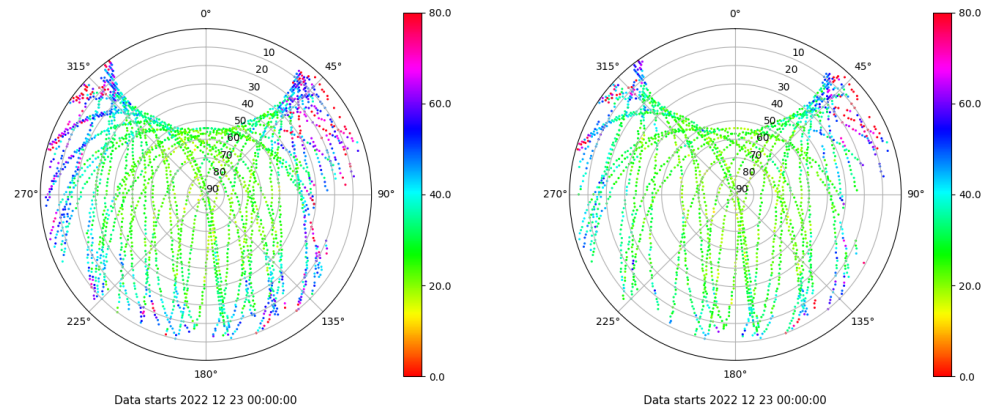
Señal-Ruido GPS L1 y L2

Skyplot for station TN02. Signal to Noise S1C Data file TN0200ESP_R_2022357.xtr Skyplot for station TN02. Signal to Noise S2X Data file TN0200ESP_R_2022357.xtr



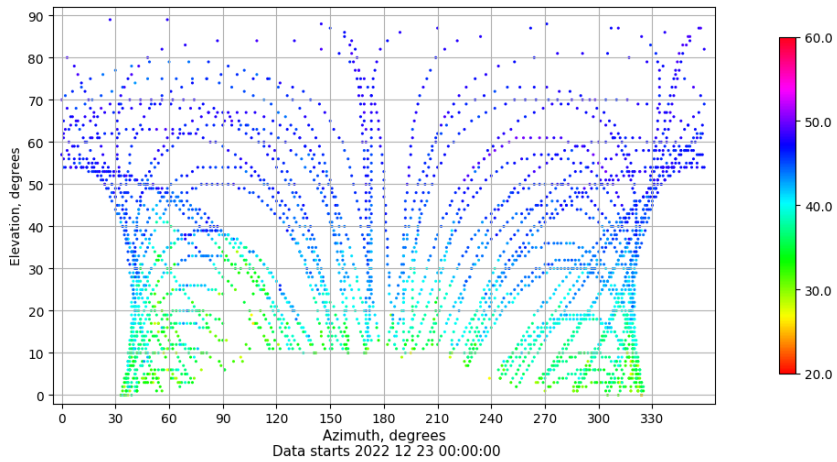
Multipath GPS L1 y L2

Skyplot for station TN02. Parameter M1C Data file TN0200ESP_R_2022357.xtr Skyplot for station TN02. Parameter M2X Data file TN0200ESP_R_2022357.xtr



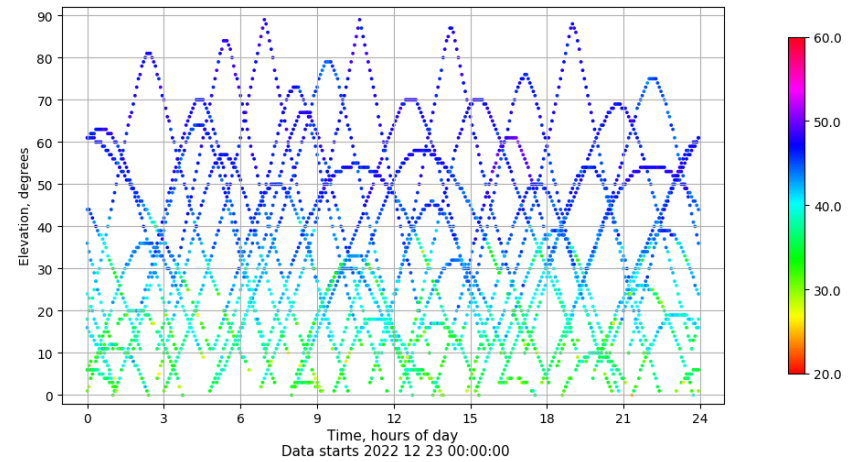
Azimut-Elevacion

Azimuth-elevation plot for station TN02. Signal to Noise S1C Data file TN0200ESP_R_2022357.xtr



Tiempo-Elevacion

Time-elevation plot for station TN02. Signal to Noise S1C Data file TN0200ESP_R_2022357.xtr

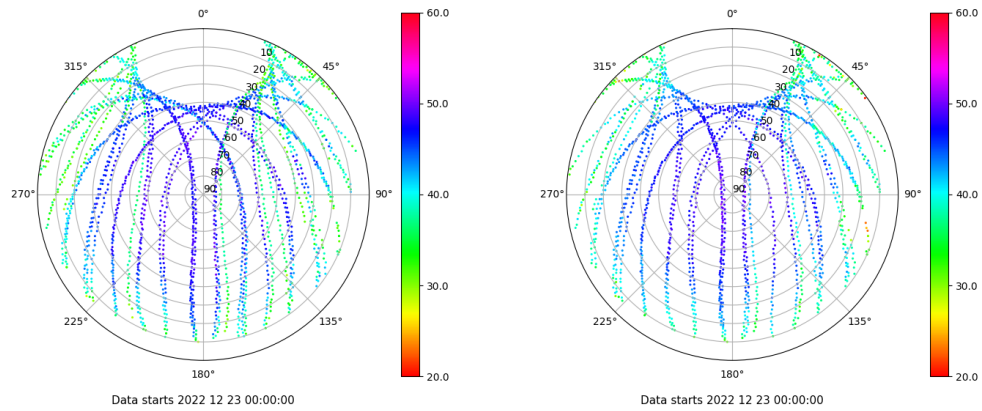


Control de calidad GNSS GLO diario

Estacion: TN02
 Fecha: 2022 12 23
 Dia del año: 357

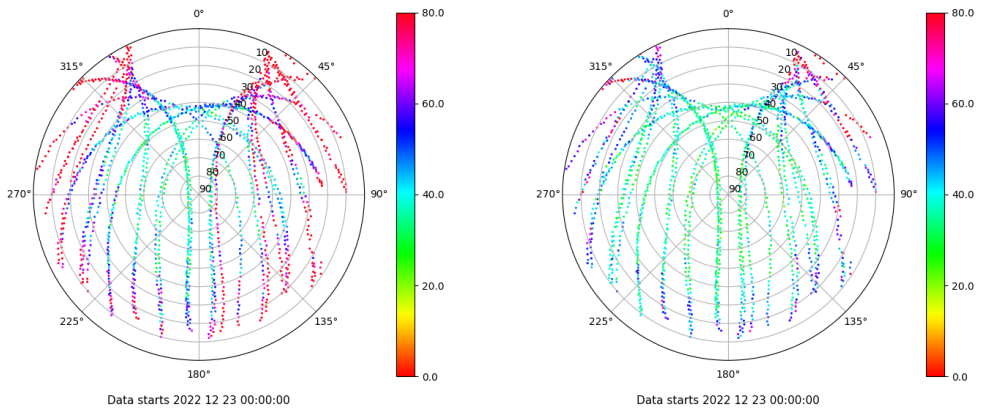
Señal-Ruido GLO L1 y L2

Skyplot for station TN02. Signal to Noise S1C Data file TN0200ESP_R_2022357.xtr Skyplot for station TN02. Signal to Noise S2C Data file TN0200ESP_R_2022357.xtr



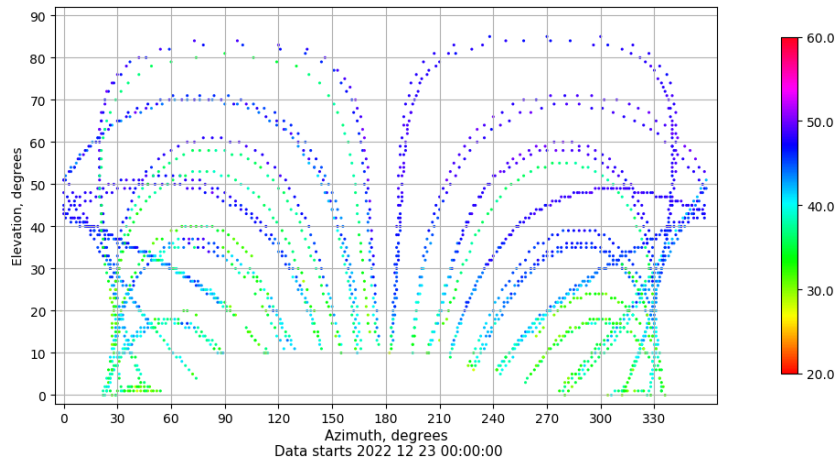
Multipath GLO L1 y L2

Skyplot for station TN02. Parameter M1C Data file TN0200ESP_R_2022357.xtr Skyplot for station TN02. Parameter M2C Data file TN0200ESP_R_2022357.xtr



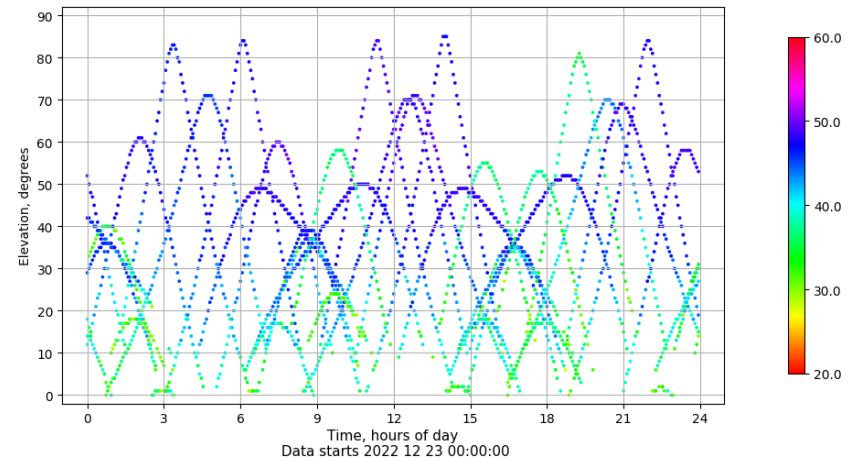
Azimuth-Elevacion

Azimuth-elevation plot for station TN02. Signal to Noise S1C Data file TN0200ESP_R_2022357.xtr



Tiempo-Elevacion

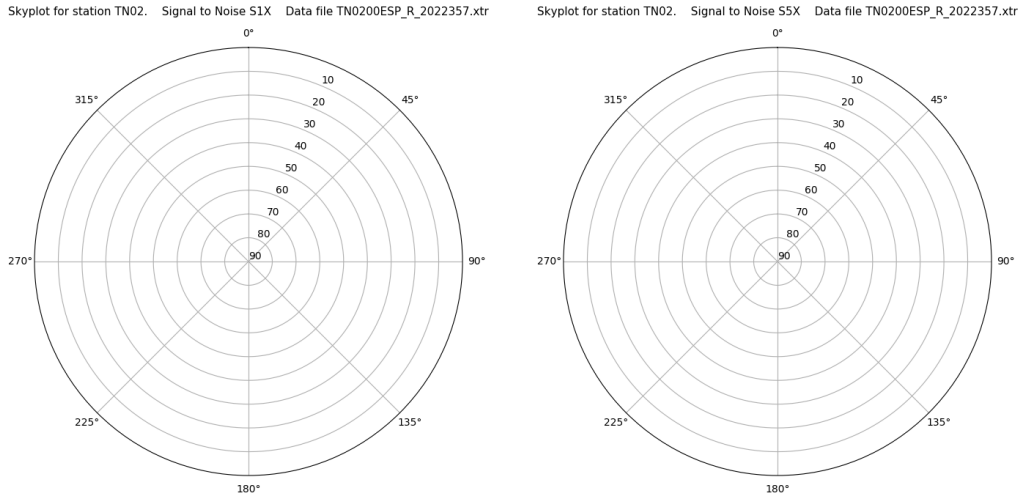
Time-elevation plot for station TN02. Signal to Noise S1C Data file TN0200ESP_R_2022357.xtr



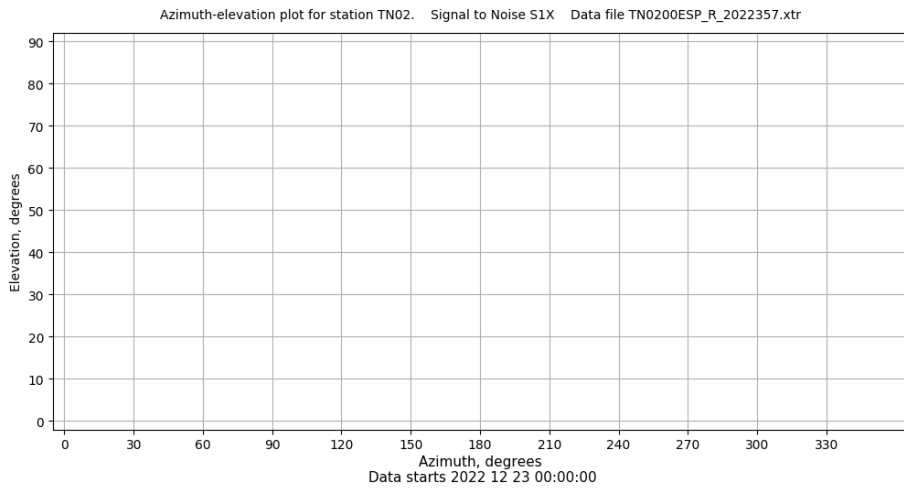
Control de calidad GNSS GAL diario

Estacion: TN02
 Fecha: 2022 12 23
 Dia del año: 357

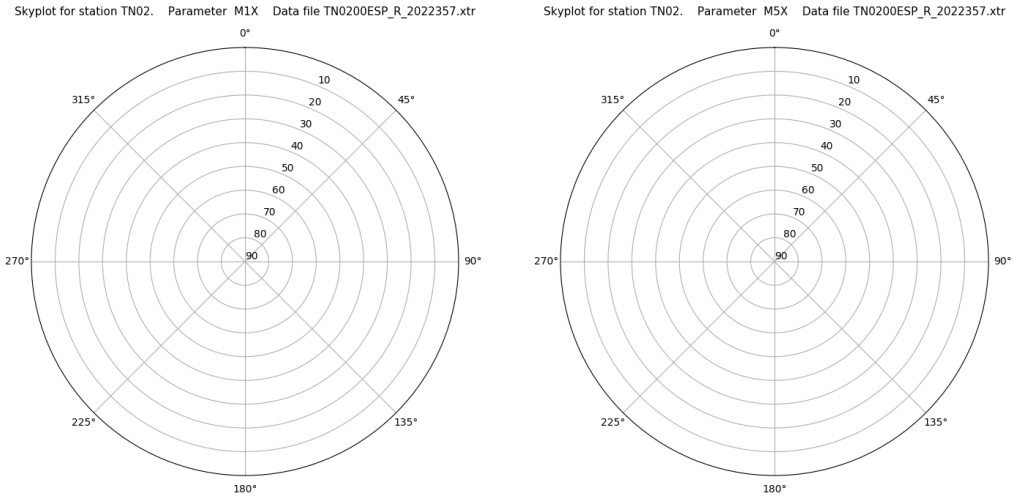
Señal-Ruido GAL E1 y E5



Azimut-Elevacion



Multipath GAL E1 y E5



Tiempo-Elevacion

