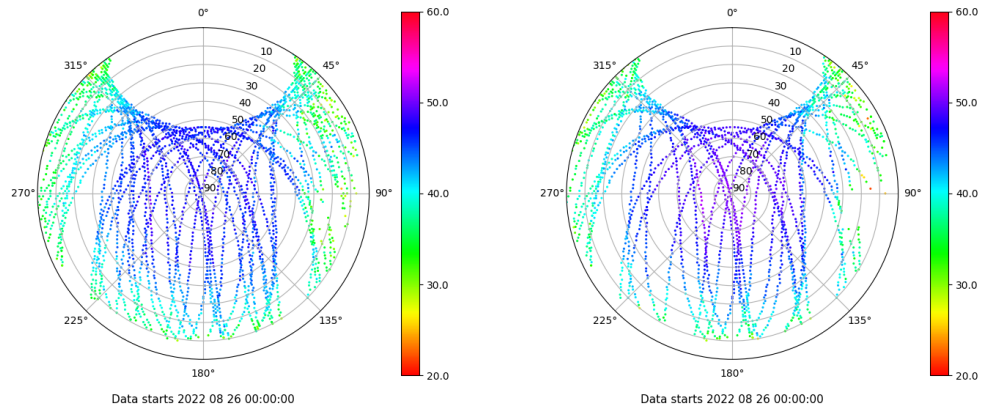


Control de calidad GNSS GPS diario

Estacion: TN02
 Fecha: 2022 08 26
 Dia del año: 238

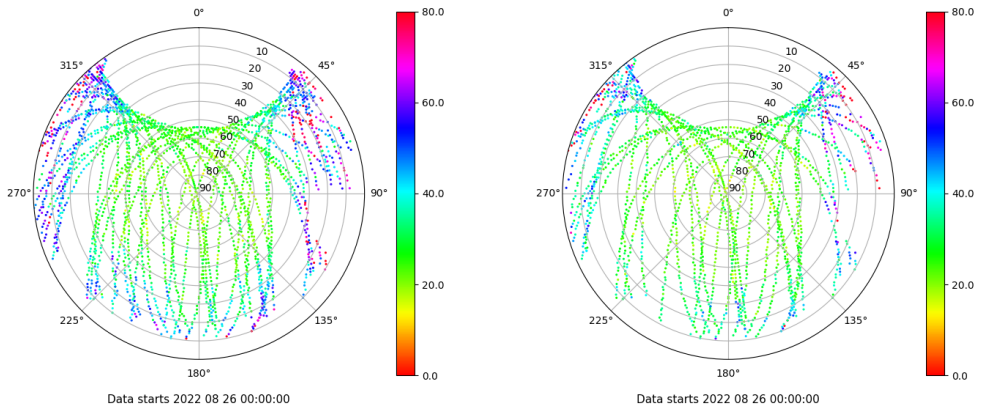
Señal-Ruido GPS L1 y L2

Skyplot for station TN02. Signal to Noise S1C Data file TN0200ESP_R_2022238.xtr Skyplot for station TN02. Signal to Noise S2X Data file TN0200ESP_R_2022238.xtr



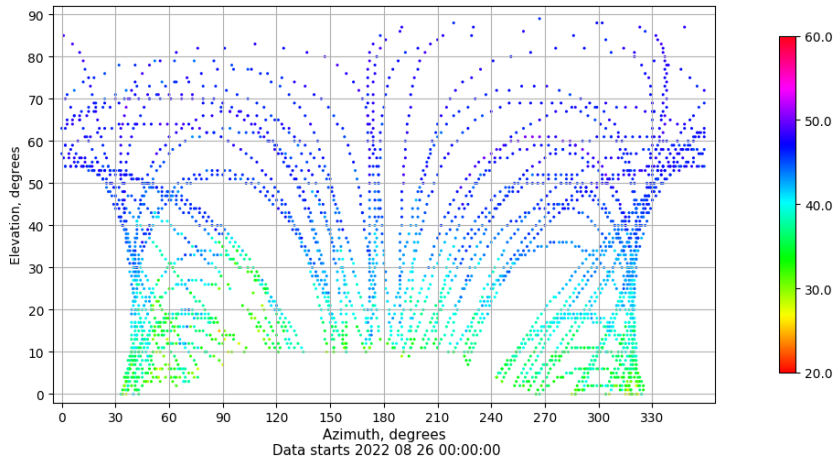
Multipath GPS L1 y L2

Skyplot for station TN02. Parameter M1C Data file TN0200ESP_R_2022238.xtr Skyplot for station TN02. Parameter M2X Data file TN0200ESP_R_2022238.xtr



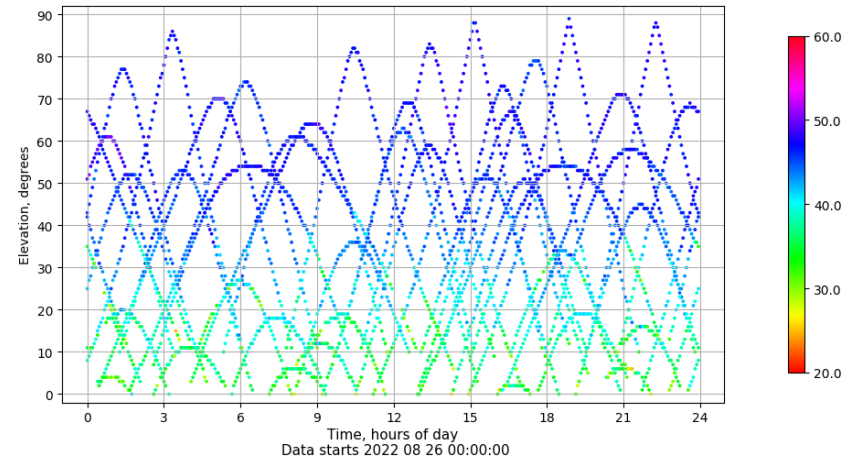
Azimuth-Elevacion

Azimuth-elevation plot for station TN02. Signal to Noise S1C Data file TN0200ESP_R_2022238.xtr



Tiempo-Elevacion

Time-elevation plot for station TN02. Signal to Noise S1C Data file TN0200ESP_R_2022238.xtr

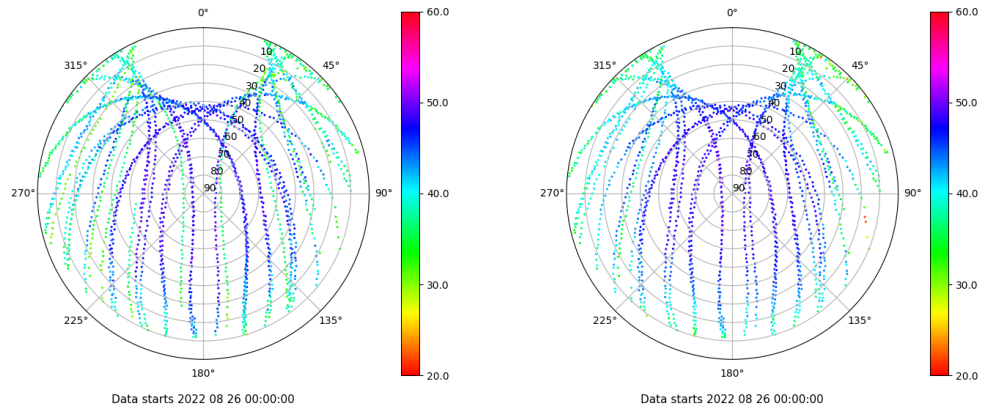


Control de calidad GNSS GLO diario

Estacion: TN02
 Fecha: 2022 08 26
 Dia del año: 238

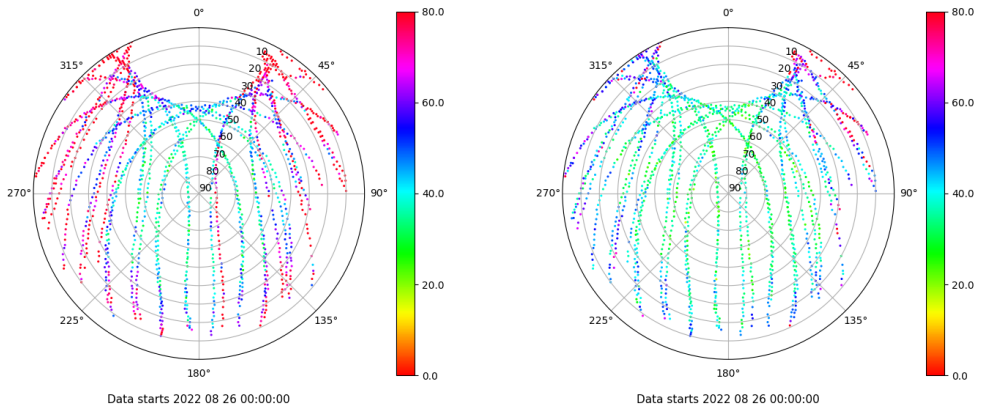
Señal-Ruido GLO L1 y L2

Skyplot for station TN02. Signal to Noise S1C Data file TN0200ESP_R_2022238.xtr Skyplot for station TN02. Signal to Noise S2C Data file TN0200ESP_R_2022238.xtr



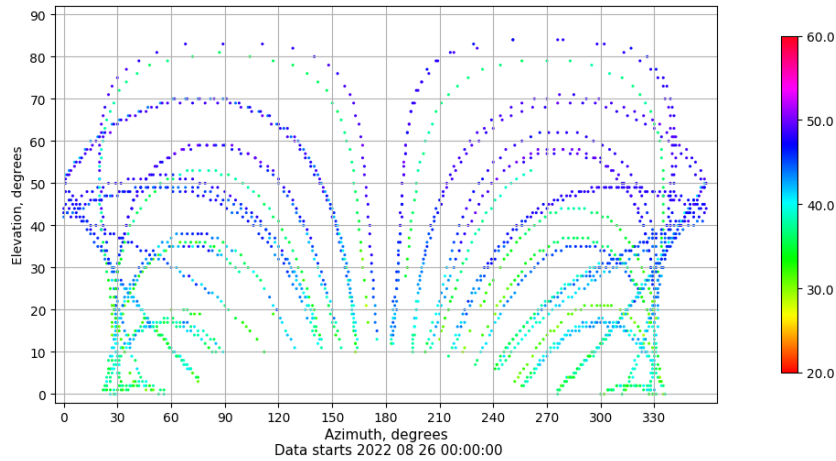
Multipath GLO L1 y L2

Skyplot for station TN02. Parameter M1C Data file TN0200ESP_R_2022238.xtr Skyplot for station TN02. Parameter M2C Data file TN0200ESP_R_2022238.xtr



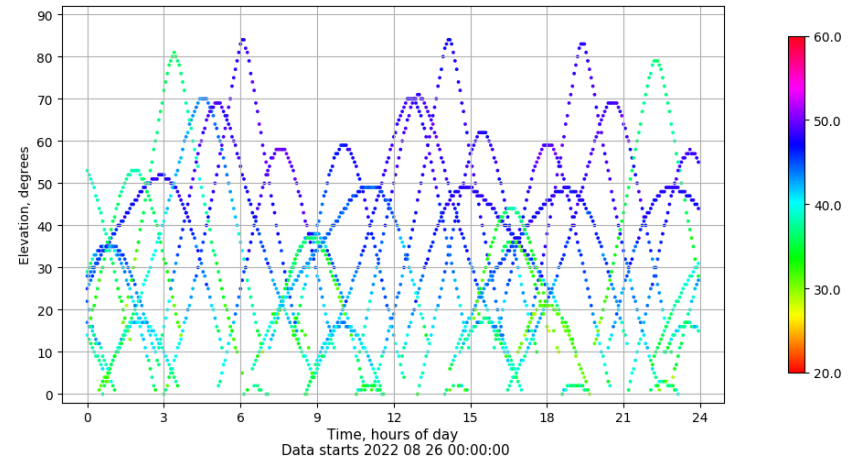
Azimuth-Elevacion

Azimuth-elevation plot for station TN02. Signal to Noise S1C Data file TN0200ESP_R_2022238.xtr



Tiempo-Elevacion

Time-elevation plot for station TN02. Signal to Noise S1C Data file TN0200ESP_R_2022238.xtr

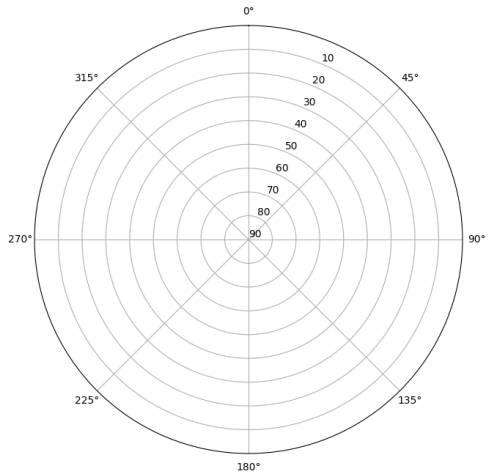


Control de calidad GNSS GAL diario

Estacion: TN02
 Fecha: 2022 08 26
 Dia del año: 238

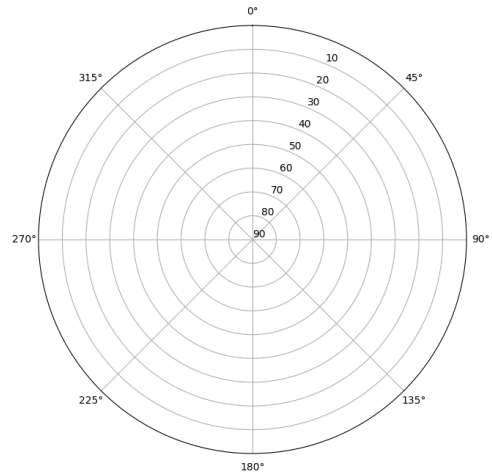
Señal-Ruido GAL E1 y E5

Skyplot for station TN02. Signal to Noise S1X Data file TN0200ESP_R_2022238.xtr



Data starts 2022 08 26 00:00:00

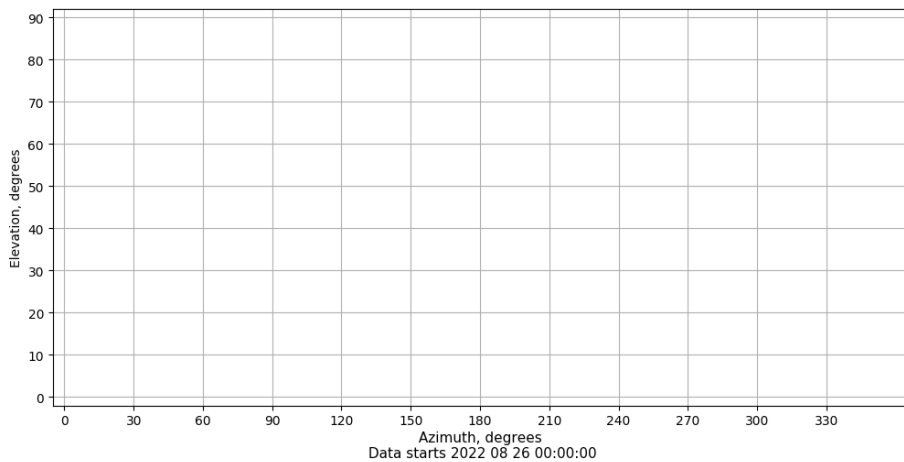
Skyplot for station TN02. Signal to Noise S5X Data file TN0200ESP_R_2022238.xtr



Data starts 2022 08 26 00:00:00

Azimut-Elevacion

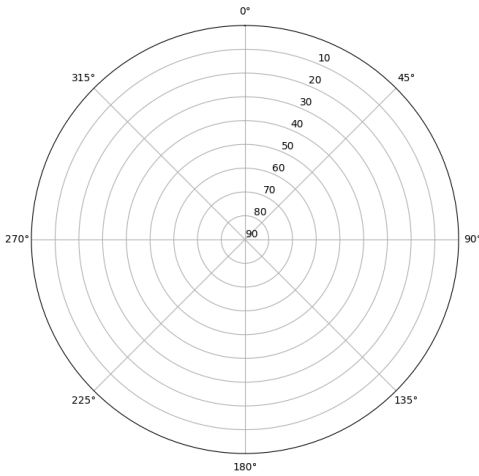
Azimuth-elevation plot for station TN02. Signal to Noise S1X Data file TN0200ESP_R_2022238.xtr



Data starts 2022 08 26 00:00:00

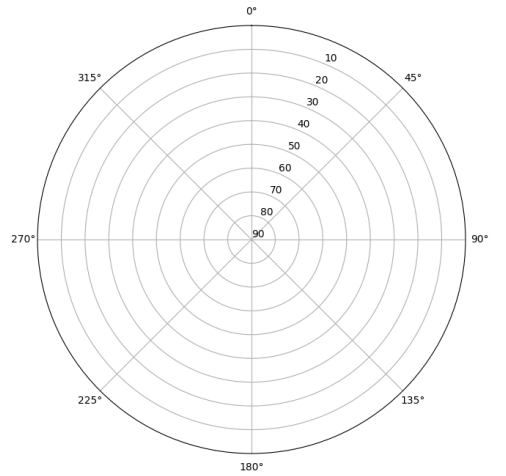
Multipath GAL E1 y E5

Skyplot for station TN02. Parameter M1X Data file TN0200ESP_R_2022238.xtr



Data starts 2022 08 26 00:00:00

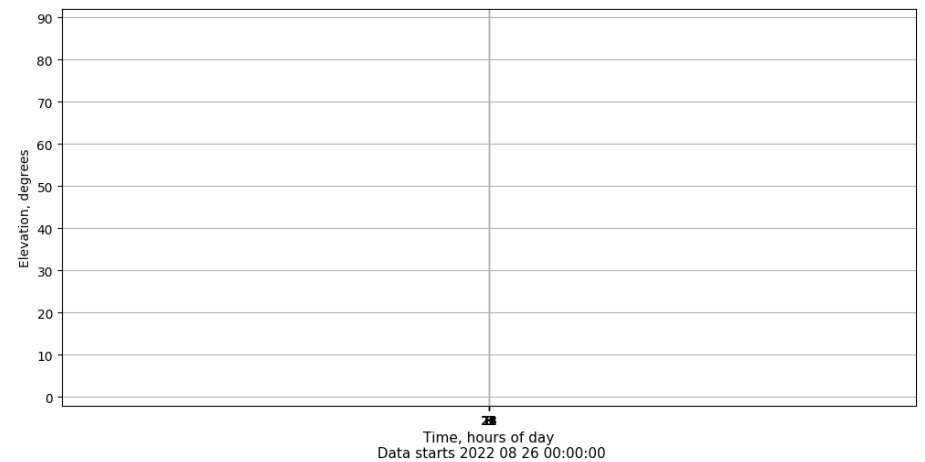
Skyplot for station TN02. Parameter M5X Data file TN0200ESP_R_2022238.xtr



Data starts 2022 08 26 00:00:00

Tiempo-Elevacion

Time-elevation plot for station TN02. Signal to Noise S1X Data file TN0200ESP_R_2022238.xtr



Data starts 2022 08 26 00:00:00