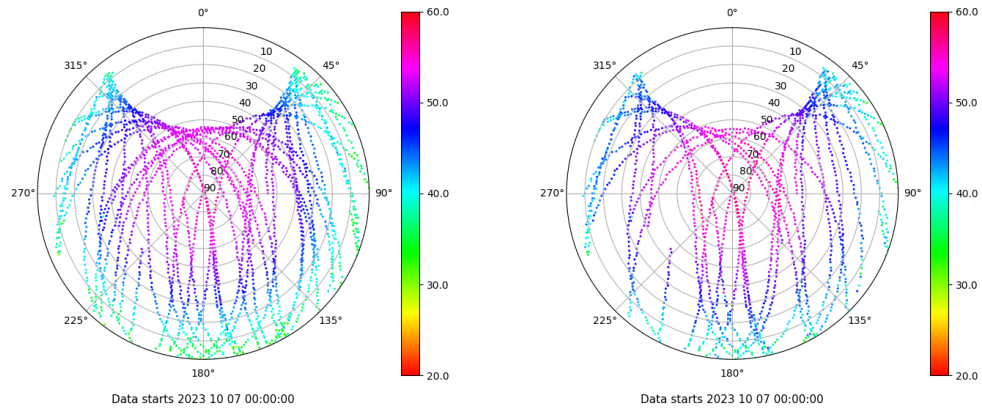


# Control de calidad GNSS GPS diario

Estacion: TN01  
 Fecha: 2023 10 07  
 Dia del año: 280

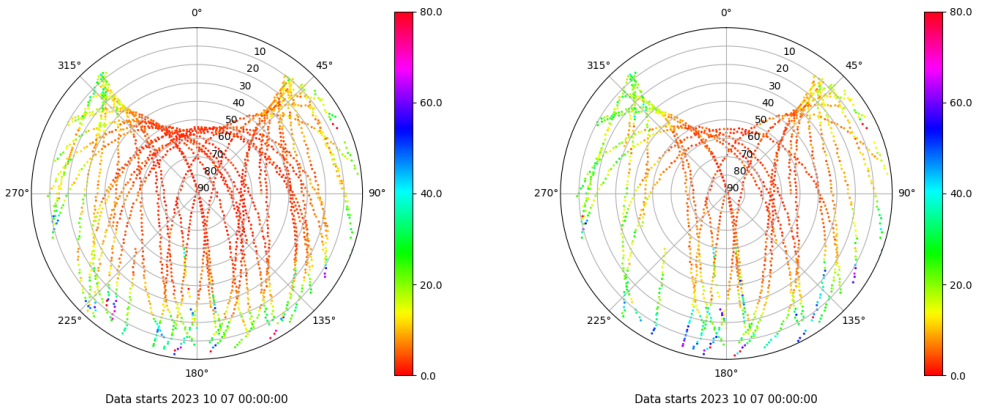
## Señal-Ruido GPS L1 y L2

Skyplot for station TN01. Signal to Noise S1C Data file TN0100ESP\_R\_2023280.xtr Skyplot for station TN01. Signal to Noise S2S Data file TN0100ESP\_R\_2023280.xtr



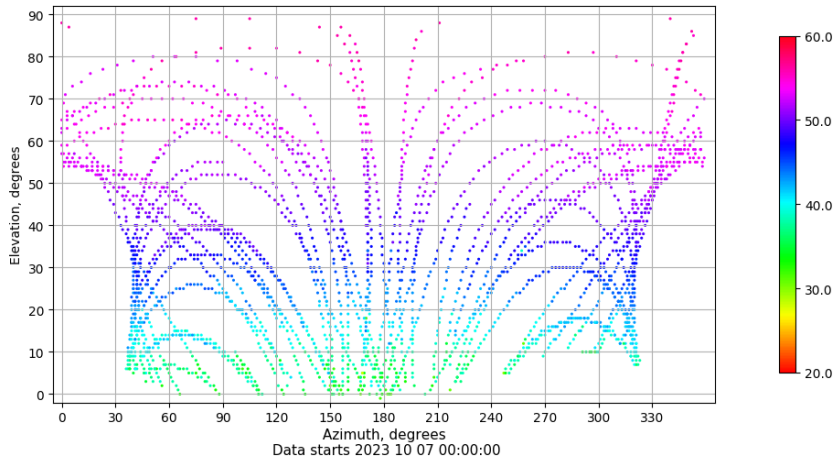
## Multipath GPS L1 y L2

Skyplot for station TN01. Parameter M1C Data file TN0100ESP\_R\_2023280.xtr Skyplot for station TN01. Parameter M2S Data file TN0100ESP\_R\_2023280.xtr



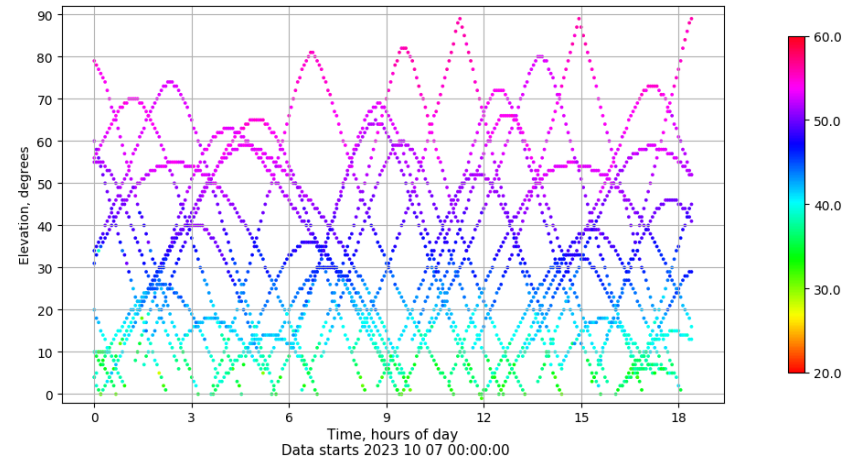
## Azimuth-Elevacion

Azimuth-elevation plot for station TN01. Signal to Noise S1C Data file TN0100ESP\_R\_2023280.xtr



## Tiempo-Elevacion

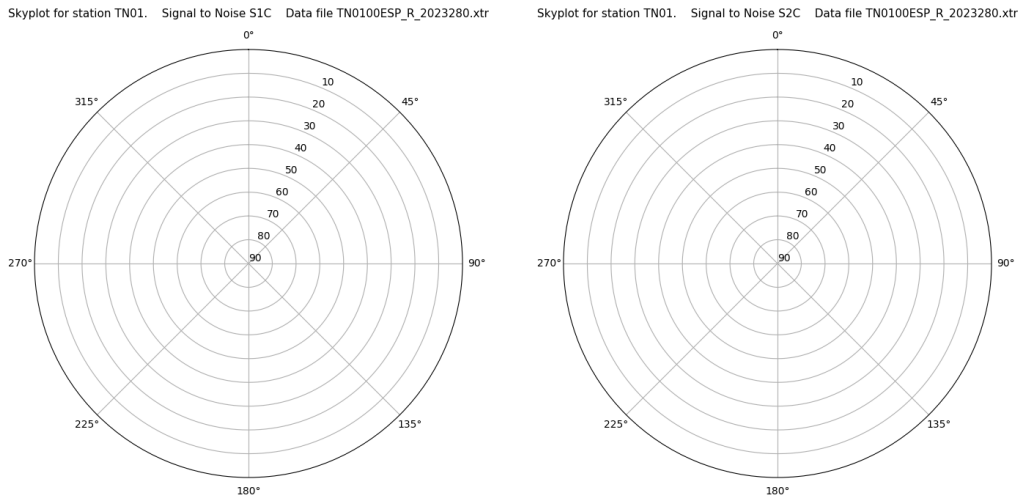
Time-elevation plot for station TN01. Signal to Noise S1C Data file TN0100ESP\_R\_2023280.xtr



# Control de calidad GNSS GLO diario

Estacion: TN01  
 Fecha: 2023 10 07  
 Dia del año: 280

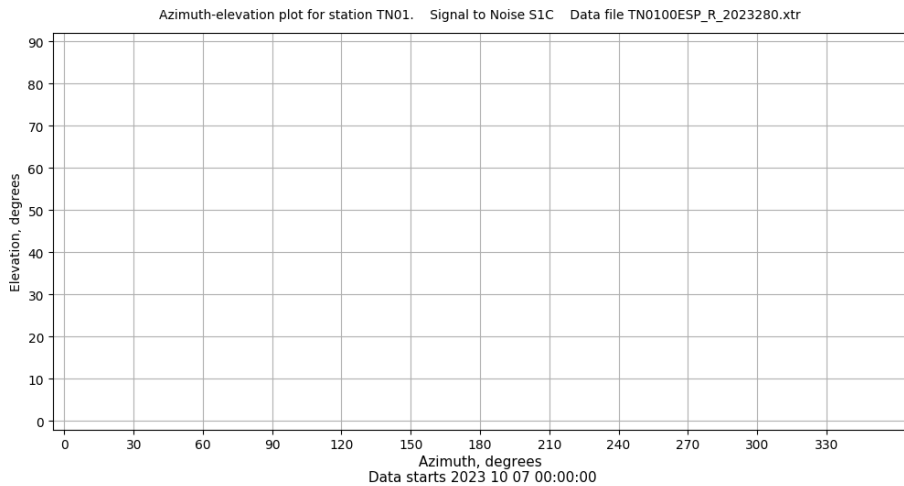
## Señal-Ruido GLO L1 y L2



Data starts 2023 10 07 00:00:00

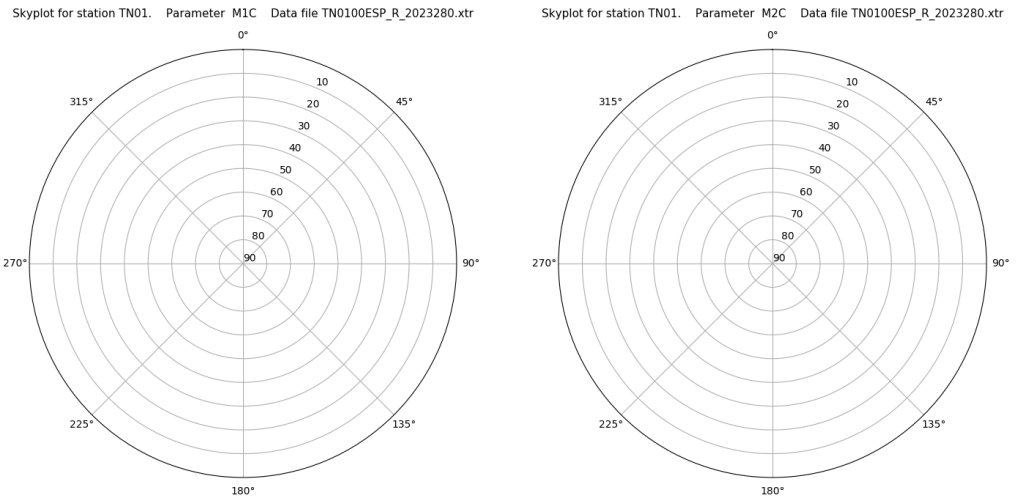
Data starts 2023 10 07 00:00:00

## Azimut-Elevacion



Data starts 2023 10 07 00:00:00

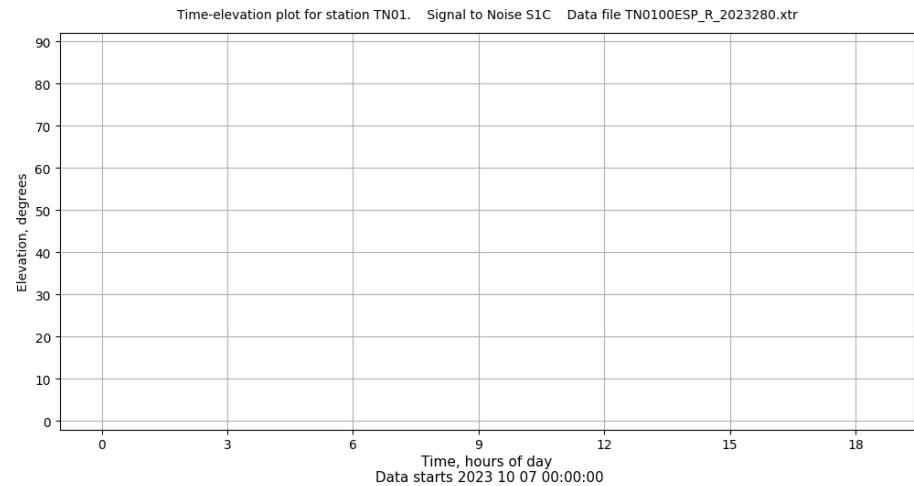
## Multipath GLO L1 y L2



Data starts 2023 10 07 00:00:00

Data starts 2023 10 07 00:00:00

## Tiempo-Elevacion

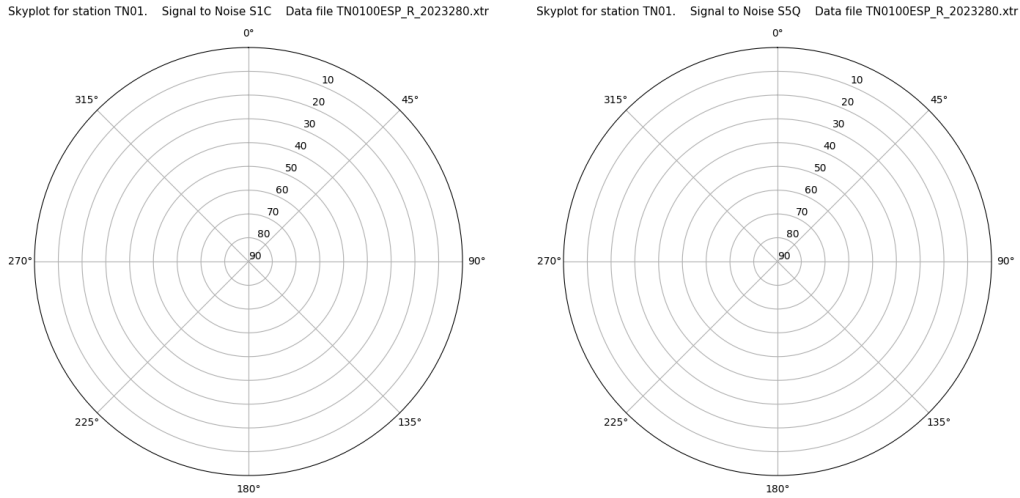


Data starts 2023 10 07 00:00:00

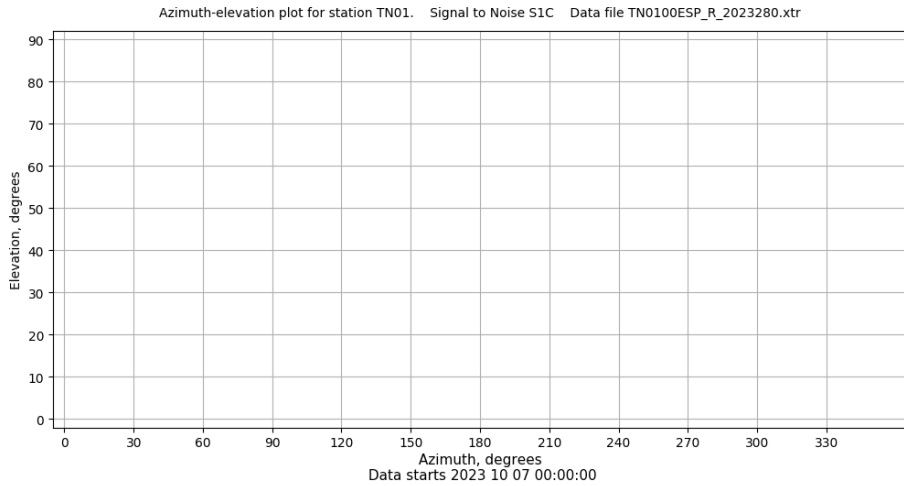
# Control de calidad GNSS GAL diario

Estacion: TN01  
 Fecha: 2023 10 07  
 Dia del año: 280

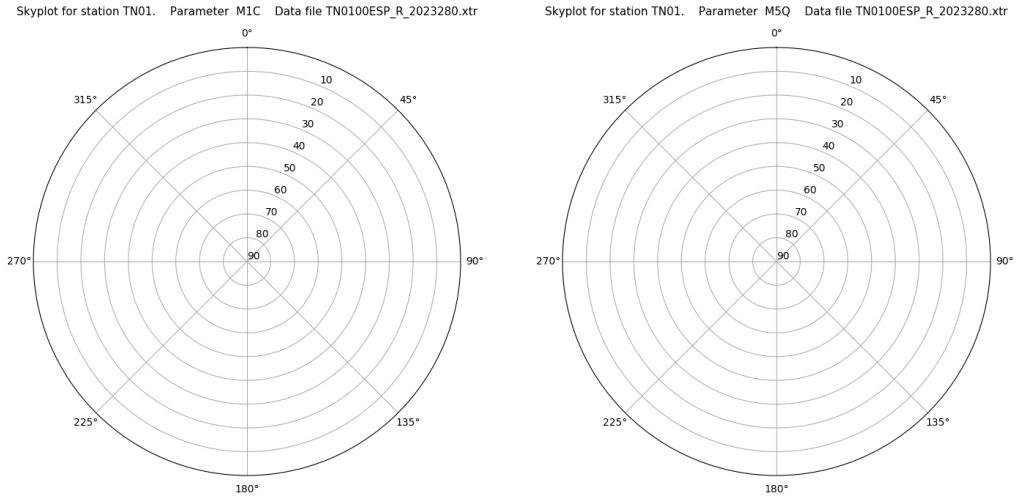
## Señal-Ruido GAL E1 y E5



## Azimut-Elevacion



## Multipath GAL E1 y E5



## Tiempo-Elevacion

