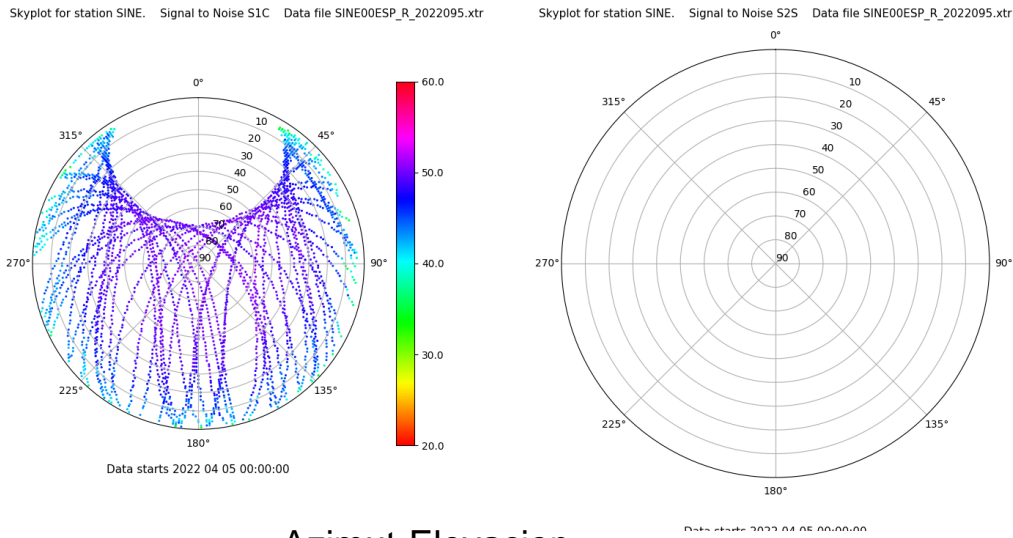


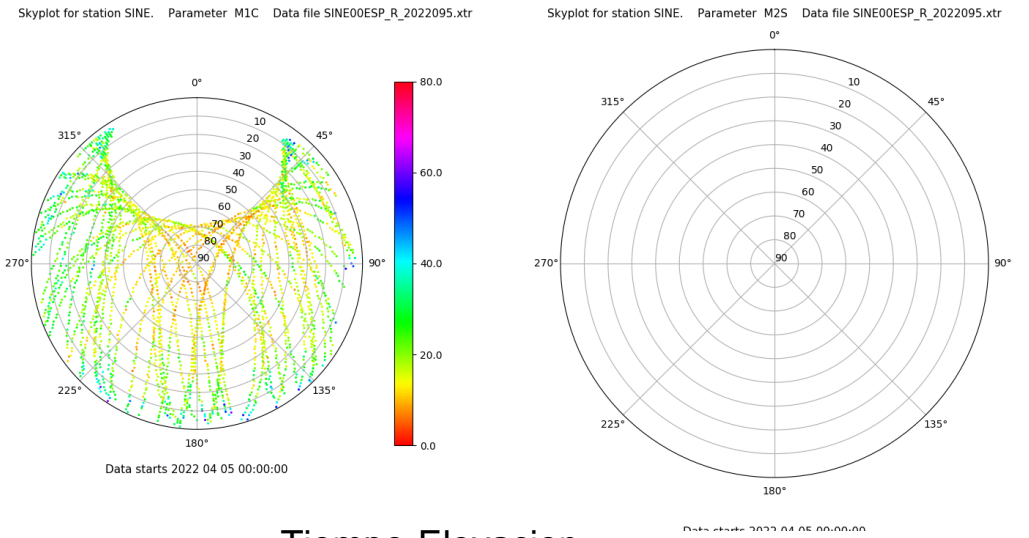
Control de calidad GNSS GPS diario

Estacion: SINE
 Fecha: 2022 04 05
 Dia del año: 095

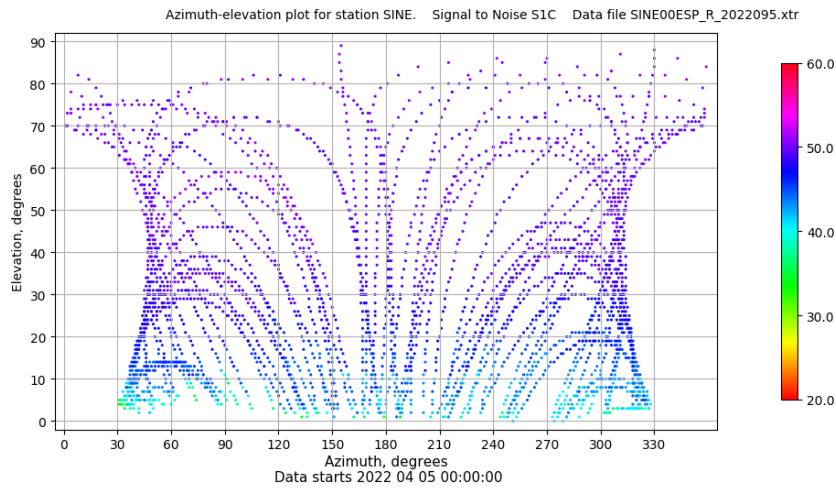
Señal-Ruido GPS L1 y L2



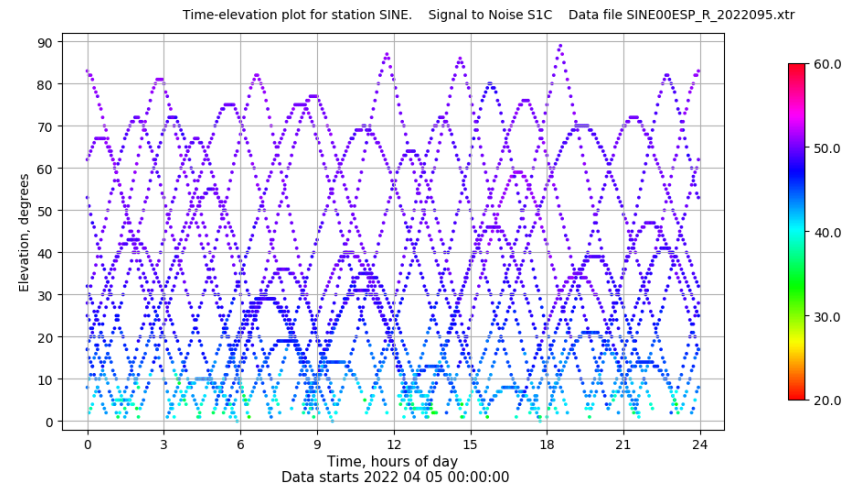
Multipath GPS L1 y L2



Azimut-Elevacion



Tiempo-Elevacion

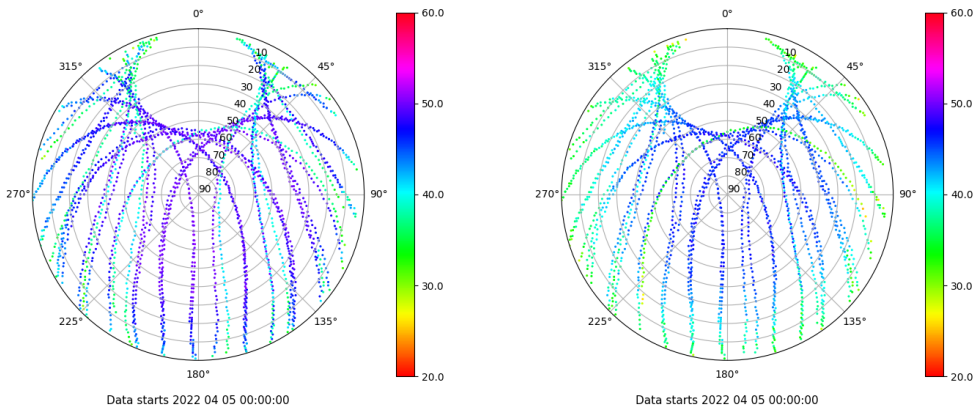


Control de calidad GNSS GLO diario

Estacion: SINE
 Fecha: 2022 04 05
 Dia del año: 095

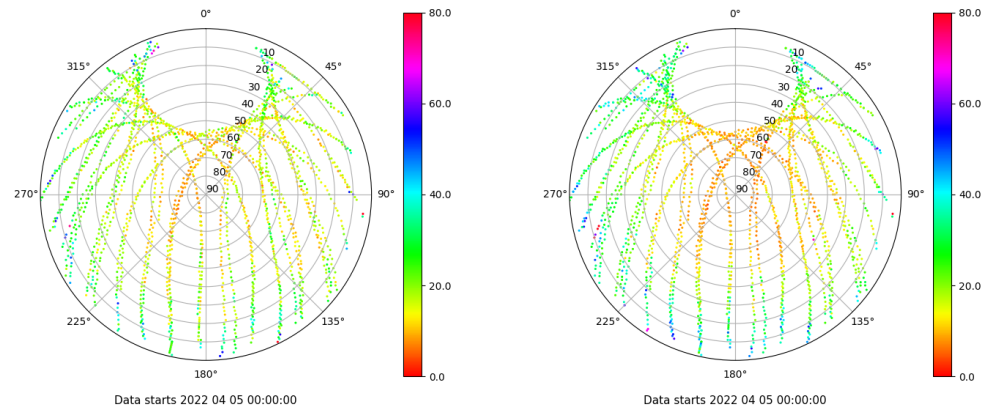
Señal-Ruido GLO L1 y L2

Skyplot for station SINE. Signal to Noise S1C Data file SINE00ESP_R_2022095.xtr Skyplot for station SINE. Signal to Noise S2P Data file SINE00ESP_R_2022095.xtr



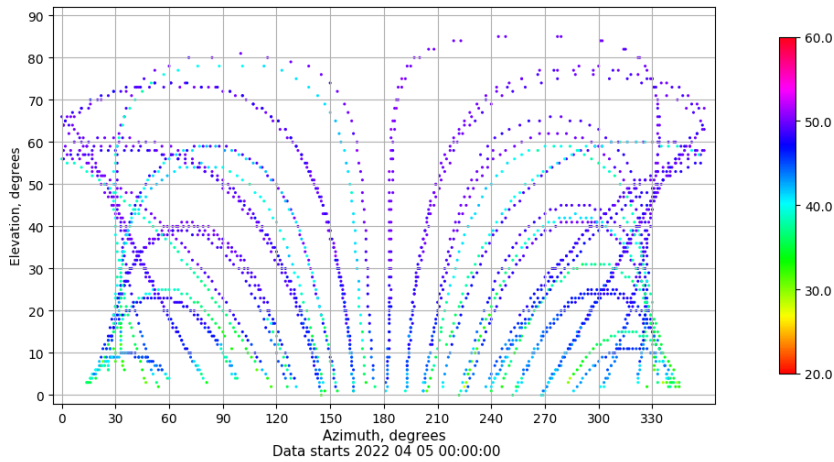
Multipath GLO L1 y L2

Skyplot for station SINE. Parameter M1C Data file SINE00ESP_R_2022095.xtr Skyplot for station SINE. Parameter M2P Data file SINE00ESP_R_2022095.xtr



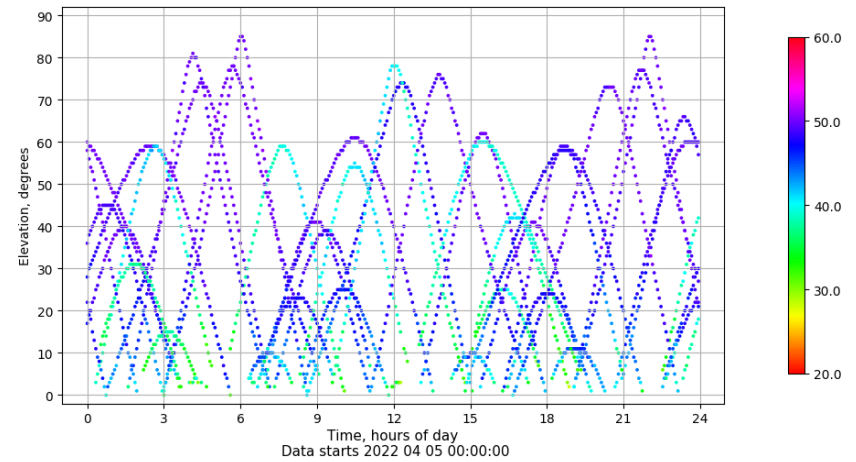
Azimuth-Elevacion

Azimuth-elevation plot for station SINE. Signal to Noise S1C Data file SINE00ESP_R_2022095.xtr



Tiempo-Elevacion

Time-elevation plot for station SINE. Signal to Noise S1C Data file SINE00ESP_R_2022095.xtr

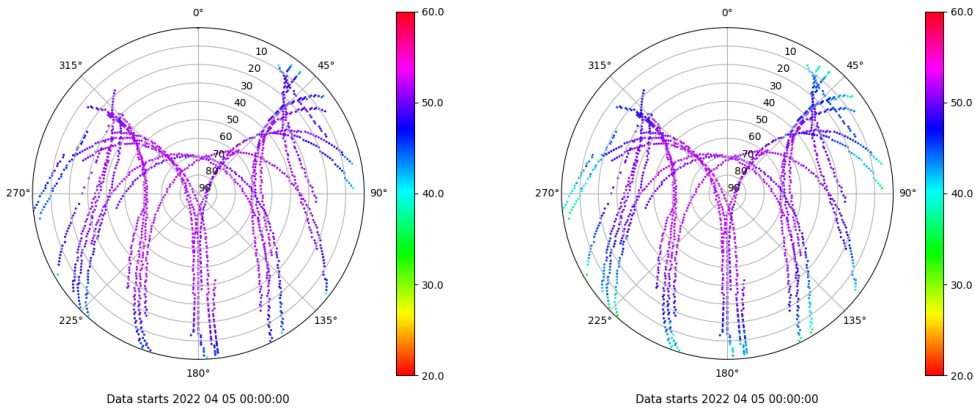


Control de calidad GNSS GAL diario

Estacion: SINE
 Fecha: 2022 04 05
 Dia del año: 095

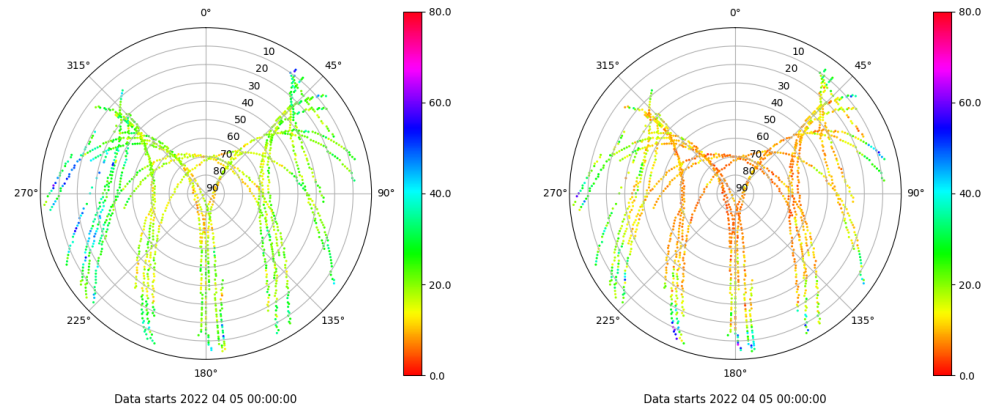
Señal-Ruido GAL E1 y E5

Skyplot for station SINE. Signal to Noise S1C Data file SINE00ESP_R_2022095.xtr Skyplot for station SINE. Signal to Noise S5Q Data file SINE00ESP_R_2022095.xtr



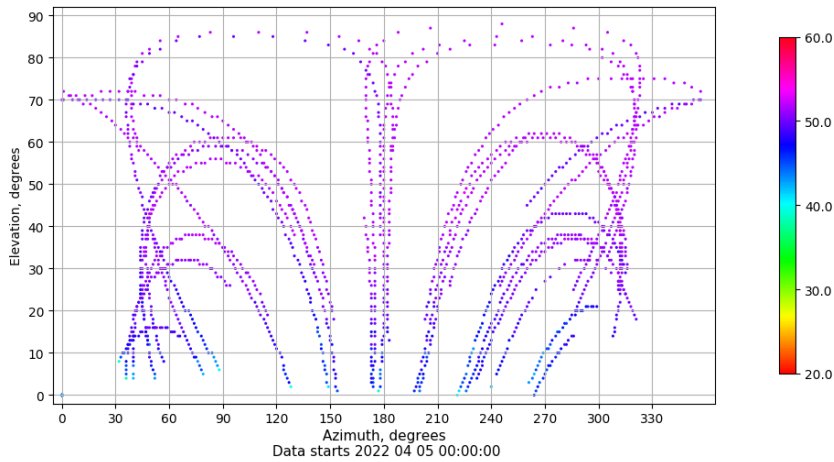
Multipath GAL E1 y E5

Skyplot for station SINE. Parameter M1C Data file SINE00ESP_R_2022095.xtr Skyplot for station SINE. Parameter M5Q Data file SINE00ESP_R_2022095.xtr



Azimuth-Elevacion

Azimuth-elevation plot for station SINE. Signal to Noise S1C Data file SINE00ESP_R_2022095.xtr



Tiempo-Elevacion

Time-elevation plot for station SINE. Signal to Noise S1C Data file SINE00ESP_R_2022095.xtr

