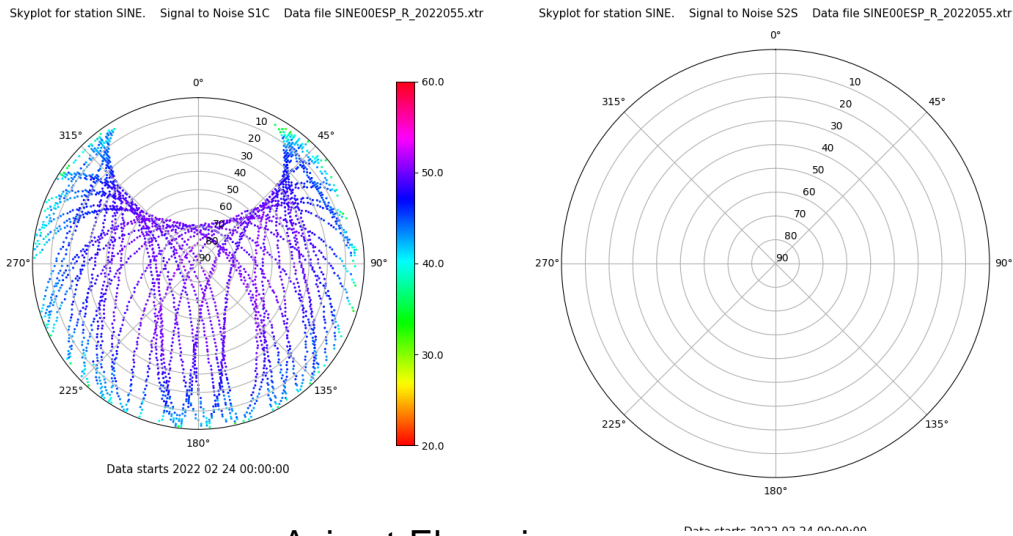


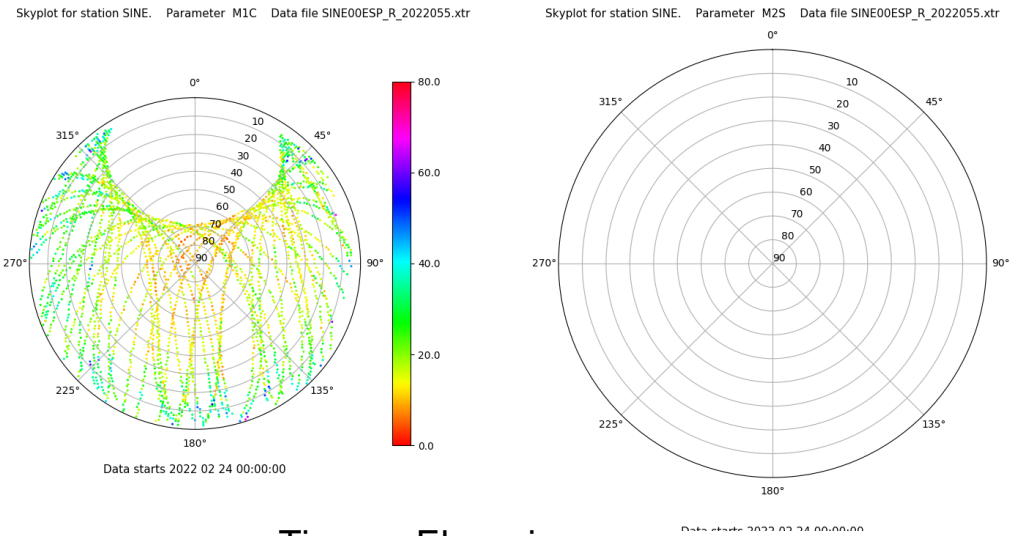
Control de calidad GNSS GPS diario

Estacion: SINE
 Fecha: 2022 02 24
 Dia del año: 055

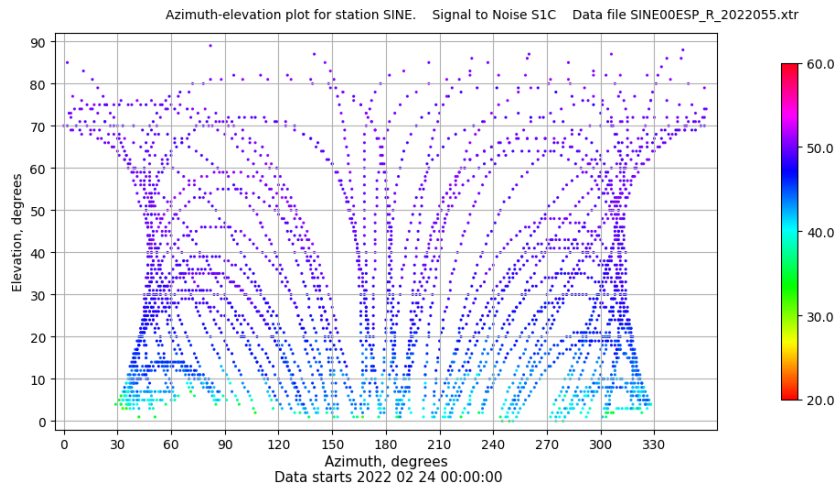
Señal-Ruido GPS L1 y L2



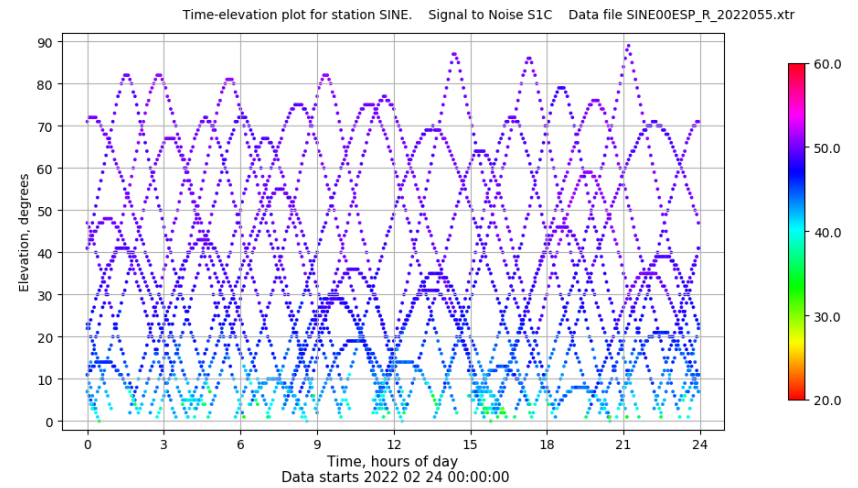
Multipath GPS L1 y L2



Azimut-Elevacion



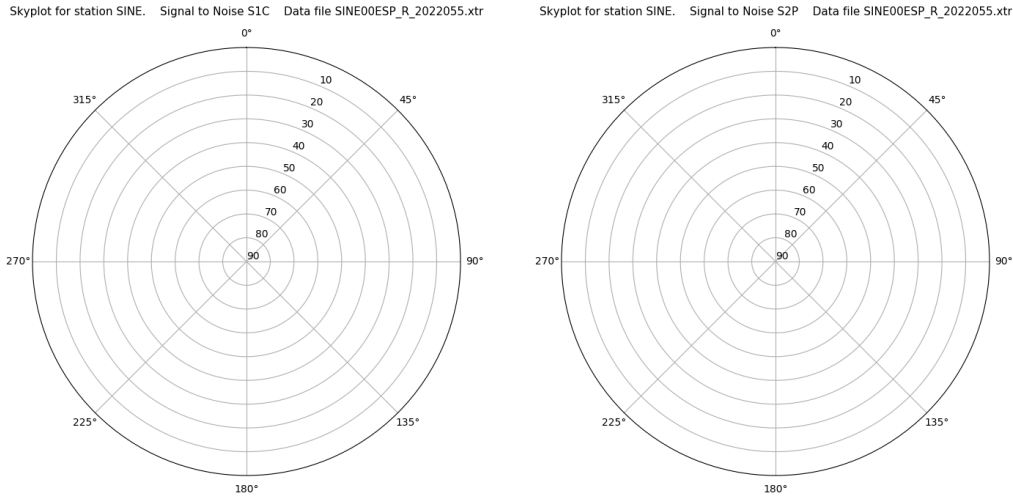
Tiempo-Elevacion



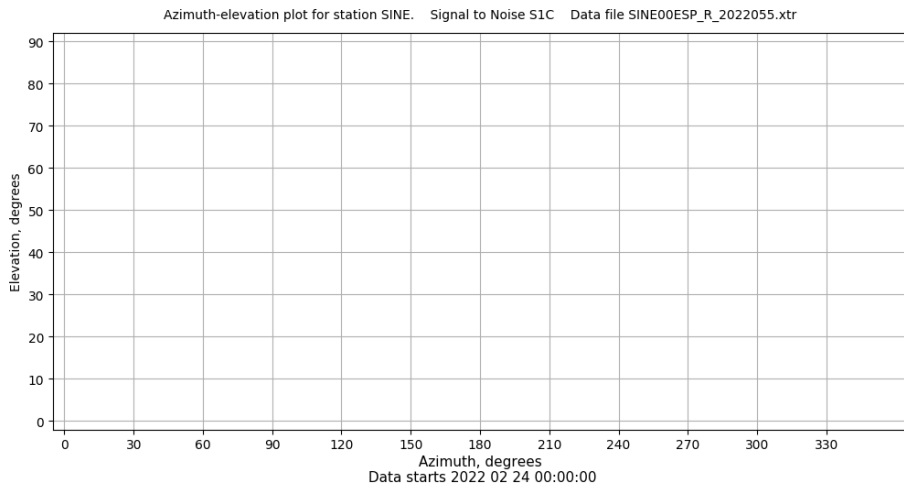
Control de calidad GNSS GLO diario

Estacion: SINE
 Fecha: 2022 02 24
 Dia del año: 055

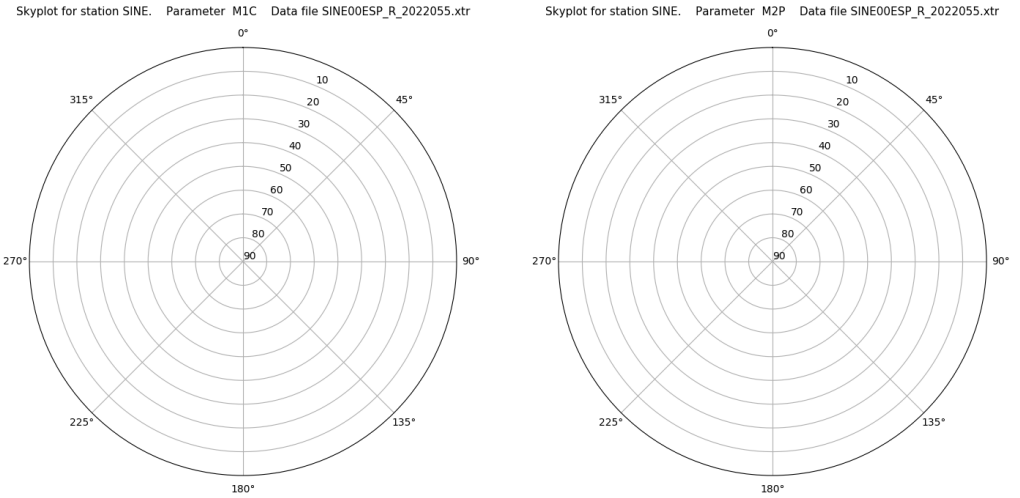
Señal-Ruido GLO L1 y L2



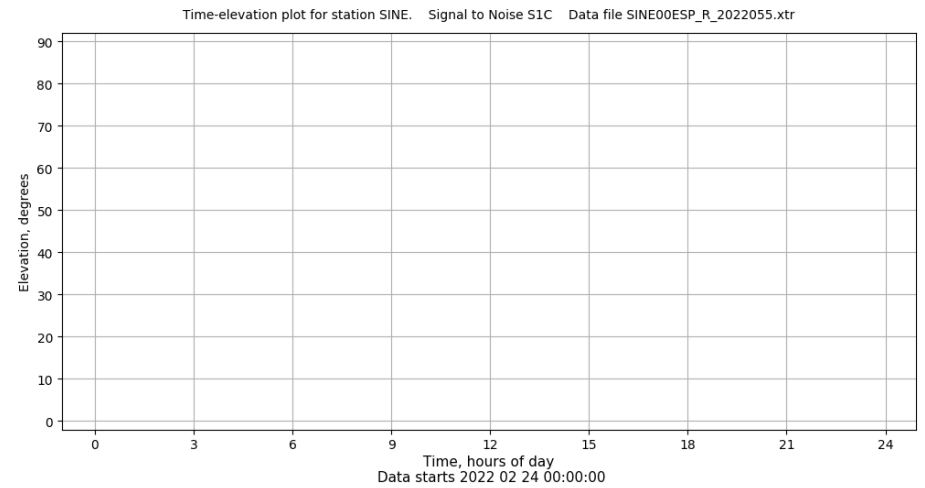
Azimut-Elevacion



Multipath GLO L1 y L2



Tiempo-Elevacion

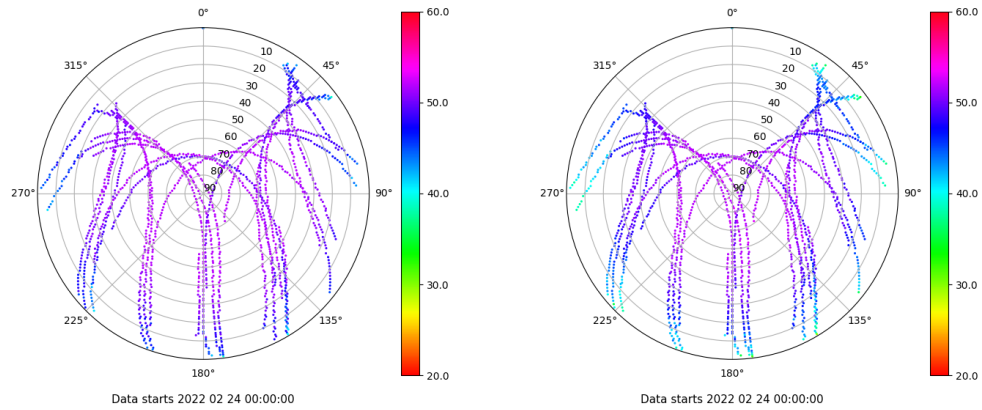


Control de calidad GNSS GAL diario

Estacion: SINE
 Fecha: 2022 02 24
 Dia del año: 055

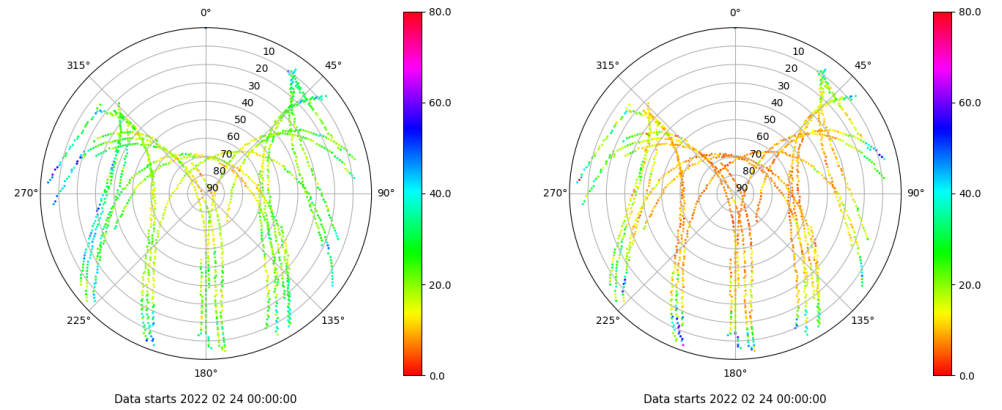
Señal-Ruido GAL E1 y E5

Skyplot for station SINE. Signal to Noise S1C Data file SINE00ESP_R_2022055.xtr Skyplot for station SINE. Signal to Noise S5Q Data file SINE00ESP_R_2022055.xtr



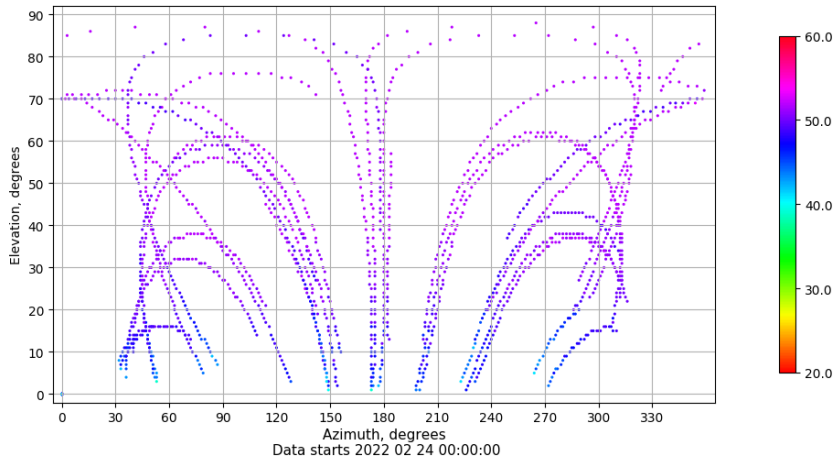
Multipath GAL E1 y E5

Skyplot for station SINE. Parameter M1C Data file SINE00ESP_R_2022055.xtr Skyplot for station SINE. Parameter M5Q Data file SINE00ESP_R_2022055.xtr



Azimuth-Elevacion

Azimuth-elevation plot for station SINE. Signal to Noise S1C Data file SINE00ESP_R_2022055.xtr



Tiempo-Elevacion

Time-elevation plot for station SINE. Signal to Noise S1C Data file SINE00ESP_R_2022055.xtr

