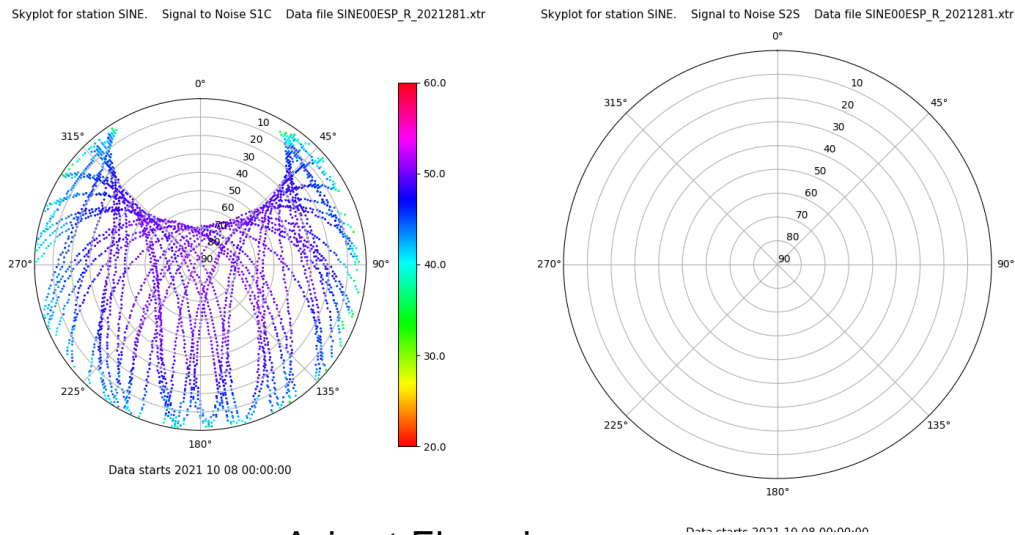


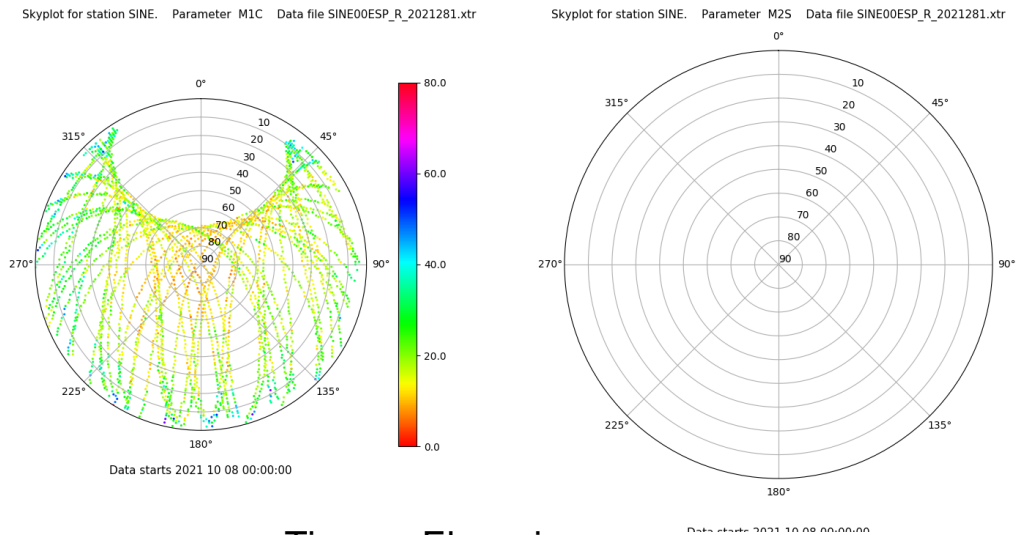
# Control de calidad GNSS GPS diario

Estacion: SINE  
Fecha: 2021 10 08  
Dia del año: 281

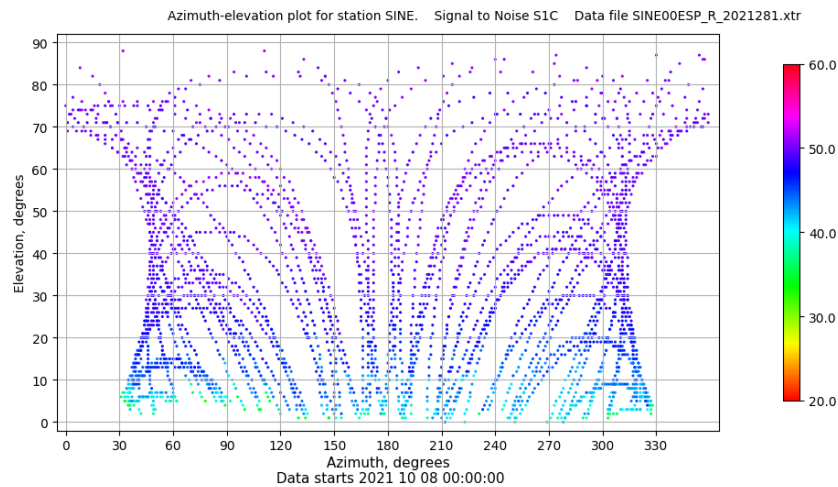
## Señal-Ruido GPS L1 y L2



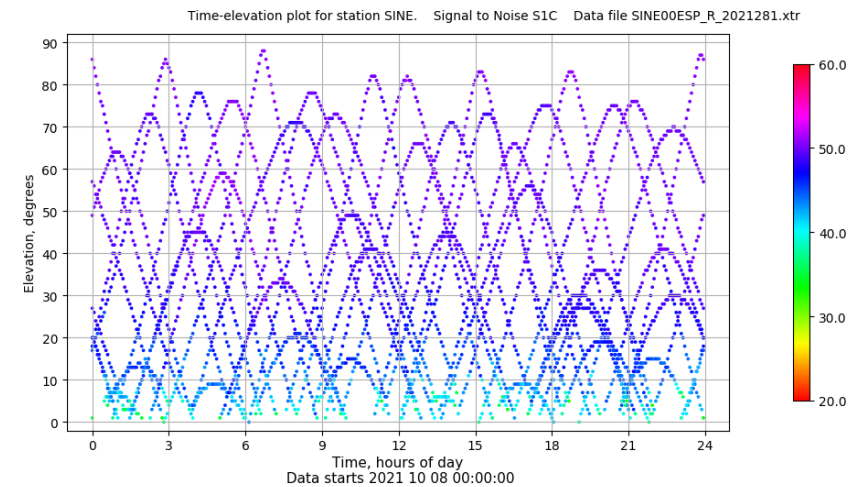
## Multipath GPS L1 y L2



## Azimut-Elevacion



## Tiempo-Elevacion



# Control de calidad GNSS GLO diario

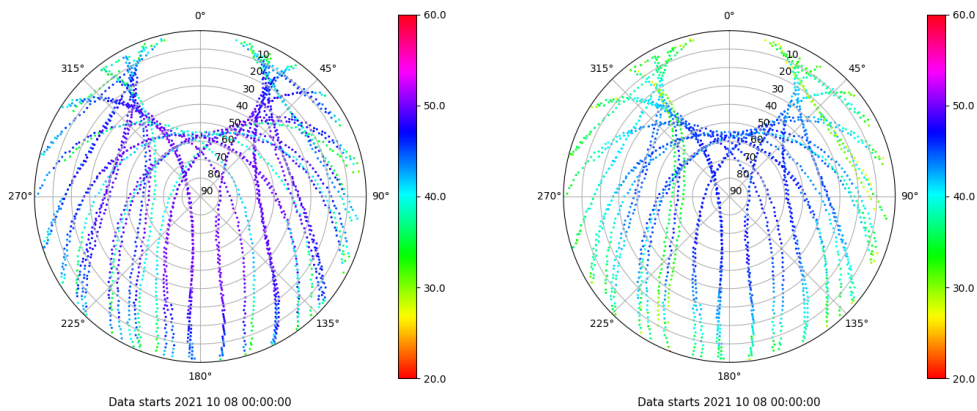
Estacion: SINE

Fecha: 2021 10 08

Día del año: 281

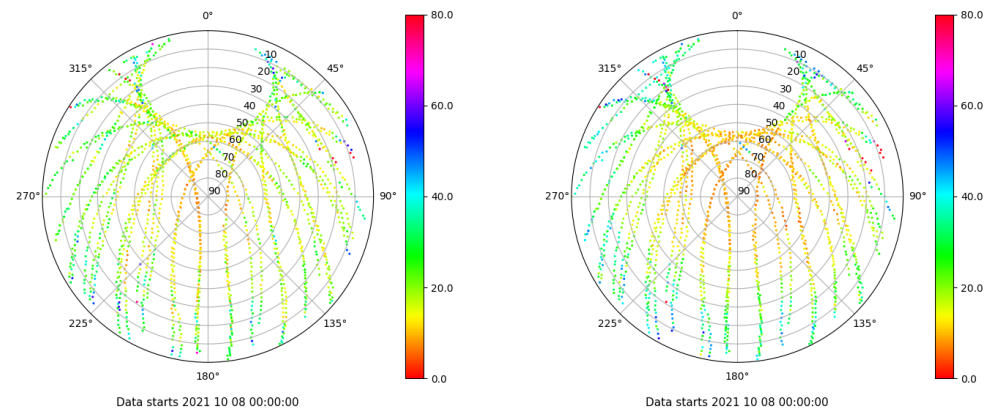
## Señal-Ruido GLO L1 y L2

Skyplot for station SINE. Signal to Noise S1C Data file SINE00ESP\_R\_2021281.xtr Skyplot for station SINE. Signal to Noise S2P Data file SINE00ESP\_R\_2021281.xtr



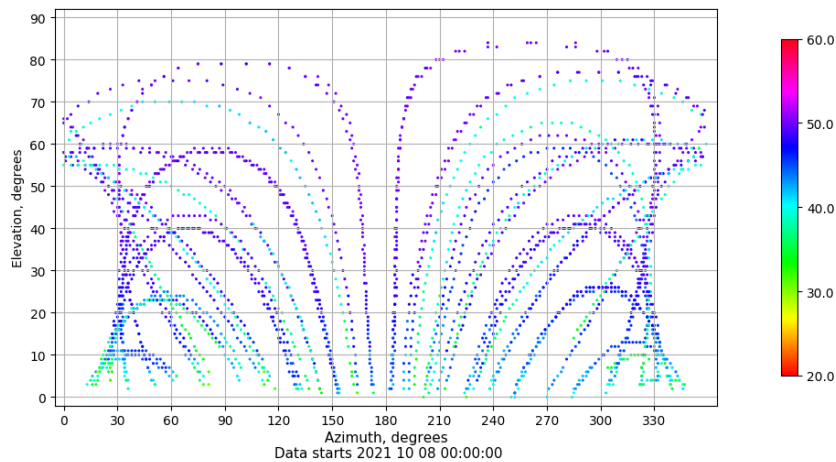
## Multipath GLO L1 y L2

Skyplot for station SINE. Parameter M1C Data file SINE00ESP\_R\_2021281.xtr Skyplot for station SINE. Parameter M2P Data file SINE00ESP\_R\_2021281.xtr



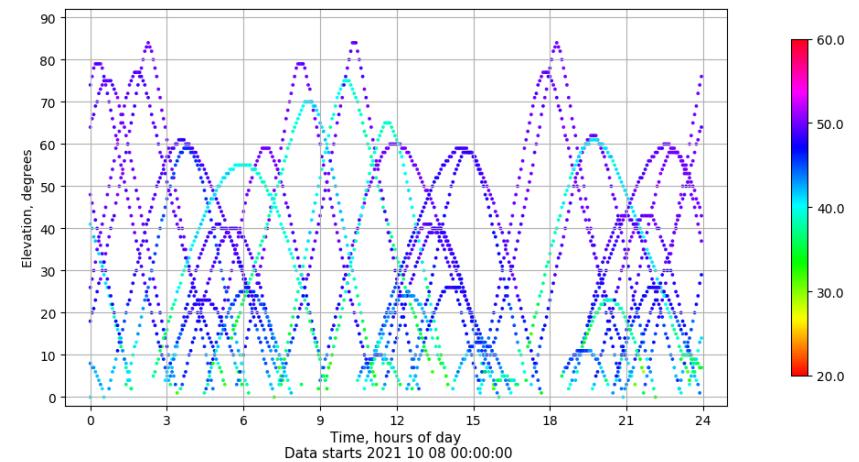
## Azimut-Elevacion

Azimuth-elevation plot for station SINE. Signal to Noise S1C Data file SINE00ESP\_R\_2021281.xtr



## Tiempo-Elevacion

Time-elevation plot for station SINE. Signal to Noise S1C Data file SINE00ESP\_R\_2021281.xtr

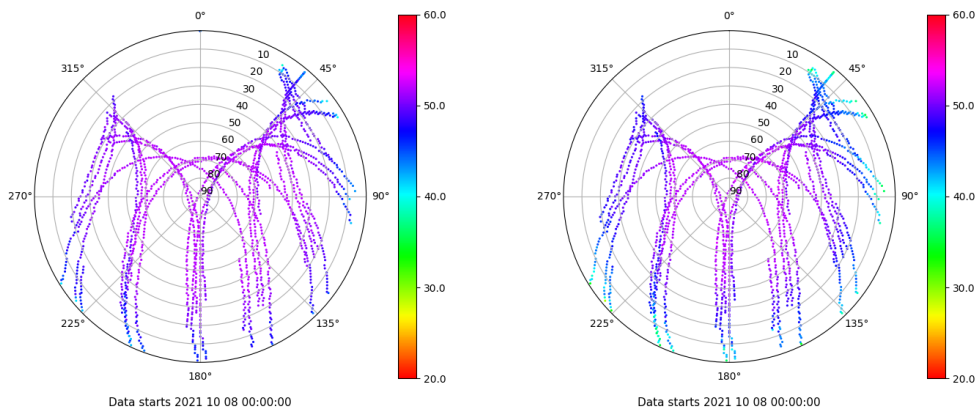


# Control de calidad GNSS GAL diario

Estacion: SINE  
Fecha: 2021 10 08  
Dia del año: 281

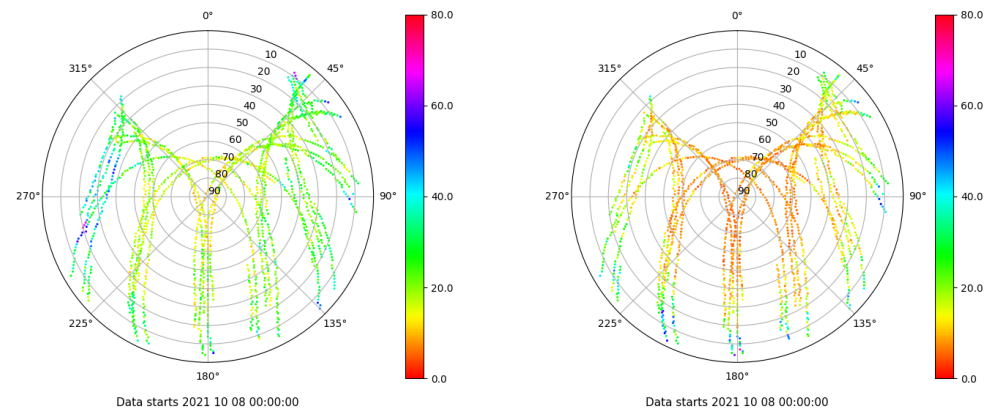
## Señal-Ruido GAL E1 y E5

Skyplot for station SINE. Signal to Noise S1C Data file SINE00ESP\_R\_2021281.xtr Skyplot for station SINE. Signal to Noise S5Q Data file SINE00ESP\_R\_2021281.xtr



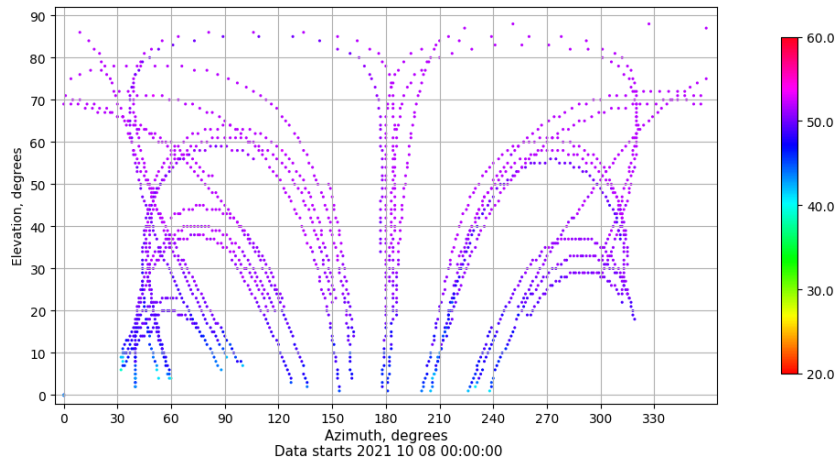
## Multipath GAL E1 y E5

Skyplot for station SINE. Parameter M1C Data file SINE00ESP\_R\_2021281.xtr Skyplot for station SINE. Parameter M5Q Data file SINE00ESP\_R\_2021281.xtr



## Azimut-Elevacion

Azimuth-elevation plot for station SINE. Signal to Noise S1C Data file SINE00ESP\_R\_2021281.xtr



## Tiempo-Elevacion

Time-elevation plot for station SINE. Signal to Noise S1C Data file SINE00ESP\_R\_2021281.xtr

