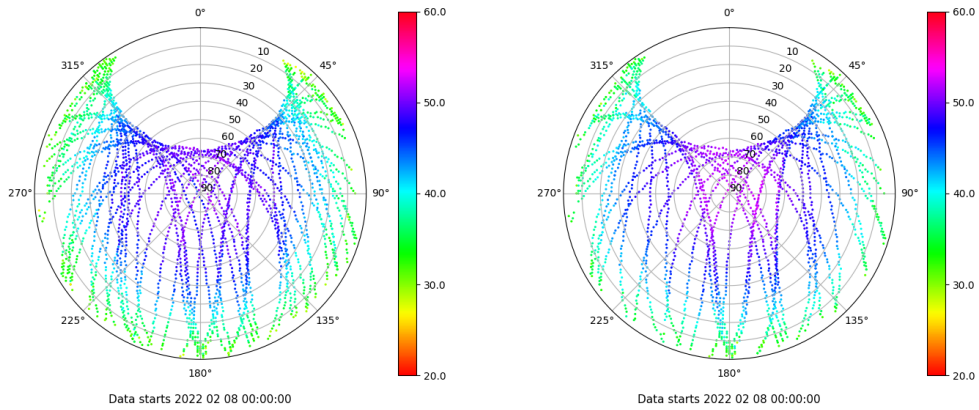


Control de calidad GNSS GPS diario

Estacion: SEV1
 Fecha: 2022 02 08
 Dia del año: 039

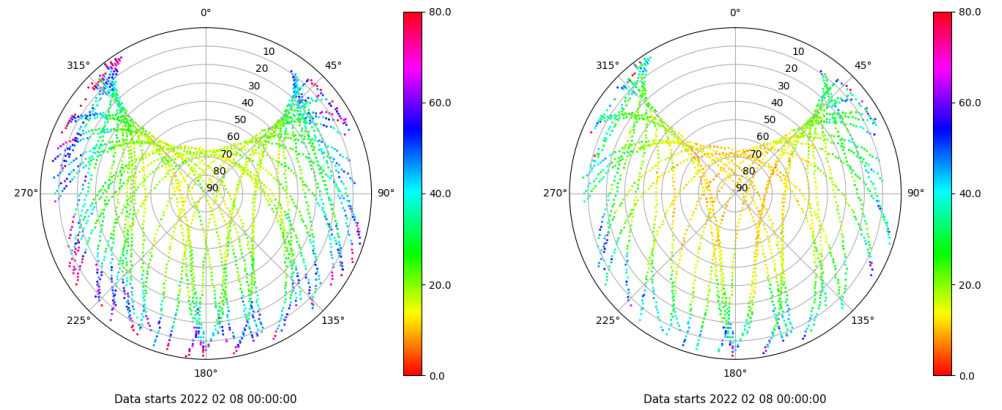
Señal-Ruido GPS L1 y L2

Skyplot for station SEV1. Signal to Noise S1C Data file SEV100ESP_R_2022039.xtr Skyplot for station SEV1. Signal to Noise S2X Data file SEV100ESP_R_2022039.xtr



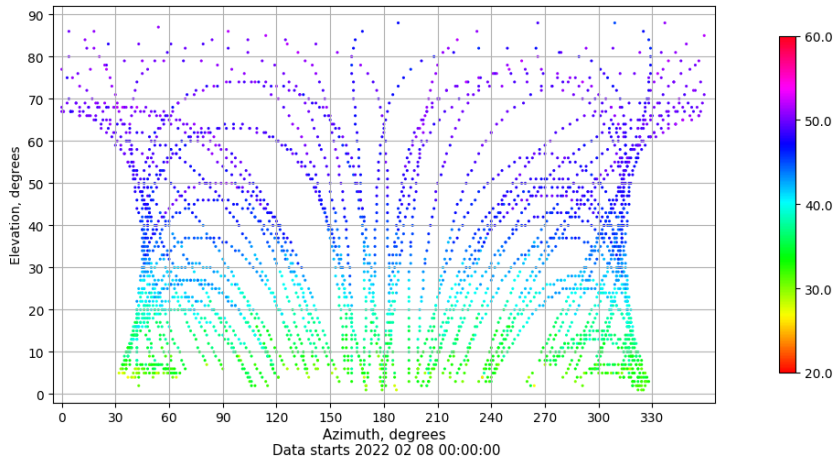
Multipath GPS L1 y L2

Skyplot for station SEV1. Parameter M1C Data file SEV100ESP_R_2022039.xtr Skyplot for station SEV1. Parameter M2X Data file SEV100ESP_R_2022039.xtr



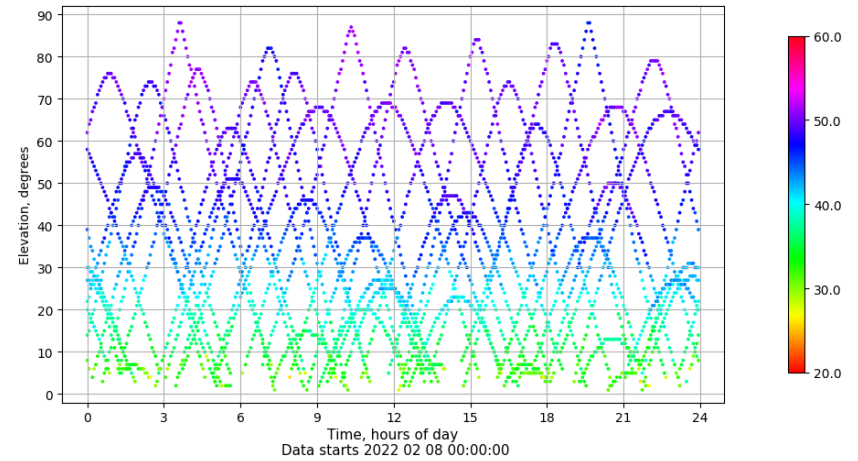
Azimuth-Elevacion

Azimuth-elevation plot for station SEV1. Signal to Noise S1C Data file SEV100ESP_R_2022039.xtr



Tiempo-Elevacion

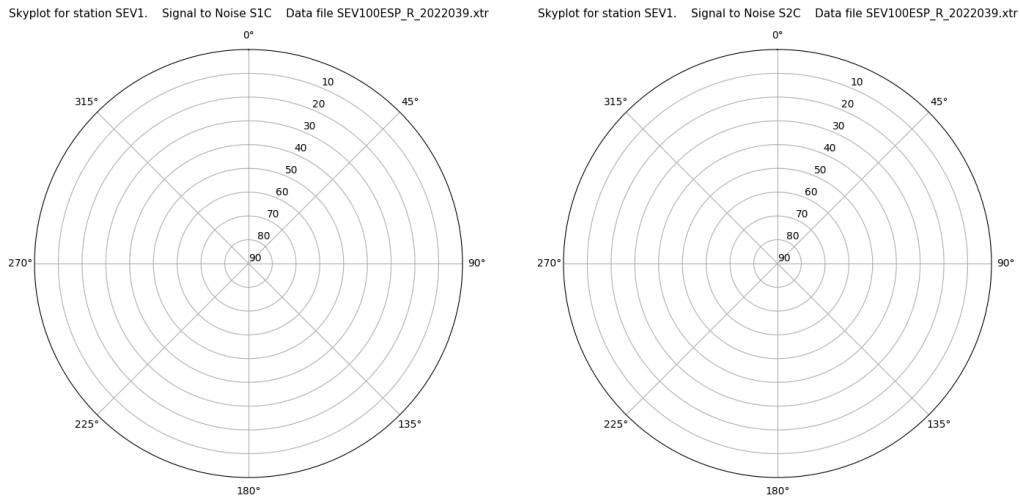
Time-elevation plot for station SEV1. Signal to Noise S1C Data file SEV100ESP_R_2022039.xtr



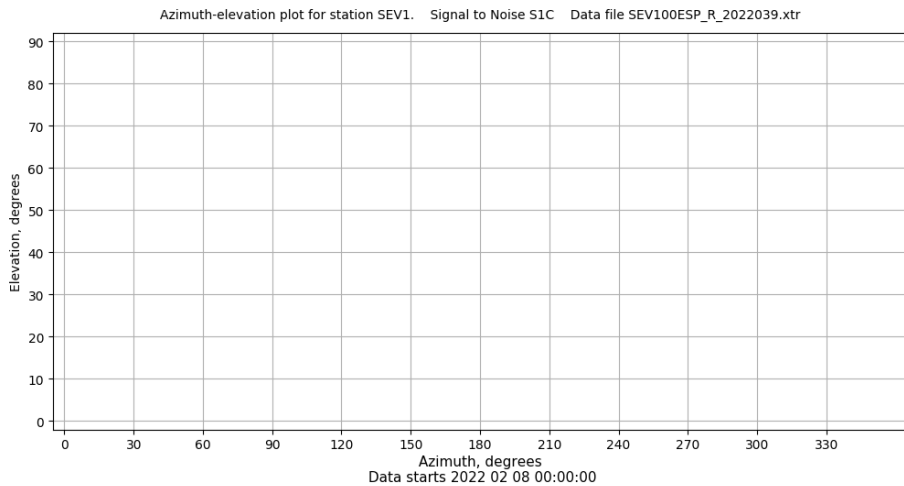
Control de calidad GNSS GLO diario

Estacion: SEV1
 Fecha: 2022 02 08
 Dia del año: 039

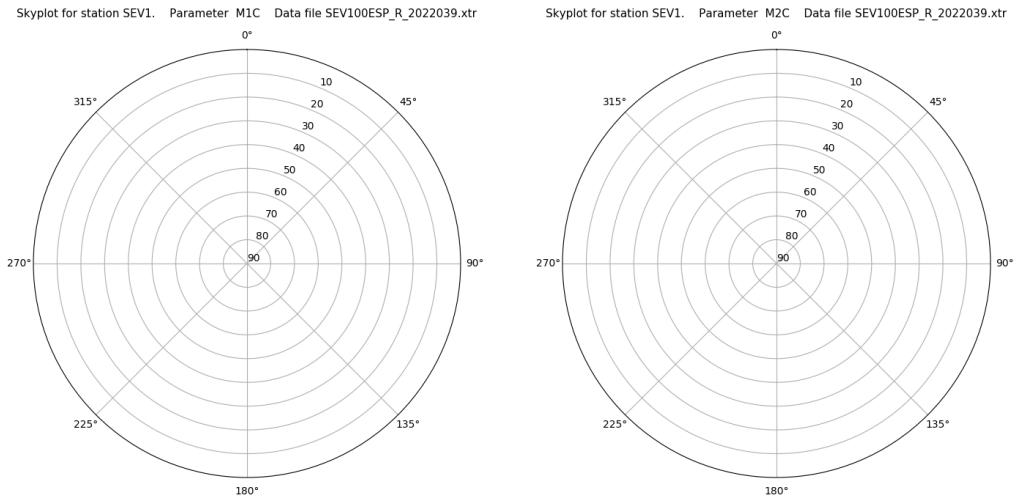
Señal-Ruido GLO L1 y L2



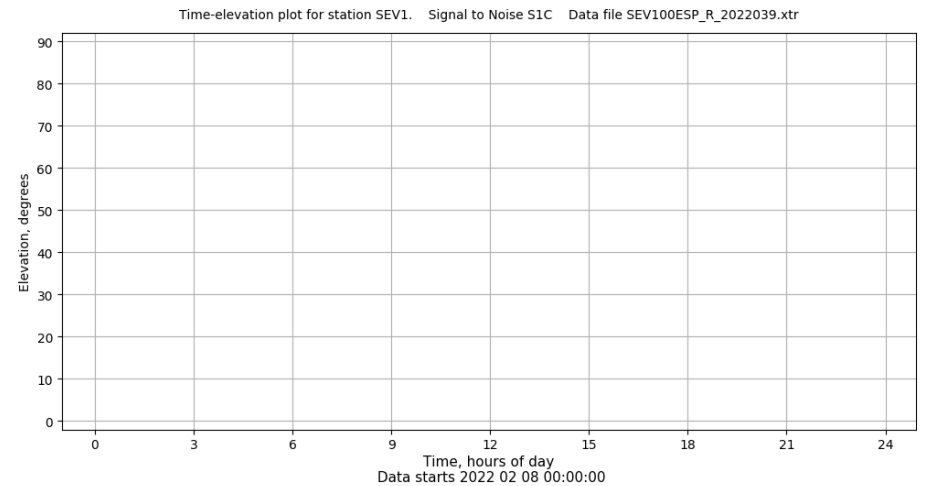
Azimut-Elevacion



Multipath GLO L1 y L2



Tiempo-Elevacion



Control de calidad GNSS GAL diario

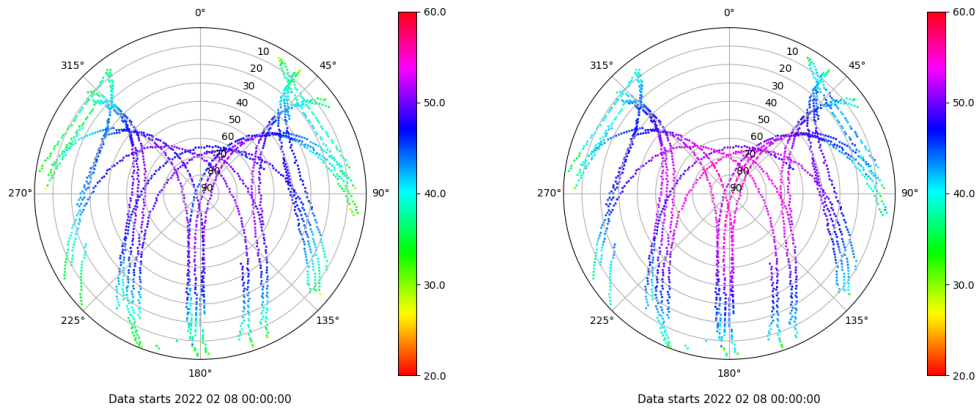
Estacion: SEV1

Fecha: 2022 02 08

Dia del año: 039

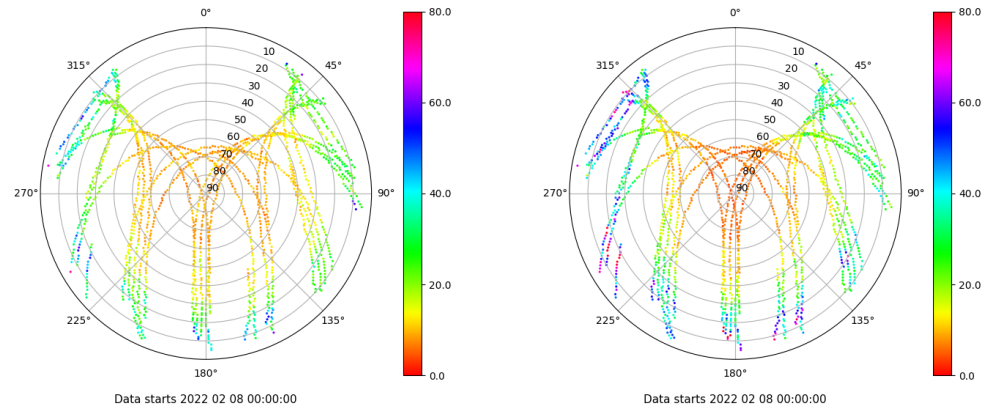
Señal-Ruido GAL E1 y E5

Skyplot for station SEV1. Signal to Noise S1X Data file SEV100ESP_R_2022039.xtr Skyplot for station SEV1. Signal to Noise S5X Data file SEV100ESP_R_2022039.xtr



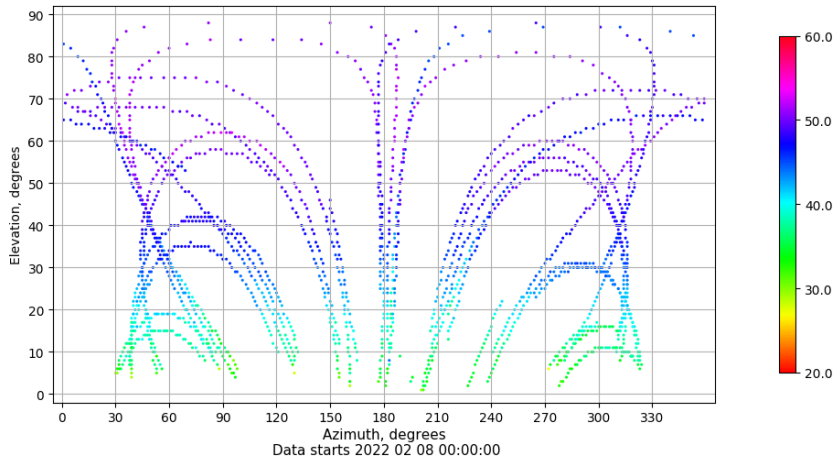
Multipath GAL E1 y E5

Skyplot for station SEV1. Parameter M1X Data file SEV100ESP_R_2022039.xtr Skyplot for station SEV1. Parameter M5X Data file SEV100ESP_R_2022039.xtr



Azimuth-Elevacion

Azimuth-elevation plot for station SEV1. Signal to Noise S1X Data file SEV100ESP_R_2022039.xtr



Tiempo-Elevacion

Time-elevation plot for station SEV1. Signal to Noise S1X Data file SEV100ESP_R_2022039.xtr

