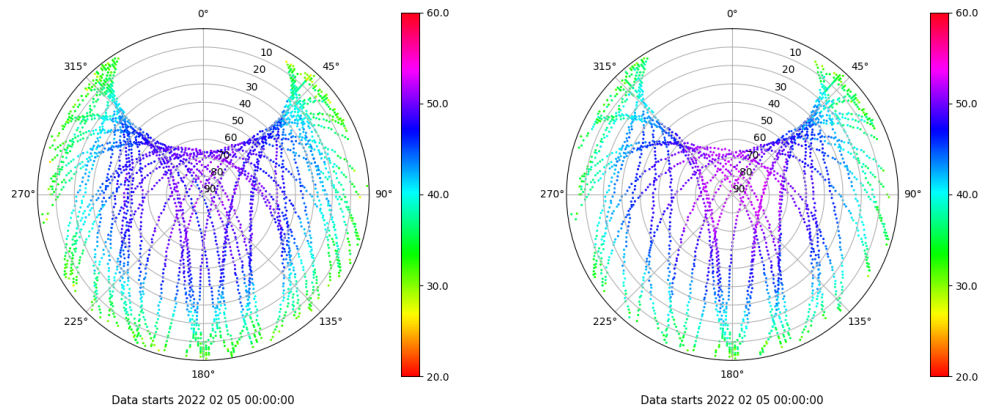


Control de calidad GNSS GPS diario

Estacion: SEV1
 Fecha: 2022 02 05
 Dia del año: 036

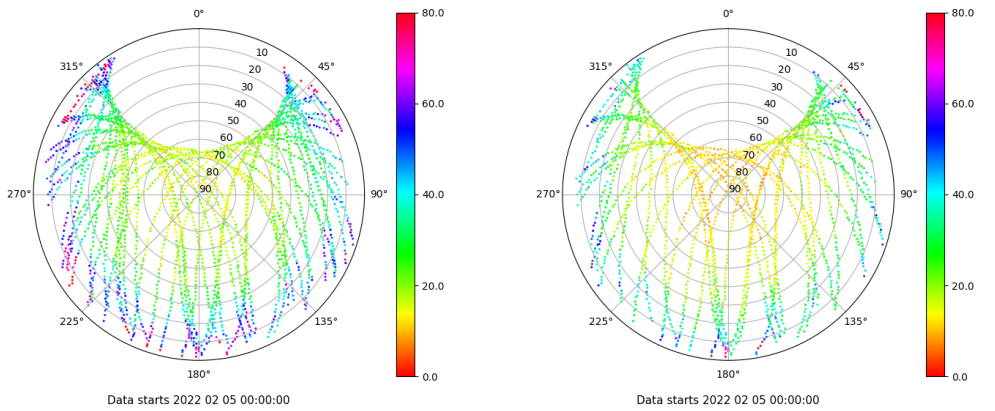
Señal-Ruido GPS L1 y L2

Skyplot for station SEV1. Signal to Noise S1C Data file SEV100ESP_R_2022036.xtr Skyplot for station SEV1. Signal to Noise S2X Data file SEV100ESP_R_2022036.xtr



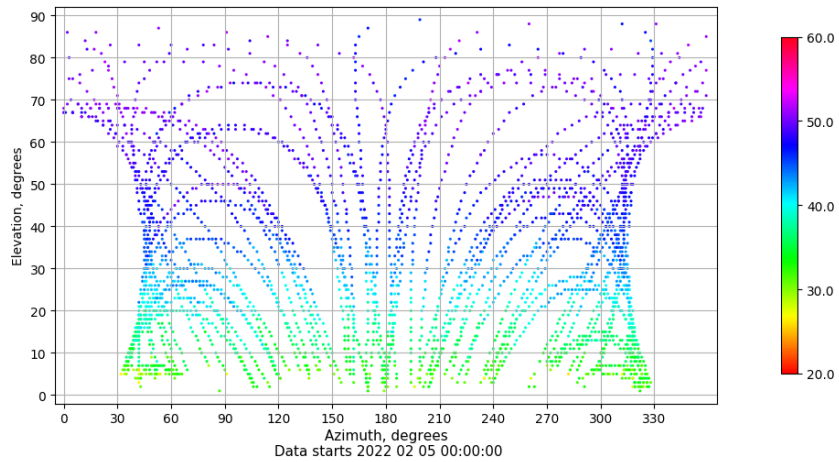
Multipath GPS L1 y L2

Skyplot for station SEV1. Parameter M1C Data file SEV100ESP_R_2022036.xtr Skyplot for station SEV1. Parameter M2X Data file SEV100ESP_R_2022036.xtr



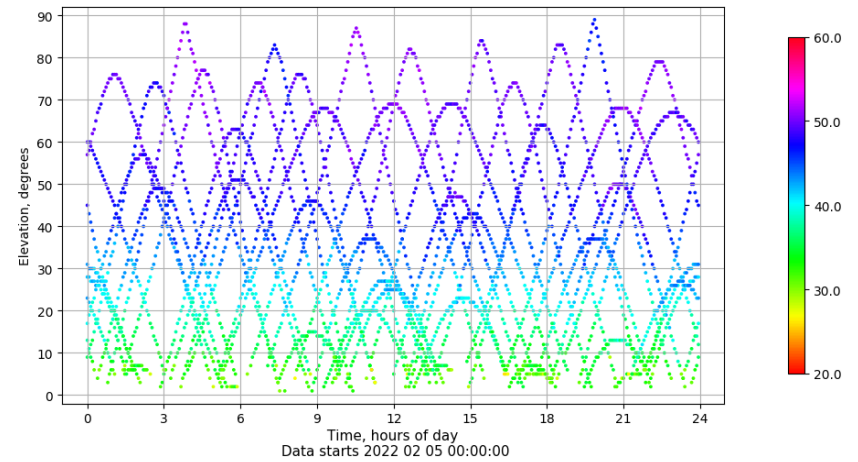
Azimuth-Elevacion

Azimuth-elevation plot for station SEV1. Signal to Noise S1C Data file SEV100ESP_R_2022036.xtr



Tiempo-Elevacion

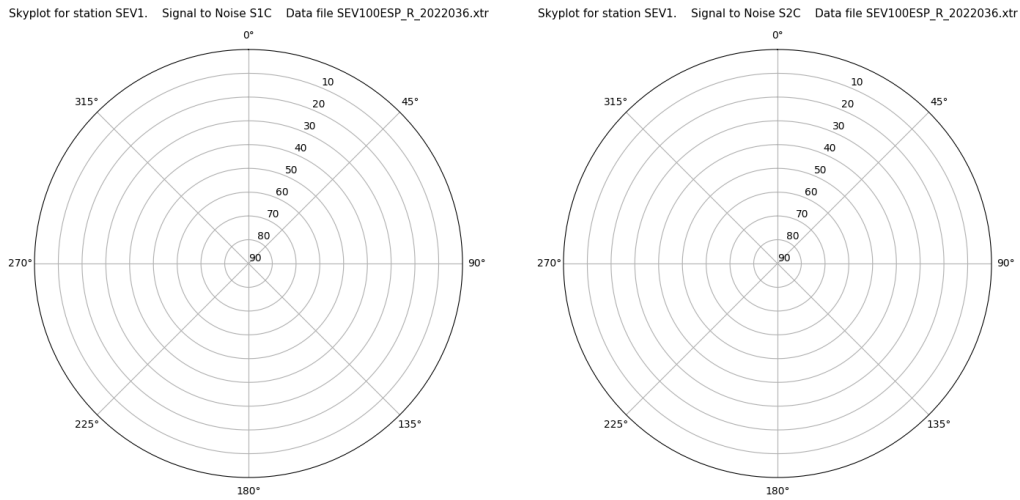
Time-elevation plot for station SEV1. Signal to Noise S1C Data file SEV100ESP_R_2022036.xtr



Control de calidad GNSS GLO diario

Estacion: SEV1
 Fecha: 2022 02 05
 Dia del año: 036

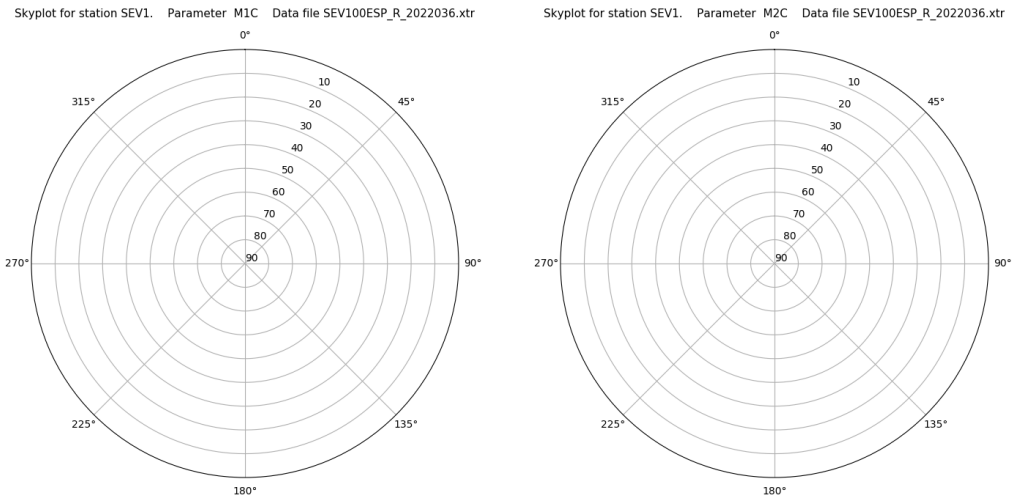
Señal-Ruido GLO L1 y L2



Data starts 2022 02 05 00:00:00

Data starts 2022 02 05 00:00:00

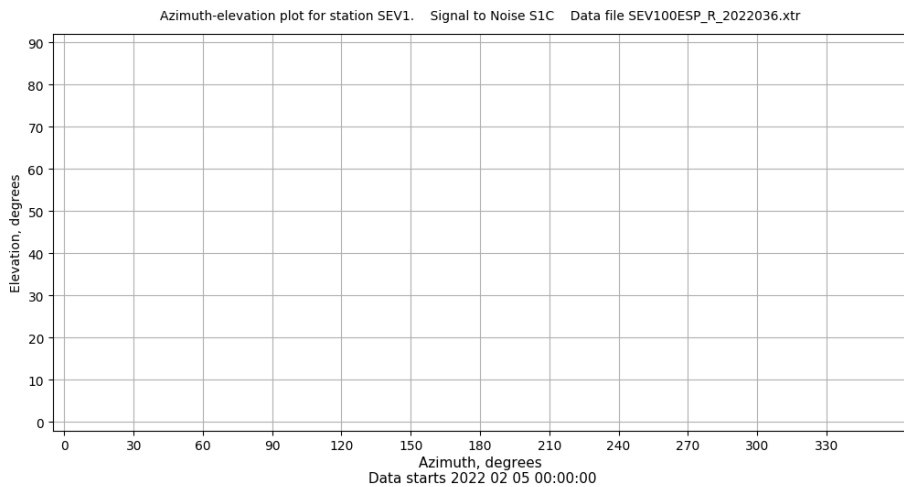
Multipath GLO L1 y L2



Data starts 2022 02 05 00:00:00

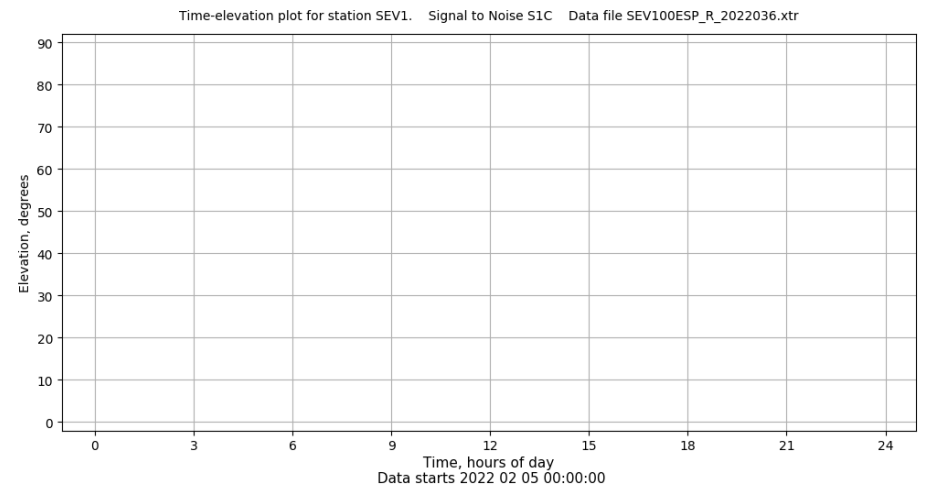
Data starts 2022 02 05 00:00:00

Azimut-Elevacion



Data starts 2022 02 05 00:00:00

Tiempo-Elevacion



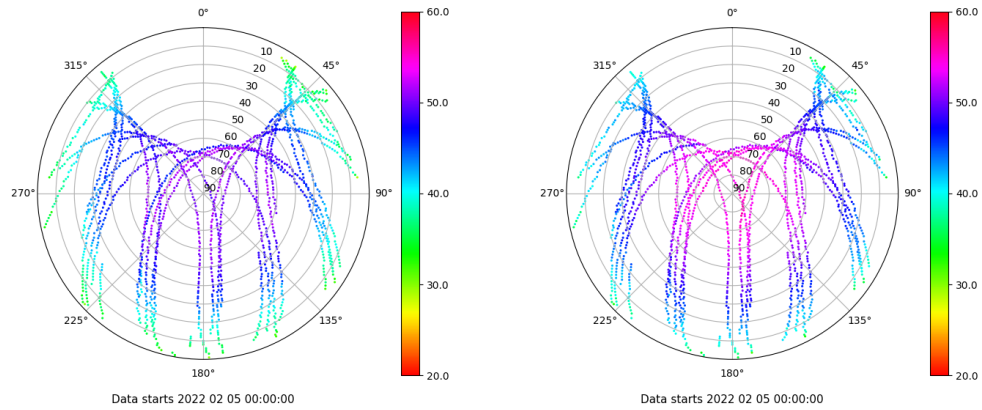
Data starts 2022 02 05 00:00:00

Control de calidad GNSS GAL diario

Estacion: SEV1
 Fecha: 2022 02 05
 Dia del año: 036

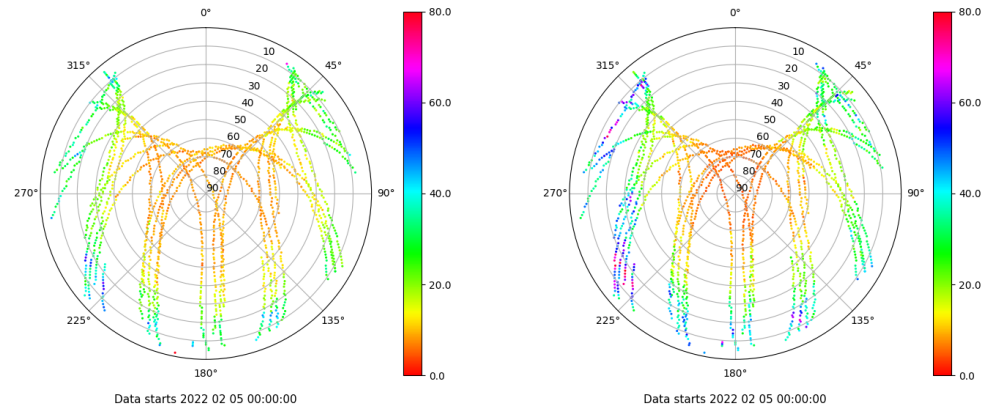
Señal-Ruido GAL E1 y E5

Skyplot for station SEV1. Signal to Noise S1X Data file SEV100ESP_R_2022036.xtr Skyplot for station SEV1. Signal to Noise S5X Data file SEV100ESP_R_2022036.xtr



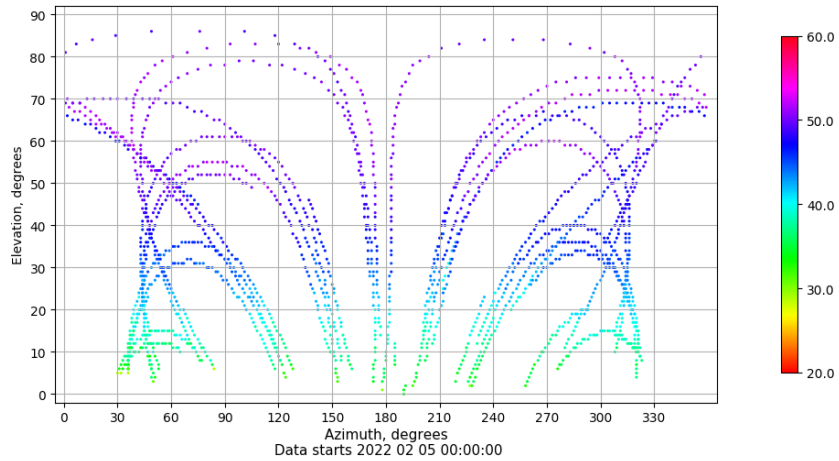
Multipath GAL E1 y E5

Skyplot for station SEV1. Parameter M1X Data file SEV100ESP_R_2022036.xtr Skyplot for station SEV1. Parameter M5X Data file SEV100ESP_R_2022036.xtr



Azimuth-Elevacion

Azimuth-elevation plot for station SEV1. Signal to Noise S1X Data file SEV100ESP_R_2022036.xtr



Tiempo-Elevacion

Time-elevation plot for station SEV1. Signal to Noise S1X Data file SEV100ESP_R_2022036.xtr

