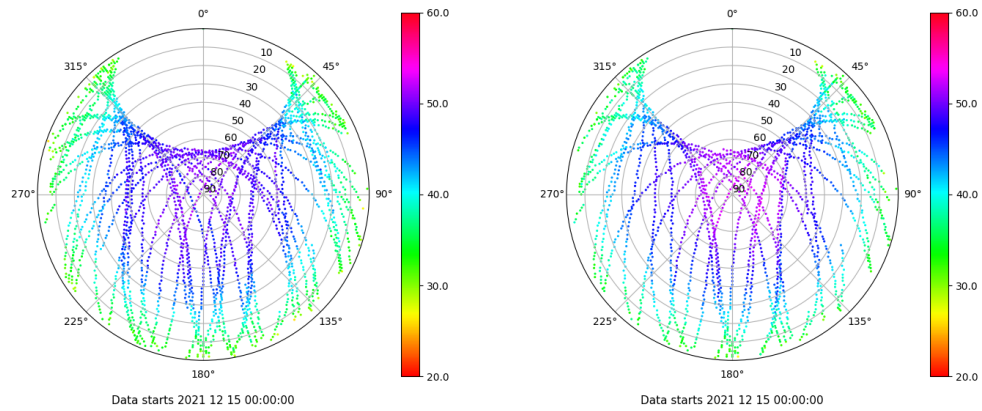


# Control de calidad GNSS GPS diario

Estacion: SEV1  
 Fecha: 2021 12 15  
 Dia del año: 349

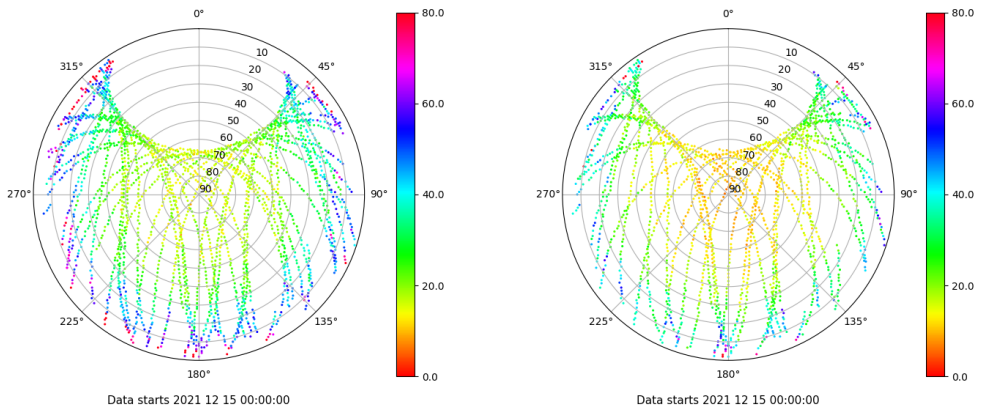
## Señal-Ruido GPS L1 y L2

Skyplot for station SEV1. Signal to Noise S1C Data file SEV100ESP\_R\_2021349.xtr Skyplot for station SEV1. Signal to Noise S2X Data file SEV100ESP\_R\_2021349.xtr



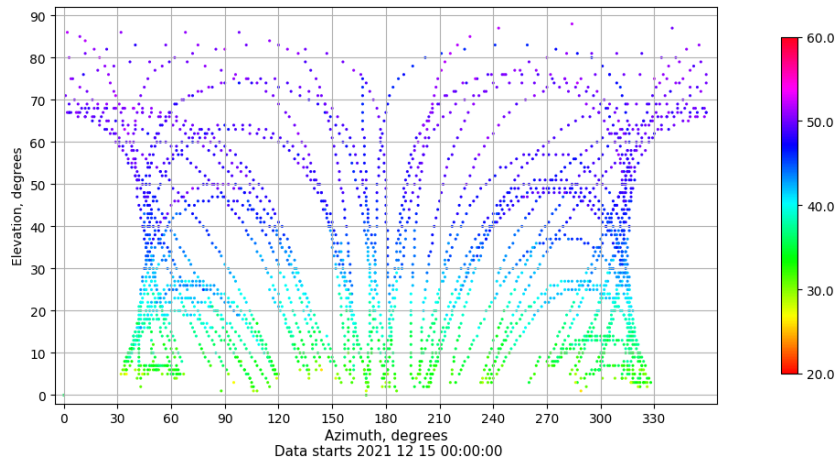
## Multipath GPS L1 y L2

Skyplot for station SEV1. Parameter M1C Data file SEV100ESP\_R\_2021349.xtr Skyplot for station SEV1. Parameter M2X Data file SEV100ESP\_R\_2021349.xtr



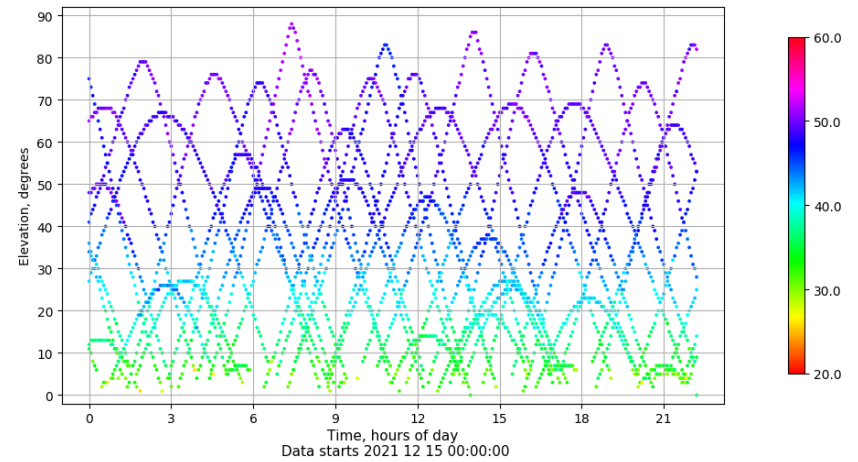
## Azimuth-Elevacion

Azimuth-elevation plot for station SEV1. Signal to Noise S1C Data file SEV100ESP\_R\_2021349.xtr



## Tiempo-Elevacion

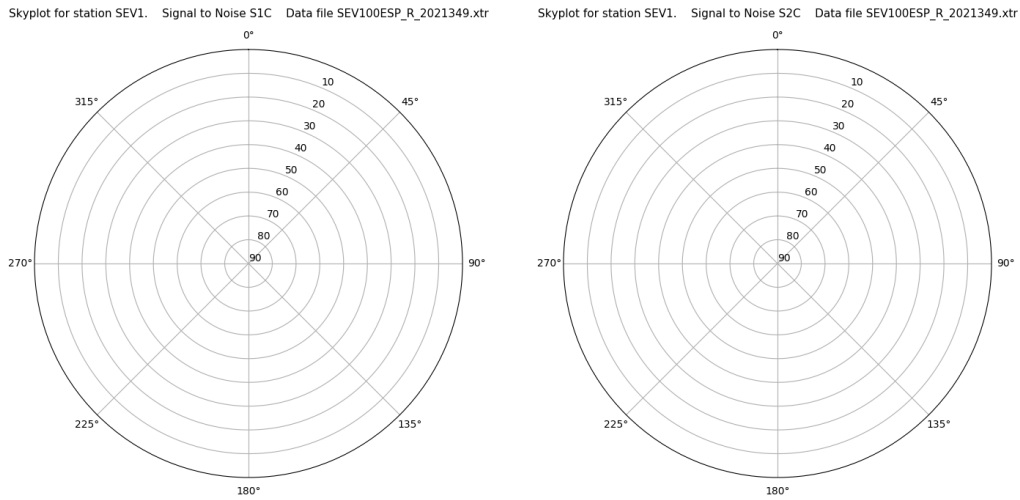
Time-elevation plot for station SEV1. Signal to Noise S1C Data file SEV100ESP\_R\_2021349.xtr



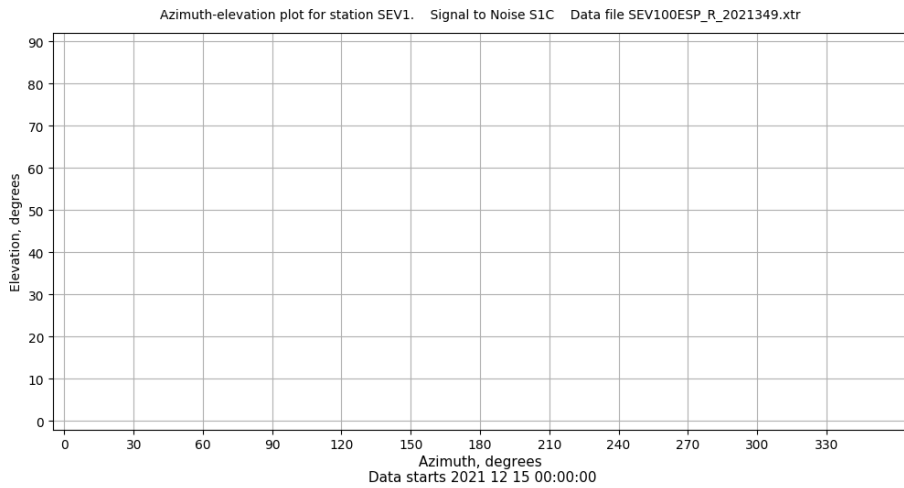
# Control de calidad GNSS GLO diario

Estacion: SEV1  
 Fecha: 2021 12 15  
 Dia del año: 349

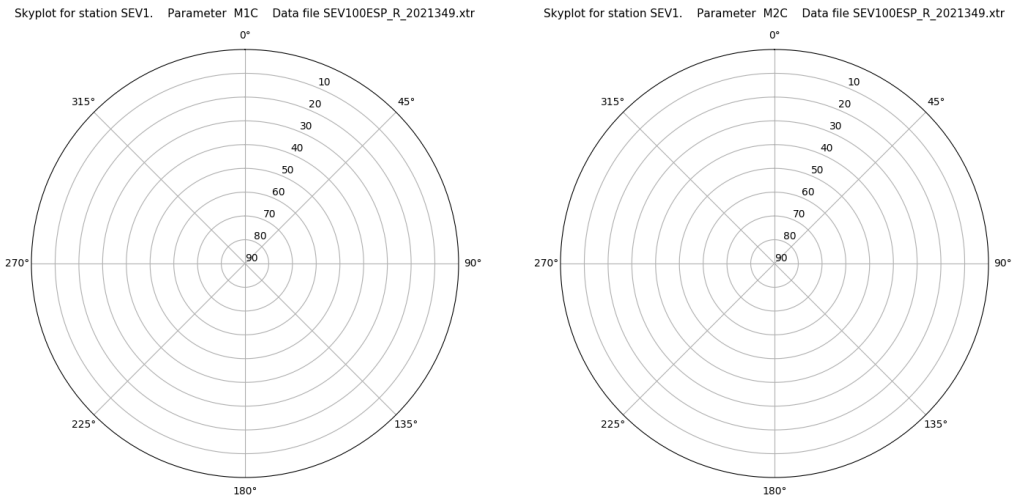
## Señal-Ruido GLO L1 y L2



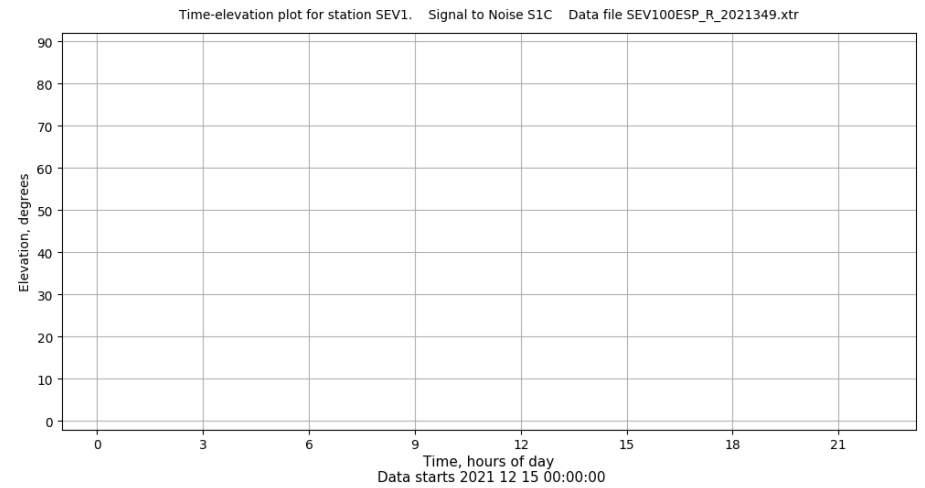
## Azimut-Elevacion



## Multipath GLO L1 y L2



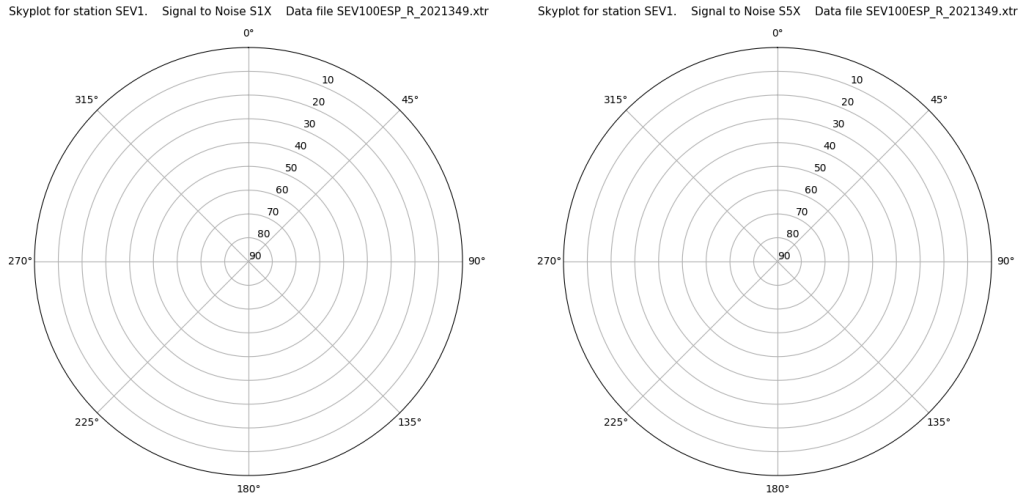
## Tiempo-Elevacion



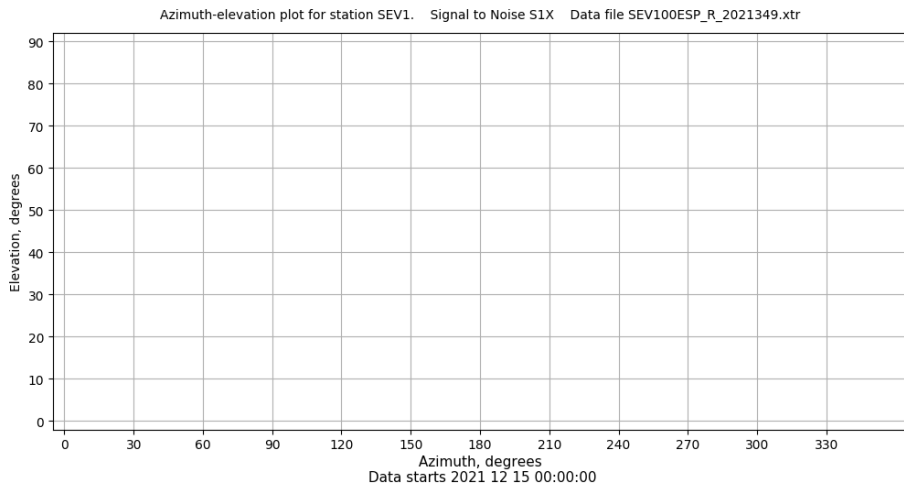
# Control de calidad GNSS GAL diario

Estacion: SEV1  
 Fecha: 2021 12 15  
 Dia del año: 349

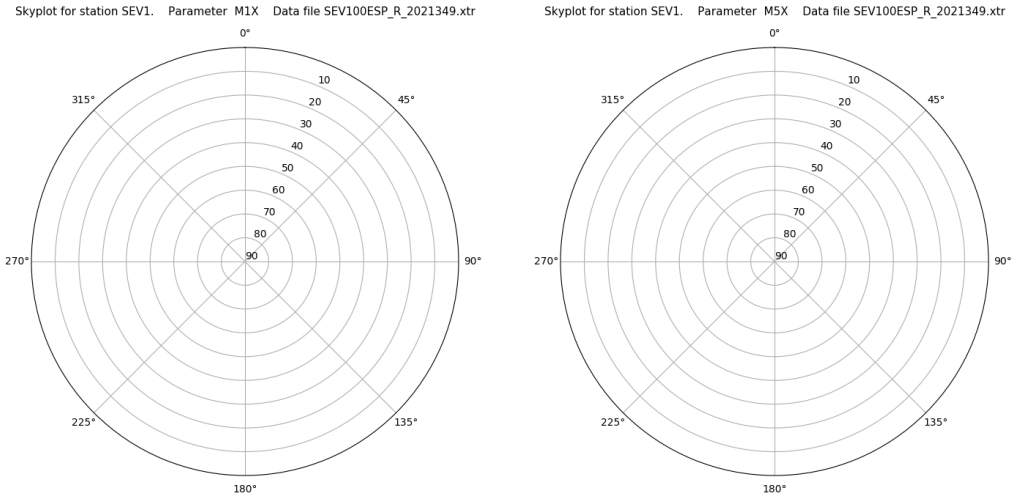
## Señal-Ruido GAL E1 y E5



## Azimut-Elevacion



## Multipath GAL E1 y E5



## Tiempo-Elevacion

