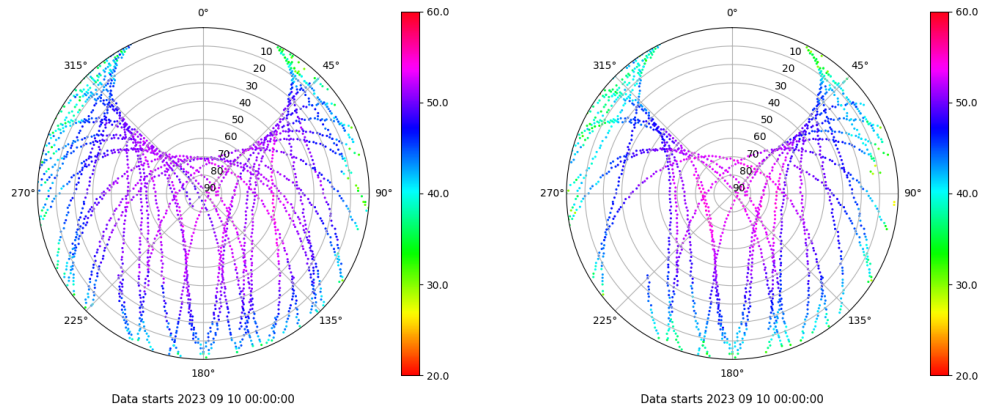


Control de calidad GNSS GPS diario

Estacion: SALA
 Fecha: 2023 09 10
 Dia del año: 253

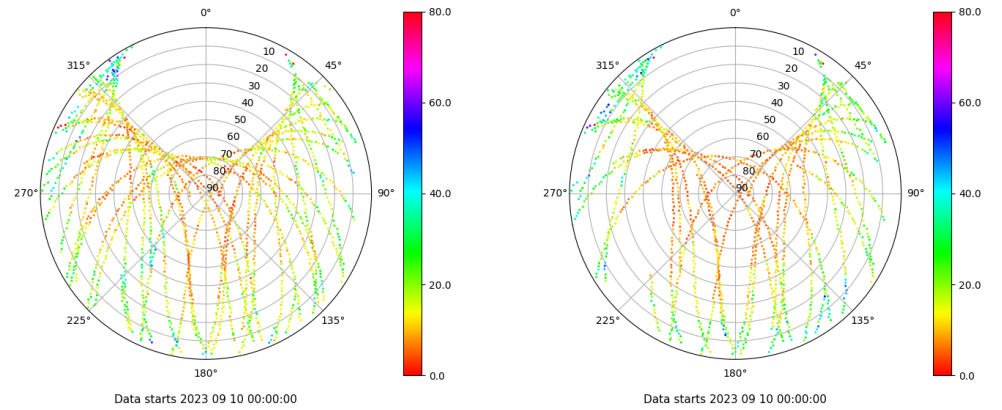
Señal-Ruido GPS L1 y L2

Skyplot for station SALA. Signal to Noise S1C Data file SALA00ESP_R_2023253.xtr Skyplot for station SALA. Signal to Noise S2S Data file SALA00ESP_R_2023253.xtr



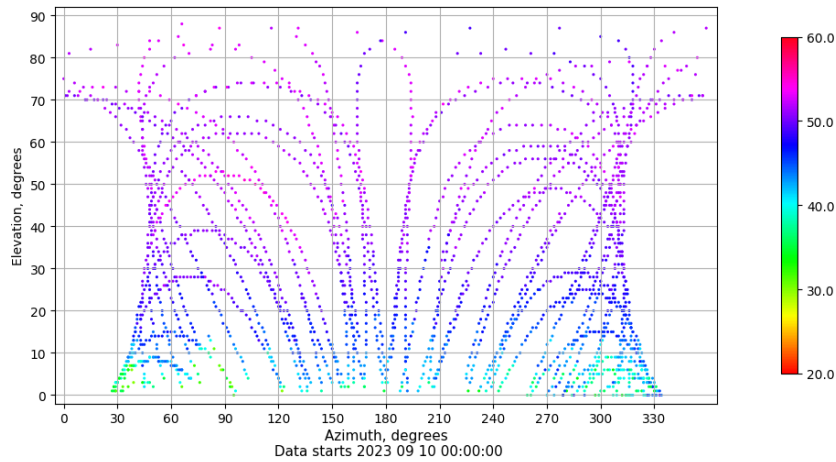
Multipath GPS L1 y L2

Skyplot for station SALA. Parameter M1C Data file SALA00ESP_R_2023253.xtr Skyplot for station SALA. Parameter M2S Data file SALA00ESP_R_2023253.xtr



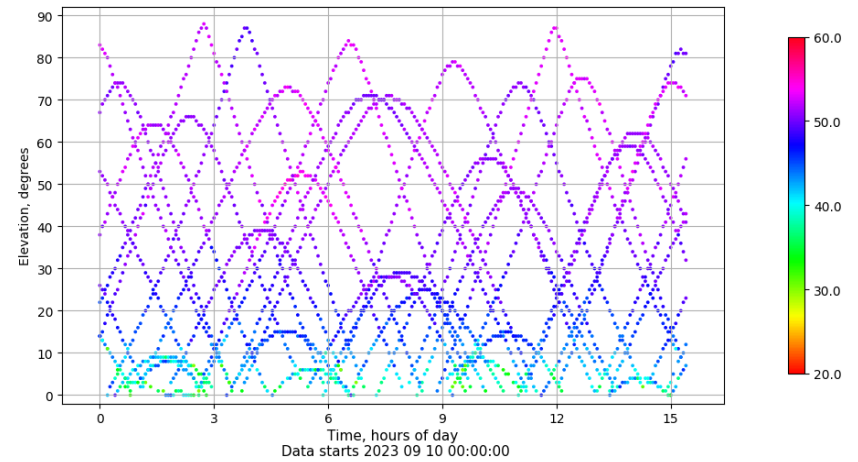
Azimuth-Elevacion

Azimuth-elevation plot for station SALA. Signal to Noise S1C Data file SALA00ESP_R_2023253.xtr



Tiempo-Elevacion

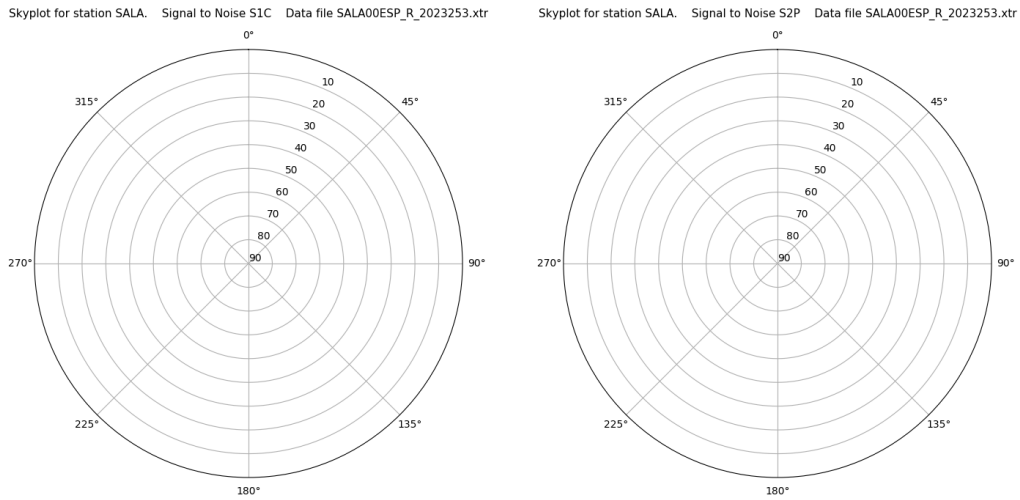
Time-elevation plot for station SALA. Signal to Noise S1C Data file SALA00ESP_R_2023253.xtr



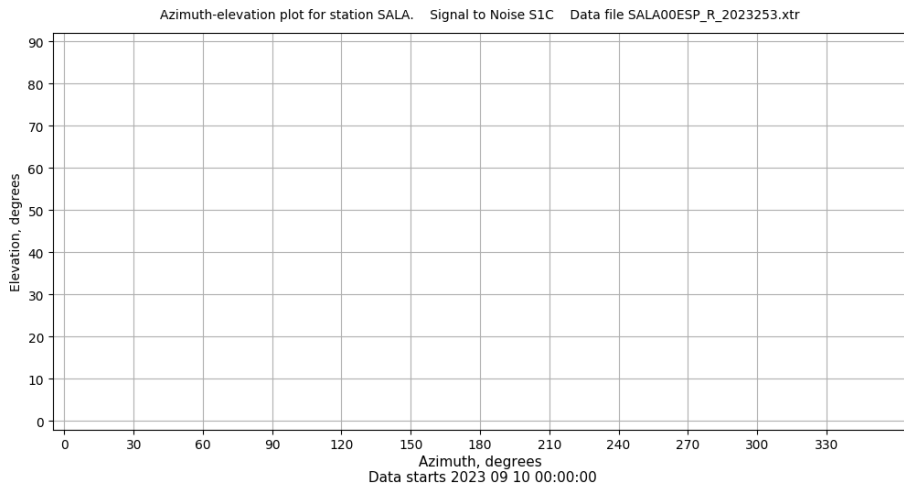
Control de calidad GNSS GLO diario

Estacion: SALA
 Fecha: 2023 09 10
 Dia del año: 253

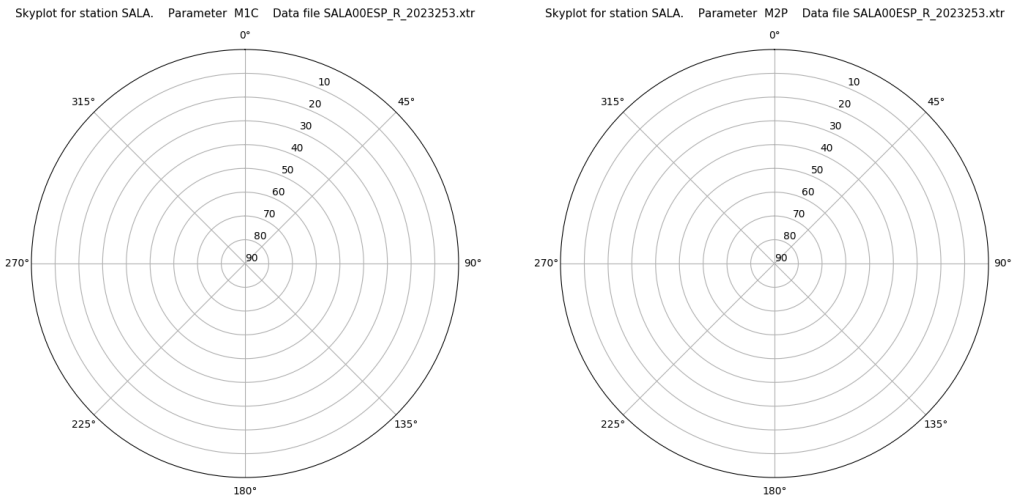
Señal-Ruido GLO L1 y L2



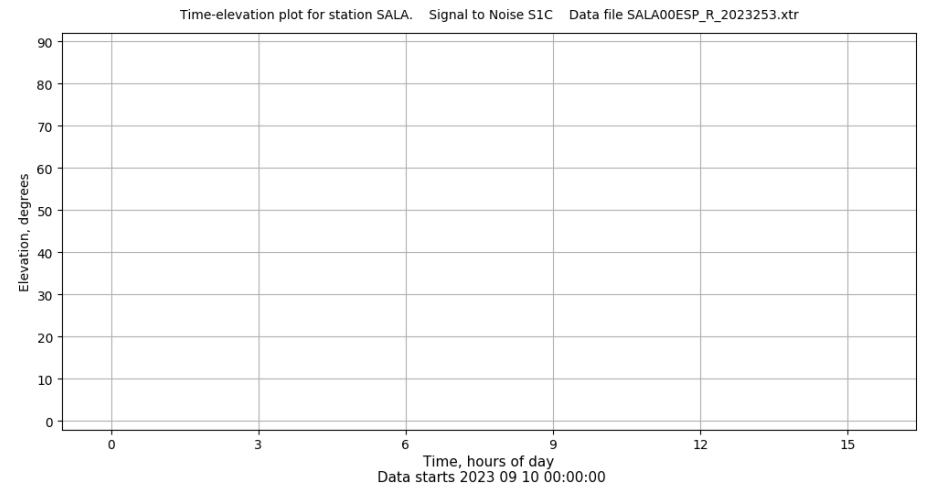
Azimut-Elevacion



Multipath GLO L1 y L2



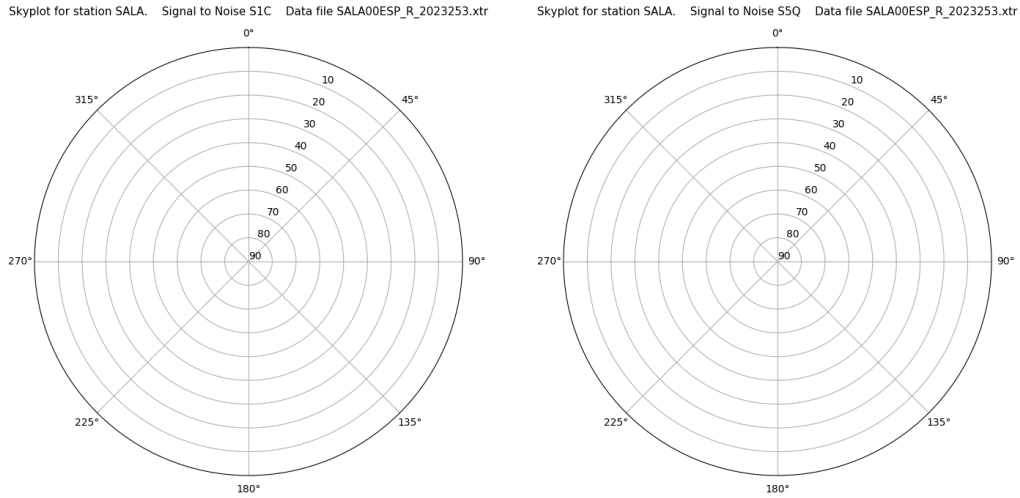
Tiempo-Elevacion



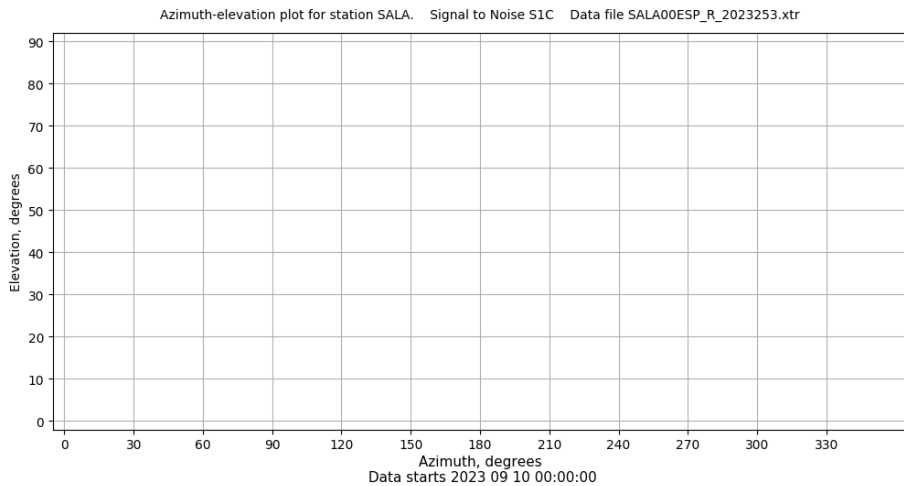
Control de calidad GNSS GAL diario

Estacion: SALA
 Fecha: 2023 09 10
 Dia del año: 253

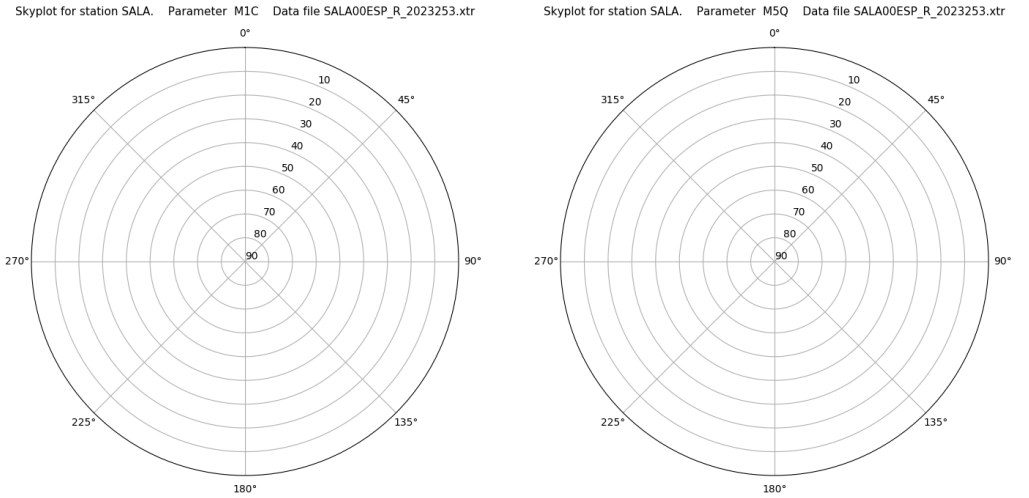
Señal-Ruido GAL E1 y E5



Azimut-Elevacion



Multipath GAL E1 y E5



Tiempo-Elevacion

