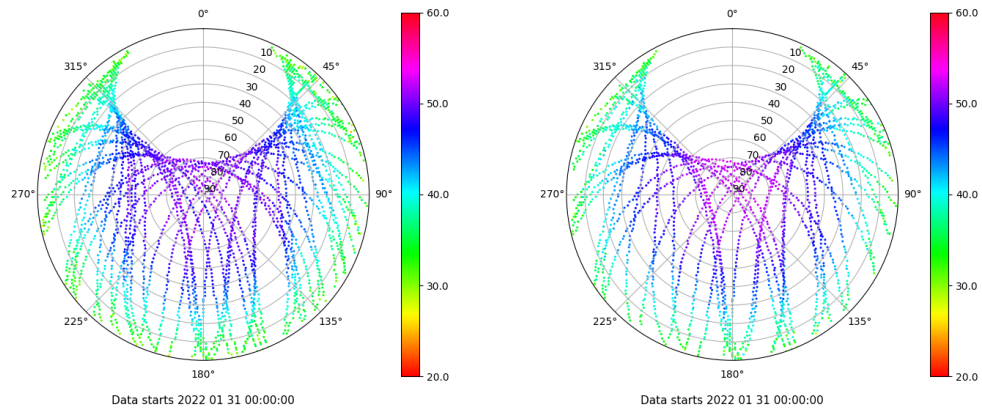


# Control de calidad GNSS GPS diario

Estacion: RODI  
 Fecha: 2022 01 31  
 Dia del año: 031

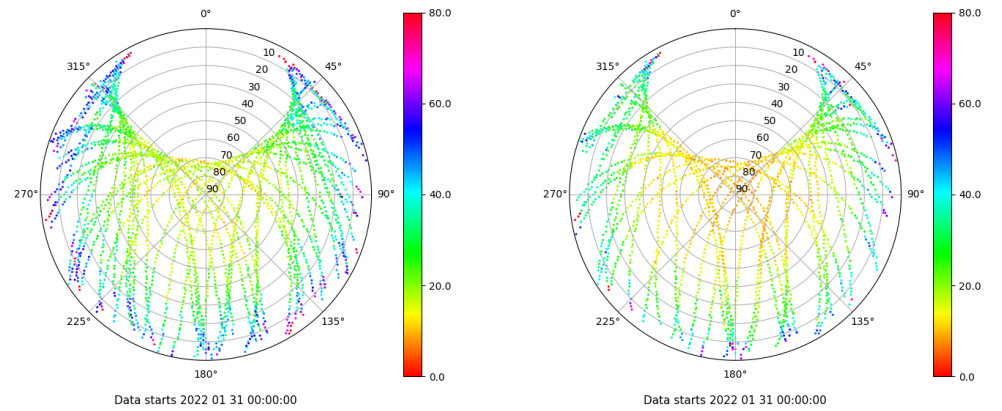
## Señal-Ruido GPS L1 y L2

Skyplot for station RODI. Signal to Noise S1C Data file RODI00ESP\_R\_2022031.xtr Skyplot for station RODI. Signal to Noise S2X Data file RODI00ESP\_R\_2022031.xtr



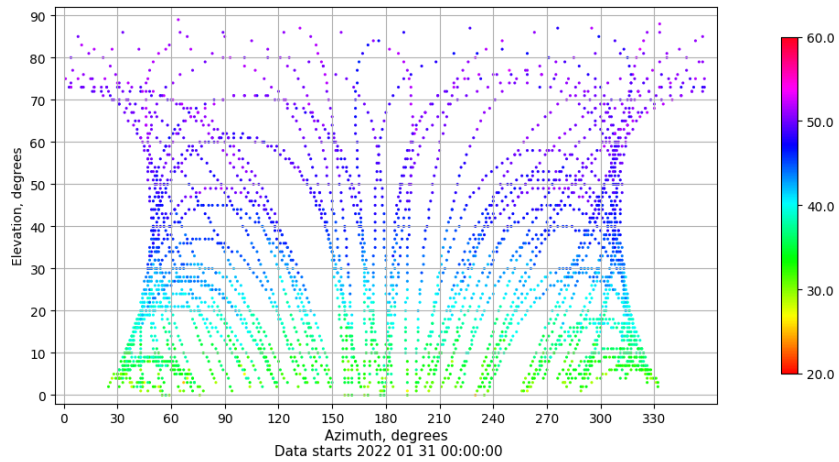
## Multipath GPS L1 y L2

Skyplot for station RODI. Parameter M1C Data file RODI00ESP\_R\_2022031.xtr Skyplot for station RODI. Parameter M2X Data file RODI00ESP\_R\_2022031.xtr



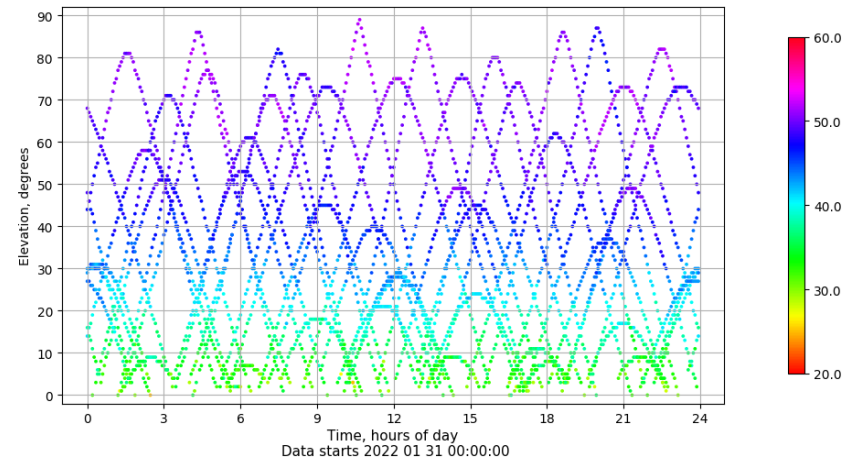
## Azimuth-Elevacion

Azimuth-elevation plot for station RODI. Signal to Noise S1C Data file RODI00ESP\_R\_2022031.xtr



## Tiempo-Elevacion

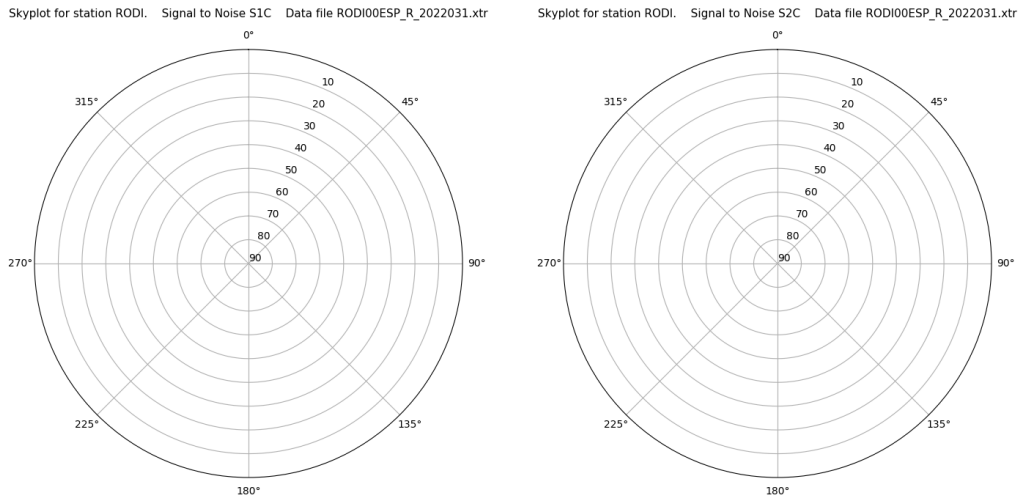
Time-elevation plot for station RODI. Signal to Noise S1C Data file RODI00ESP\_R\_2022031.xtr



# Control de calidad GNSS GLO diario

Estacion: RODI  
 Fecha: 2022 01 31  
 Dia del año: 031

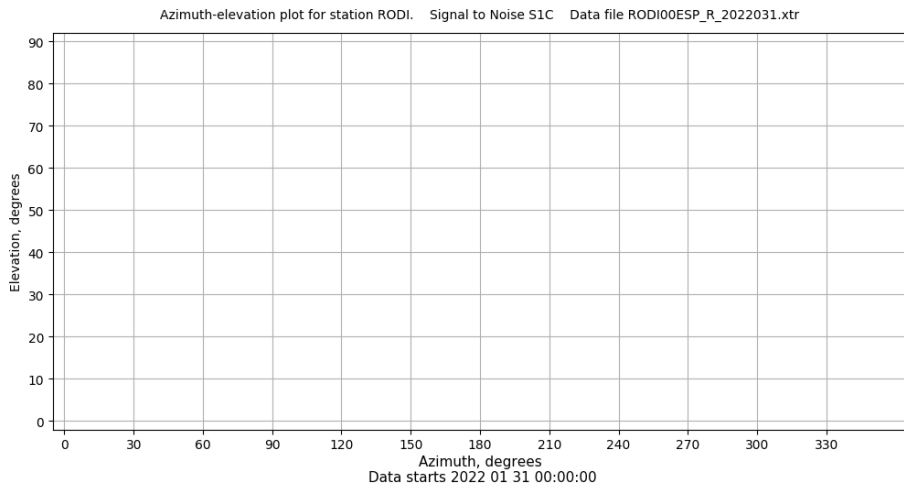
## Señal-Ruido GLO L1 y L2



Data starts 2022 01 31 00:00:00

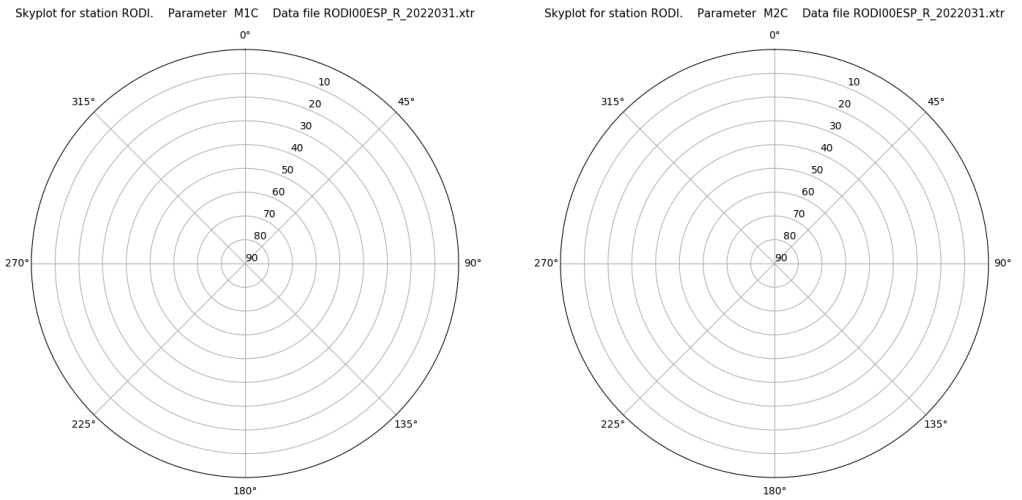
Data starts 2022 01 31 00:00:00

## Azimut-Elevacion



Data starts 2022 01 31 00:00:00

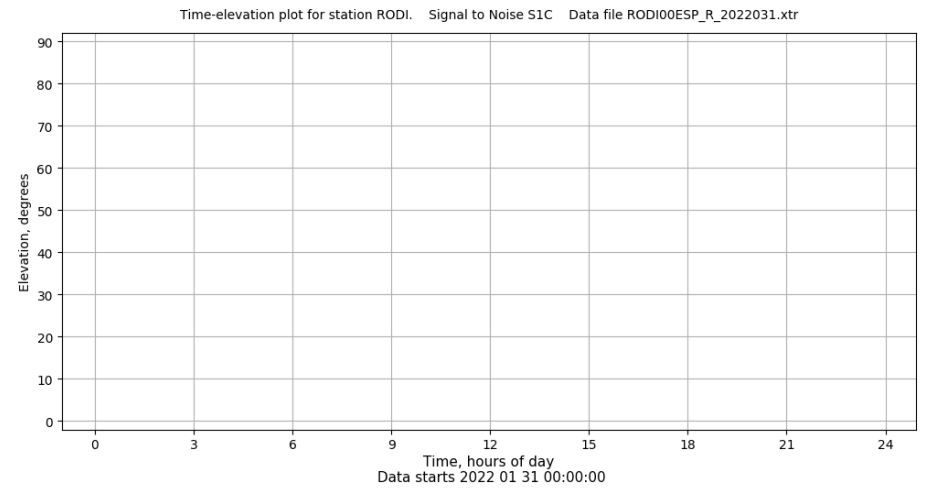
## Multipath GLO L1 y L2



Data starts 2022 01 31 00:00:00

Data starts 2022 01 31 00:00:00

## Tiempo-Elevacion



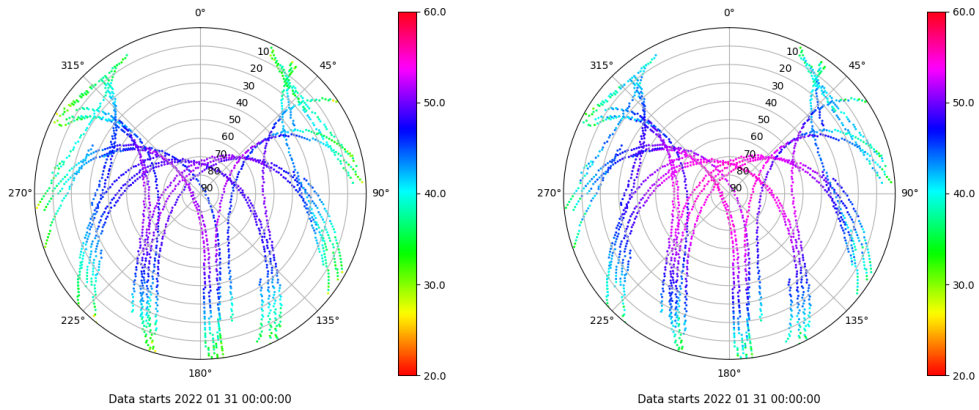
Data starts 2022 01 31 00:00:00

# Control de calidad GNSS GAL diario

Estacion: RODI  
 Fecha: 2022 01 31  
 Dia del año: 031

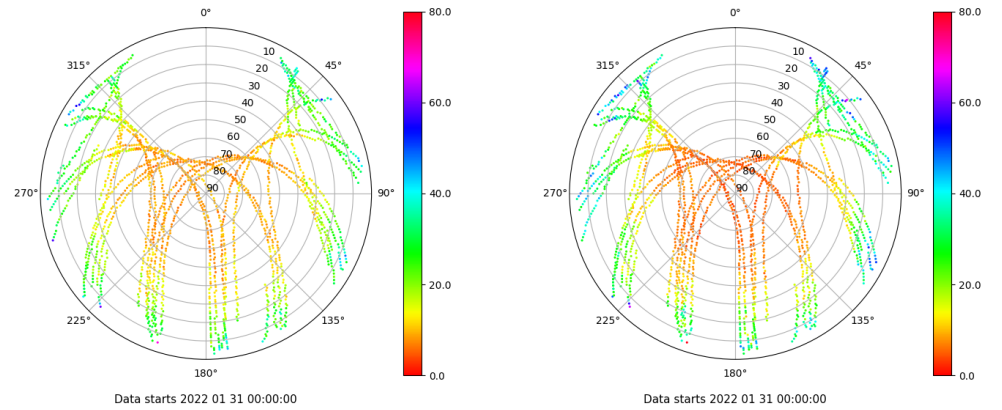
## Señal-Ruido GAL E1 y E5

Skyplot for station RODI. Signal to Noise S1X Data file RODI00ESP\_R\_2022031.xtr Skyplot for station RODI. Signal to Noise S5X Data file RODI00ESP\_R\_2022031.xtr



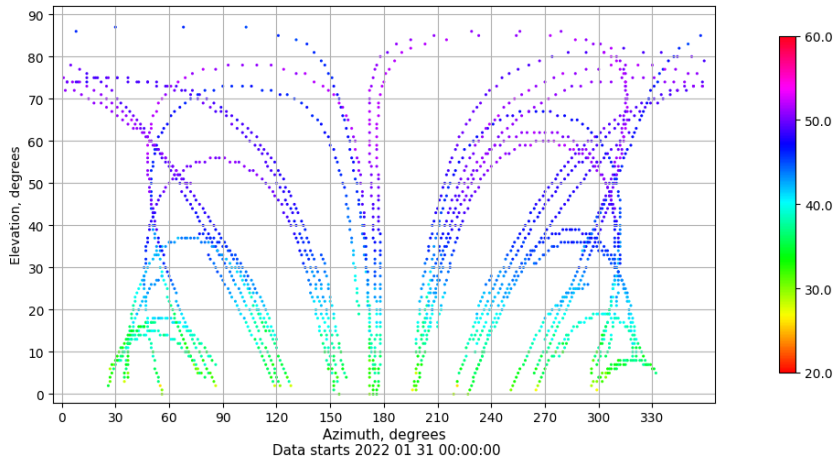
## Multipath GAL E1 y E5

Skyplot for station RODI. Parameter M1X Data file RODI00ESP\_R\_2022031.xtr Skyplot for station RODI. Parameter M5X Data file RODI00ESP\_R\_2022031.xtr



## Azimuth-Elevacion

Azimuth-elevation plot for station RODI. Signal to Noise S1X Data file RODI00ESP\_R\_2022031.xtr



## Tiempo-Elevacion

Time-elevation plot for station RODI. Signal to Noise S1X Data file RODI00ESP\_R\_2022031.xtr

