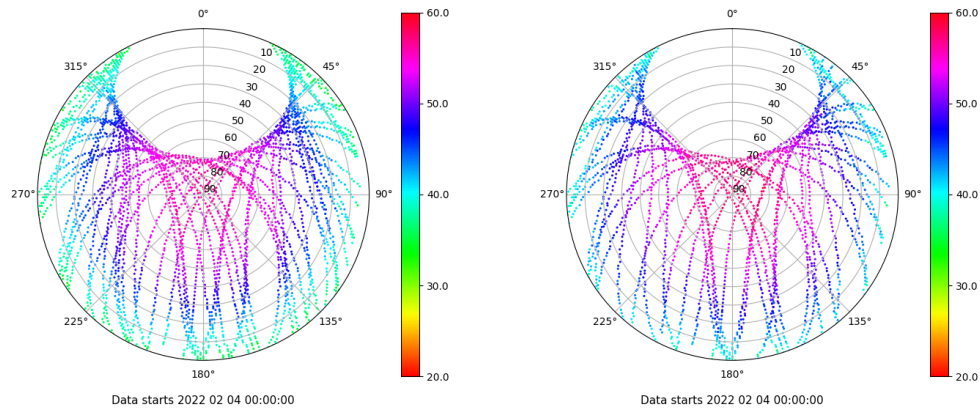


Control de calidad GNSS GPS diario

Estacion: PNAV
 Fecha: 2022 02 04
 Dia del año: 035

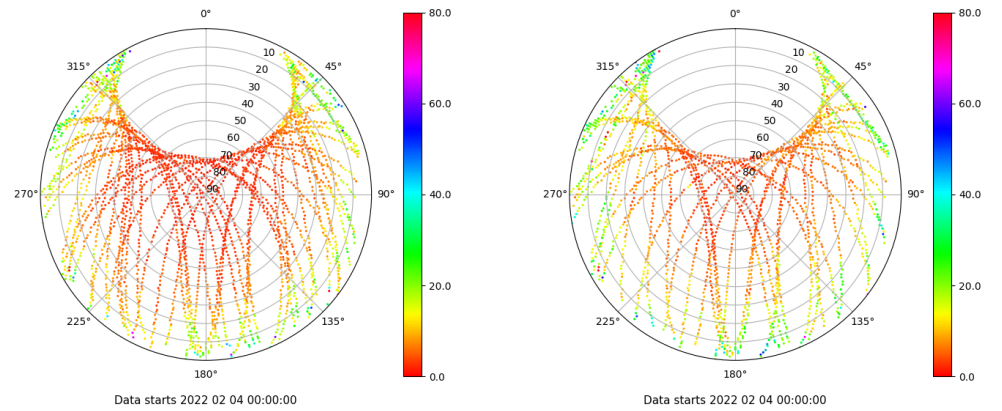
Señal-Ruido GPS L1 y L2

Skyplot for station PNAV. Signal to Noise S1C Data file PNAV00ESP_R_2022035.xtr Skyplot for station PNAV. Signal to Noise S2S Data file PNAV00ESP_R_2022035.xtr



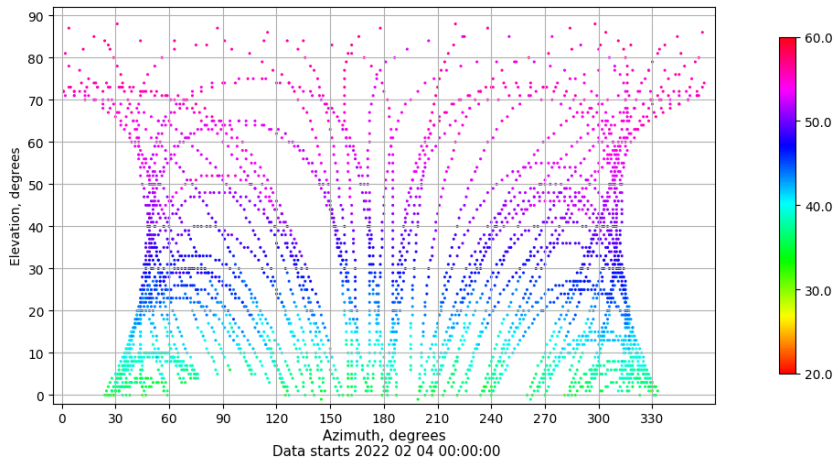
Multipath GPS L1 y L2

Skyplot for station PNAV. Parameter M1C Data file PNAV00ESP_R_2022035.xtr Skyplot for station PNAV. Parameter M2S Data file PNAV00ESP_R_2022035.xtr



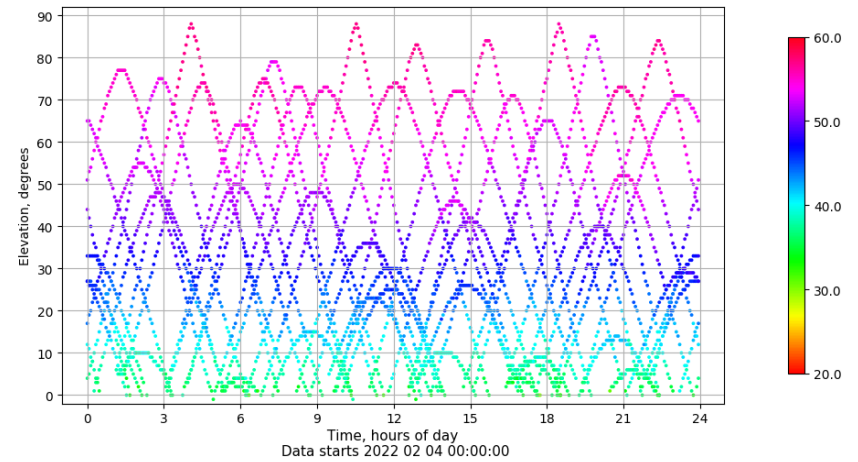
Azimuth-Elevacion

Azimuth-elevation plot for station PNAV. Signal to Noise S1C Data file PNAV00ESP_R_2022035.xtr



Tiempo-Elevacion

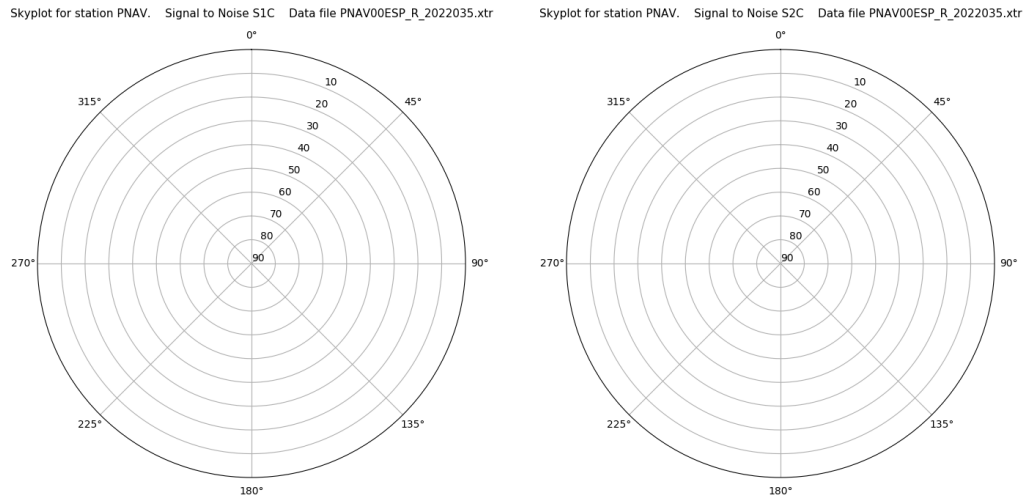
Time-elevation plot for station PNAV. Signal to Noise S1C Data file PNAV00ESP_R_2022035.xtr



Control de calidad GNSS GLO diario

Estacion: PNAV
 Fecha: 2022 02 04
 Dia del año: 035

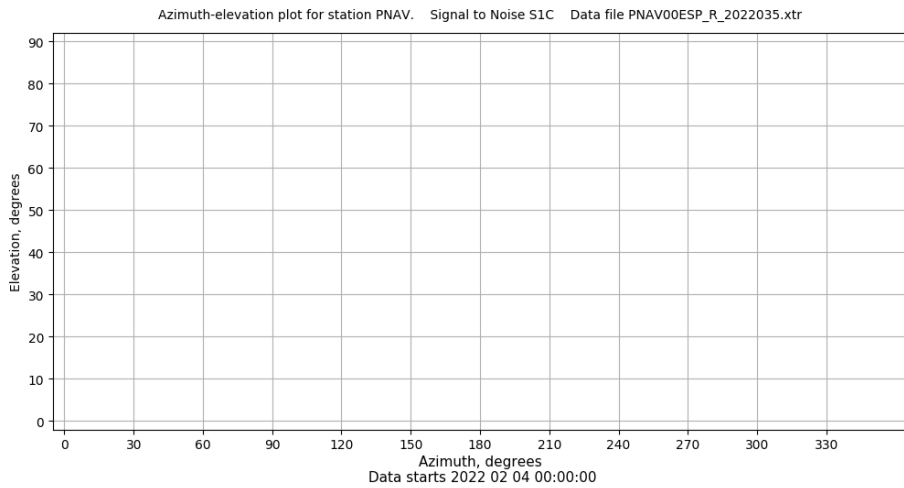
Señal-Ruido GLO L1 y L2



Data starts 2022 02 04 00:00:00

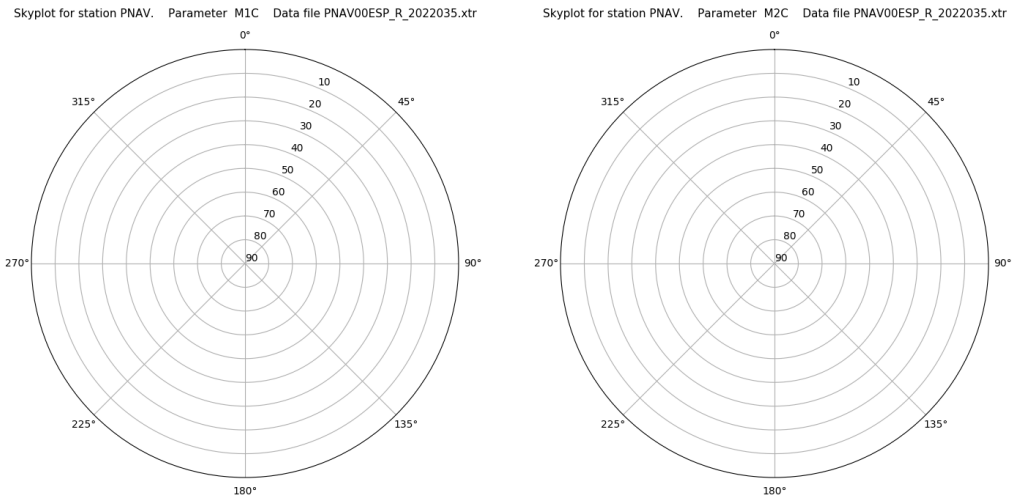
Data starts 2022 02 04 00:00:00

Azimut-Elevacion



Data starts 2022 02 04 00:00:00

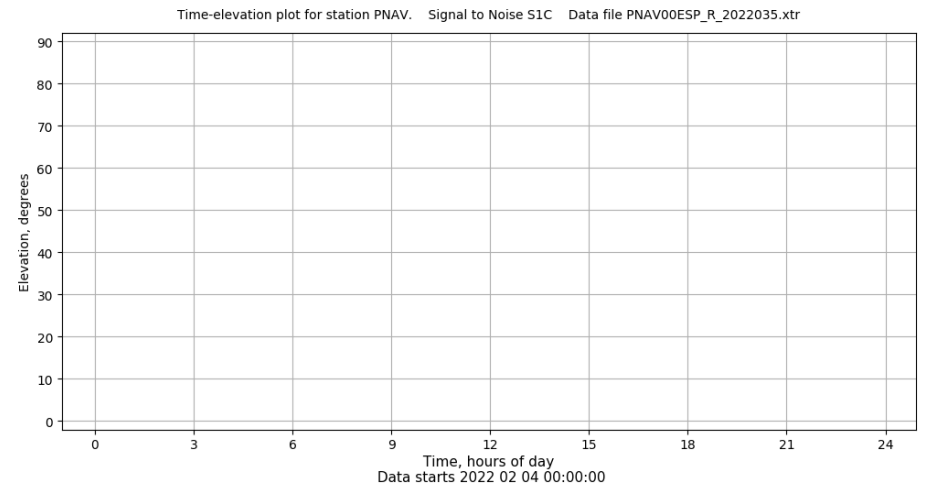
Multipath GLO L1 y L2



Data starts 2022 02 04 00:00:00

Data starts 2022 02 04 00:00:00

Tiempo-Elevacion



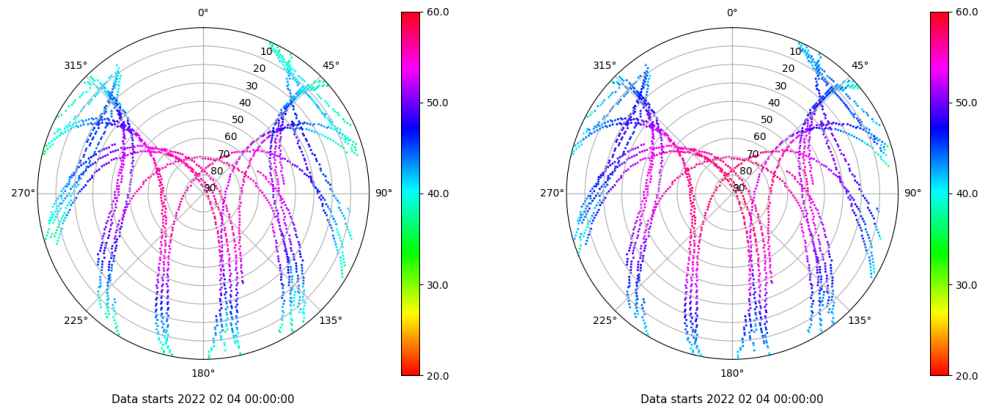
Data starts 2022 02 04 00:00:00

Control de calidad GNSS GAL diario

Estacion: PNAV
 Fecha: 2022 02 04
 Día del año: 035

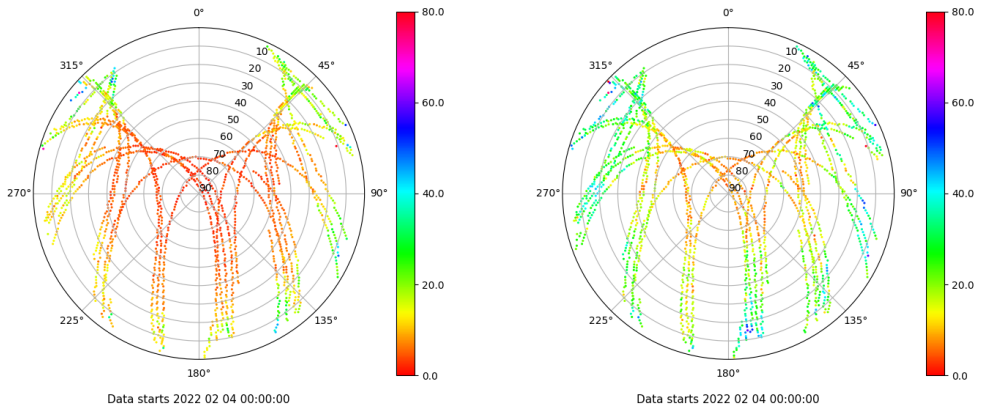
Señal-Ruido GAL E1 y E5

Skyplot for station PNAV. Signal to Noise S1C Data file PNAV00ESP_R_2022035.xtr Skyplot for station PNAV. Signal to Noise S5Q Data file PNAV00ESP_R_2022035.xtr



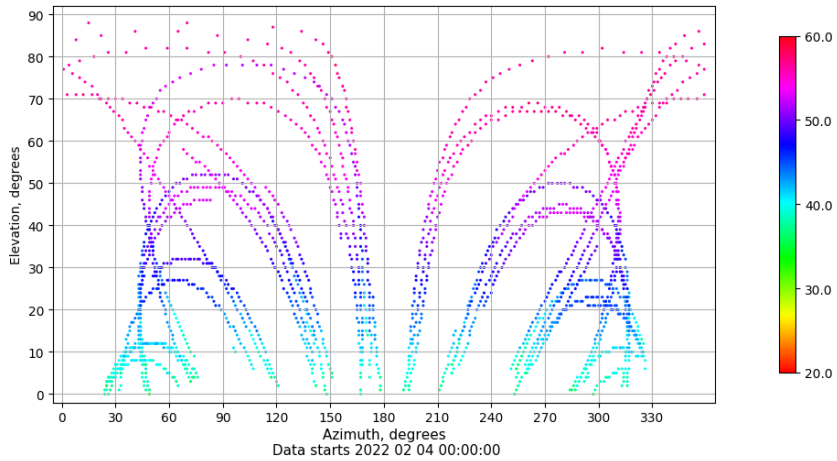
Multipath GAL E1 y E5

Skyplot for station PNAV. Parameter M1C Data file PNAV00ESP_R_2022035.xtr Skyplot for station PNAV. Parameter M5Q Data file PNAV00ESP_R_2022035.xtr



Azimuth-Elevacion

Azimuth-elevation plot for station PNAV. Signal to Noise S1C Data file PNAV00ESP_R_2022035.xtr



Tiempo-Elevacion

Time-elevation plot for station PNAV. Signal to Noise S1C Data file PNAV00ESP_R_2022035.xtr

