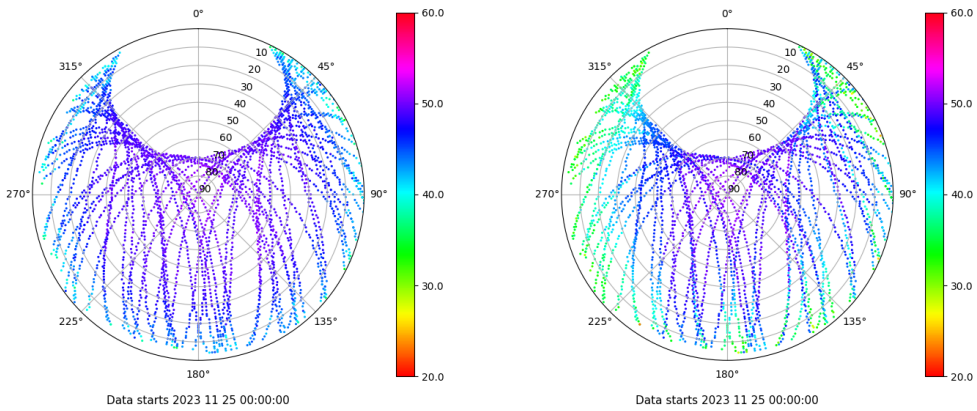


Control de calidad GNSS GPS diario

Estacion: PENI
 Fecha: 2023 11 25
 Dia del año: 329

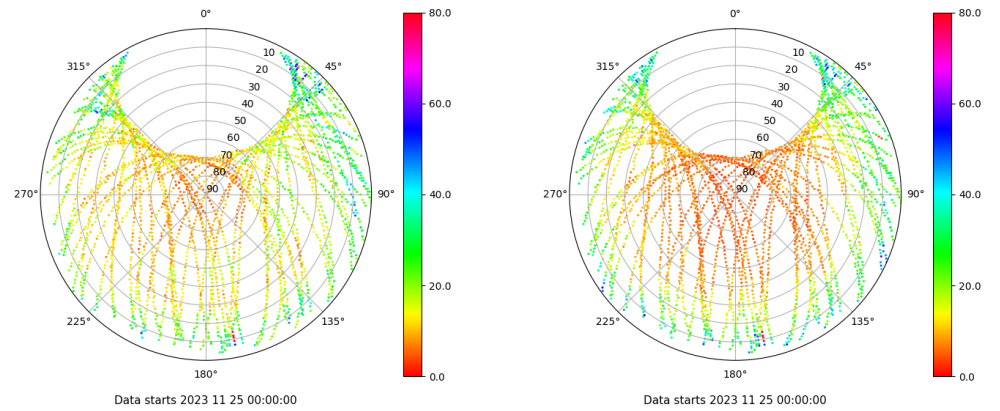
Señal-Ruido GPS L1 y L2

Skyplot for station PENI. Signal to Noise S1C Data file PENI00ESP_R_2023329.xtr Skyplot for station PENI. Signal to Noise S2W Data file PENI00ESP_R_2023329.xtr



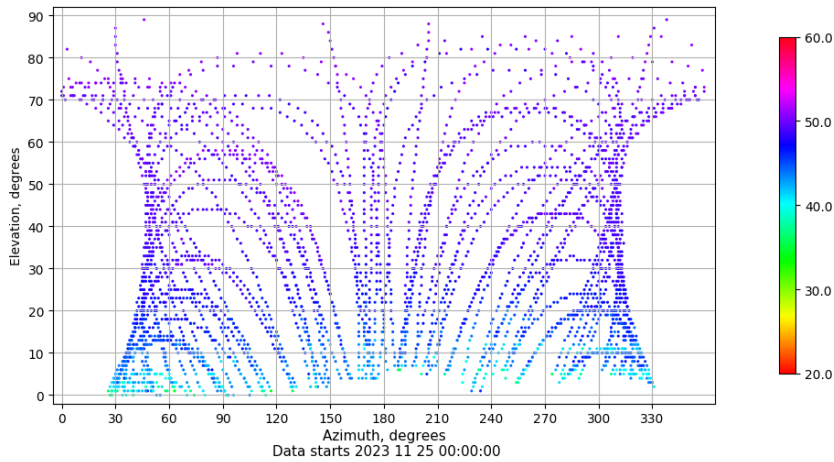
Multipath GPS L1 y L2

Skyplot for station PENI. Parameter M1C Data file PENI00ESP_R_2023329.xtr Skyplot for station PENI. Parameter M2W Data file PENI00ESP_R_2023329.xtr



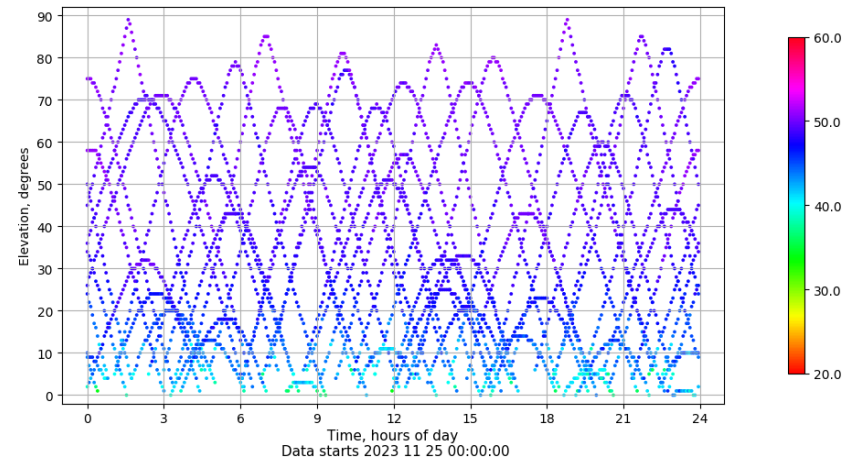
Azimuth-Elevacion

Azimuth-elevation plot for station PENI. Signal to Noise S1C Data file PENI00ESP_R_2023329.xtr



Tiempo-Elevacion

Time-elevation plot for station PENI. Signal to Noise S1C Data file PENI00ESP_R_2023329.xtr

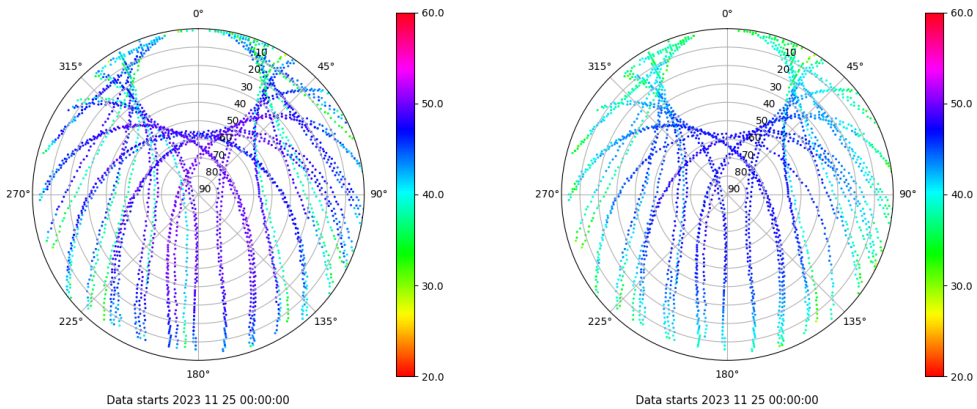


Control de calidad GNSS GLO diario

Estacion: PENI
Fecha: 2023 11 25
Dia del año: 329

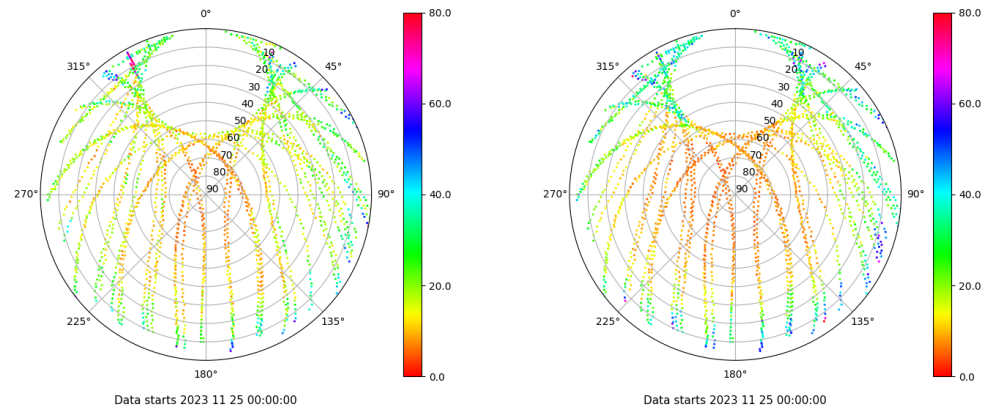
Señal-Ruido GLO L1 y L2

Skyplot for station PENI. Signal to Noise S1C Data file PENI00ESP_R_2023329.xtr Skyplot for station PENI. Signal to Noise S2P Data file PENI00ESP_R_2023329.xtr



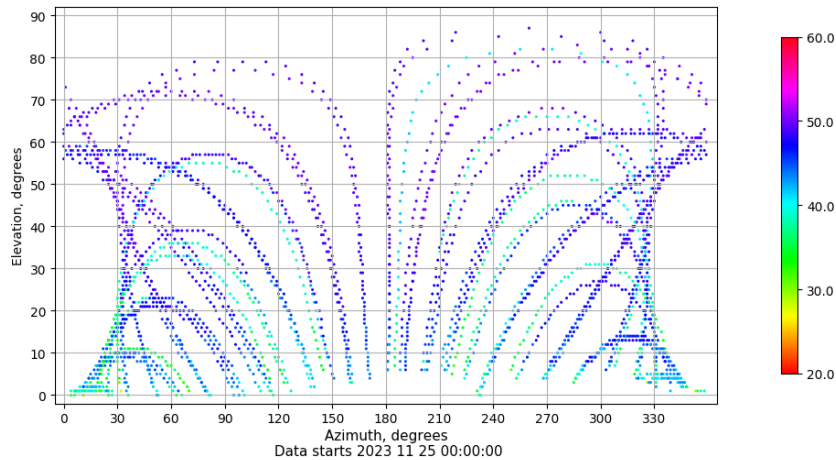
Multipath GLO L1 y L2

Skyplot for station PENI. Parameter M1C Data file PENI00ESP_R_2023329.xtr Skyplot for station PENI. Parameter M2P Data file PENI00ESP_R_2023329.xtr



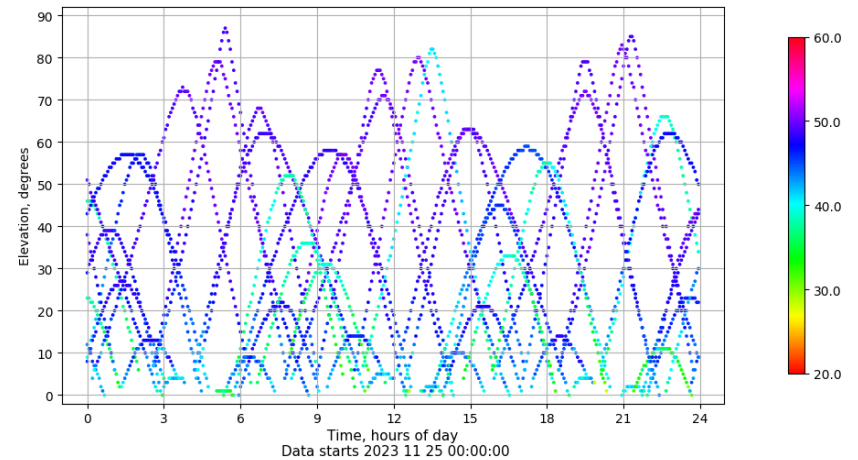
Azimuth-Elevacion

Azimuth-elevation plot for station PENI. Signal to Noise S1C Data file PENI00ESP_R_2023329.xtr



Tiempo-Elevacion

Time-elevation plot for station PENI. Signal to Noise S1C Data file PENI00ESP_R_2023329.xtr

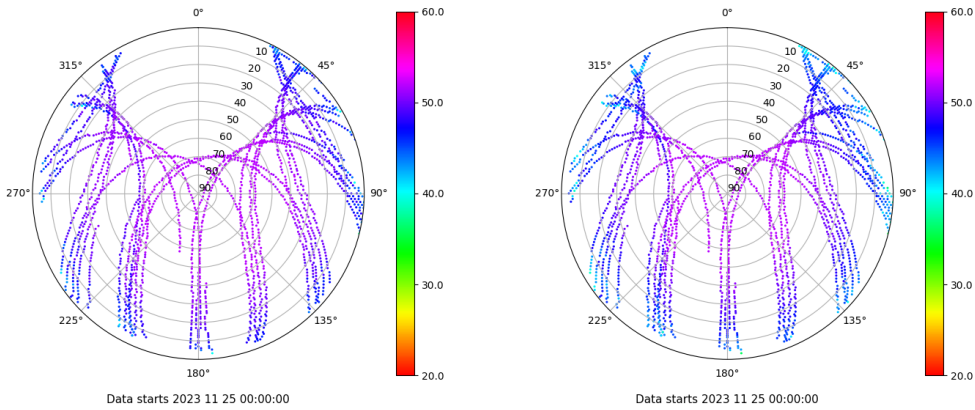


Control de calidad GNSS GAL diario

Estacion: PENI
 Fecha: 2023 11 25
 Dia del año: 329

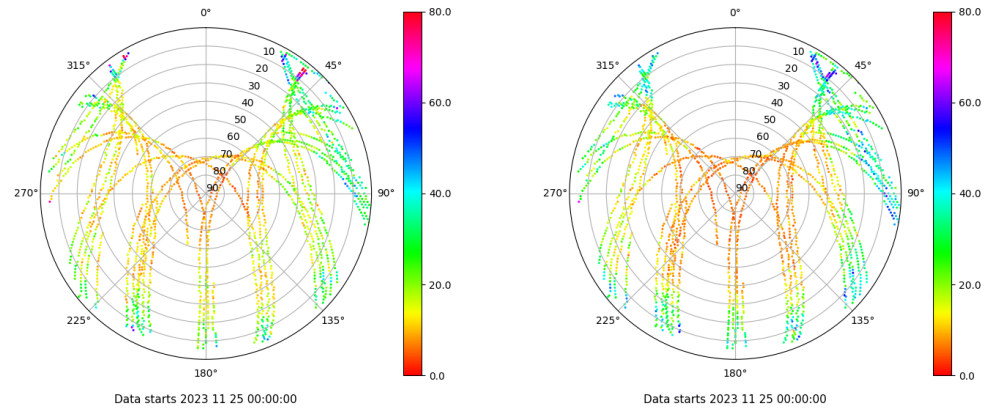
Señal-Ruido GAL E1 y E5

Skyplot for station PENI. Signal to Noise S1C Data file PENI00ESP_R_2023329.xtr Skyplot for station PENI. Signal to Noise S5Q Data file PENI00ESP_R_2023329.xtr



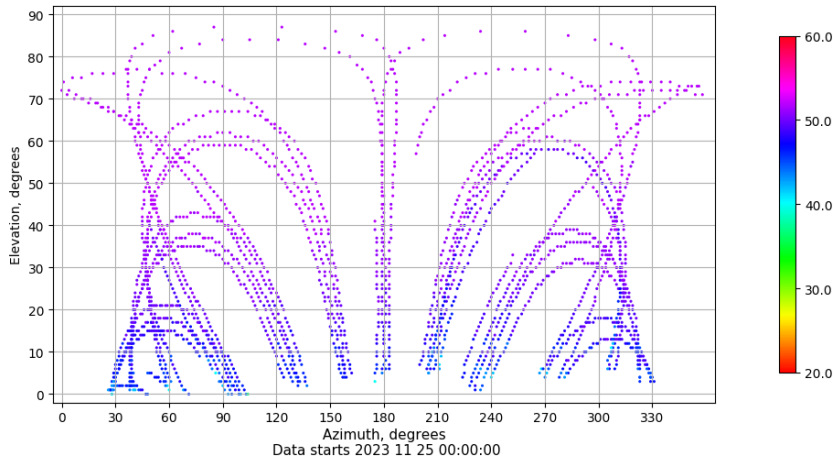
Multipath GAL E1 y E5

Skyplot for station PENI. Parameter M1C Data file PENI00ESP_R_2023329.xtr Skyplot for station PENI. Parameter M5Q Data file PENI00ESP_R_2023329.xtr



Azimuth-Elevacion

Azimuth-elevation plot for station PENI. Signal to Noise S1C Data file PENI00ESP_R_2023329.xtr



Tiempo-Elevacion

Time-elevation plot for station PENI. Signal to Noise S1C Data file PENI00ESP_R_2023329.xtr

