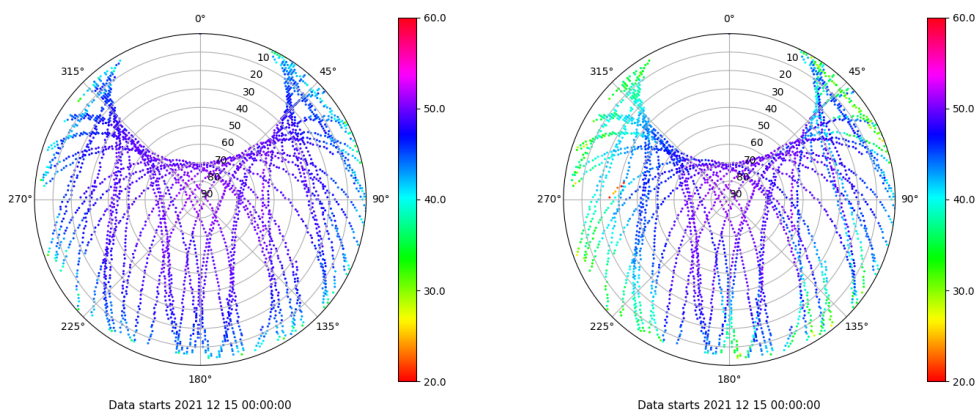


# Control de calidad GNSS GPS diario

Estacion: PENI  
Fecha: 2021 12 15  
Dia del año: 349

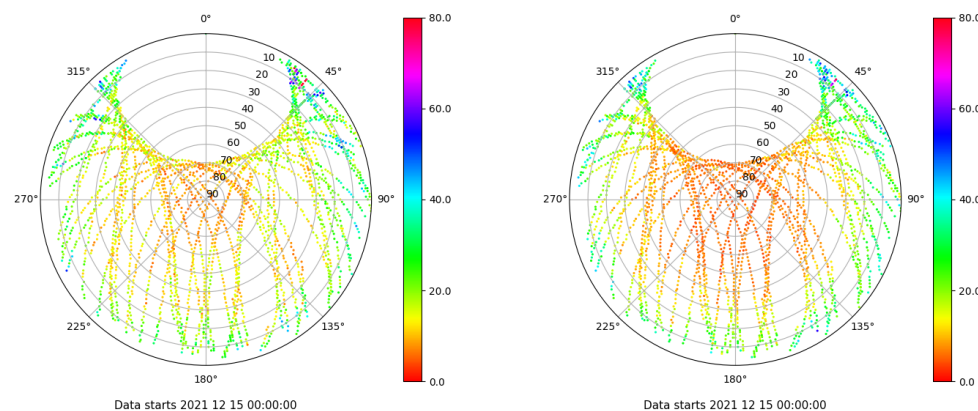
## Señal-Ruido GPS L1 y L2

Skyplot for station PENI. Signal to Noise S1C Data file PENI00ESP\_R\_2021349.xtr Skyplot for station PENI. Signal to Noise S2W Data file PENI00ESP\_R\_2021349.xtr



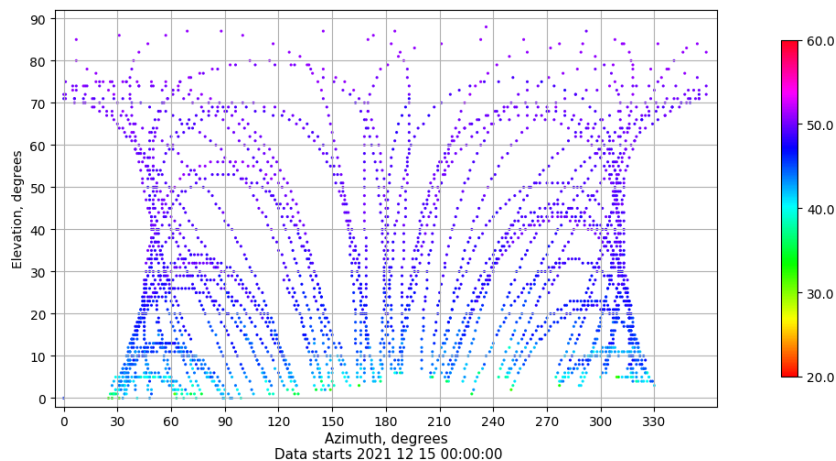
## Multipath GPS L1 y L2

Skyplot for station PENI. Parameter M1C Data file PENI00ESP\_R\_2021349.xtr Skyplot for station PENI. Parameter M2W Data file PENI00ESP\_R\_2021349.xtr



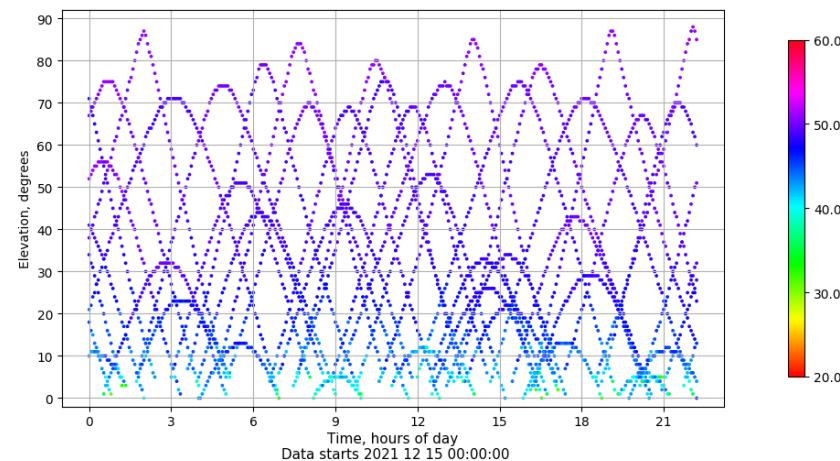
## Azimut-Elevacion

Azimuth-elevation plot for station PENI. Signal to Noise S1C Data file PENI00ESP\_R\_2021349.xtr



## Tiempo-Elevacion

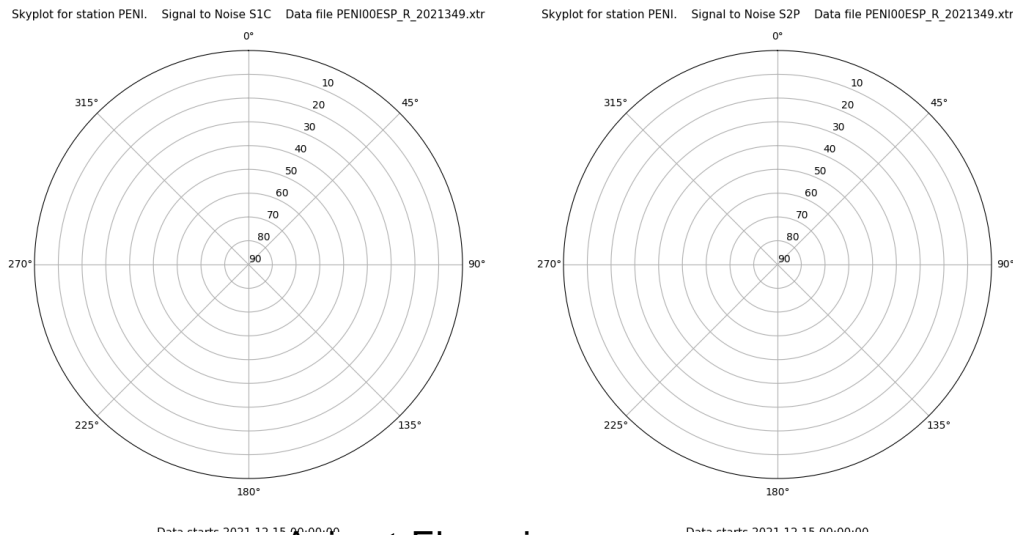
Time-elevation plot for station PENI. Signal to Noise S1C Data file PENI00ESP\_R\_2021349.xtr



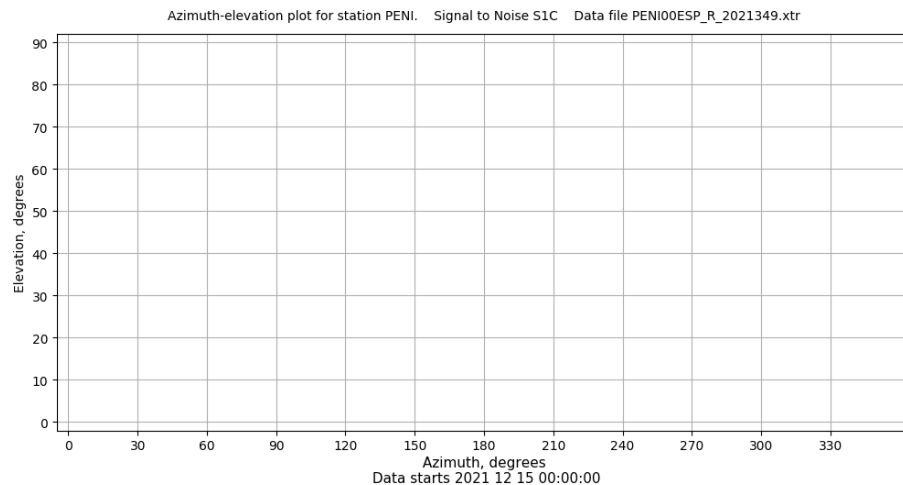
# Control de calidad GNSS GLO diario

Estacion: PENI  
Fecha: 2021 12 15  
Dia del año: 349

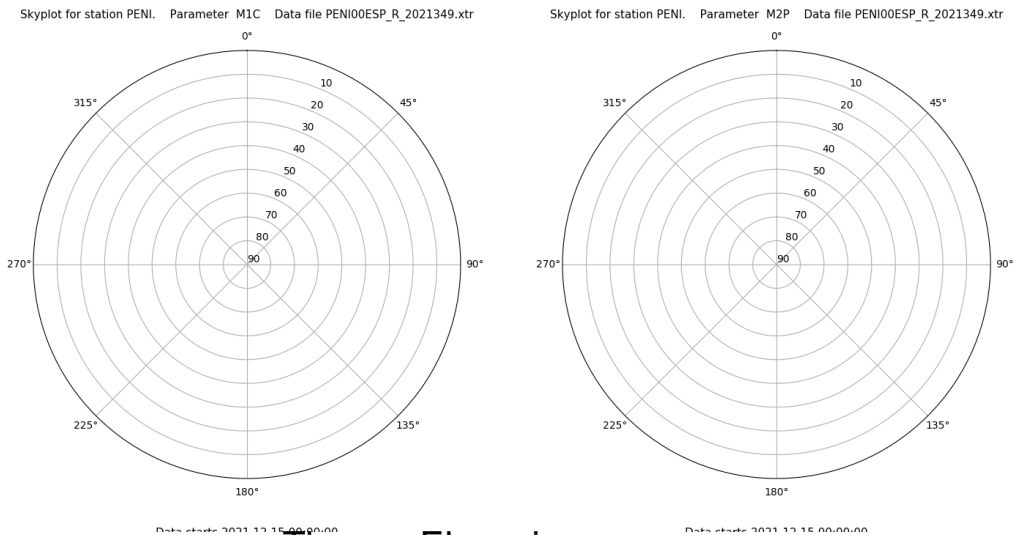
## Señal-Ruido GLO L1 y L2



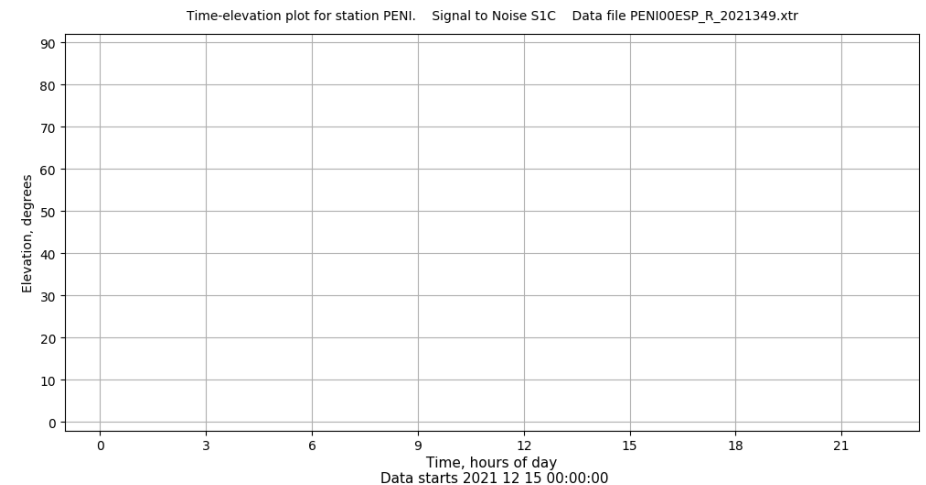
## Azimut-Elevacion



## Multipath GLO L1 y L2



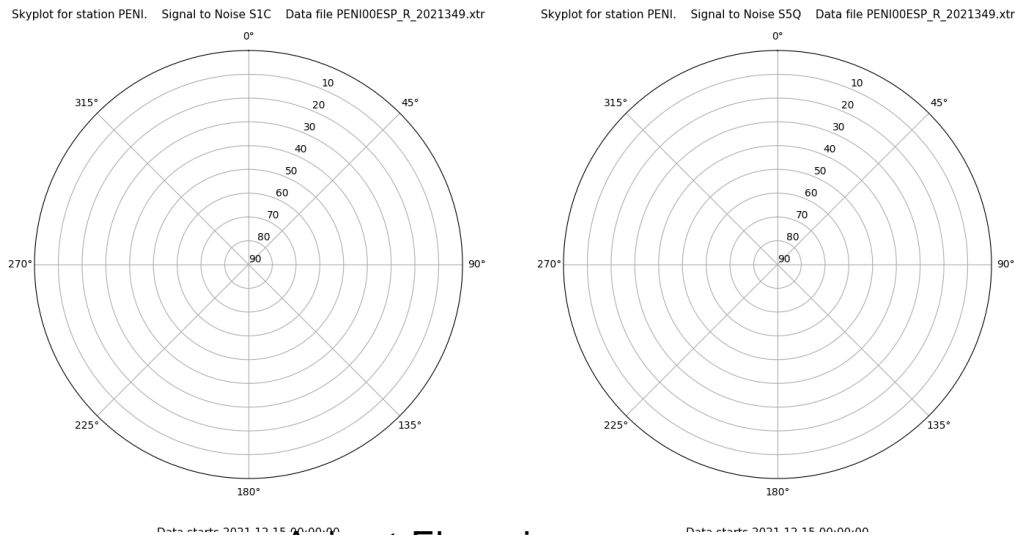
## Tiempo-Elevacion



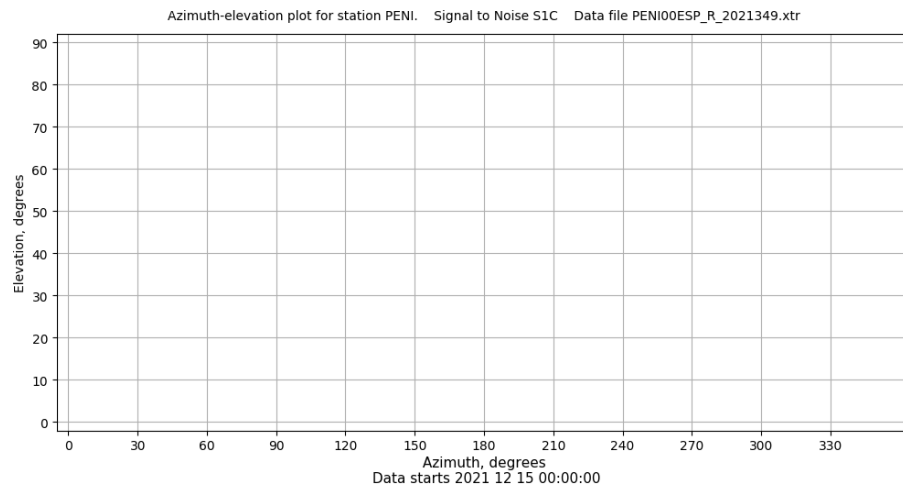
# Control de calidad GNSS GAL diario

Estacion: PENI  
Fecha: 2021 12 15  
Dia del año: 349

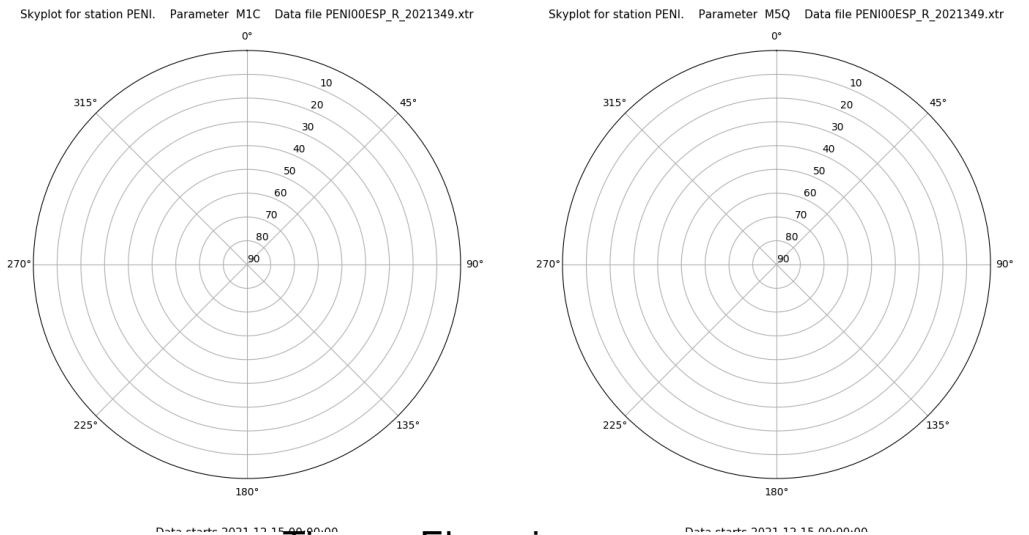
## Señal-Ruido GAL E1 y E5



## Azimut-Elevacion



## Multipath GAL E1 y E5



## Tiempo-Elevacion

