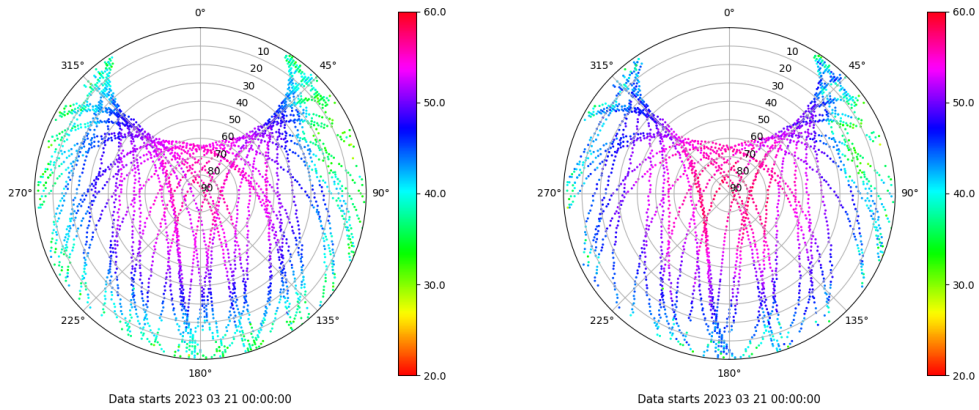


# Control de calidad GNSS GPS diario

Estacion: MLLL  
 Fecha: 2023 03 21  
 Dia del año: 080

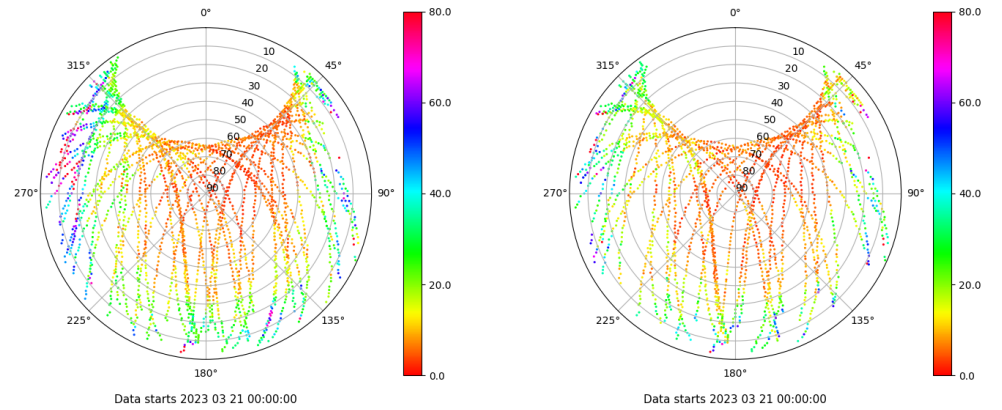
## Señal-Ruido GPS L1 y L2

Skyplot for station MLLL. Signal to Noise S1C Data file MLLL00ESP\_R\_2023080.xtr Skyplot for station MLLL. Signal to Noise S2S Data file MLLL00ESP\_R\_2023080.xtr



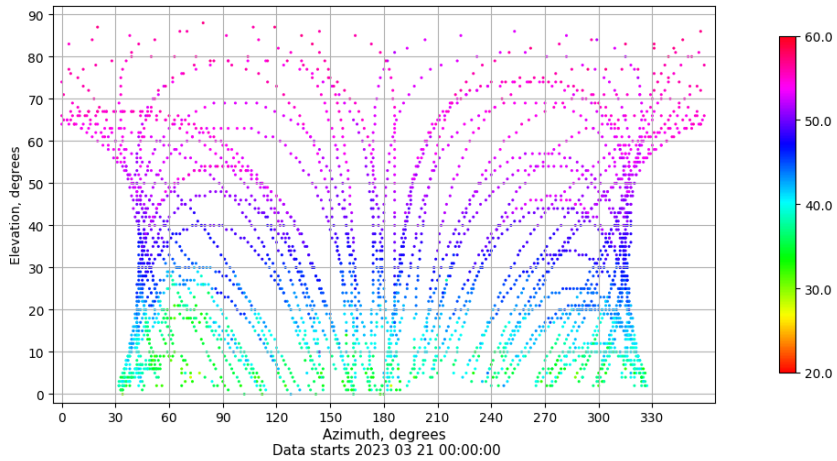
## Multipath GPS L1 y L2

Skyplot for station MLLL. Parameter M1C Data file MLLL00ESP\_R\_2023080.xtr Skyplot for station MLLL. Parameter M2S Data file MLLL00ESP\_R\_2023080.xtr



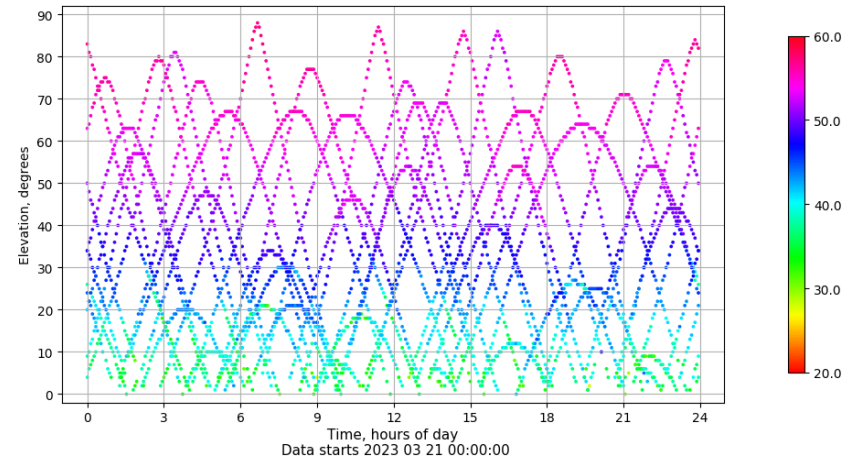
## Azimuth-Elevacion

Azimuth-elevation plot for station MLLL. Signal to Noise S1C Data file MLLL00ESP\_R\_2023080.xtr



## Tiempo-Elevacion

Time-elevation plot for station MLLL. Signal to Noise S1C Data file MLLL00ESP\_R\_2023080.xtr

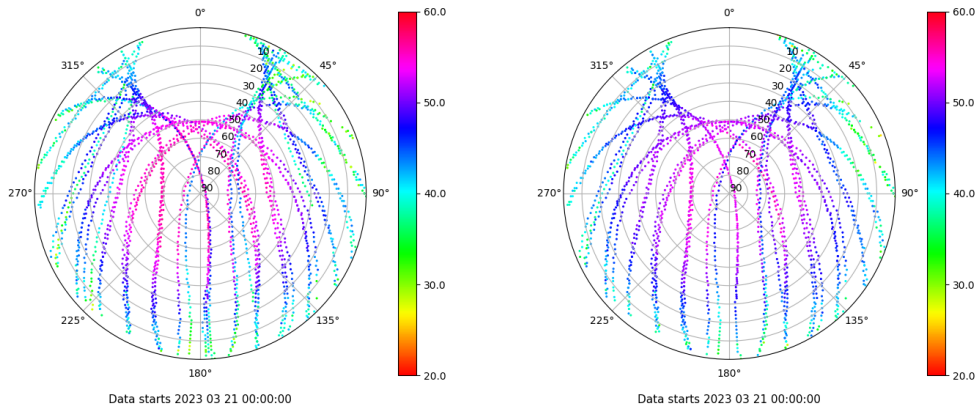


# Control de calidad GNSS GLO diario

Estacion: MLLL  
 Fecha: 2023 03 21  
 Dia del año: 080

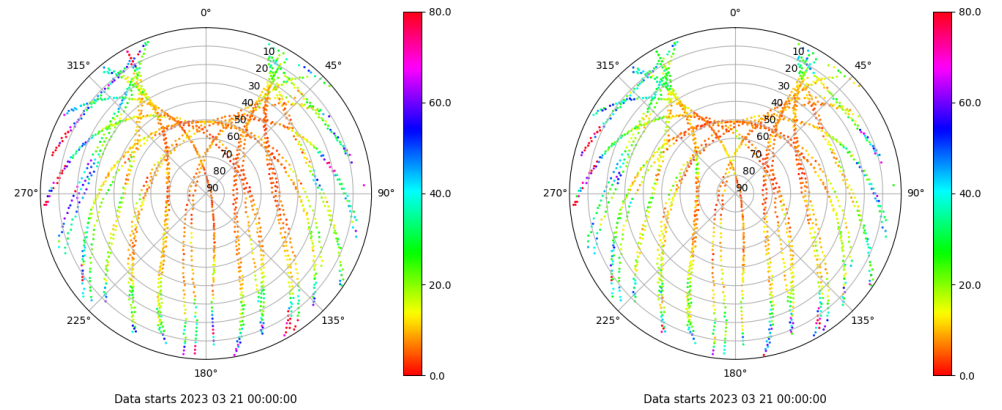
## Señal-Ruido GLO L1 y L2

Skyplot for station MLLL. Signal to Noise S1C Data file MLLL00ESP\_R\_2023080.xtr Skyplot for station MLLL. Signal to Noise S2C Data file MLLL00ESP\_R\_2023080.xtr



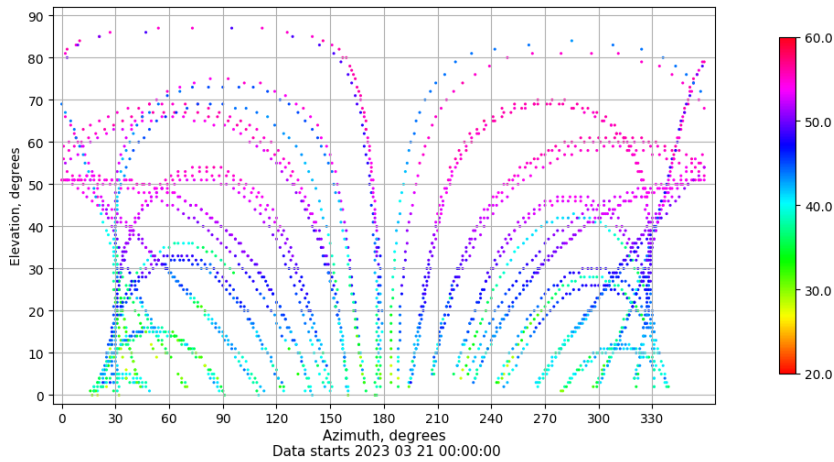
## Multipath GLO L1 y L2

Skyplot for station MLLL. Parameter M1C Data file MLLL00ESP\_R\_2023080.xtr Skyplot for station MLLL. Parameter M2C Data file MLLL00ESP\_R\_2023080.xtr



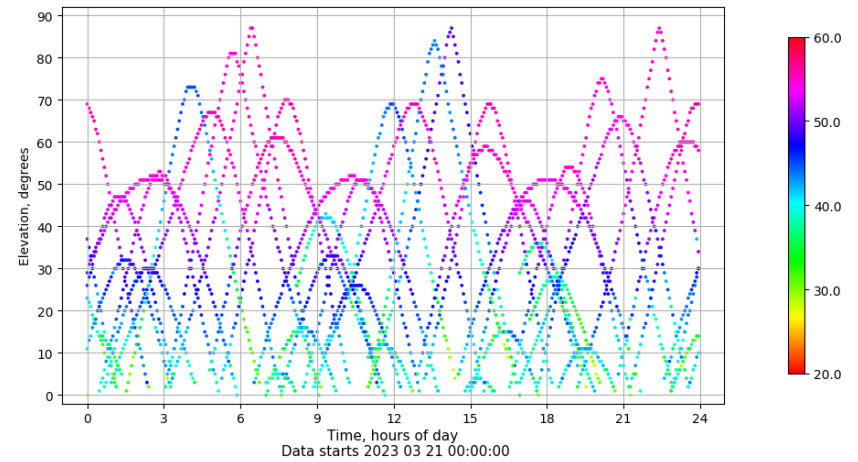
## Azimuth-Elevacion

Azimuth-elevation plot for station MLLL. Signal to Noise S1C Data file MLLL00ESP\_R\_2023080.xtr



## Tiempo-Elevacion

Time-elevation plot for station MLLL. Signal to Noise S1C Data file MLLL00ESP\_R\_2023080.xtr

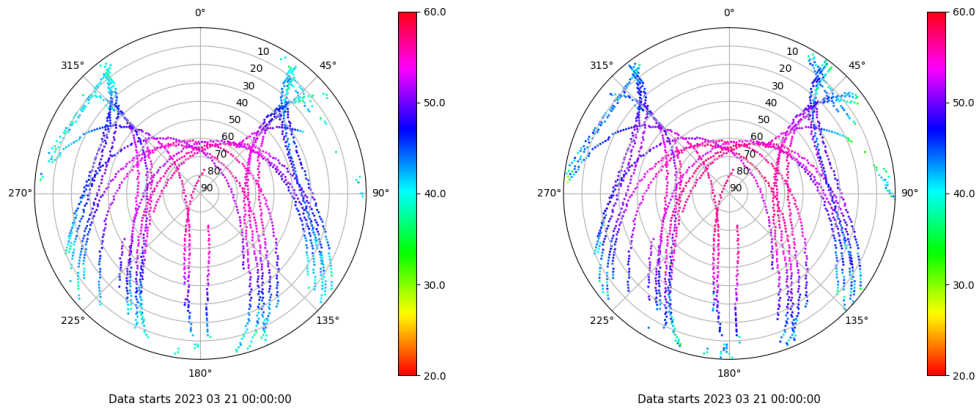


# Control de calidad GNSS GAL diario

Estacion: MLLL  
 Fecha: 2023 03 21  
 Dia del año: 080

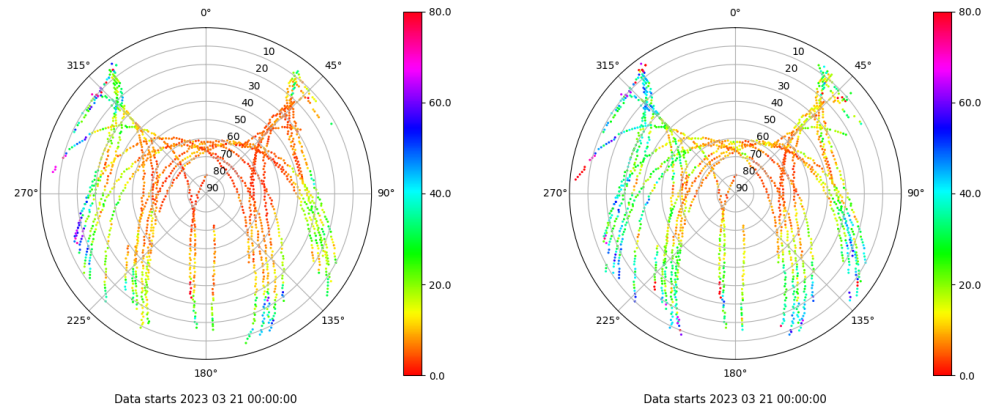
## Señal-Ruido GAL E1 y E5

Skyplot for station MLLL. Signal to Noise S1C Data file MLLL00ESP\_R\_2023080.xtr Skyplot for station MLLL. Signal to Noise S5Q Data file MLLL00ESP\_R\_2023080.xtr



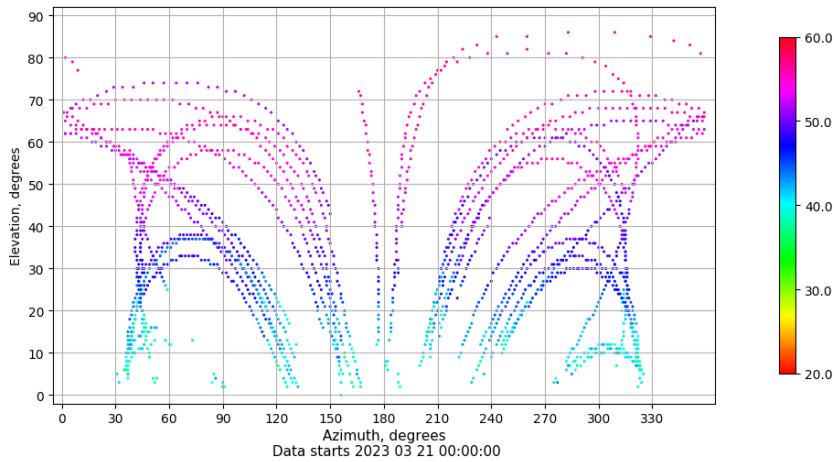
## Multipath GAL E1 y E5

Skyplot for station MLLL. Parameter M1C Data file MLLL00ESP\_R\_2023080.xtr Skyplot for station MLLL. Parameter M5Q Data file MLLL00ESP\_R\_2023080.xtr



## Azimuth-Elevacion

Azimuth-elevation plot for station MLLL. Signal to Noise S1C Data file MLLL00ESP\_R\_2023080.xtr



## Tiempo-Elevacion

Time-elevation plot for station MLLL. Signal to Noise S1C Data file MLLL00ESP\_R\_2023080.xtr

