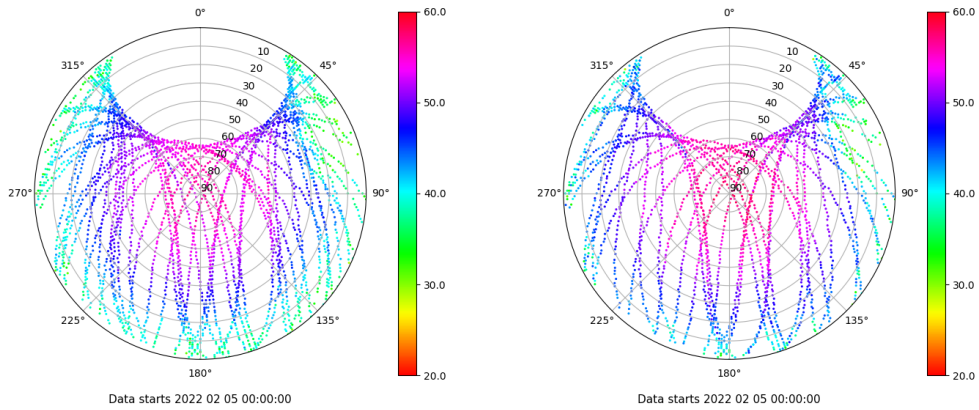


Control de calidad GNSS GPS diario

Estacion: MLLL
 Fecha: 2022 02 05
 Dia del año: 036

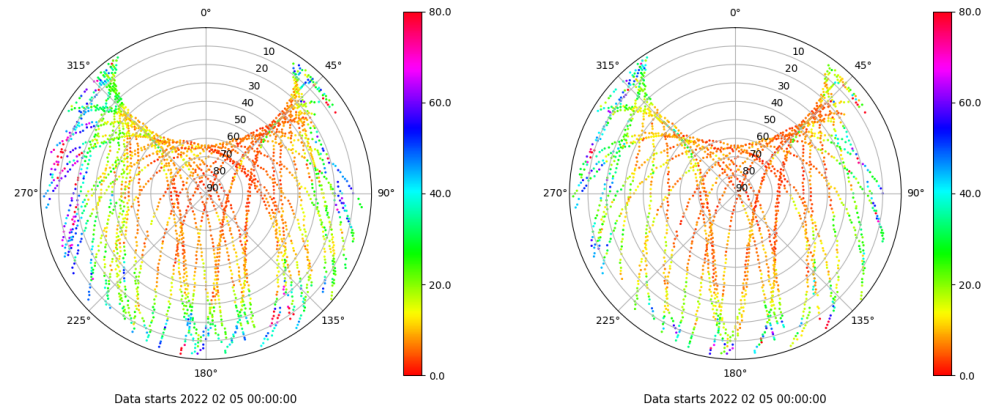
Señal-Ruido GPS L1 y L2

Skyplot for station MLLL. Signal to Noise S1C Data file MLLL00ESP_R_2022036.xtr Skyplot for station MLLL. Signal to Noise S2S Data file MLLL00ESP_R_2022036.xtr



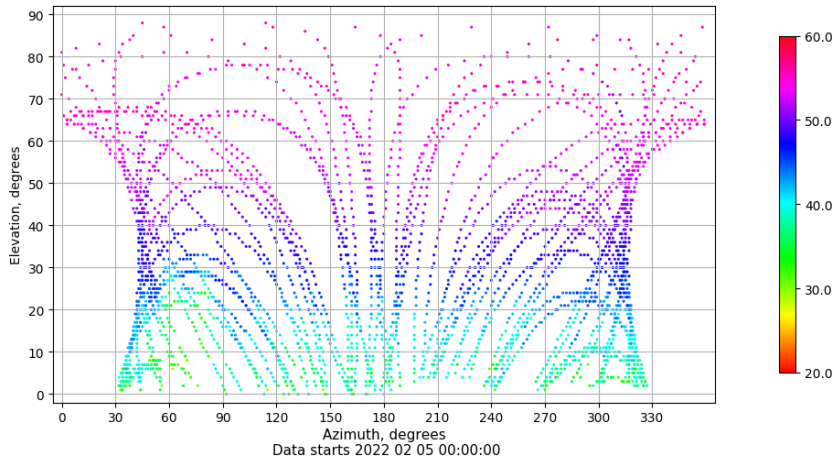
Multipath GPS L1 y L2

Skyplot for station MLLL. Parameter M1C Data file MLLL00ESP_R_2022036.xtr Skyplot for station MLLL. Parameter M2S Data file MLLL00ESP_R_2022036.xtr



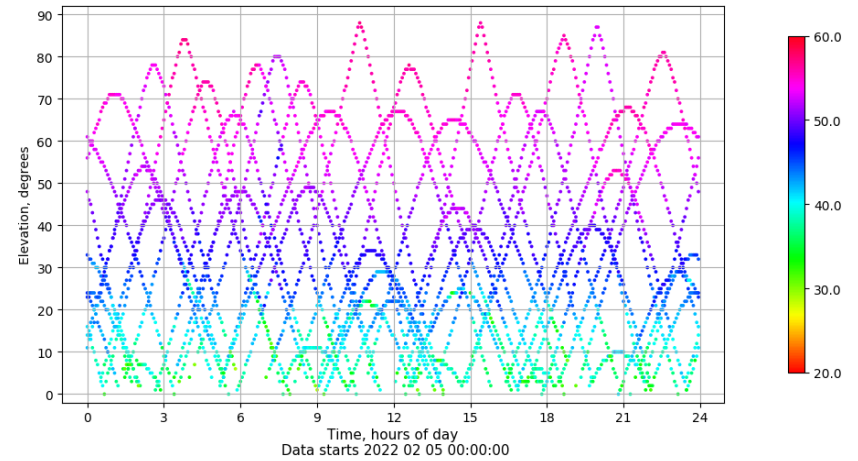
Azimut-Elevacion

Azimuth-elevation plot for station MLLL. Signal to Noise S1C Data file MLLL00ESP_R_2022036.xtr



Tiempo-Elevacion

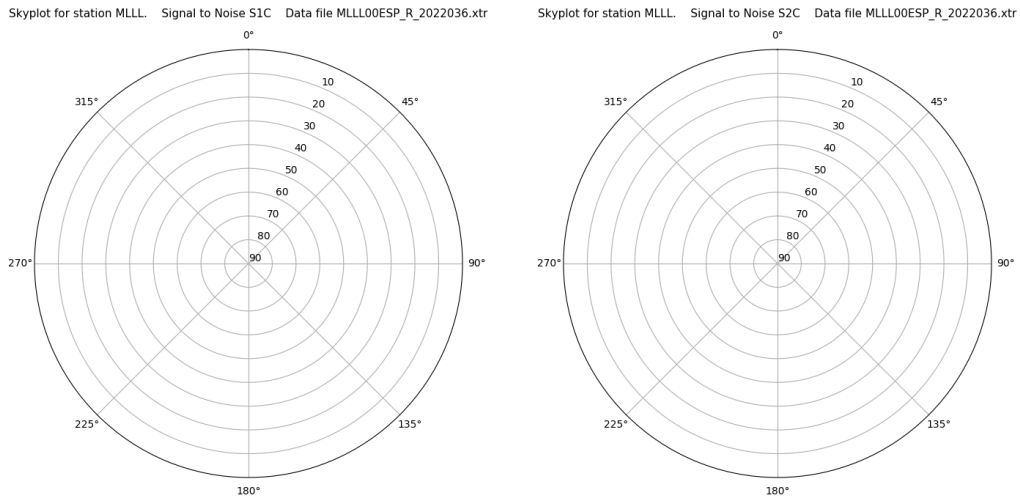
Time-elevation plot for station MLLL. Signal to Noise S1C Data file MLLL00ESP_R_2022036.xtr



Control de calidad GNSS GLO diario

Estacion: MLLL
 Fecha: 2022 02 05
 Dia del año: 036

Señal-Ruido GLO L1 y L2



Data starts 2022 02 05 00:00:00

Data starts 2022 02 05 00:00:00

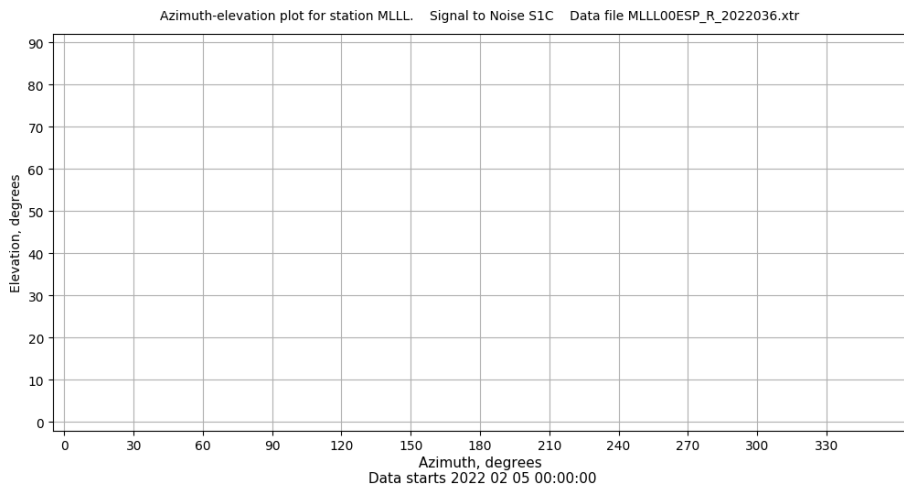
Multipath GLO L1 y L2



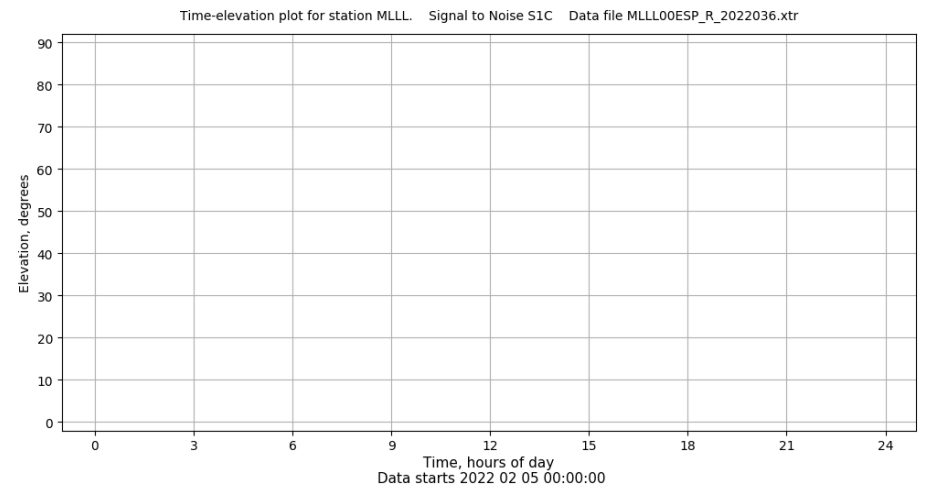
Data starts 2022 02 05 00:00:00

Data starts 2022 02 05 00:00:00

Azimut-Elevacion



Tiempo-Elevacion

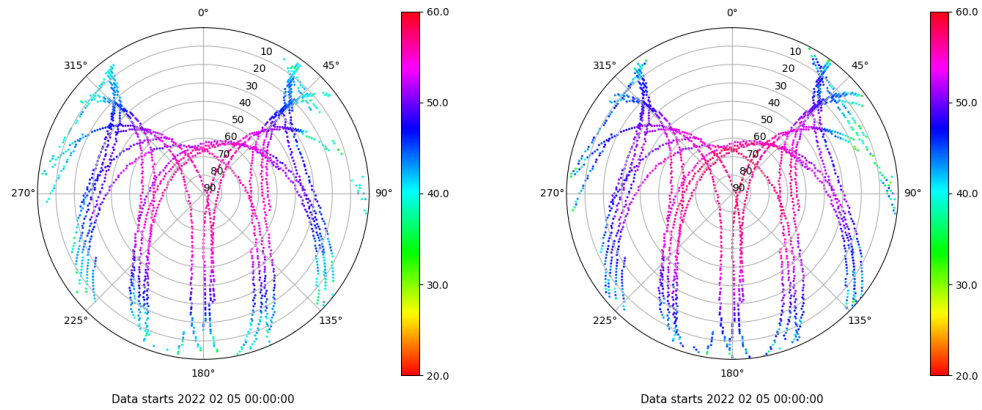


Control de calidad GNSS GAL diario

Estacion: MLLL
 Fecha: 2022 02 05
 Dia del año: 036

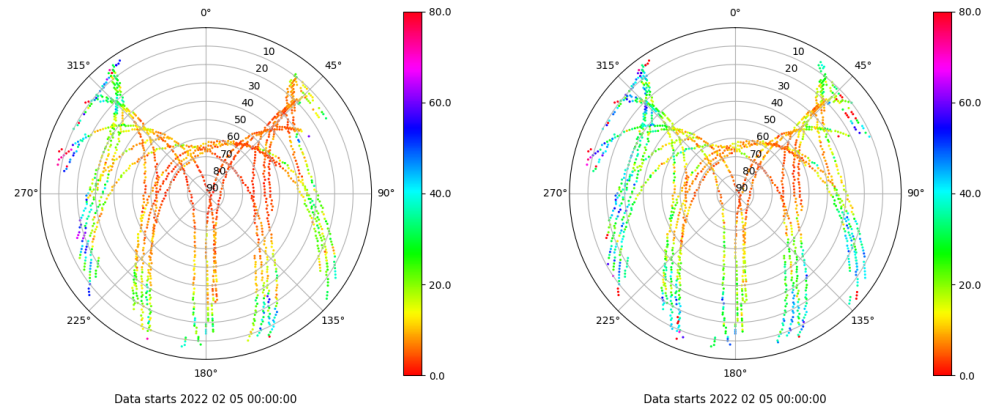
Señal-Ruido GAL E1 y E5

Skyplot for station MLLL. Signal to Noise S1C Data file MLLL00ESP_R_2022036.xtr Skyplot for station MLLL. Signal to Noise S5Q Data file MLLL00ESP_R_2022036.xtr



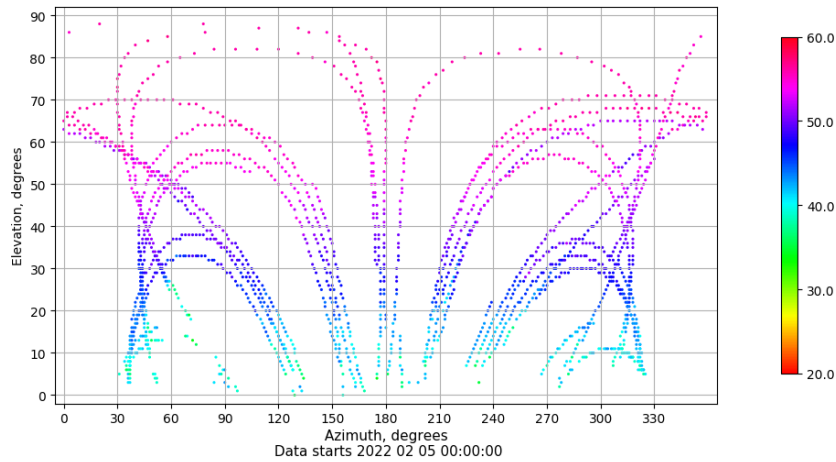
Multipath GAL E1 y E5

Skyplot for station MLLL. Parameter M1C Data file MLLL00ESP_R_2022036.xtr Skyplot for station MLLL. Parameter M5Q Data file MLLL00ESP_R_2022036.xtr



Azimuth-Elevacion

Azimuth-elevation plot for station MLLL. Signal to Noise S1C Data file MLLL00ESP_R_2022036.xtr



Tiempo-Elevacion

Time-elevation plot for station MLLL. Signal to Noise S1C Data file MLLL00ESP_R_2022036.xtr

