

Control de calidad GNSS GPS diario

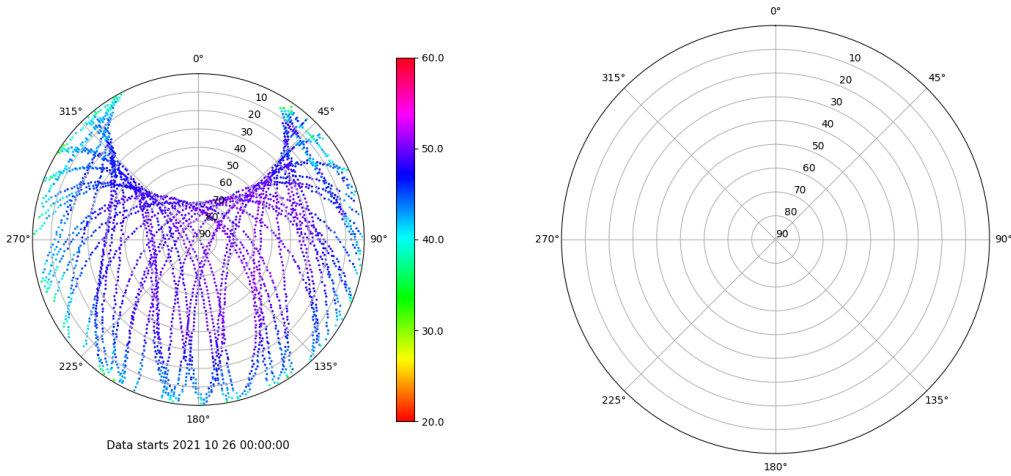
Estacion: MENC

Fecha: 2021 10 26

Dia del año: 299

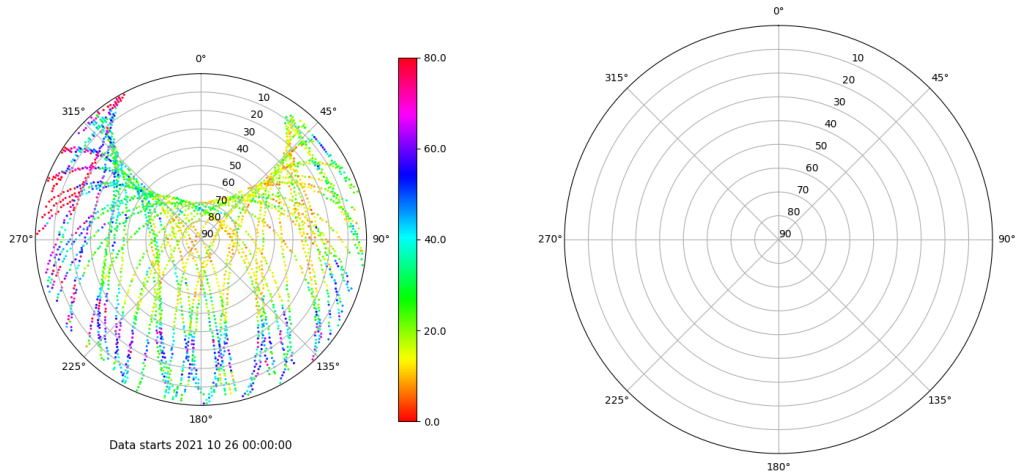
Señal-Ruido GPS L1 y L2

Skyplot for station MENC. Signal to Noise S1C Data file MENC00ESP_R_2021299.xtr Skyplot for station MENC. Signal to Noise S2S Data file MENC00ESP_R_2021299.xtr



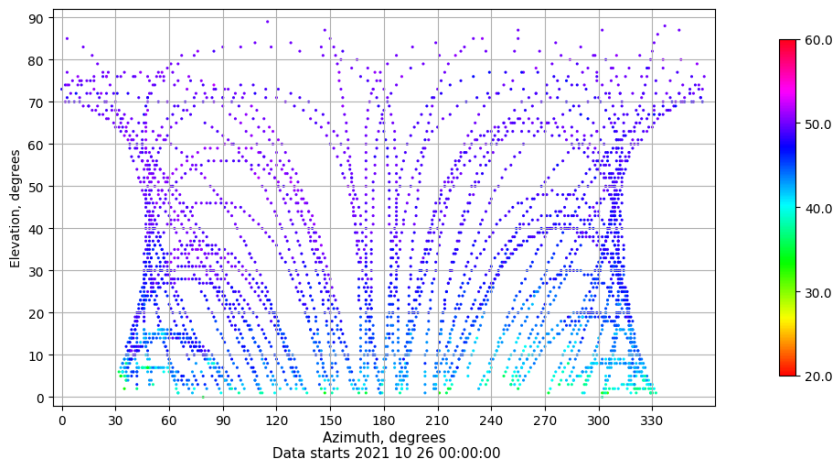
Multipath GPS L1 y L2

Skyplot for station MENC. Parameter M1C Data file MENC00ESP_R_2021299.xtr Skyplot for station MENC. Parameter M2S Data file MENC00ESP_R_2021299.xtr



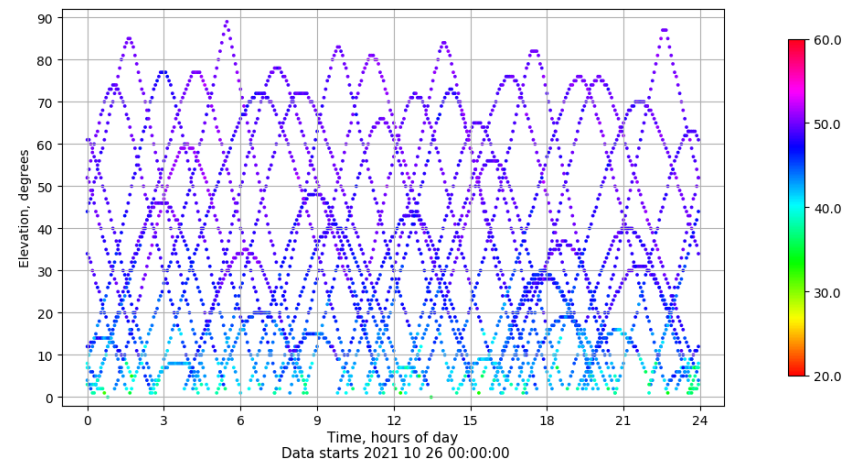
Azimut-Elevacion

Azimuth-elevation plot for station MENC. Signal to Noise S1C Data file MENC00ESP_R_2021299.xtr



Tiempo-Elevacion

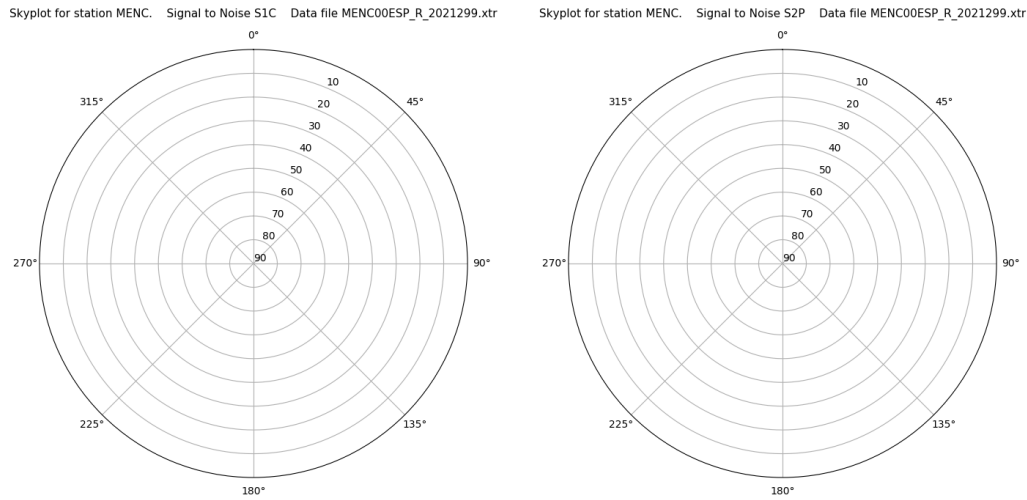
Time-elevation plot for station MENC. Signal to Noise S1C Data file MENC00ESP_R_2021299.xtr



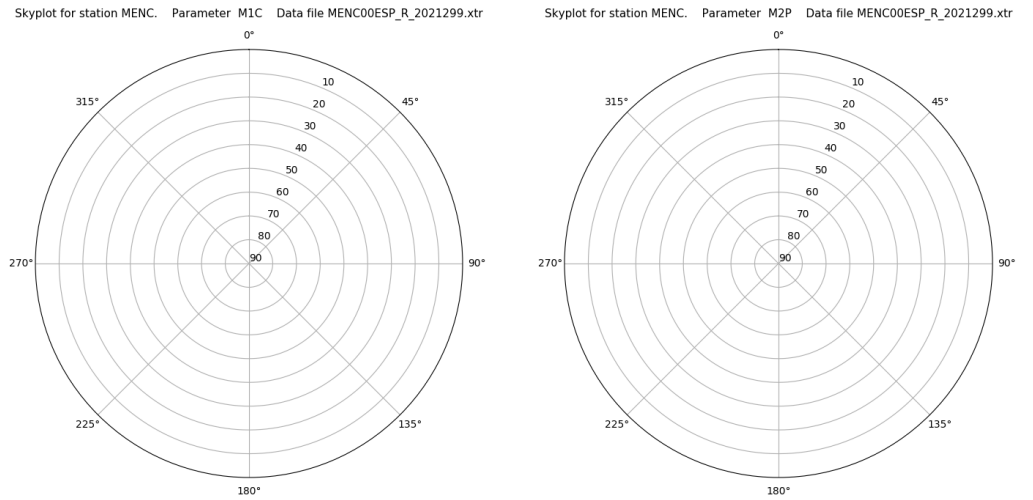
Control de calidad GNSS GLO diario

Estacion: MENC
 Fecha: 2021 10 26
 Dia del año: 299

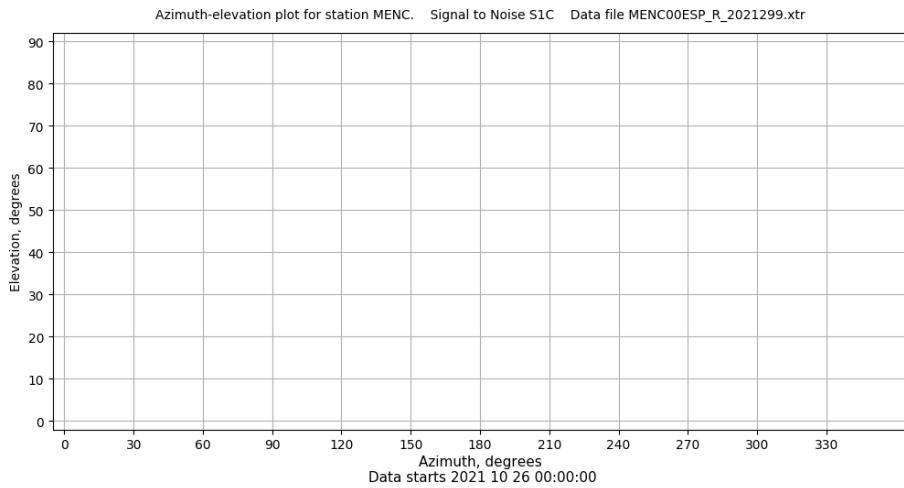
Señal-Ruido GLO L1 y L2



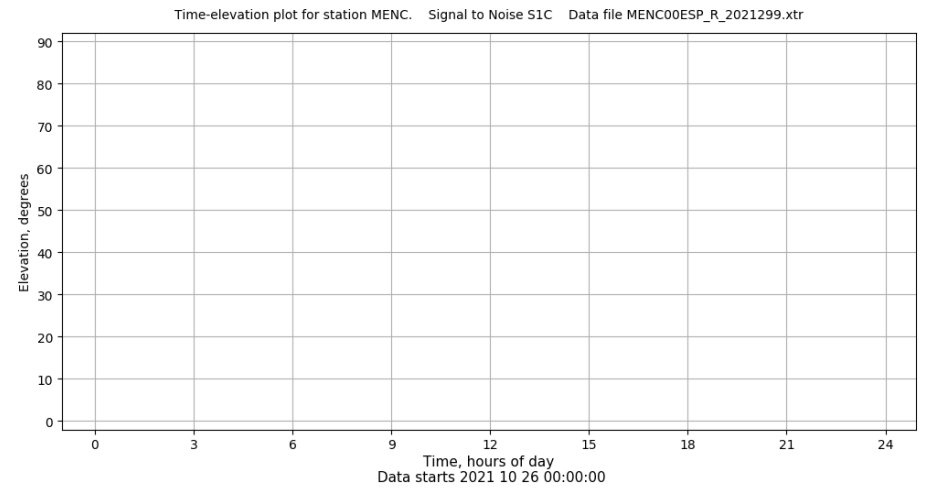
Multipath GLO L1 y L2



Azimut-Elevacion



Tiempo-Elevacion



Control de calidad GNSS GAL diario

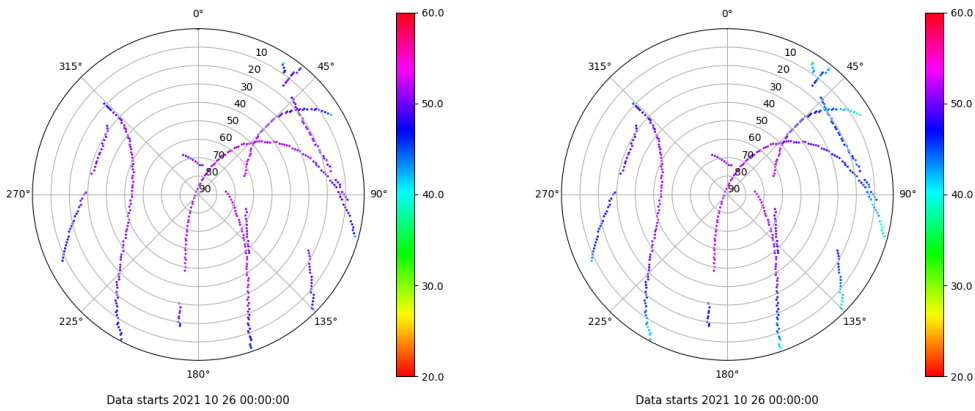
Estacion: MENC

Fecha: 2021 10 26

Dia del año: 299

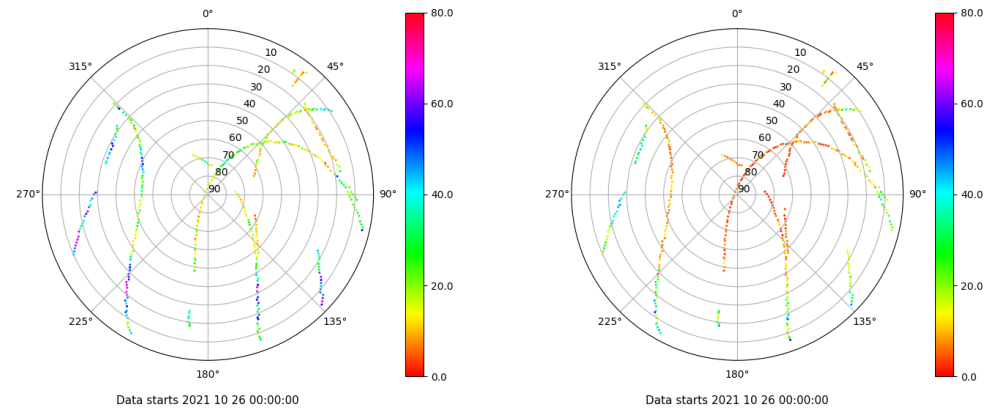
Señal-Ruido GAL E1 y E5

Skyplot for station MENC. Signal to Noise S1C Data file MENC00ESP_R_2021299.xtr Skyplot for station MENC. Signal to Noise S5Q Data file MENC00ESP_R_2021299.xtr



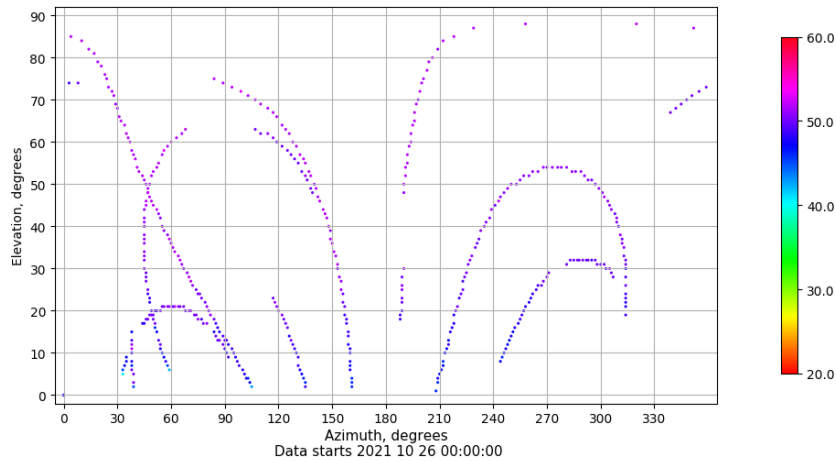
Multipath GAL E1 y E5

Skyplot for station MENC. Parameter M1C Data file MENC00ESP_R_2021299.xtr Skyplot for station MENC. Parameter M5Q Data file MENC00ESP_R_2021299.xtr



Azimut-Elevacion

Azimuth-elevation plot for station MENC. Signal to Noise S1C Data file MENC00ESP_R_2021299.xtr



Tiempo-Elevacion

Time-elevation plot for station MENC. Signal to Noise S1C Data file MENC00ESP_R_2021299.xtr

