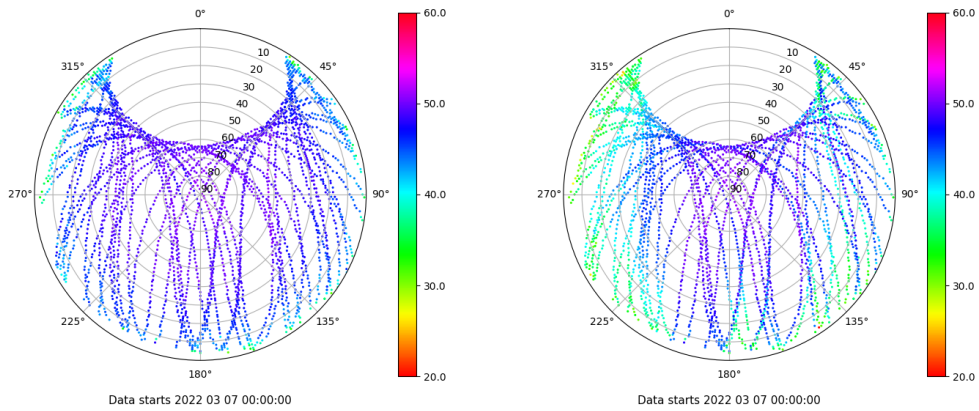


# Control de calidad GNSS GPS diario

Estacion: MELI  
 Fecha: 2022 03 07  
 Dia del año: 066

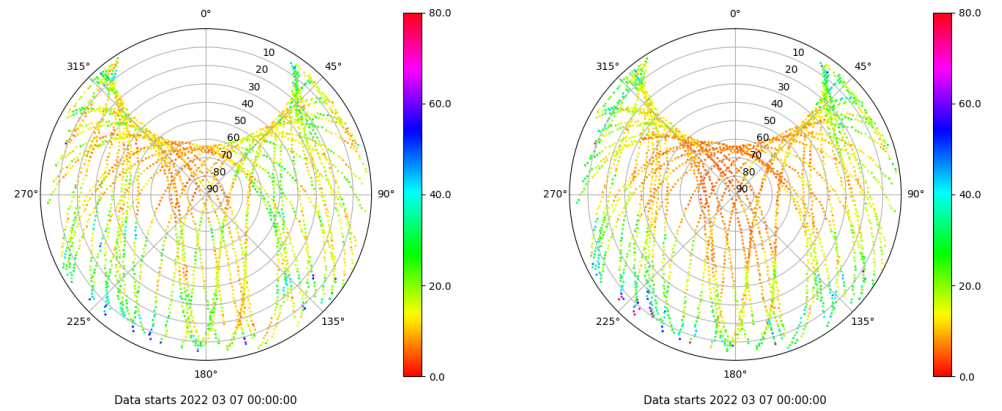
## Señal-Ruido GPS L1 y L2

Skyplot for station MELI. Signal to Noise S1C Data file MELI00ESP\_R\_2022066.xtr Skyplot for station MELI. Signal to Noise S2W Data file MELI00ESP\_R\_2022066.xtr



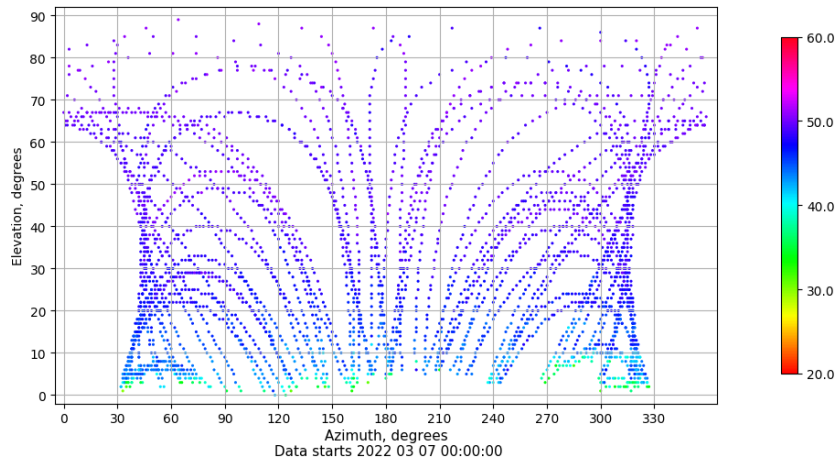
## Multipath GPS L1 y L2

Skyplot for station MELI. Parameter M1C Data file MELI00ESP\_R\_2022066.xtr Skyplot for station MELI. Parameter M2W Data file MELI00ESP\_R\_2022066.xtr



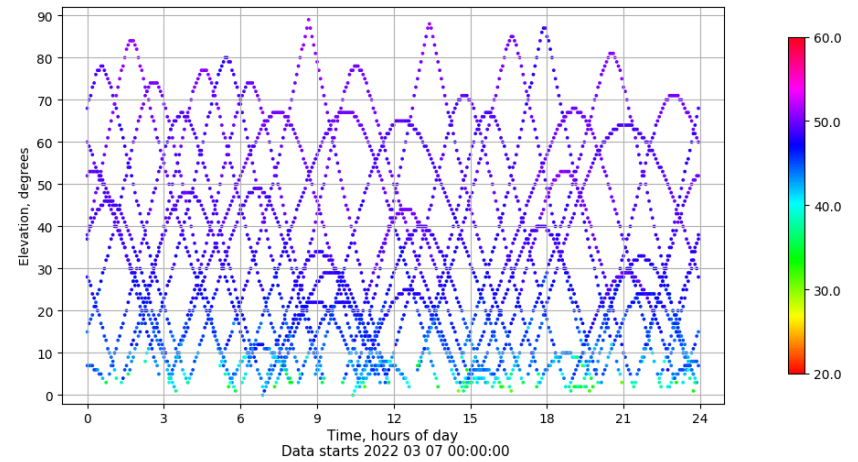
## Azimuth-Elevacion

Azimuth-elevation plot for station MELI. Signal to Noise S1C Data file MELI00ESP\_R\_2022066.xtr



## Tiempo-Elevacion

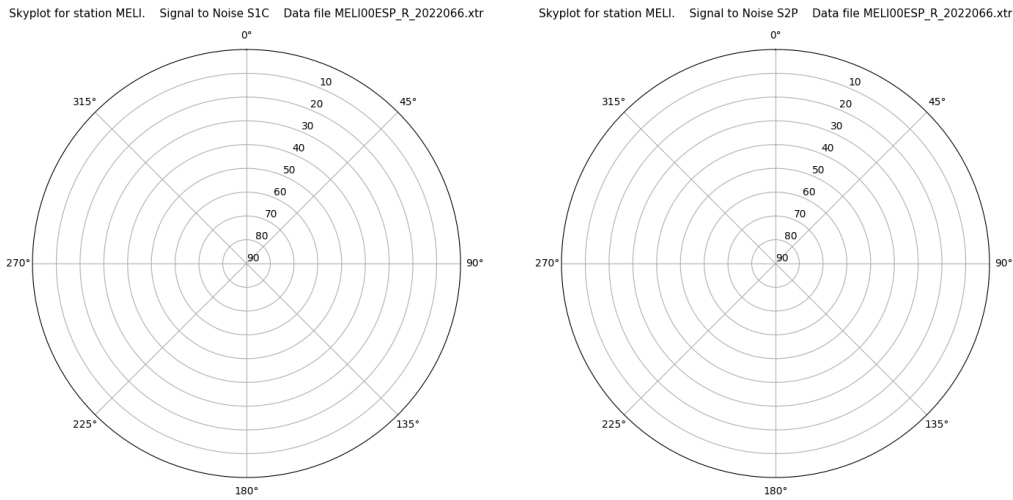
Time-elevation plot for station MELI. Signal to Noise S1C Data file MELI00ESP\_R\_2022066.xtr



# Control de calidad GNSS GLO diario

Estacion: MELI  
 Fecha: 2022 03 07  
 Dia del año: 066

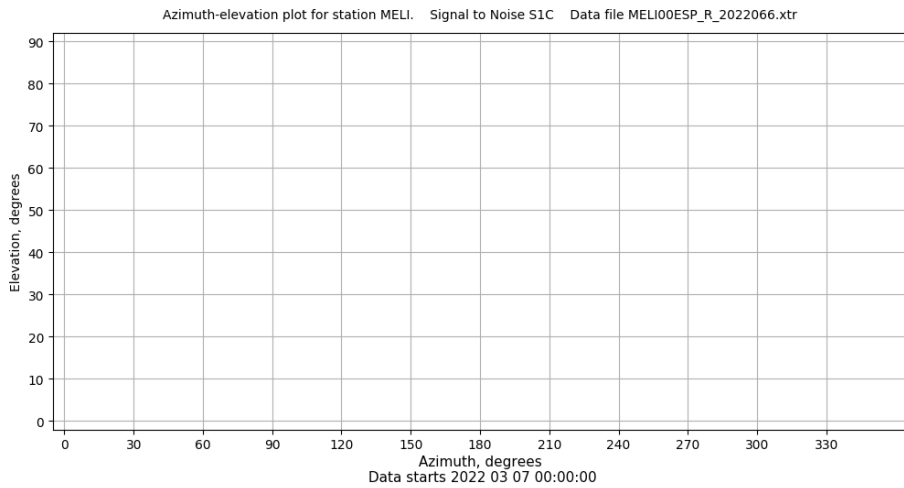
## Señal-Ruido GLO L1 y L2



Data starts 2022 03 07 00:00:00

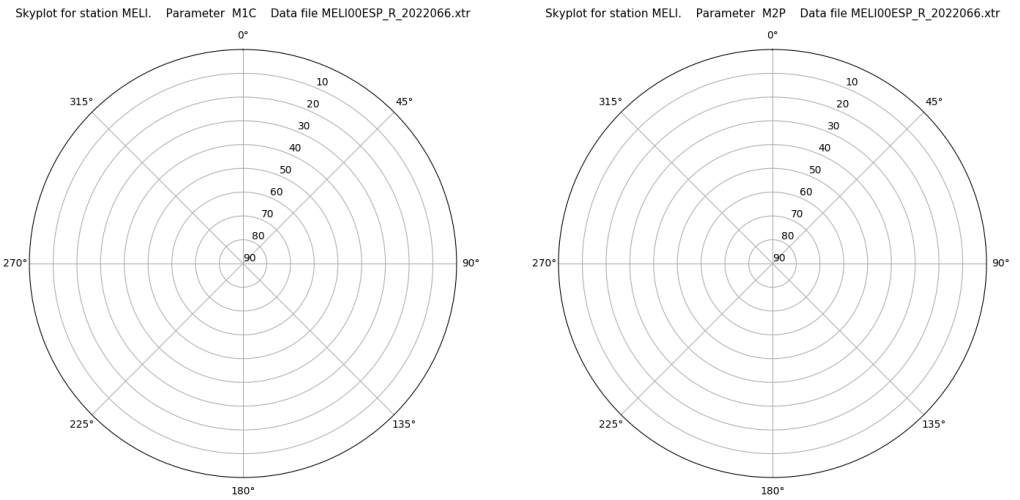
Data starts 2022 03 07 00:00:00

## Azimut-Elevacion



Data starts 2022 03 07 00:00:00

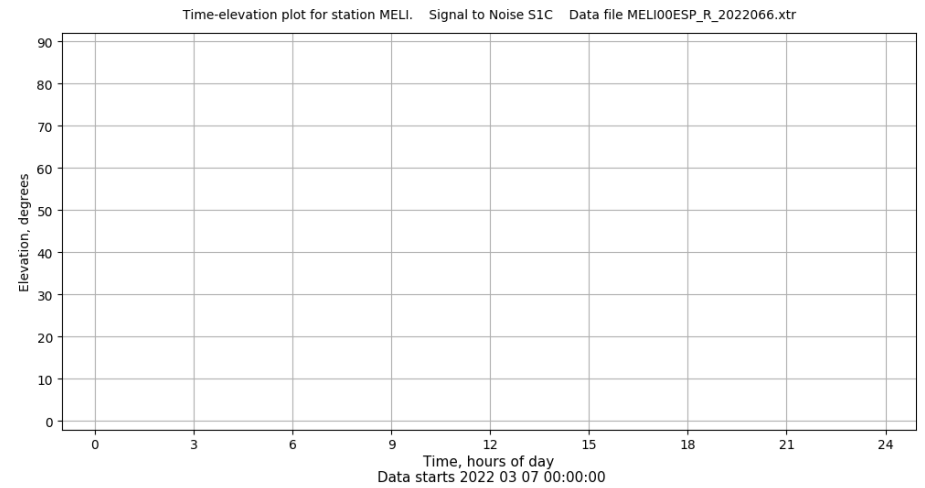
## Multipath GLO L1 y L2



Data starts 2022 03 07 00:00:00

Data starts 2022 03 07 00:00:00

## Tiempo-Elevacion



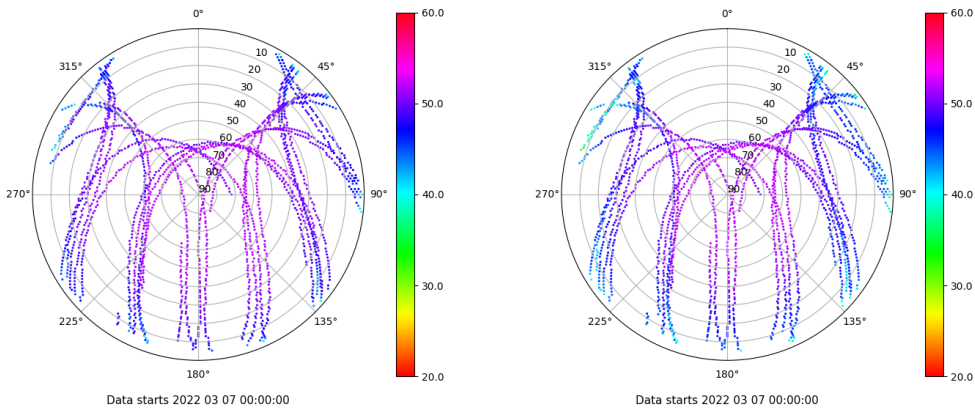
Data starts 2022 03 07 00:00:00

# Control de calidad GNSS GAL diario

Estacion: MELI  
 Fecha: 2022 03 07  
 Dia del año: 066

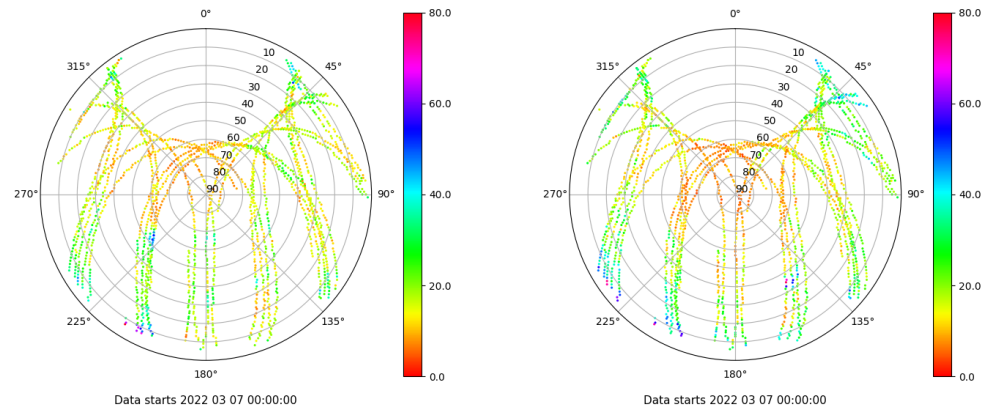
## Señal-Ruido GAL E1 y E5

Skyplot for station MELI. Signal to Noise S1C Data file MELI00ESP\_R\_2022066.xtr Skyplot for station MELI. Signal to Noise S5Q Data file MELI00ESP\_R\_2022066.xtr



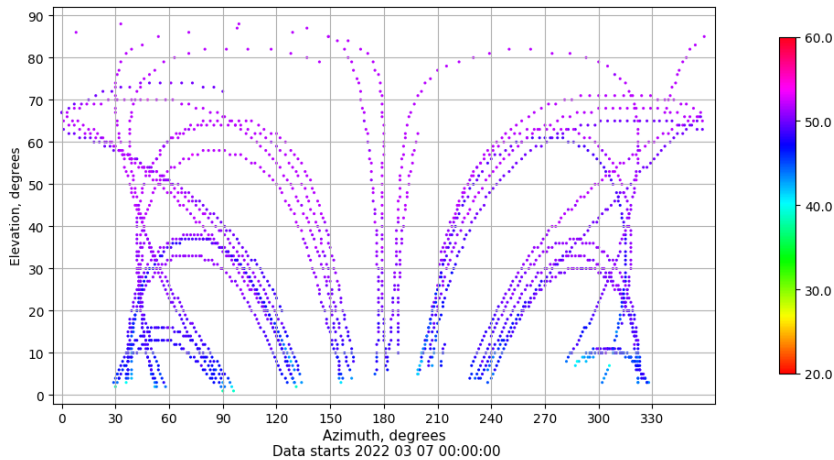
## Multipath GAL E1 y E5

Skyplot for station MELI. Parameter M1C Data file MELI00ESP\_R\_2022066.xtr Skyplot for station MELI. Parameter M5Q Data file MELI00ESP\_R\_2022066.xtr



## Azimuth-Elevacion

Azimuth-elevation plot for station MELI. Signal to Noise S1C Data file MELI00ESP\_R\_2022066.xtr



## Tiempo-Elevacion

Time-elevation plot for station MELI. Signal to Noise S1C Data file MELI00ESP\_R\_2022066.xtr

