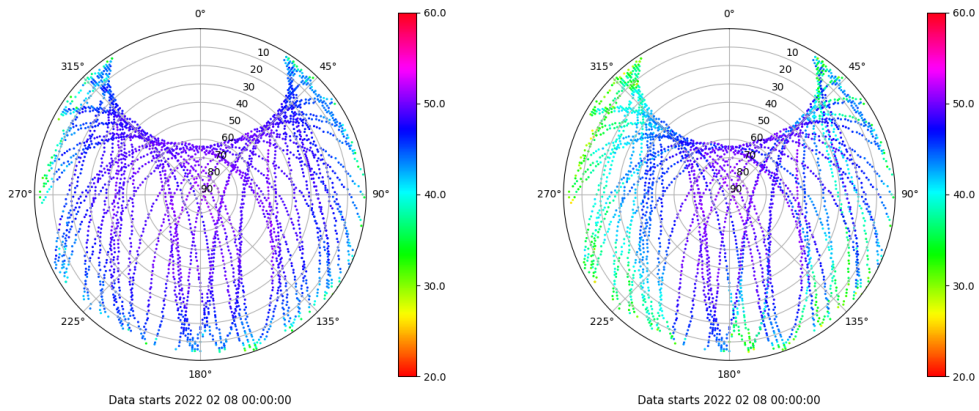


Control de calidad GNSS GPS diario

Estacion: MELI
 Fecha: 2022 02 08
 Dia del año: 039

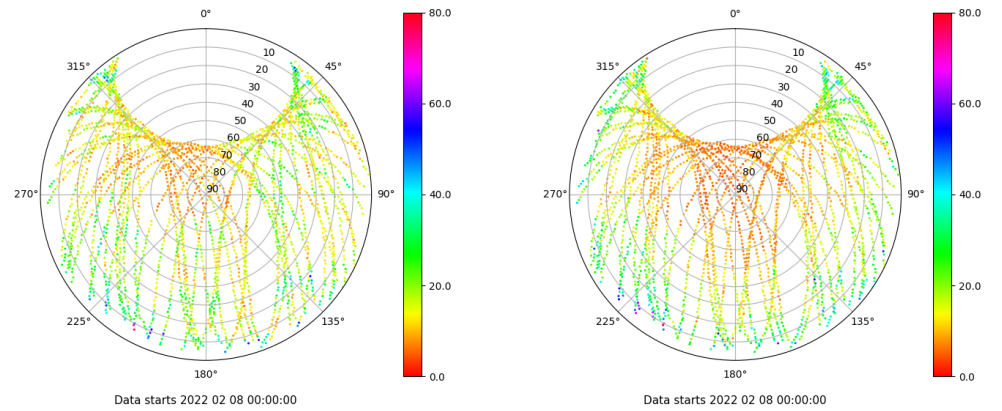
Señal-Ruido GPS L1 y L2

Skyplot for station MELI. Signal to Noise S1C Data file MELI00ESP_R_2022039.xtr Skyplot for station MELI. Signal to Noise S2W Data file MELI00ESP_R_2022039.xtr



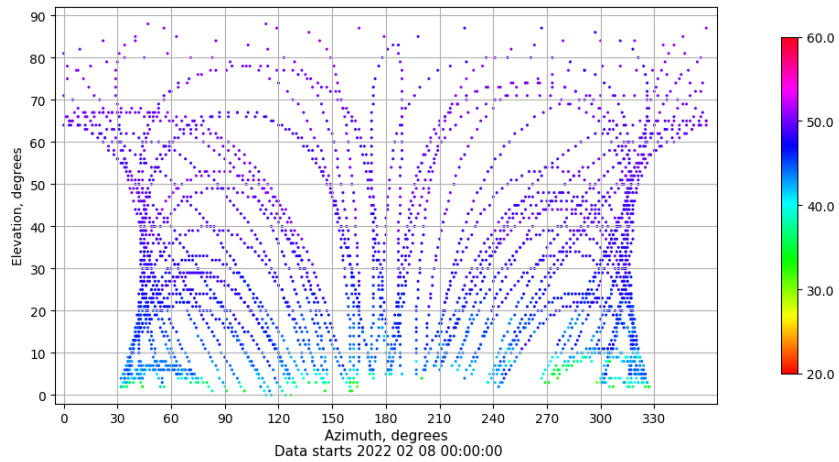
Multipath GPS L1 y L2

Skyplot for station MELI. Parameter M1C Data file MELI00ESP_R_2022039.xtr Skyplot for station MELI. Parameter M2W Data file MELI00ESP_R_2022039.xtr



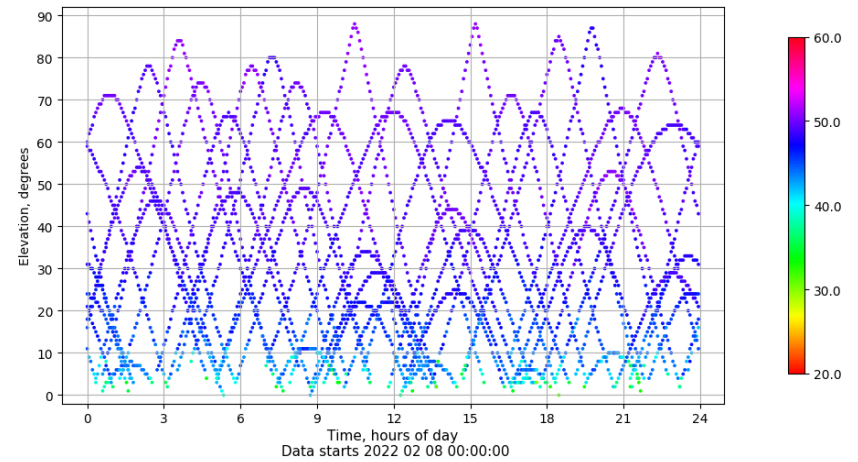
Azimuth-Elevacion

Azimuth-elevation plot for station MELI. Signal to Noise S1C Data file MELI00ESP_R_2022039.xtr



Tiempo-Elevacion

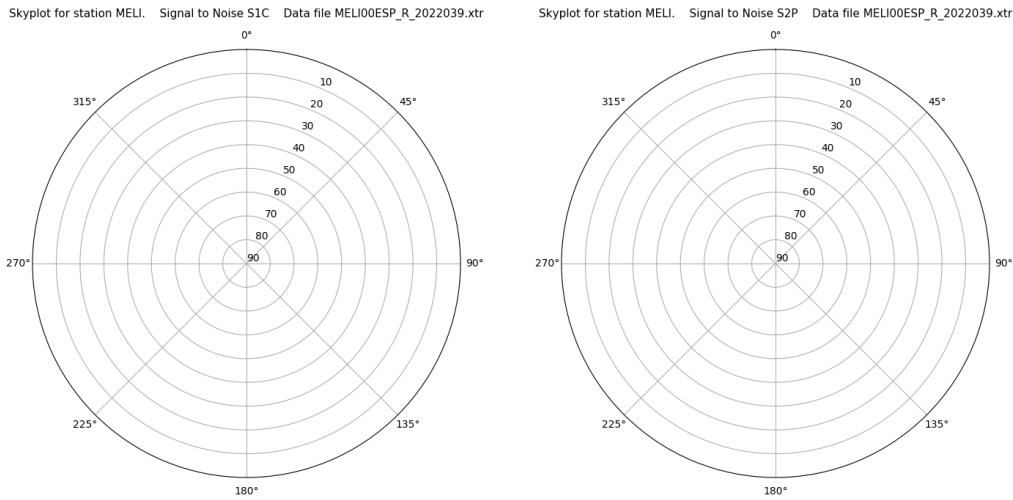
Time-elevation plot for station MELI. Signal to Noise S1C Data file MELI00ESP_R_2022039.xtr



Control de calidad GNSS GLO diario

Estacion: MELI
 Fecha: 2022 02 08
 Dia del año: 039

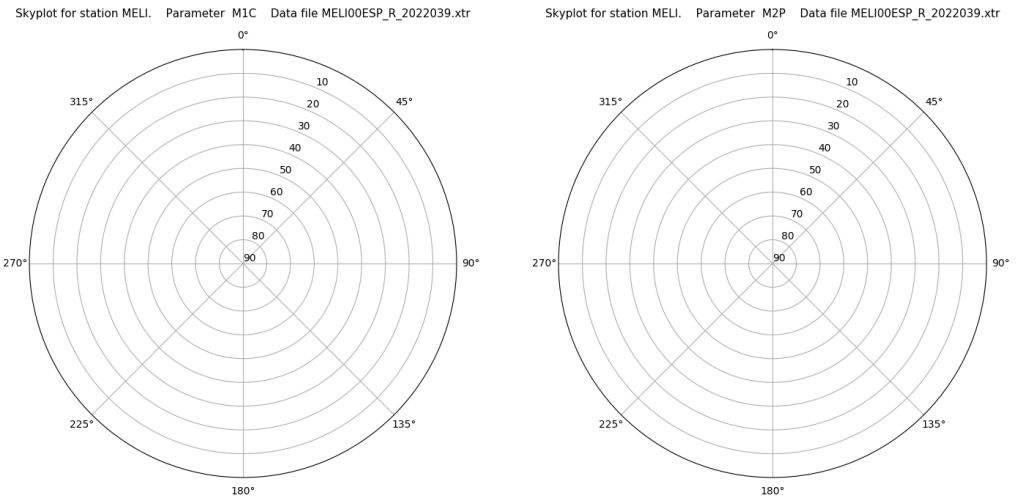
Señal-Ruido GLO L1 y L2



Data starts 2022 02 08 00:00:00

Data starts 2022 02 08 00:00:00

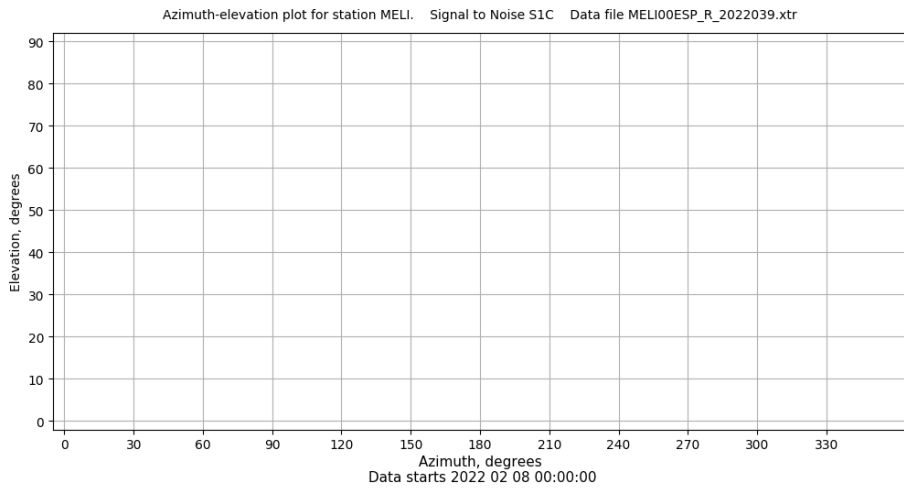
Multipath GLO L1 y L2



Data starts 2022 02 08 00:00:00

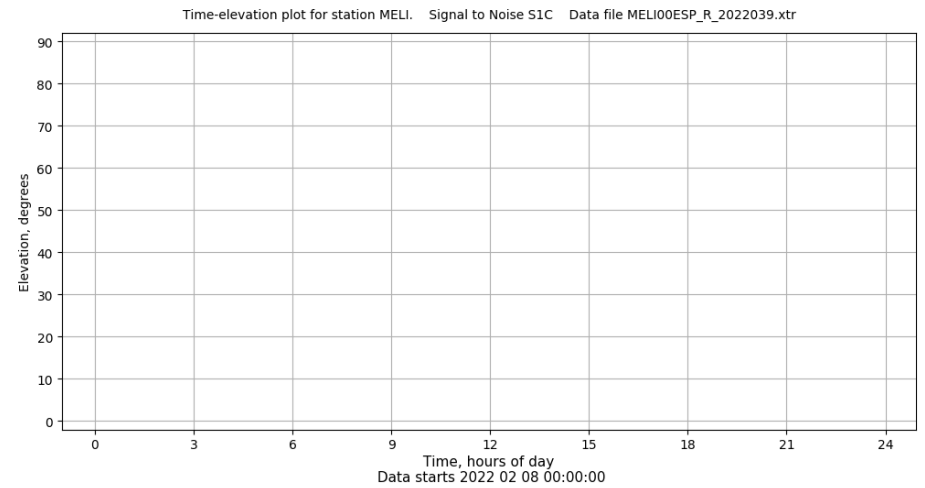
Data starts 2022 02 08 00:00:00

Azimut-Elevacion



Data starts 2022 02 08 00:00:00

Tiempo-Elevacion



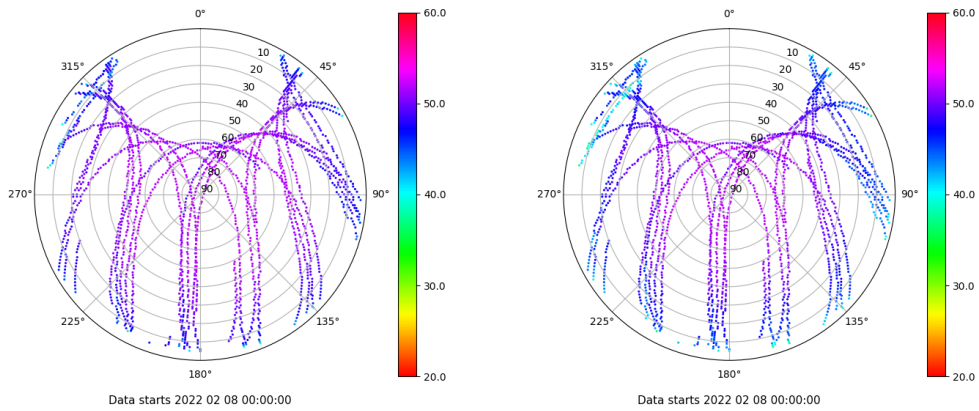
Data starts 2022 02 08 00:00:00

Control de calidad GNSS GAL diario

Estacion: MELI
 Fecha: 2022 02 08
 Dia del año: 039

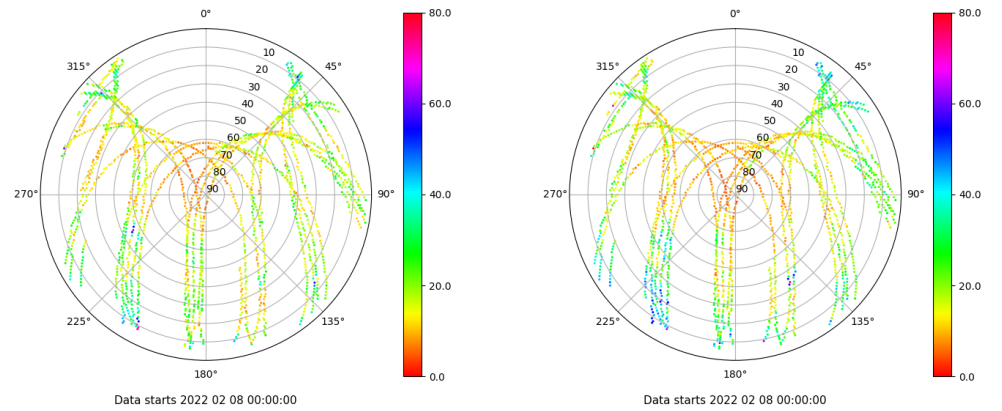
Señal-Ruido GAL E1 y E5

Skyplot for station MELI. Signal to Noise S1C Data file MELI00ESP_R_2022039.xtr Skyplot for station MELI. Signal to Noise S5Q Data file MELI00ESP_R_2022039.xtr



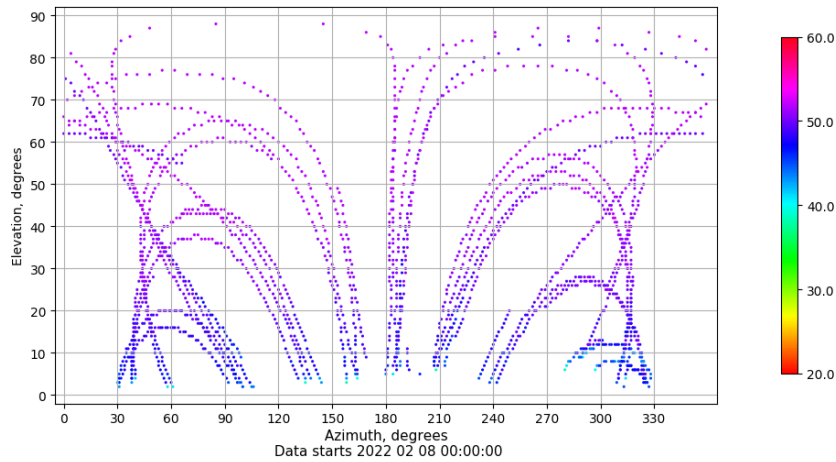
Multipath GAL E1 y E5

Skyplot for station MELI. Parameter M1C Data file MELI00ESP_R_2022039.xtr Skyplot for station MELI. Parameter M5Q Data file MELI00ESP_R_2022039.xtr



Azimuth-Elevacion

Azimuth-elevation plot for station MELI. Signal to Noise S1C Data file MELI00ESP_R_2022039.xtr



Tiempo-Elevacion

Time-elevation plot for station MELI. Signal to Noise S1C Data file MELI00ESP_R_2022039.xtr

