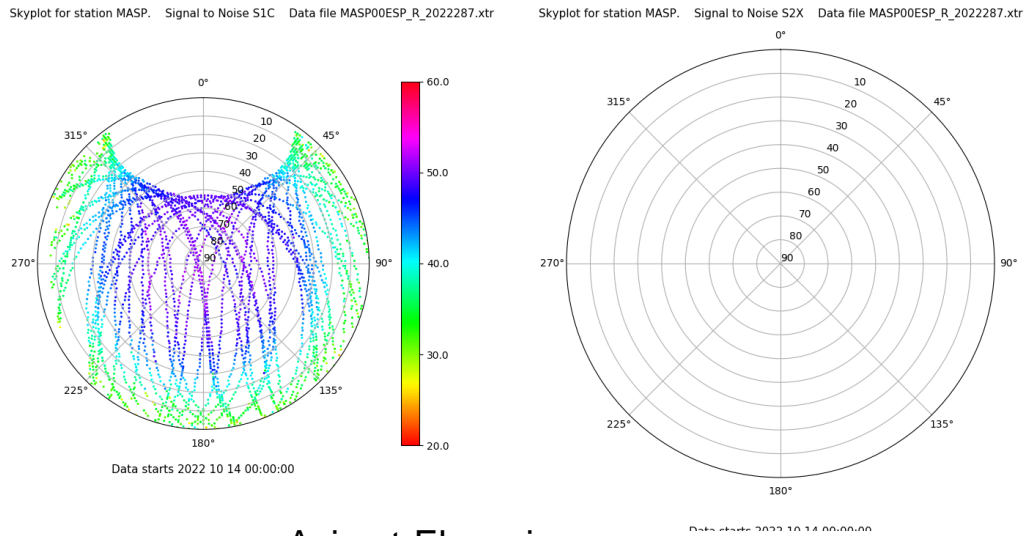


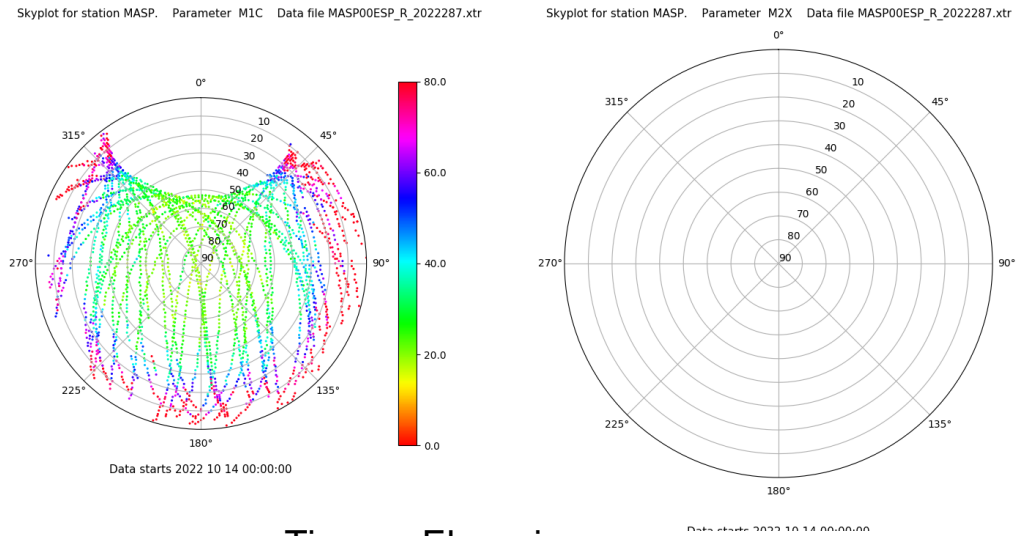
Control de calidad GNSS GPS diario

Estacion: MASP
 Fecha: 2022 10 14
 Dia del año: 287

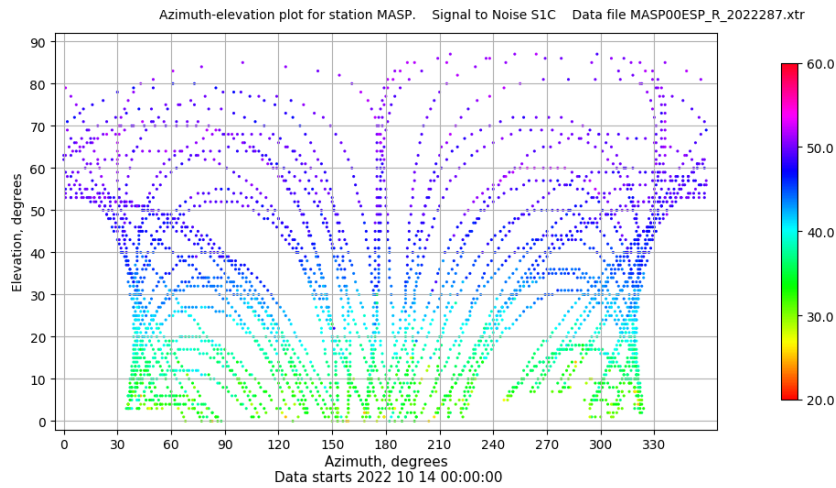
Señal-Ruido GPS L1 y L2



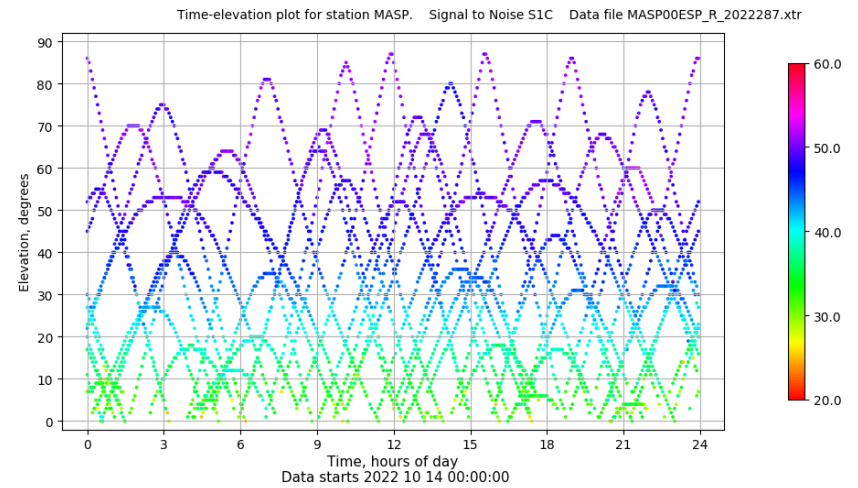
Multipath GPS L1 y L2



Azimut-Elevacion



Tiempo-Elevacion

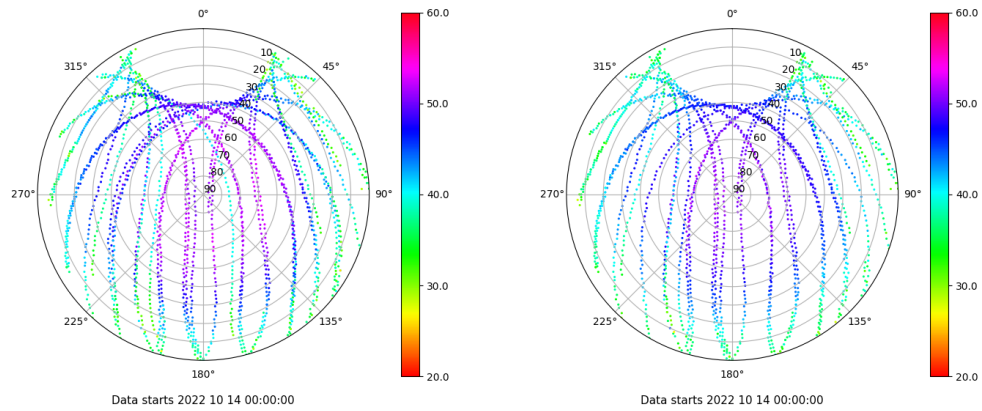


Control de calidad GNSS GLO diario

Estacion: MASP
 Fecha: 2022 10 14
 Dia del año: 287

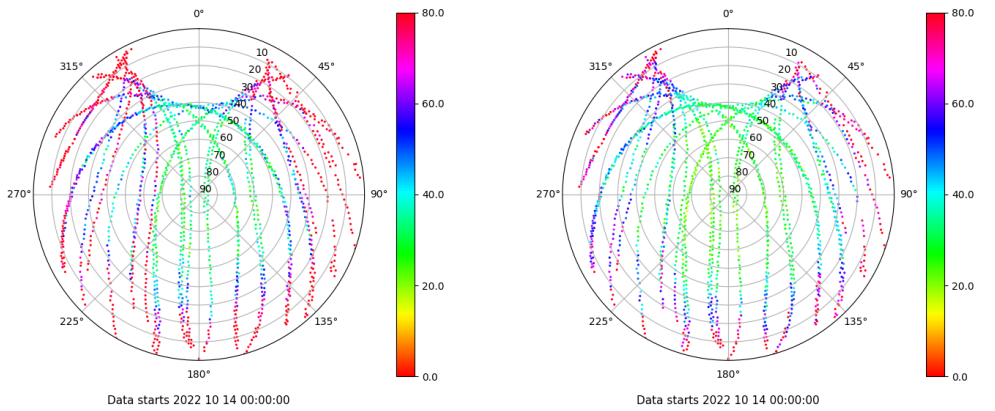
Señal-Ruido GLO L1 y L2

Skyplot for station MASP. Signal to Noise S1C Data file MASP00ESP_R_2022287.xtr Skyplot for station MASP. Signal to Noise S2C Data file MASP00ESP_R_2022287.xtr



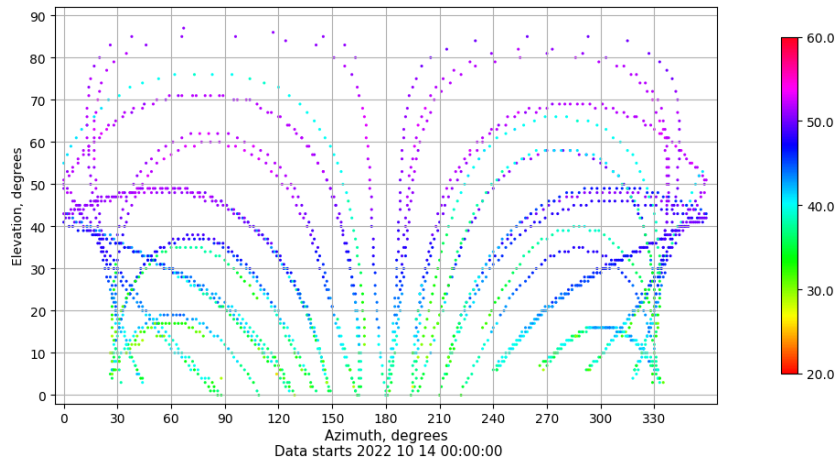
Multipath GLO L1 y L2

Skyplot for station MASP. Parameter M1C Data file MASP00ESP_R_2022287.xtr Skyplot for station MASP. Parameter M2C Data file MASP00ESP_R_2022287.xtr



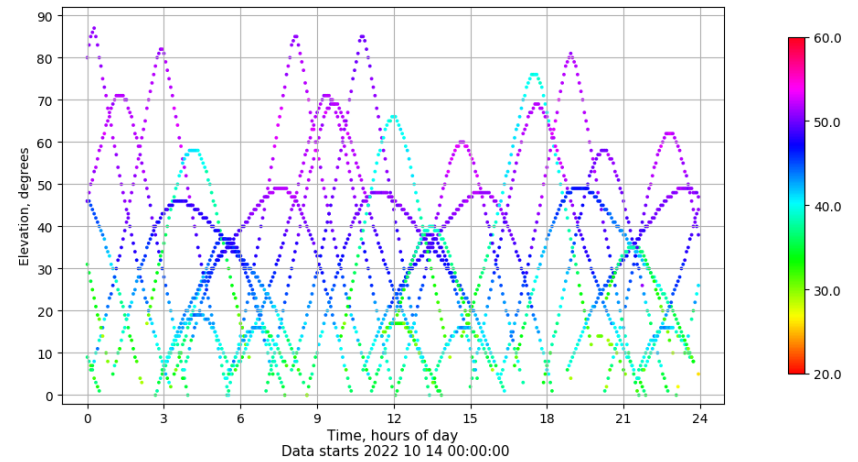
Azimuth-Elevacion

Azimuth-elevation plot for station MASP. Signal to Noise S1C Data file MASP00ESP_R_2022287.xtr



Tiempo-Elevacion

Time-elevation plot for station MASP. Signal to Noise S1C Data file MASP00ESP_R_2022287.xtr

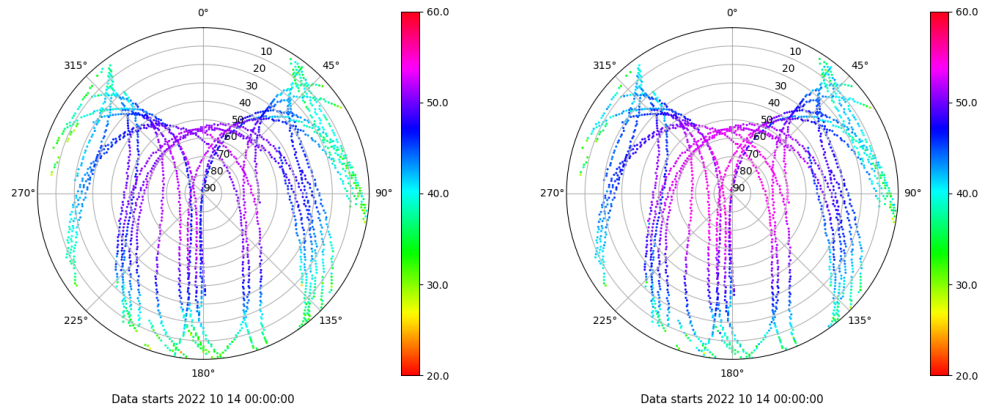


Control de calidad GNSS GAL diario

Estacion: MASP
 Fecha: 2022 10 14
 Dia del año: 287

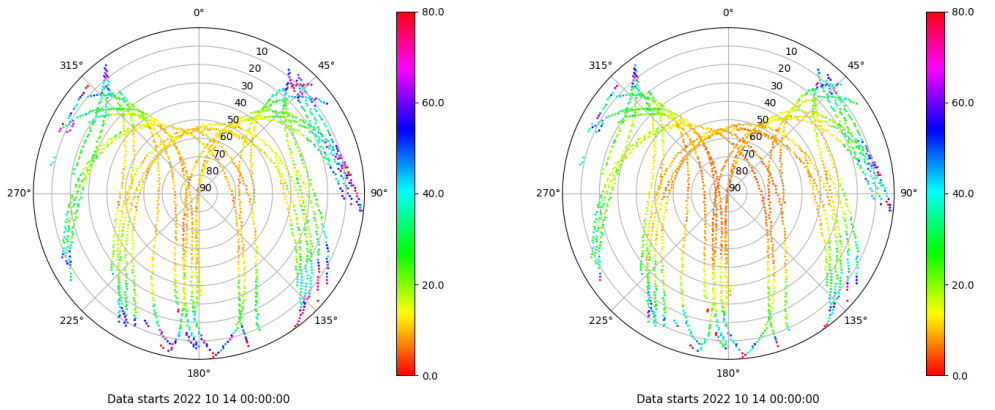
Señal-Ruido GAL E1 y E5

Skyplot for station MASP. Signal to Noise S1X Data file MASP00ESP_R_2022287.xtr Skyplot for station MASP. Signal to Noise S5X Data file MASP00ESP_R_2022287.xtr



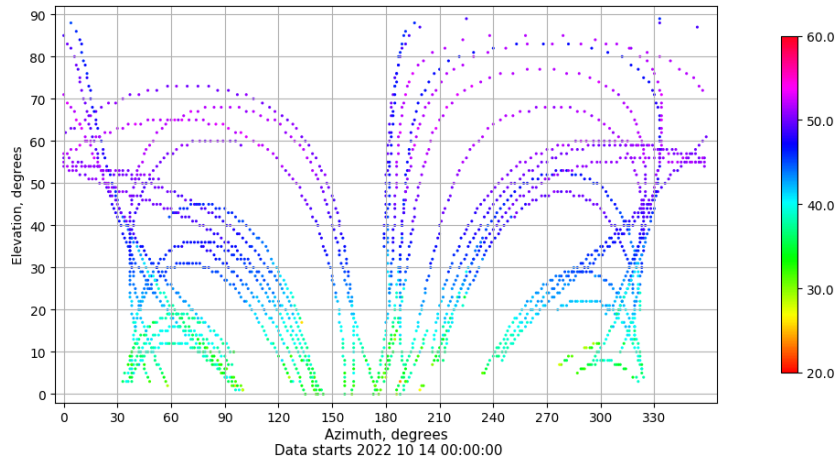
Multipath GAL E1 y E5

Skyplot for station MASP. Parameter M1X Data file MASP00ESP_R_2022287.xtr Skyplot for station MASP. Parameter M5X Data file MASP00ESP_R_2022287.xtr



Azimut-Elevacion

Azimuth-elevation plot for station MASP. Signal to Noise S1X Data file MASP00ESP_R_2022287.xtr



Tiempo-Elevacion

Time-elevation plot for station MASP. Signal to Noise S1X Data file MASP00ESP_R_2022287.xtr

