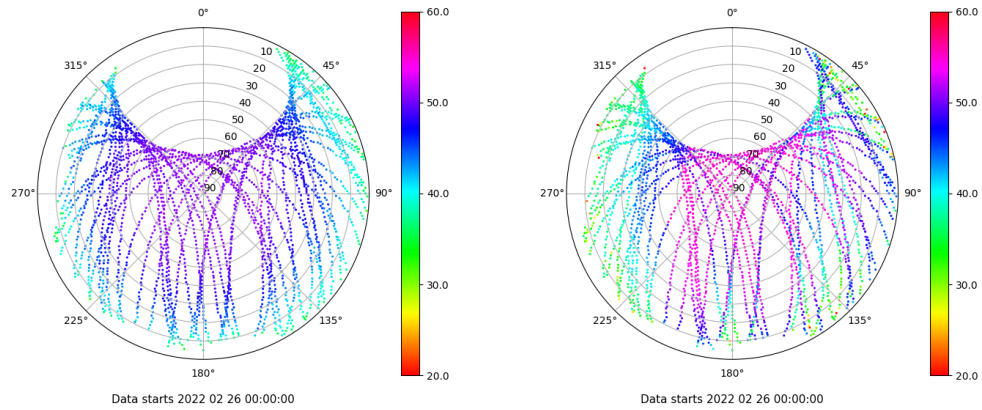


Control de calidad GNSS GPS diario

Estacion: MALL
 Fecha: 2022 02 26
 Dia del año: 057

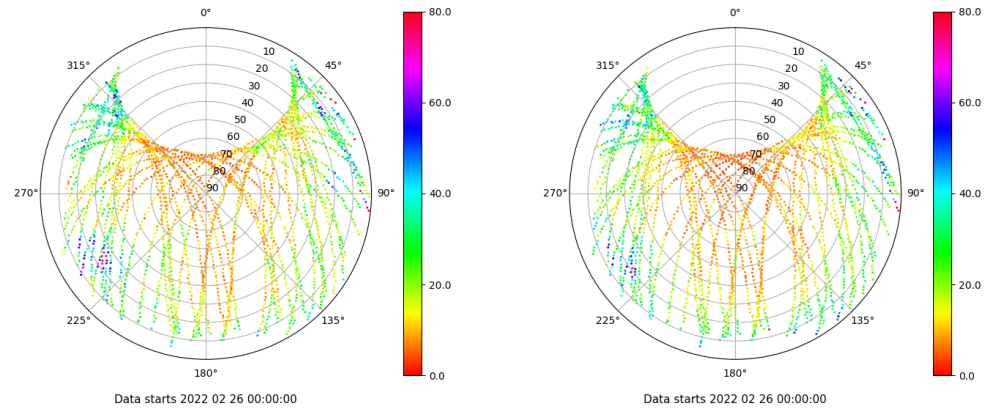
Señal-Ruido GPS L1 y L2

Skyplot for station MALL. Signal to Noise S1C Data file MALL00ESP_R_2022057.xtr Skyplot for station MALL. Signal to Noise S2W Data file MALL00ESP_R_2022057.xtr



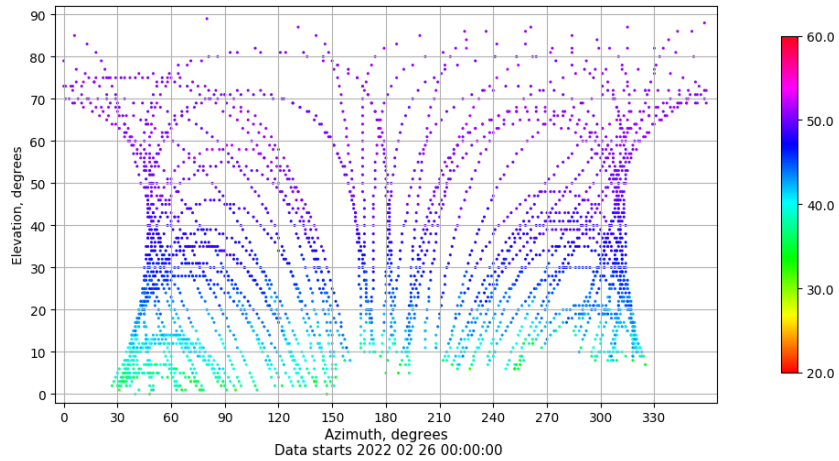
Multipath GPS L1 y L2

Skyplot for station MALL. Parameter M1C Data file MALL00ESP_R_2022057.xtr Skyplot for station MALL. Parameter M2W Data file MALL00ESP_R_2022057.xtr



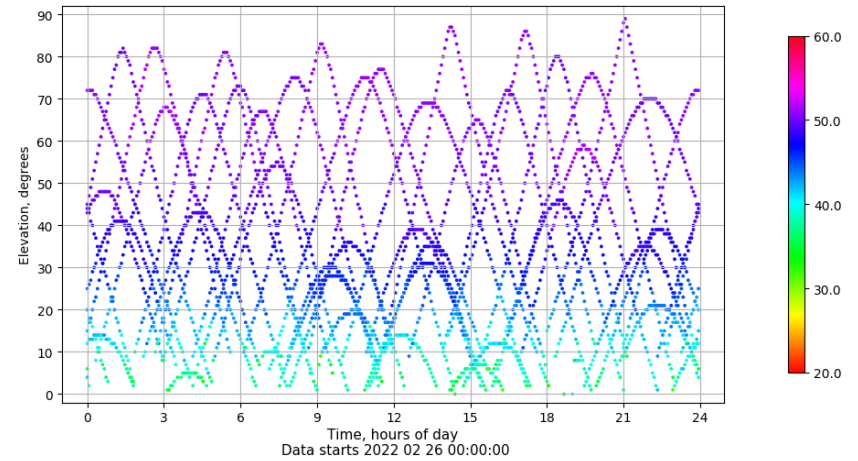
Azimuth-Elevacion

Azimuth-elevation plot for station MALL. Signal to Noise S1C Data file MALL00ESP_R_2022057.xtr



Tiempo-Elevacion

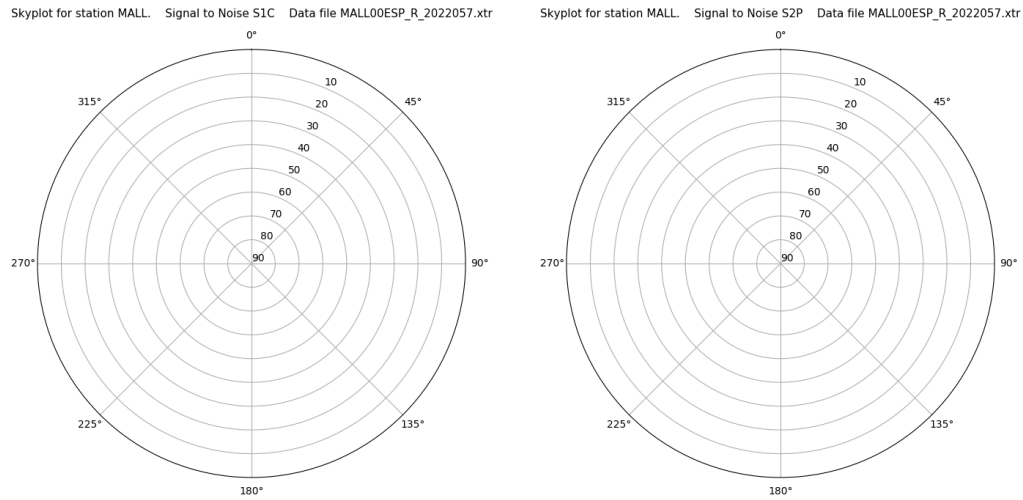
Time-elevation plot for station MALL. Signal to Noise S1C Data file MALL00ESP_R_2022057.xtr



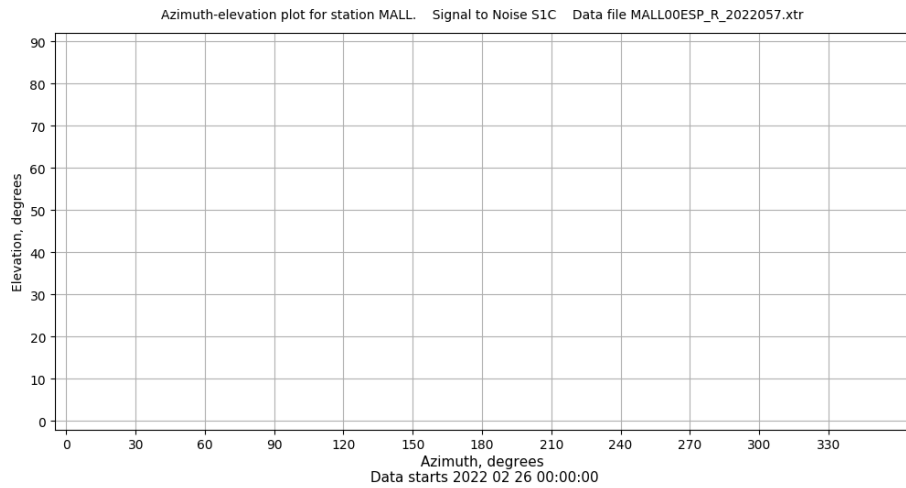
Control de calidad GNSS GLO diario

Estacion: MALL
 Fecha: 2022 02 26
 Dia del año: 057

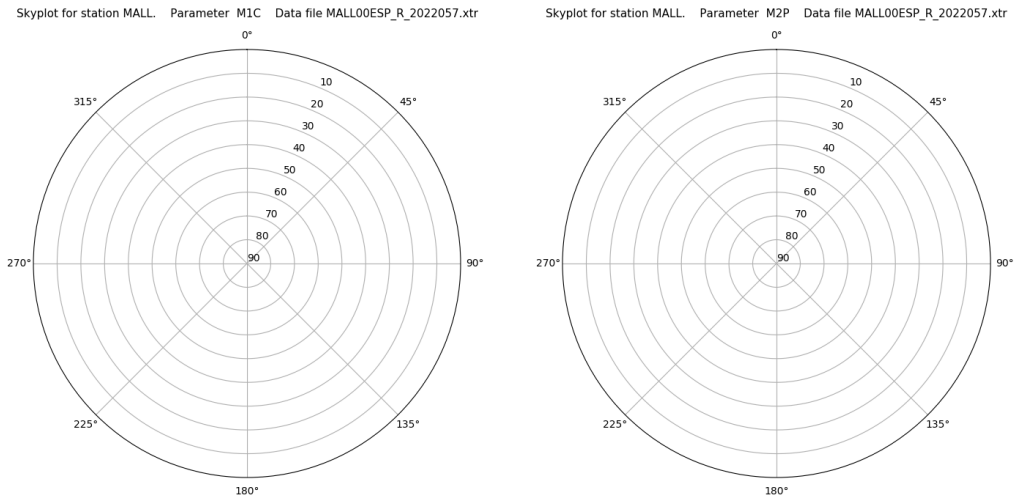
Señal-Ruido GLO L1 y L2



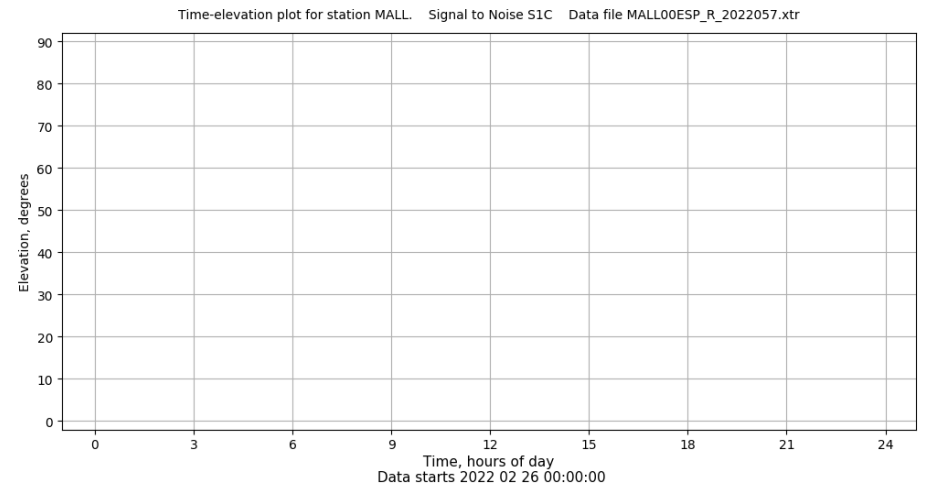
Azimut-Elevacion



Multipath GLO L1 y L2



Tiempo-Elevacion



Control de calidad GNSS GAL diario

Estacion: MALL

Fecha: 2022 02 26

Día del año: 057

Señal-Ruido GAL E1 y E5

Multipath GAL E1 y E5

No existen gráficos para GAL