

Control de calidad GNSS GPS diario

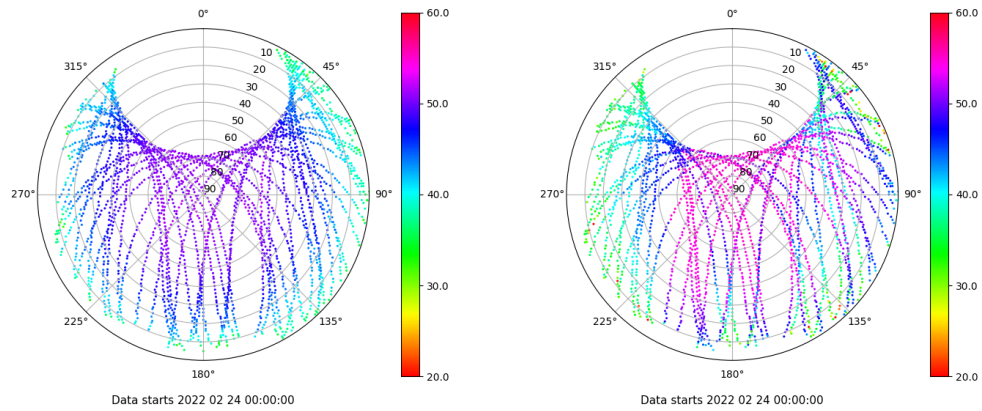
Estacion: MALL

Fecha: 2022 02 24

Dia del año: 055

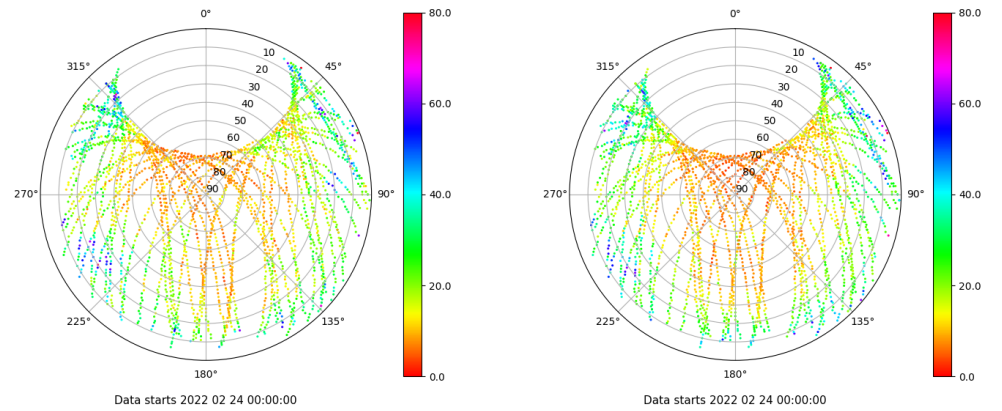
Señal-Ruido GPS L1 y L2

Skyplot for station MALL. Signal to Noise S1C Data file MALL00ESP_R_2022055.xtr Skyplot for station MALL. Signal to Noise S2W Data file MALL00ESP_R_2022055.xtr



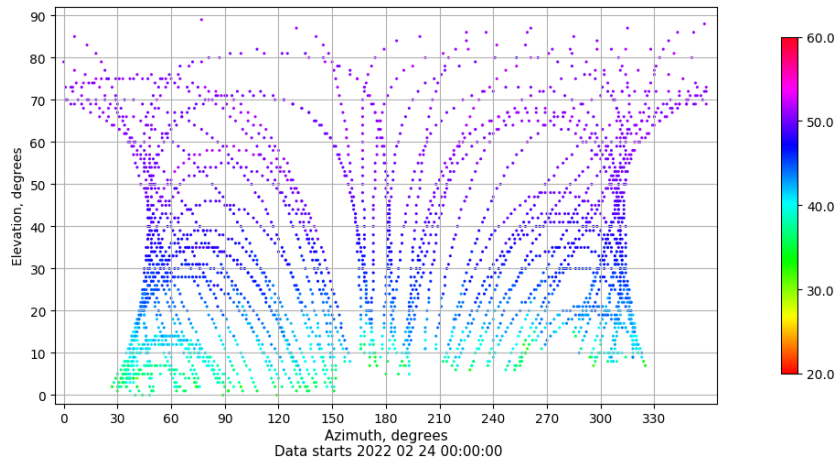
Multipath GPS L1 y L2

Skyplot for station MALL. Parameter M1C Data file MALL00ESP_R_2022055.xtr Skyplot for station MALL. Parameter M2W Data file MALL00ESP_R_2022055.xtr



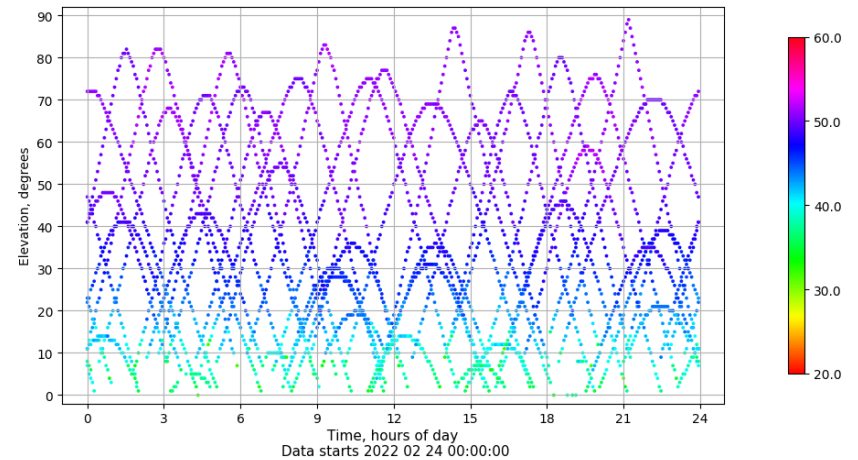
Azimuth-Elevacion

Azimuth-elevation plot for station MALL. Signal to Noise S1C Data file MALL00ESP_R_2022055.xtr



Tiempo-Elevacion

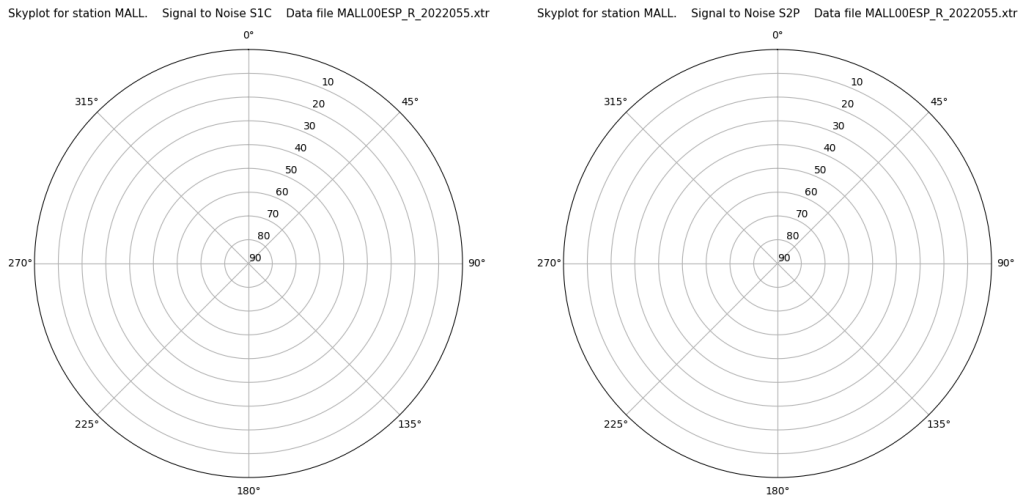
Time-elevation plot for station MALL. Signal to Noise S1C Data file MALL00ESP_R_2022055.xtr



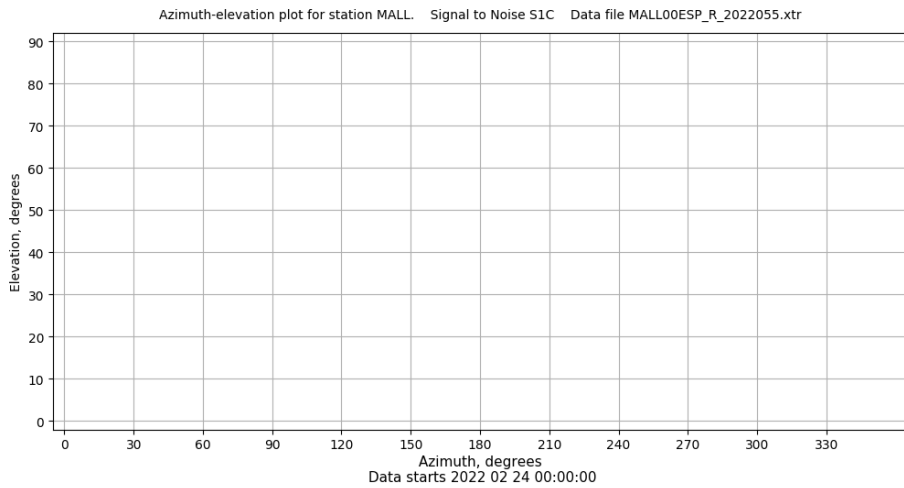
Control de calidad GNSS GLO diario

Estacion: MALL
 Fecha: 2022 02 24
 Dia del año: 055

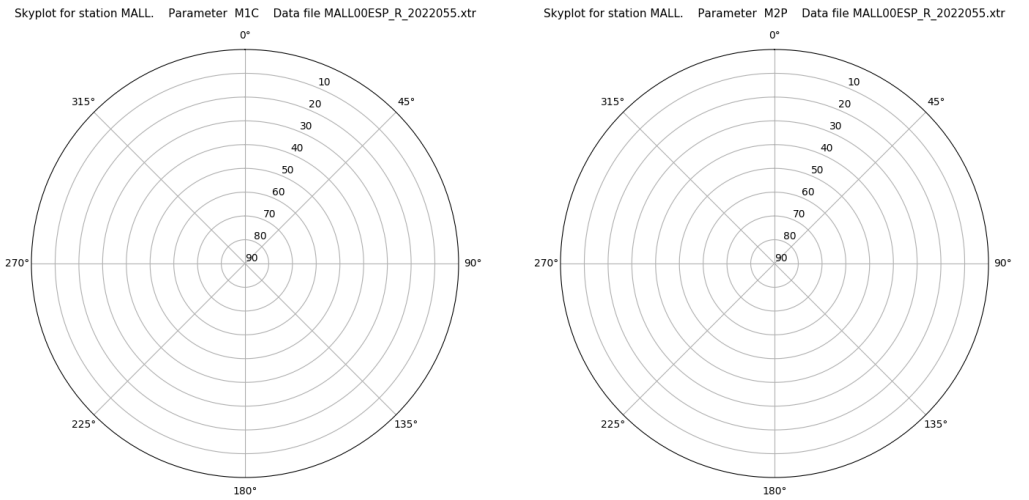
Señal-Ruido GLO L1 y L2



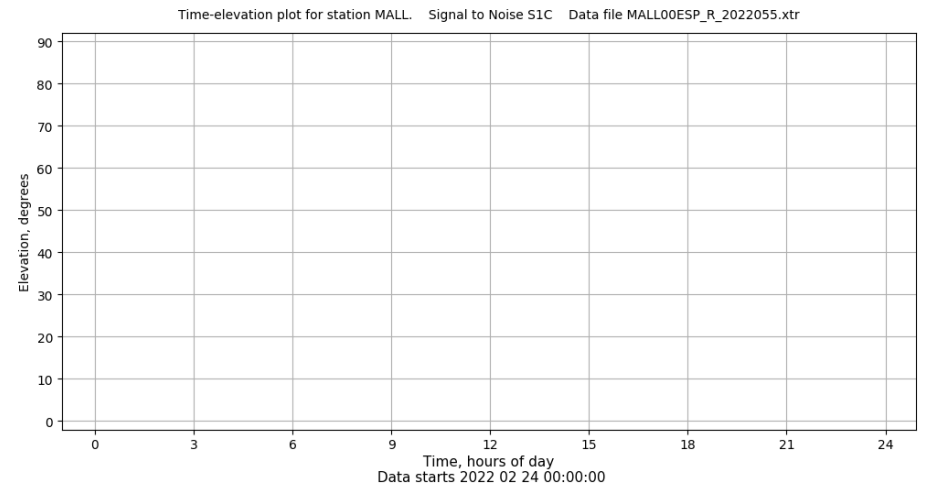
Azimut-Elevacion



Multipath GLO L1 y L2



Tiempo-Elevacion



Control de calidad GNSS GAL diario

Estacion: MALL

Fecha: 2022 02 24

Día del año: 055

Señal-Ruido GAL E1 y E5

Multipath GAL E1 y E5

No existen gráficos para GAL