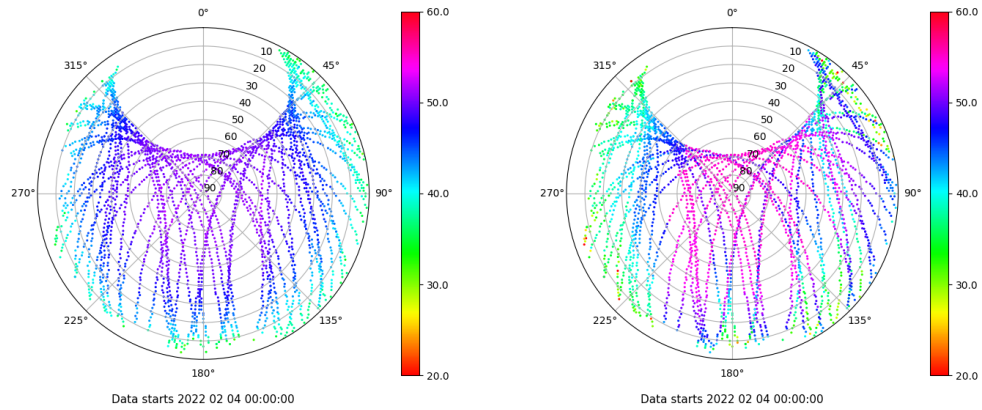


Control de calidad GNSS GPS diario

Estacion: MALL
 Fecha: 2022 02 04
 Dia del año: 035

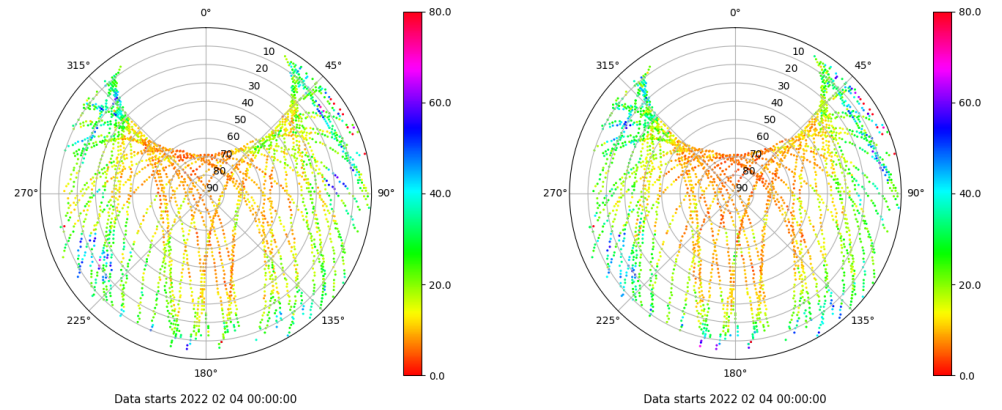
Señal-Ruido GPS L1 y L2

Skyplot for station MALL. Signal to Noise S1C Data file MALL00ESP_R_2022035.xtr Skyplot for station MALL. Signal to Noise S2W Data file MALL00ESP_R_2022035.xtr



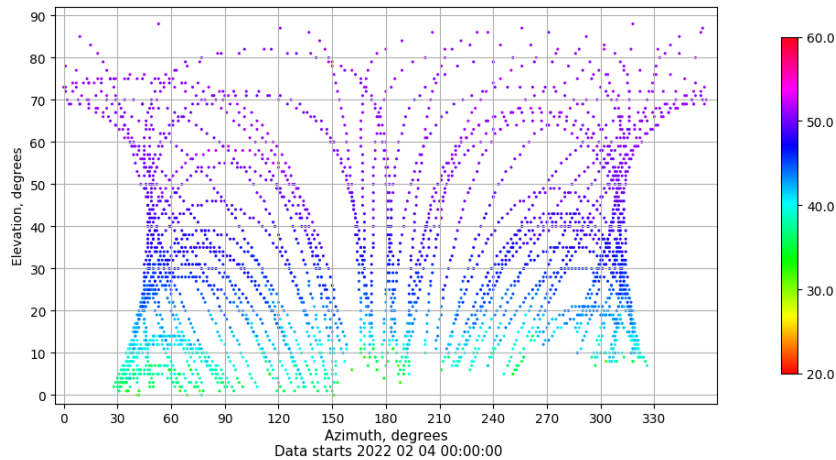
Multipath GPS L1 y L2

Skyplot for station MALL. Parameter M1C Data file MALL00ESP_R_2022035.xtr Skyplot for station MALL. Parameter M2W Data file MALL00ESP_R_2022035.xtr



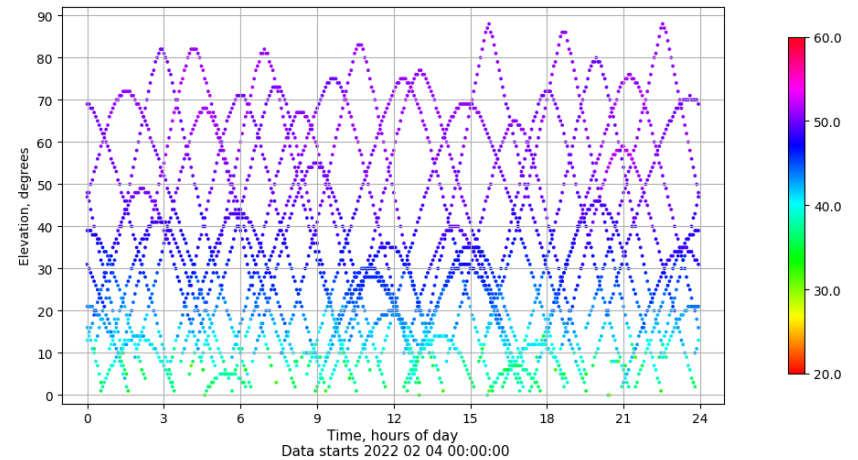
Azimut-Elevacion

Azimuth-elevation plot for station MALL. Signal to Noise S1C Data file MALL00ESP_R_2022035.xtr



Tiempo-Elevacion

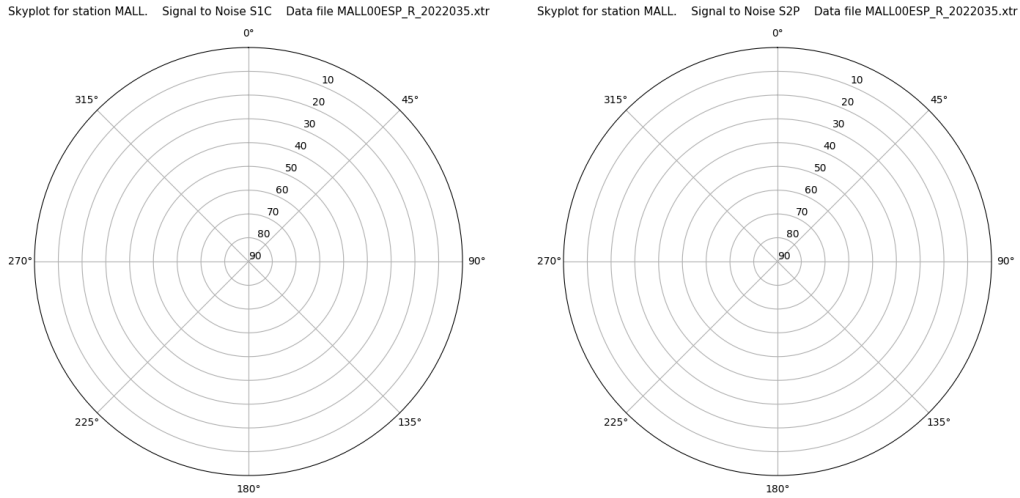
Time-elevation plot for station MALL. Signal to Noise S1C Data file MALL00ESP_R_2022035.xtr



Control de calidad GNSS GLO diario

Estacion: MALL
 Fecha: 2022 02 04
 Dia del año: 035

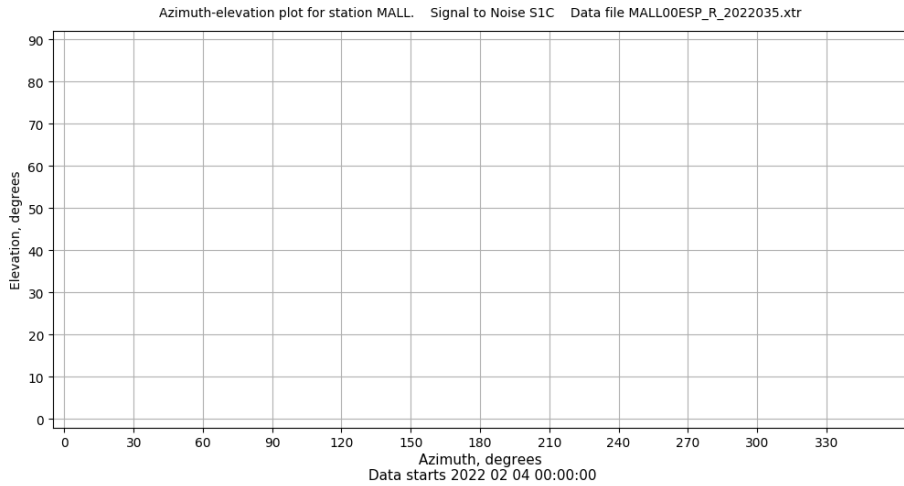
Señal-Ruido GLO L1 y L2



Data starts 2022 02 04 00:00:00

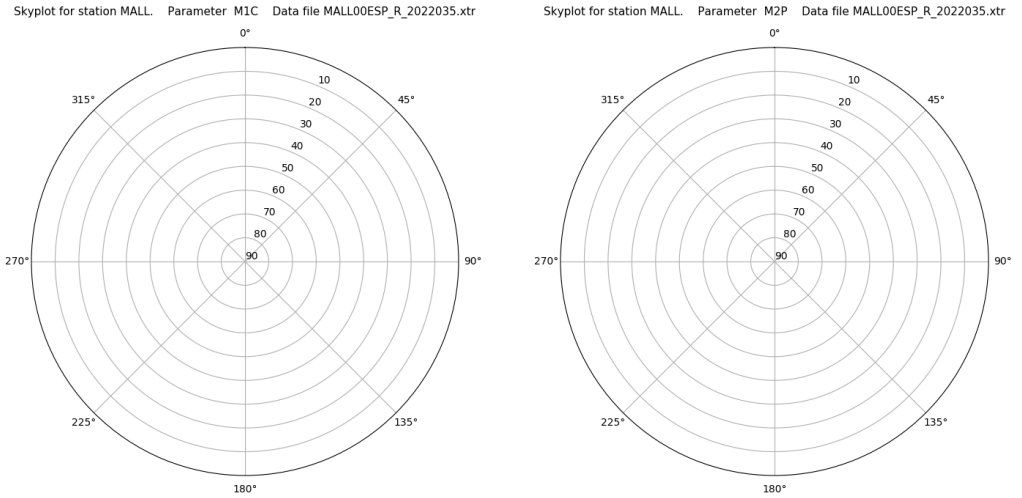
Data starts 2022 02 04 00:00:00

Azimut-Elevacion



Data starts 2022 02 04 00:00:00

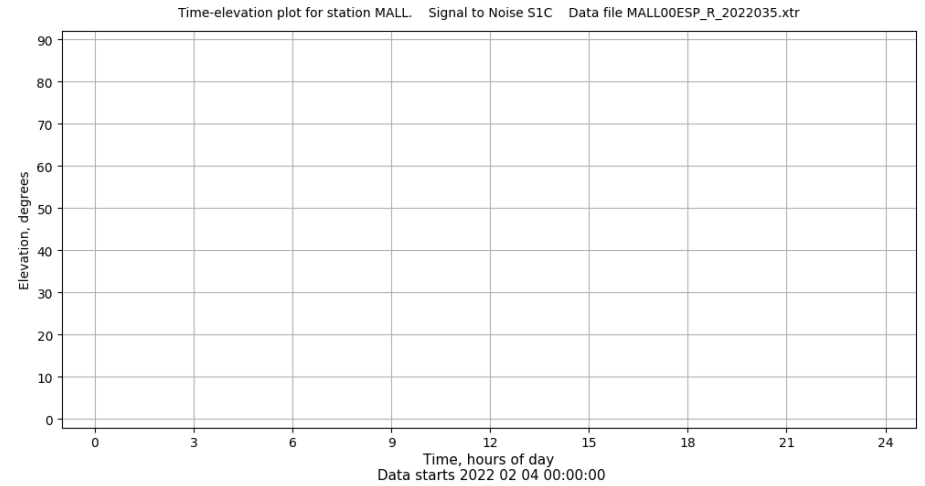
Multipath GLO L1 y L2



Data starts 2022 02 04 00:00:00

Data starts 2022 02 04 00:00:00

Tiempo-Elevacion



Data starts 2022 02 04 00:00:00

Control de calidad GNSS GAL diario

Estacion: MALL

Fecha: 2022 02 04

Día del año: 035

Señal-Ruido GAL E1 y E5

Multipath GAL E1 y E5

No existen gráficos para GAL