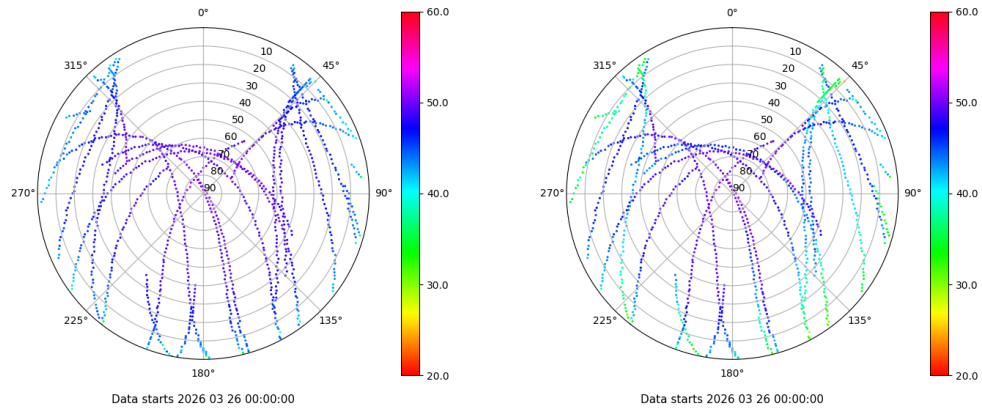


Control de calidad GNSS GPS diario

Estacion: MALA
 Fecha: 2026 03 26
 Dia del año: 085

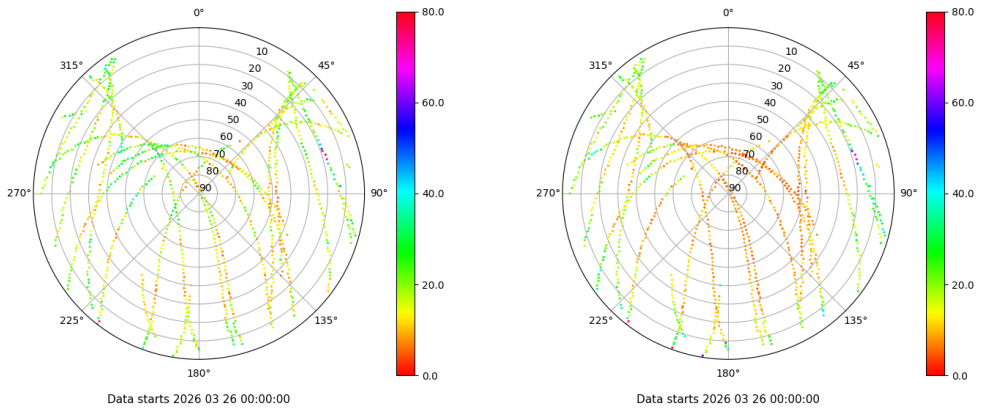
Señal-Ruido GPS L1 y L2

Skyplot for station MALA. Signal to Noise S1C Data file MALA00ESP_R_2026085.xtr Skyplot for station MALA. Signal to Noise S2W Data file MALA00ESP_R_2026085.xtr



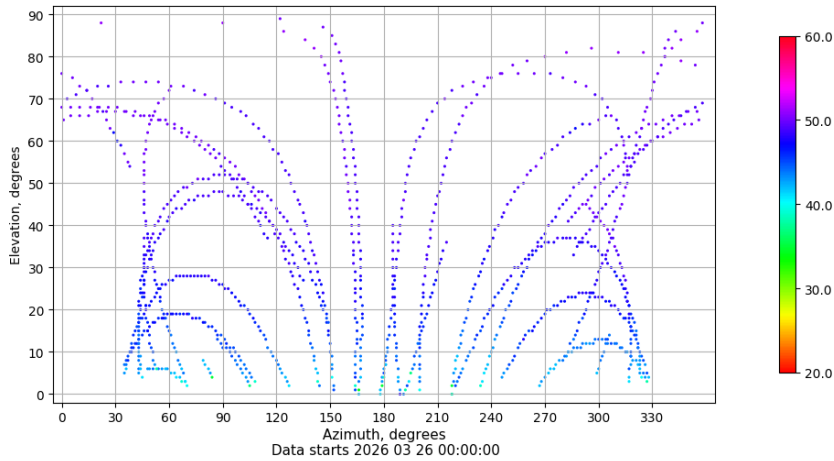
Multipath GPS L1 y L2

Skyplot for station MALA. Parameter M1C Data file MALA00ESP_R_2026085.xtr Skyplot for station MALA. Parameter M2W Data file MALA00ESP_R_2026085.xtr



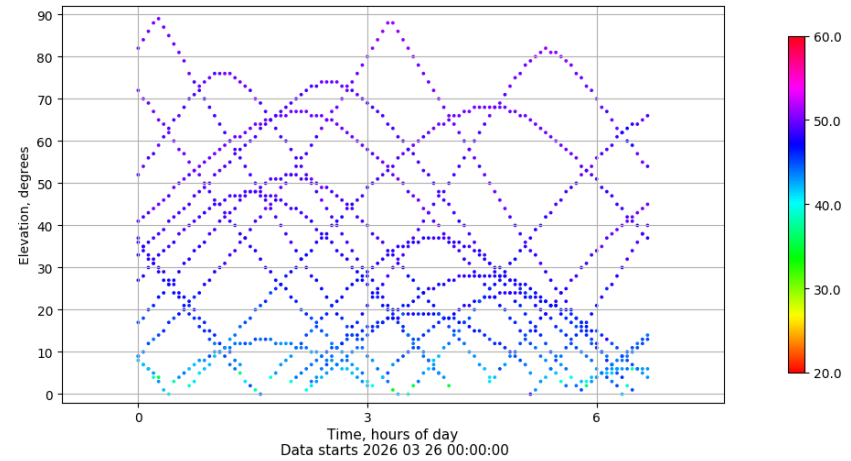
Azimuth-Elevacion

Azimuth-elevation plot for station MALA. Signal to Noise S1C Data file MALA00ESP_R_2026085.xtr



Tiempo-Elevacion

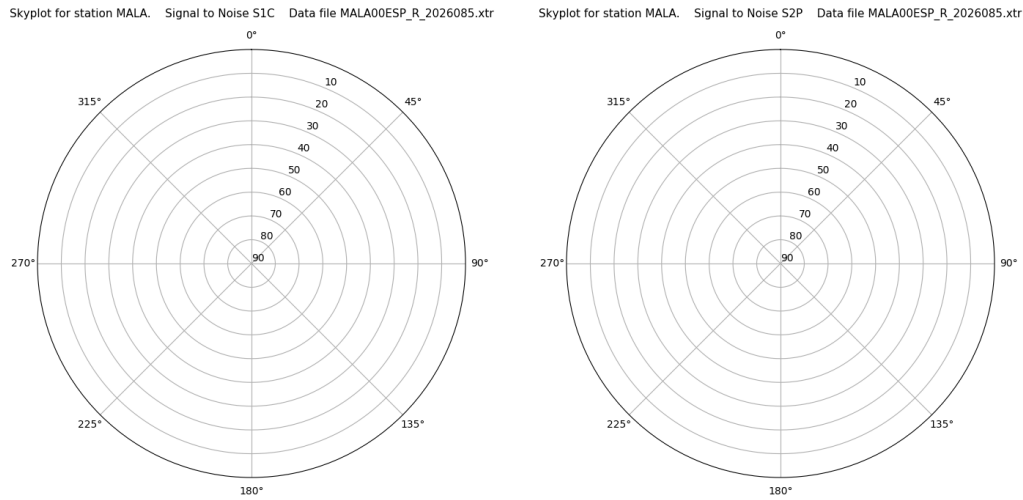
Time-elevation plot for station MALA. Signal to Noise S1C Data file MALA00ESP_R_2026085.xtr



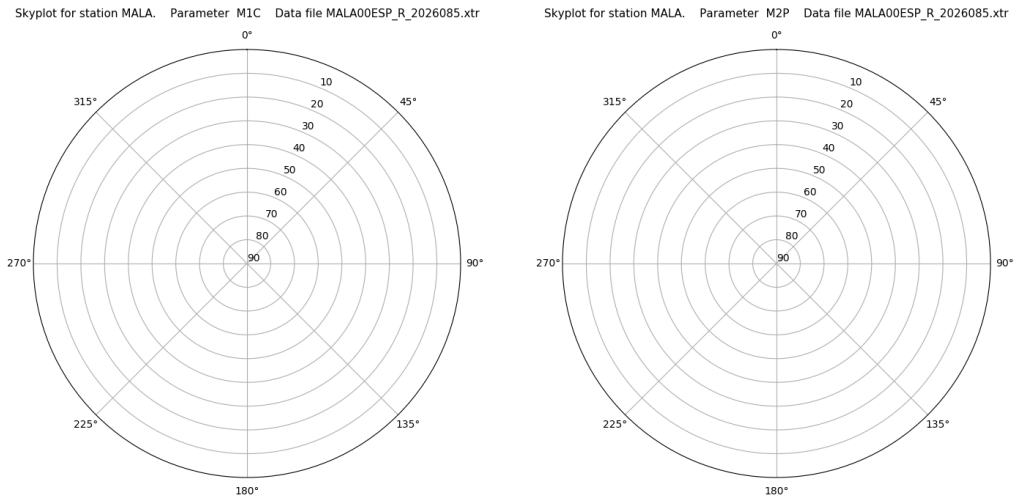
Control de calidad GNSS GLO diario

Estacion: MALA
 Fecha: 2026 03 26
 Dia del año: 085

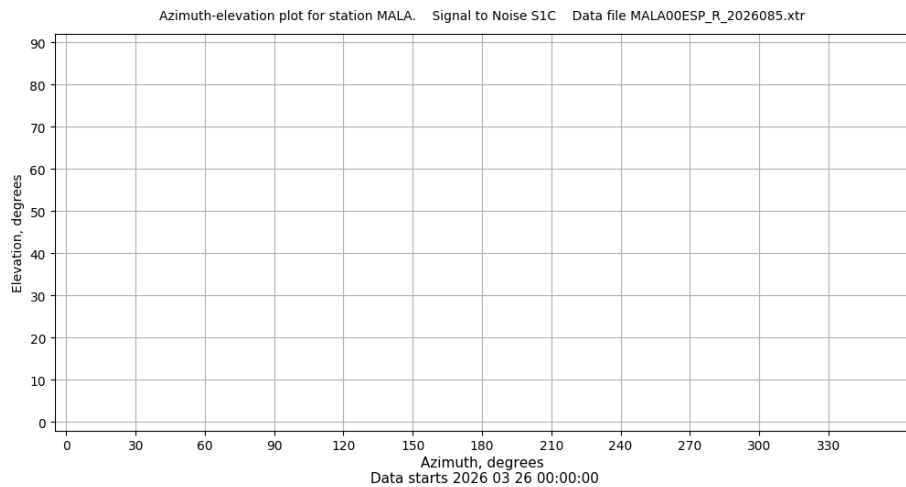
Señal-Ruido GLO L1 y L2



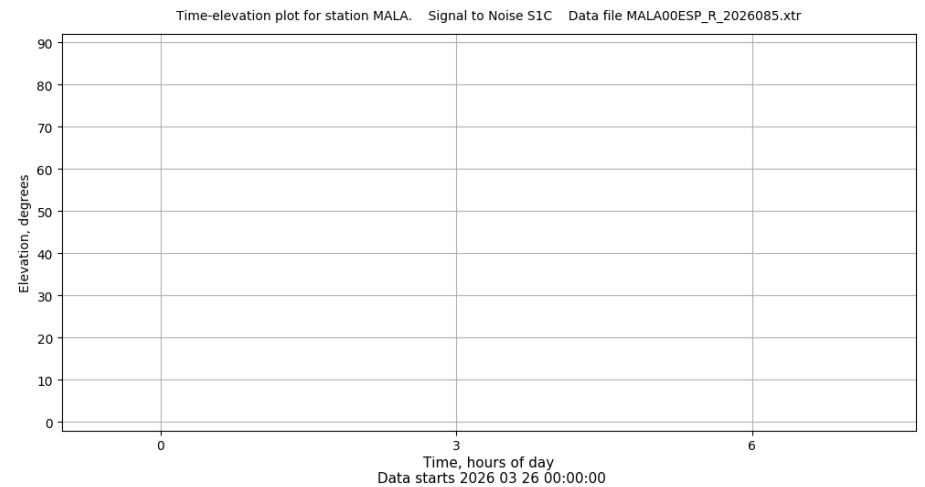
Multipath GLO L1 y L2



Azimut-Elevacion



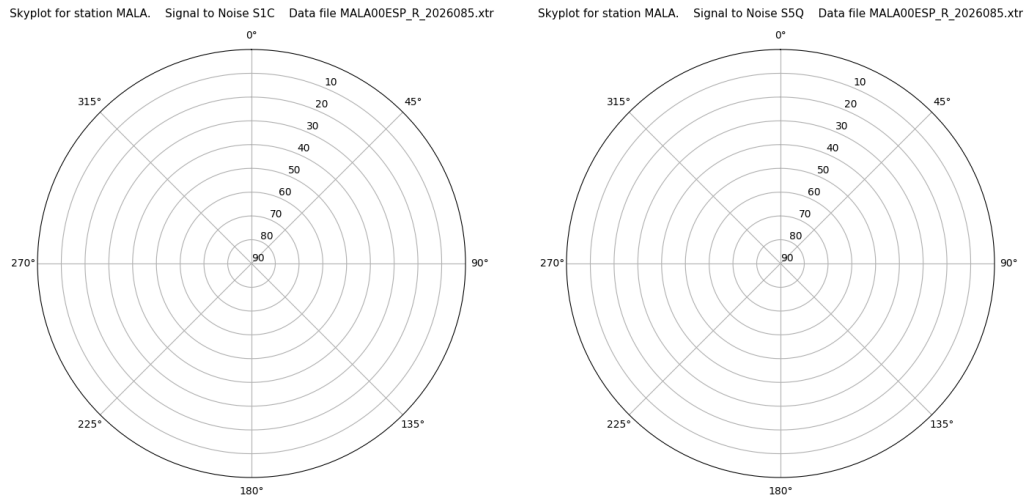
Tiempo-Elevacion



Control de calidad GNSS GAL diario

Estacion: MALA
 Fecha: 2026 03 26
 Dia del año: 085

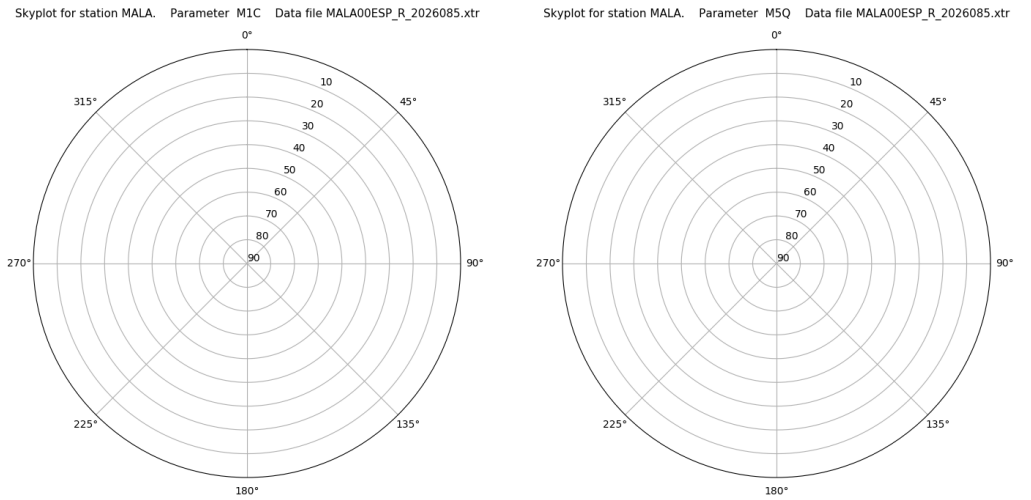
Señal-Ruido GAL E1 y E5



Data starts 2026 03 26 00:00:00

Data starts 2026 03 26 00:00:00

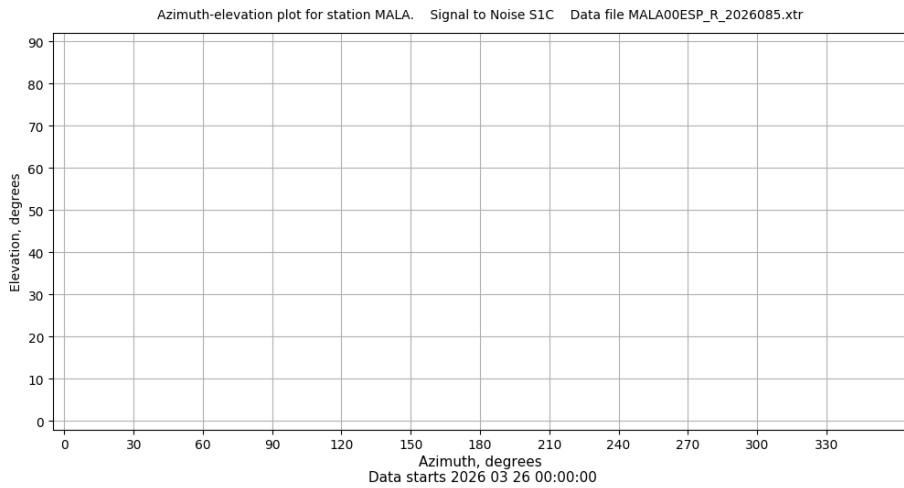
Multipath GAL E1 y E5



Data starts 2026 03 26 00:00:00

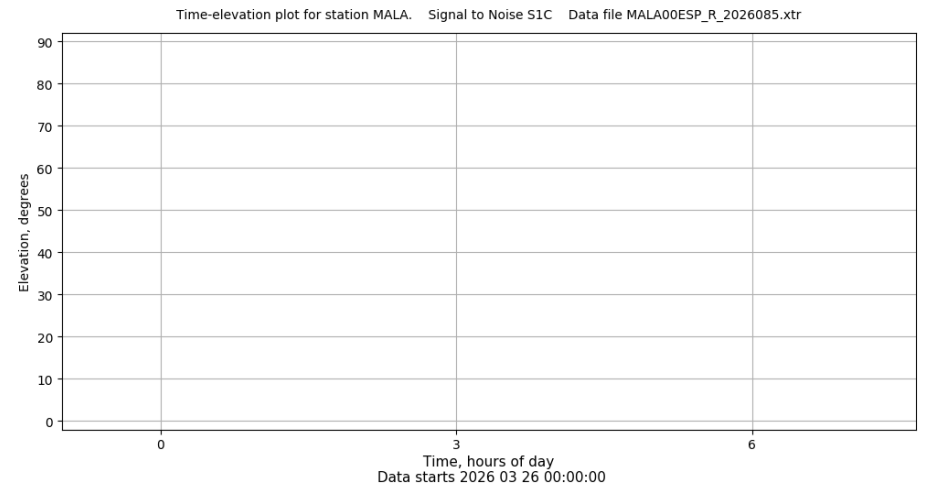
Data starts 2026 03 26 00:00:00

Azimut-Elevacion



Data starts 2026 03 26 00:00:00

Tiempo-Elevacion



Data starts 2026 03 26 00:00:00