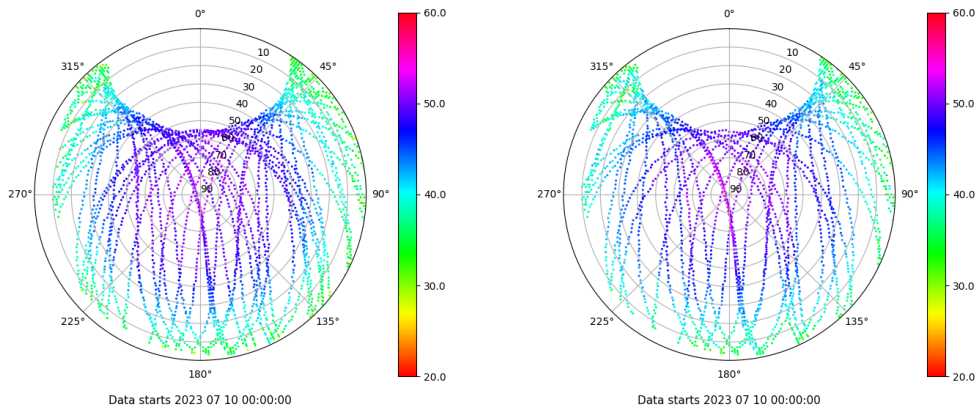


Control de calidad GNSS GPS diario

Estacion: LZ01
 Fecha: 2023 07 10
 Dia del año: 191

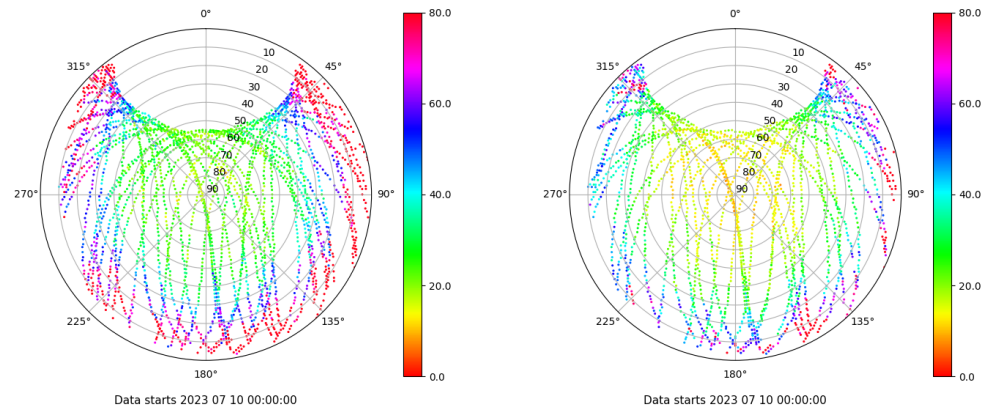
Señal-Ruido GPS L1 y L2

Skyplot for station LZ01. Signal to Noise S1C Data file LZ0100ESP_R_2023191.xtr Skyplot for station LZ01. Signal to Noise S2X Data file LZ0100ESP_R_2023191.xtr



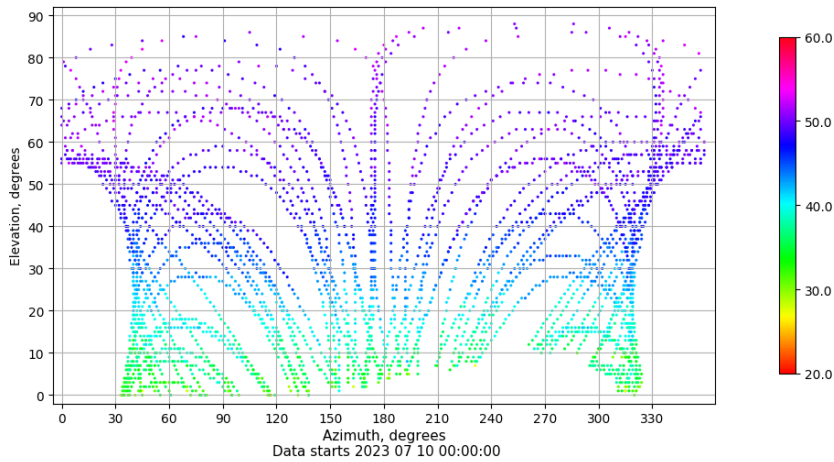
Multipath GPS L1 y L2

Skyplot for station LZ01. Parameter M1C Data file LZ0100ESP_R_2023191.xtr Skyplot for station LZ01. Parameter M2X Data file LZ0100ESP_R_2023191.xtr



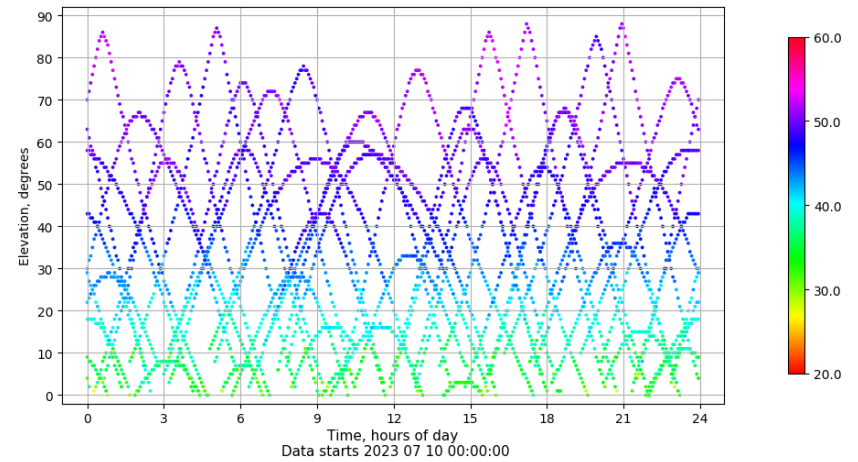
Azimuth-Elevacion

Azimuth-elevation plot for station LZ01. Signal to Noise S1C Data file LZ0100ESP_R_2023191.xtr



Tiempo-Elevacion

Time-elevation plot for station LZ01. Signal to Noise S1C Data file LZ0100ESP_R_2023191.xtr

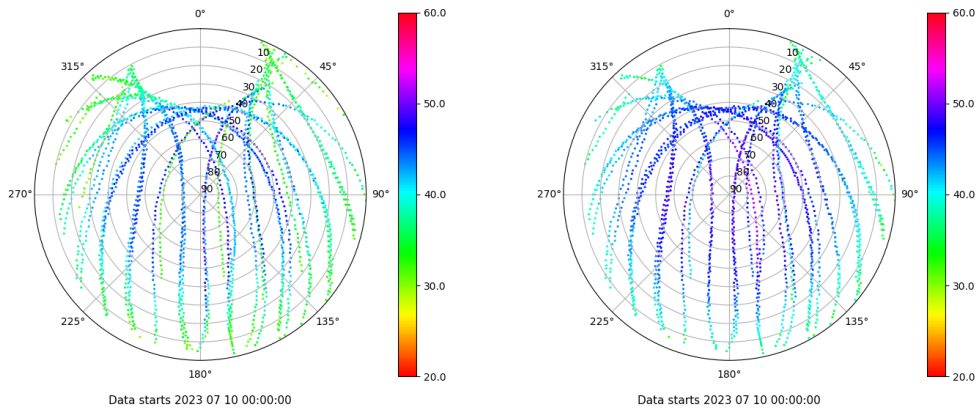


Control de calidad GNSS GLO diario

Estacion: LZ01
 Fecha: 2023 07 10
 Dia del año: 191

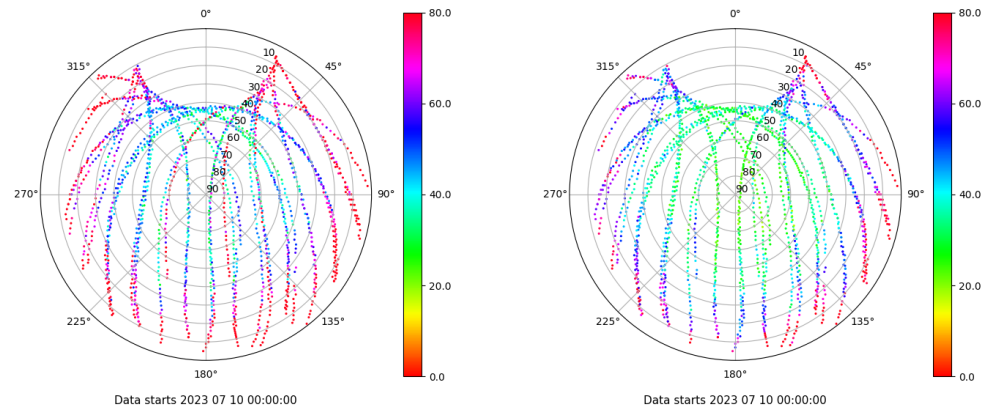
Señal-Ruido GLO L1 y L2

Skyplot for station LZ01. Signal to Noise S1C Data file LZ0100ESP_R_2023191.xtr Skyplot for station LZ01. Signal to Noise S2C Data file LZ0100ESP_R_2023191.xtr



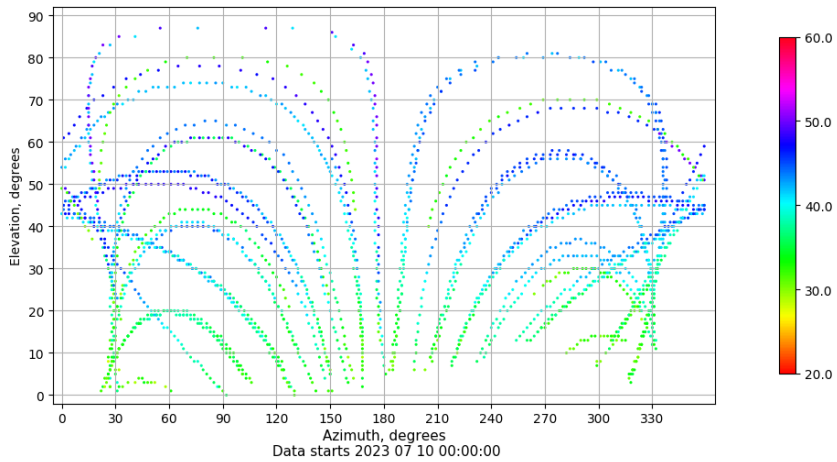
Multipath GLO L1 y L2

Skyplot for station LZ01. Parameter M1C Data file LZ0100ESP_R_2023191.xtr Skyplot for station LZ01. Parameter M2C Data file LZ0100ESP_R_2023191.xtr



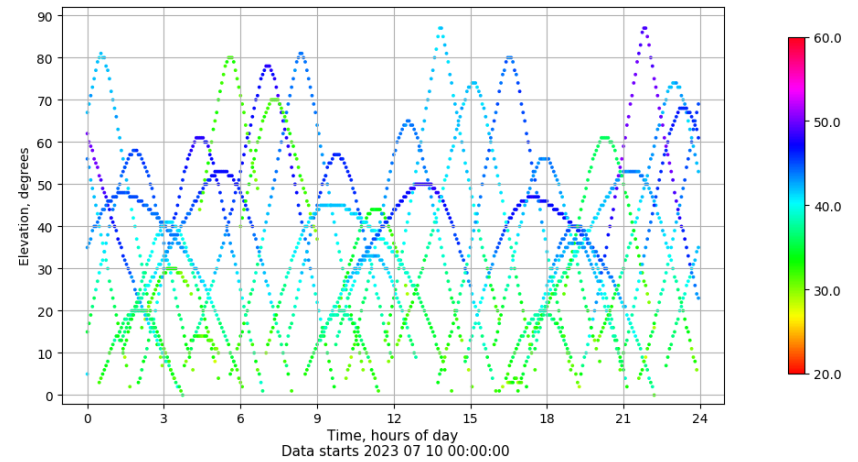
Azimuth-Elevacion

Azimuth-elevation plot for station LZ01. Signal to Noise S1C Data file LZ0100ESP_R_2023191.xtr



Tiempo-Elevacion

Time-elevation plot for station LZ01. Signal to Noise S1C Data file LZ0100ESP_R_2023191.xtr

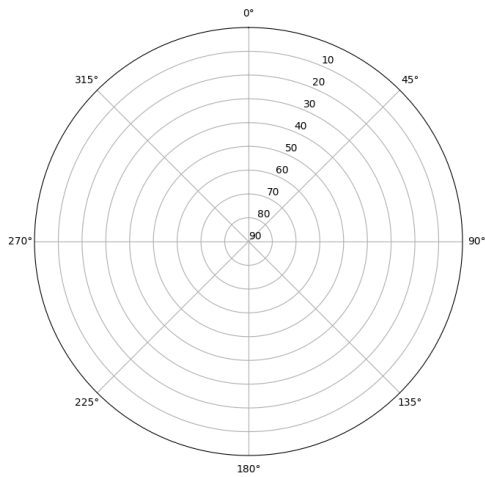


Control de calidad GNSS GAL diario

Estacion: LZ01
 Fecha: 2023 07 10
 Dia del año: 191

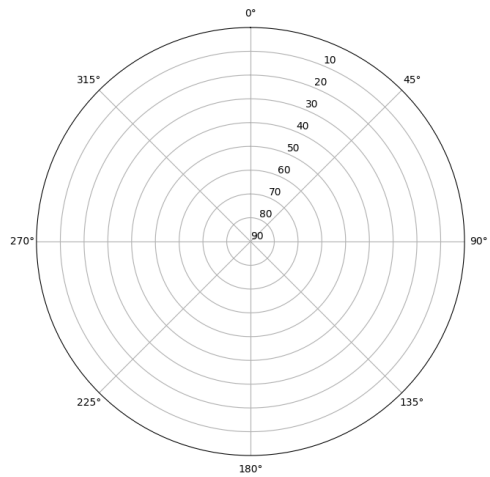
Señal-Ruido GAL E1 y E5

Skyplot for station LZ01. Signal to Noise S1X Data file LZ0100ESP_R_2023191.xtr



Data starts 2023 07 10 00:00:00

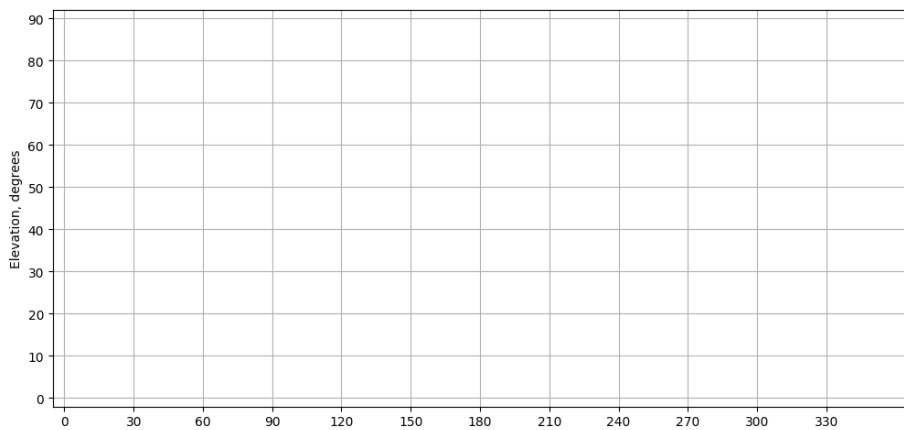
Skyplot for station LZ01. Signal to Noise S5X Data file LZ0100ESP_R_2023191.xtr



Data starts 2023 07 10 00:00:00

Azimut-Elevacion

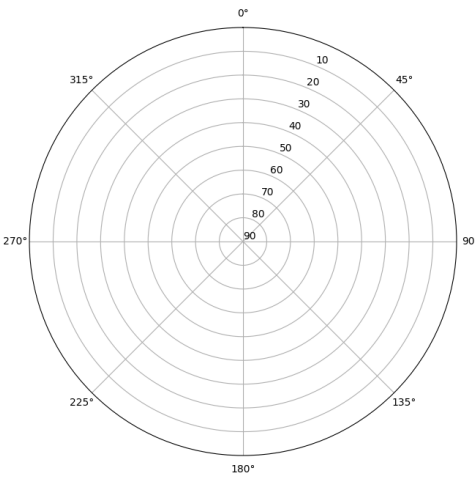
Azimuth-elevation plot for station LZ01. Signal to Noise S1X Data file LZ0100ESP_R_2023191.xtr



Data starts 2023 07 10 00:00:00

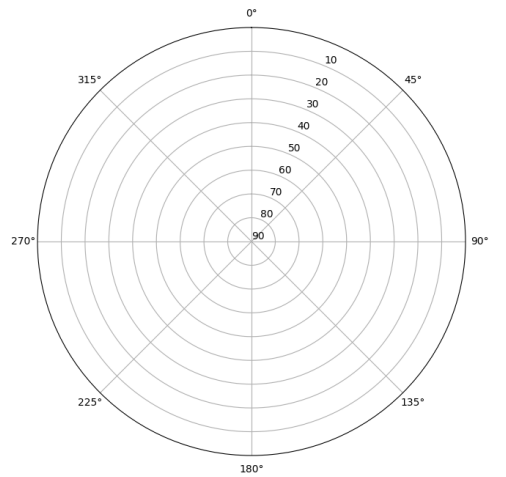
Multipath GAL E1 y E5

Skyplot for station LZ01. Parameter M1X Data file LZ0100ESP_R_2023191.xtr



Data starts 2023 07 10 00:00:00

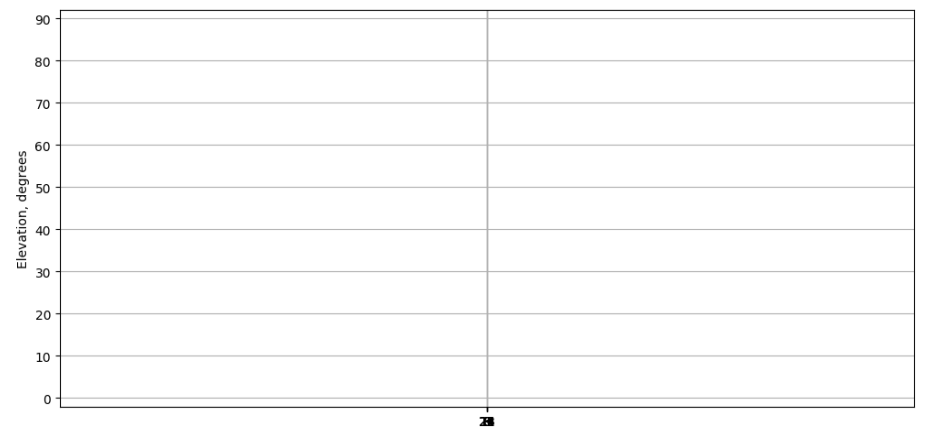
Skyplot for station LZ01. Parameter M5X Data file LZ0100ESP_R_2023191.xtr



Data starts 2023 07 10 00:00:00

Tiempo-Elevacion

Time-elevation plot for station LZ01. Signal to Noise S1X Data file LZ0100ESP_R_2023191.xtr



Data starts 2023 07 10 00:00:00