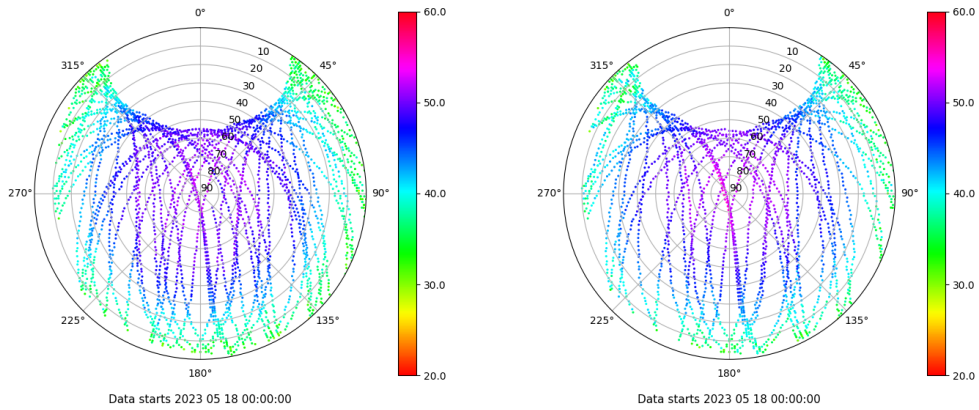


Control de calidad GNSS GPS diario

Estacion: LZ01
 Fecha: 2023 05 18
 Dia del año: 138

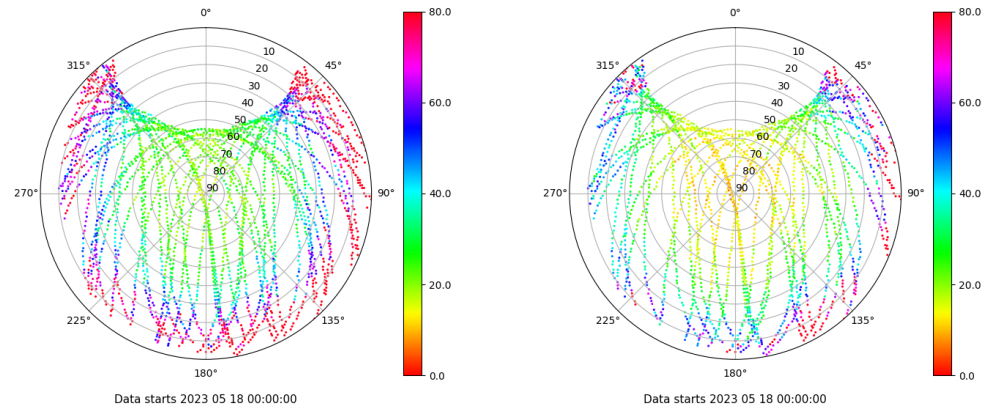
Señal-Ruido GPS L1 y L2

Skyplot for station LZ01. Signal to Noise S1C Data file LZ0100ESP_R_2023138.xtr Skyplot for station LZ01. Signal to Noise S2X Data file LZ0100ESP_R_2023138.xtr



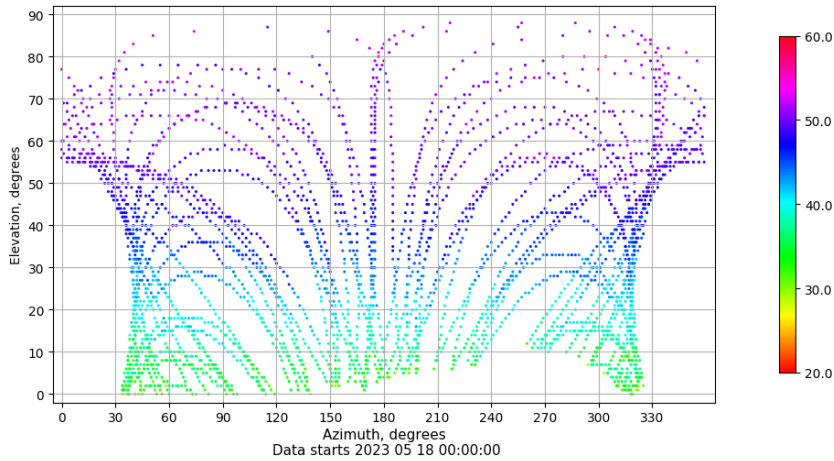
Multipath GPS L1 y L2

Skyplot for station LZ01. Parameter M1C Data file LZ0100ESP_R_2023138.xtr Skyplot for station LZ01. Parameter M2X Data file LZ0100ESP_R_2023138.xtr



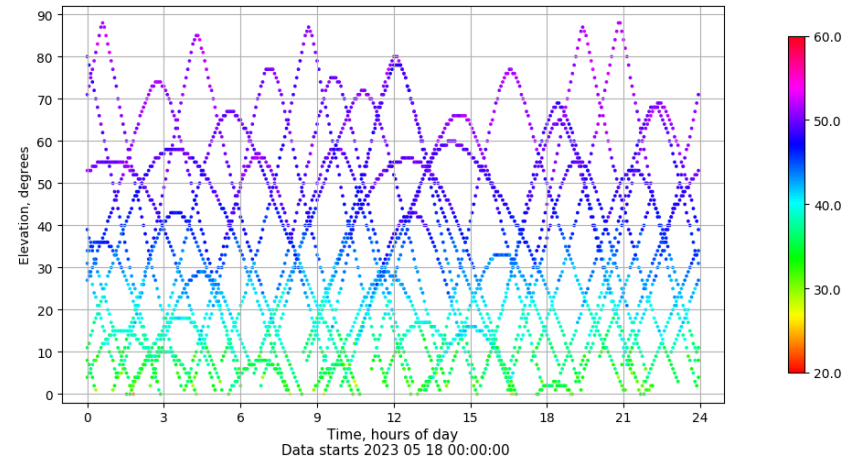
Azimuth-Elevacion

Azimuth-elevation plot for station LZ01. Signal to Noise S1C Data file LZ0100ESP_R_2023138.xtr



Tiempo-Elevacion

Time-elevation plot for station LZ01. Signal to Noise S1C Data file LZ0100ESP_R_2023138.xtr

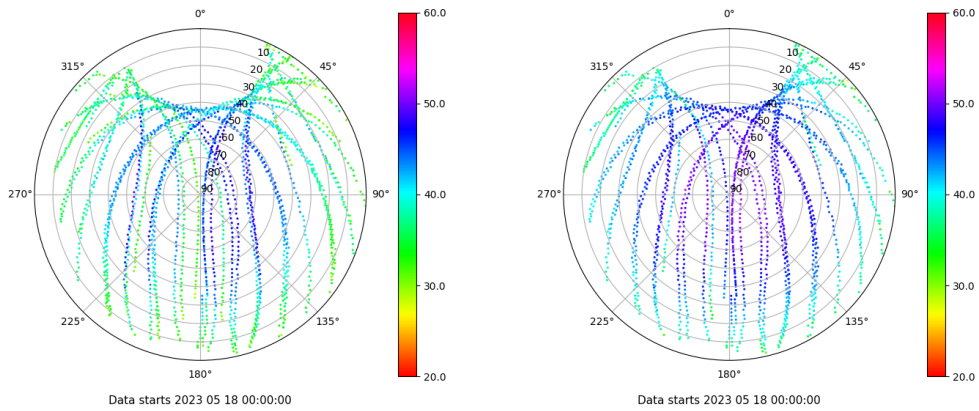


Control de calidad GNSS GLO diario

Estacion: LZ01
 Fecha: 2023 05 18
 Dia del año: 138

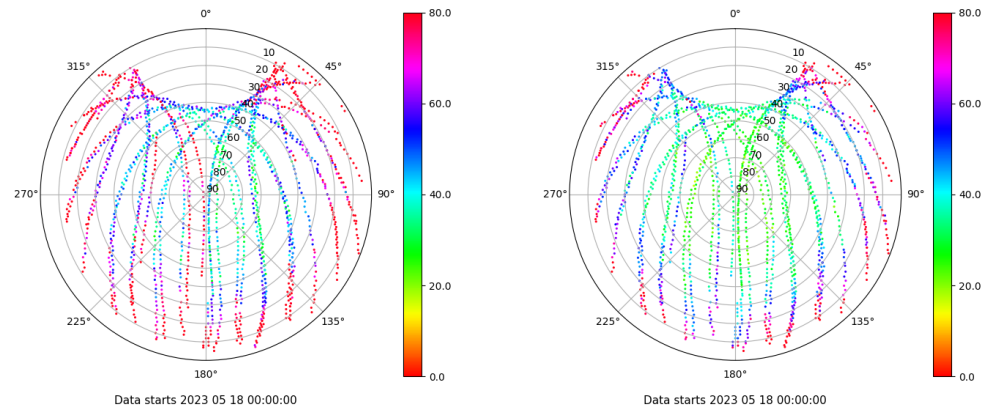
Señal-Ruido GLO L1 y L2

Skyplot for station LZ01. Signal to Noise S1C Data file LZ0100ESP_R_2023138.xtr Skyplot for station LZ01. Signal to Noise S2C Data file LZ0100ESP_R_2023138.xtr



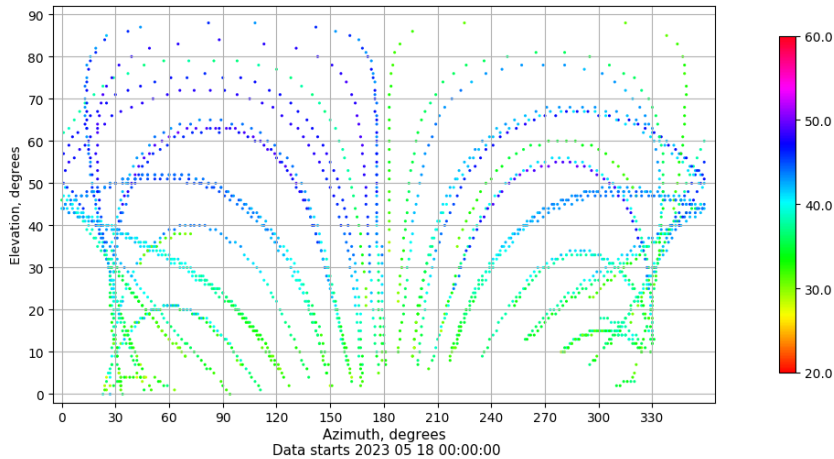
Multipath GLO L1 y L2

Skyplot for station LZ01. Parameter M1C Data file LZ0100ESP_R_2023138.xtr Skyplot for station LZ01. Parameter M2C Data file LZ0100ESP_R_2023138.xtr



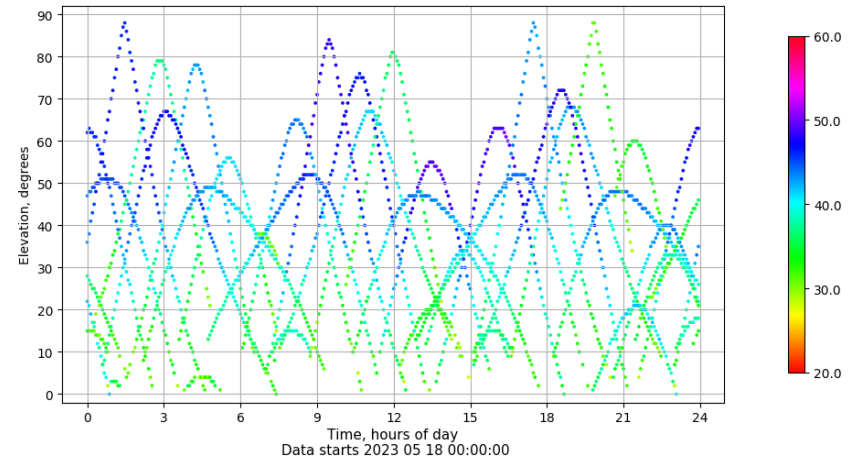
Azimuth-Elevacion

Azimuth-elevation plot for station LZ01. Signal to Noise S1C Data file LZ0100ESP_R_2023138.xtr



Tiempo-Elevacion

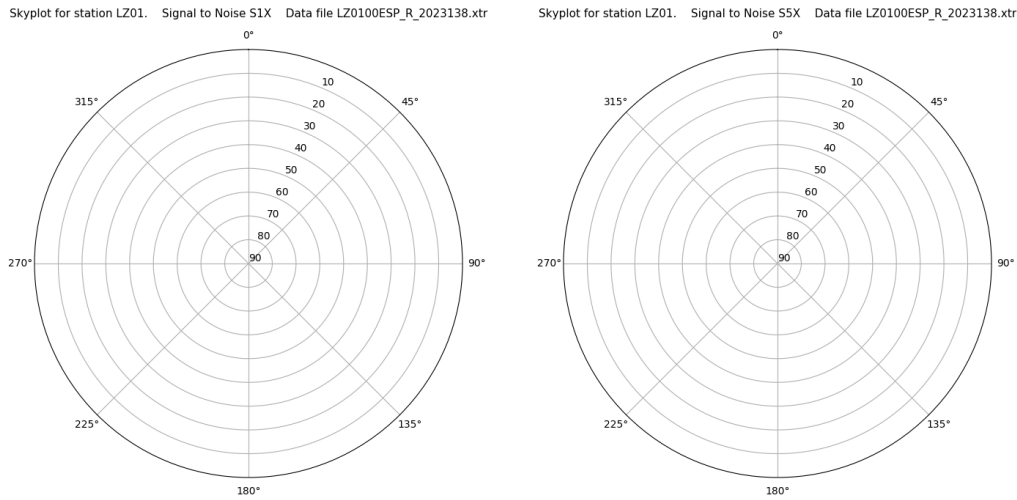
Time-elevation plot for station LZ01. Signal to Noise S1C Data file LZ0100ESP_R_2023138.xtr



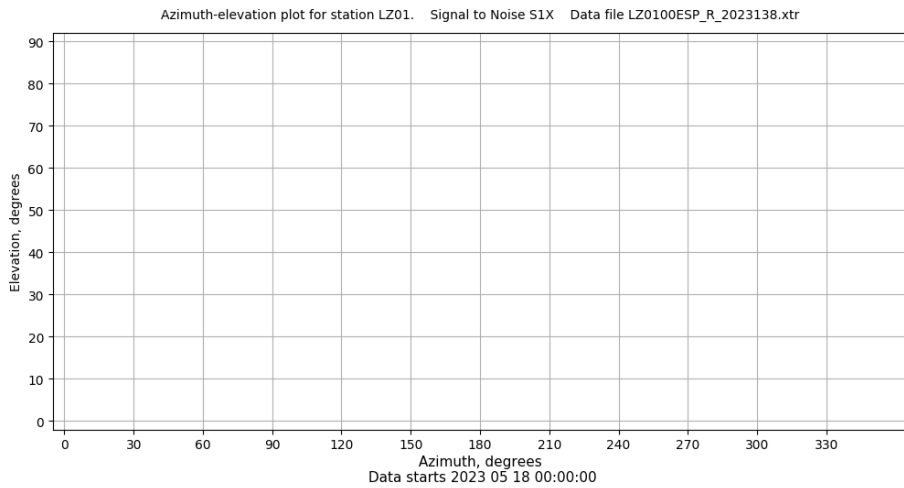
Control de calidad GNSS GAL diario

Estacion: LZ01
 Fecha: 2023 05 18
 Dia del año: 138

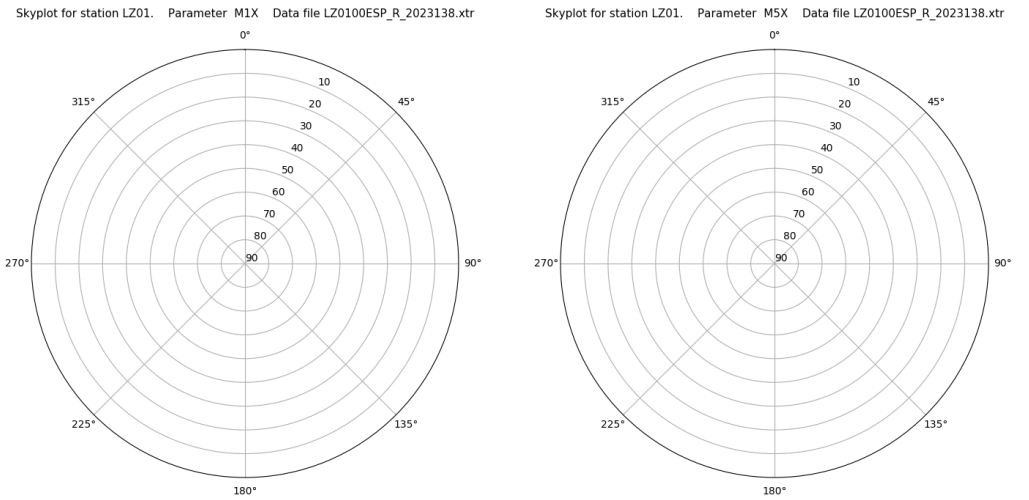
Señal-Ruido GAL E1 y E5



Azimut-Elevacion



Multipath GAL E1 y E5



Tiempo-Elevacion

