

# Control de calidad GNSS GPS diario

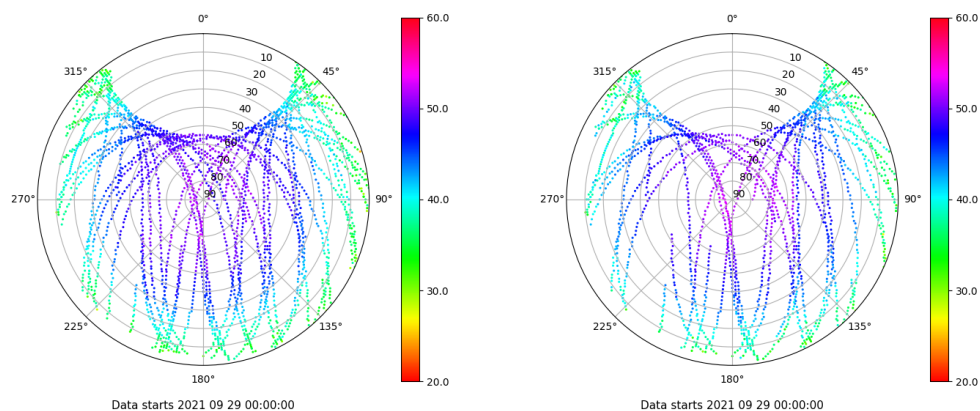
Estacion: LZ01

Fecha: 2021 09 29

Dia del año: 272

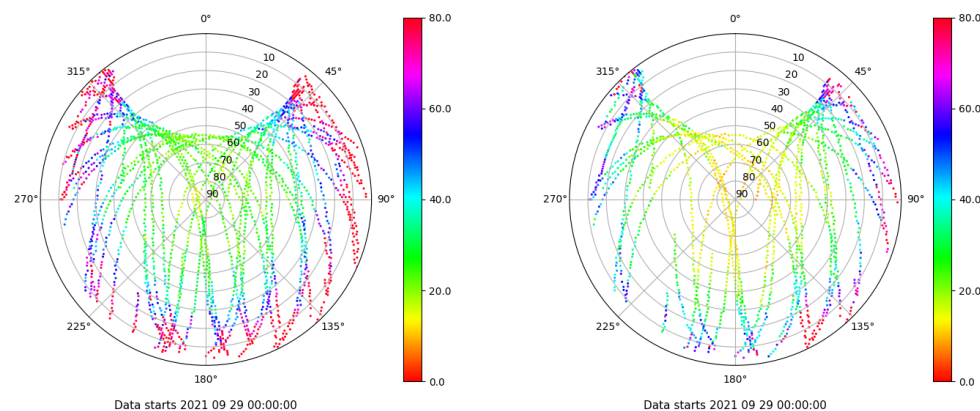
## Señal-Ruido GPS L1 y L2

Skyplot for station LZ01. Signal to Noise S1C Data file LZ0100ESP\_R\_2021272.xtr Skyplot for station LZ01. Signal to Noise S2X Data file LZ0100ESP\_R\_2021272.xtr



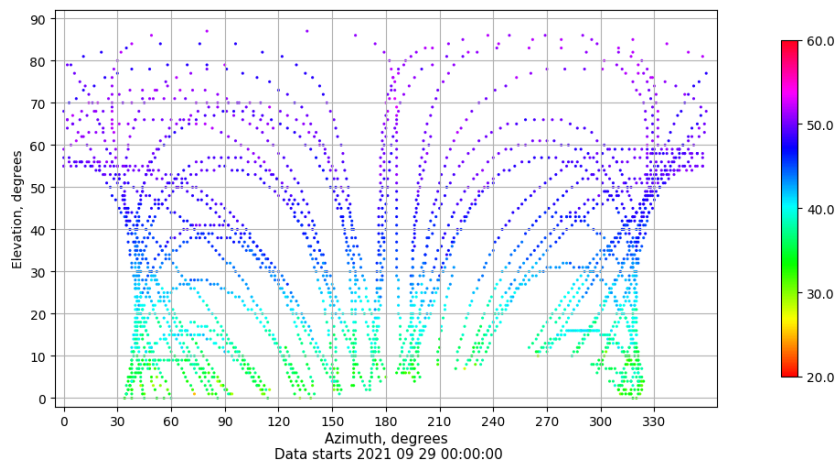
## Multipath GPS L1 y L2

Skyplot for station LZ01. Parameter M1C Data file LZ0100ESP\_R\_2021272.xtr Skyplot for station LZ01. Parameter M2X Data file LZ0100ESP\_R\_2021272.xtr



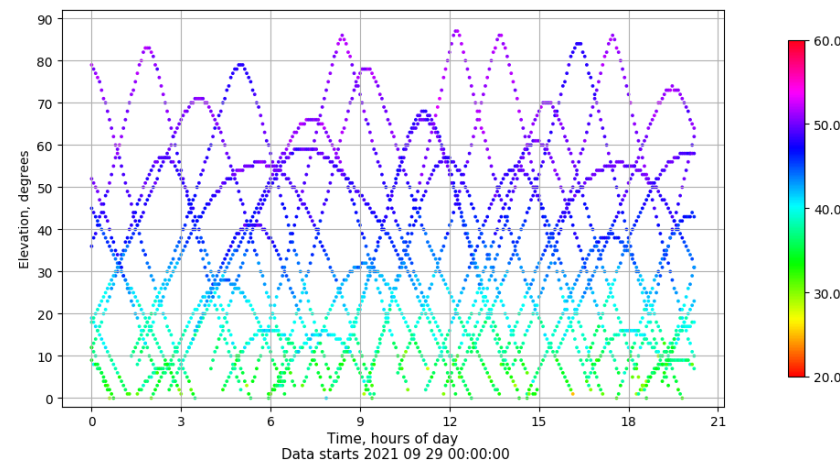
## Azimut-Elevacion

Azimuth-elevation plot for station LZ01. Signal to Noise S1C Data file LZ0100ESP\_R\_2021272.xtr



## Tiempo-Elevacion

Time-elevation plot for station LZ01. Signal to Noise S1C Data file LZ0100ESP\_R\_2021272.xtr



# Control de calidad GNSS GLO diario

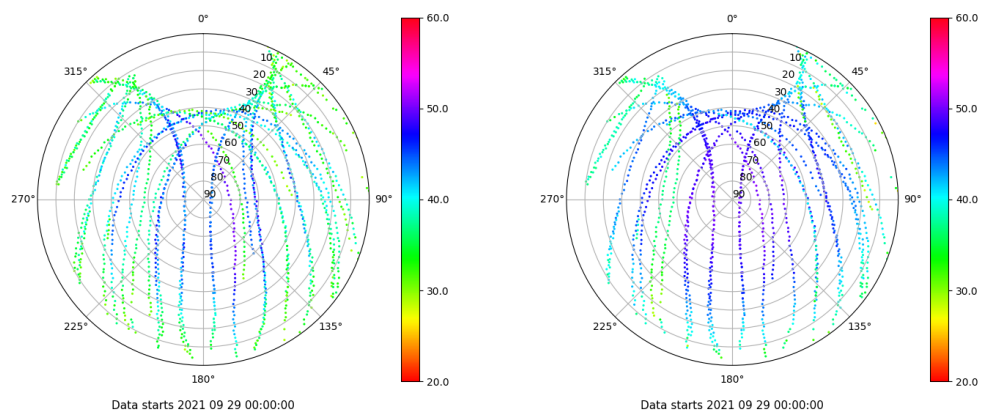
Estacion: LZ01

Fecha: 2021 09 29

Dia del año: 272

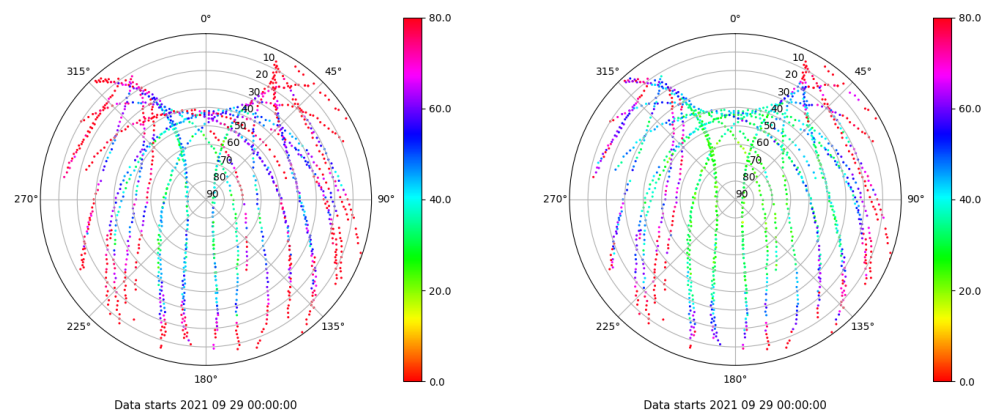
## Señal-Ruido GLO L1 y L2

Skyplot for station LZ01. Signal to Noise S1C Data file LZ0100ESP\_R\_2021272.xtr Skyplot for station LZ01. Signal to Noise S2C Data file LZ0100ESP\_R\_2021272.xtr



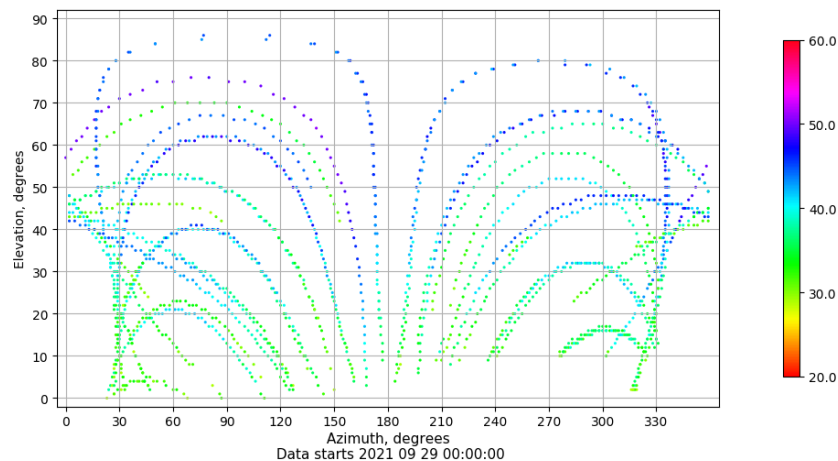
## Multipath GLO L1 y L2

Skyplot for station LZ01. Parameter M1C Data file LZ0100ESP\_R\_2021272.xtr Skyplot for station LZ01. Parameter M2C Data file LZ0100ESP\_R\_2021272.xtr



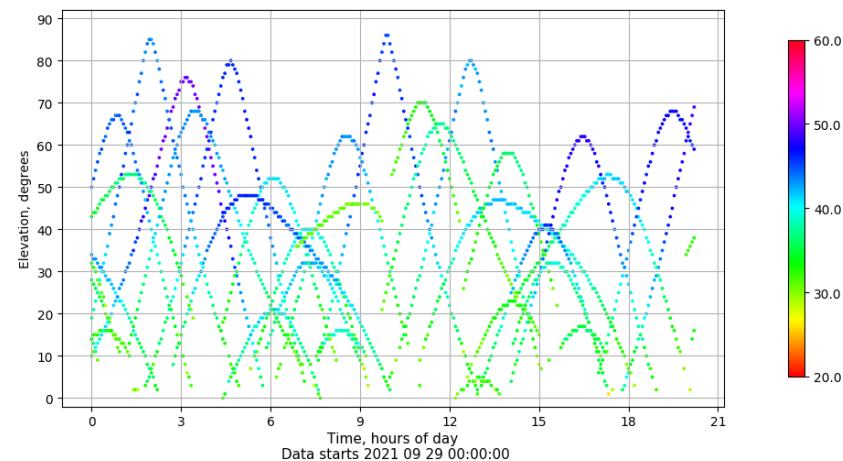
## Azimut-Elevacion

Azimuth-elevation plot for station LZ01. Signal to Noise S1C Data file LZ0100ESP\_R\_2021272.xtr



## Tiempo-Elevacion

Time-elevation plot for station LZ01. Signal to Noise S1C Data file LZ0100ESP\_R\_2021272.xtr



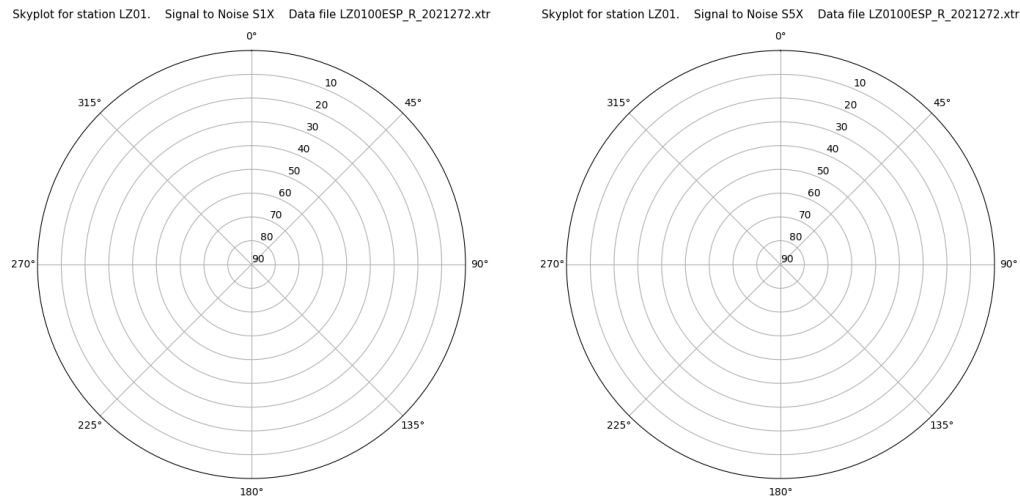
# Control de calidad GNSS GAL diario

Estacion: LZ01

Fecha: 2021 09 29

Día del año: 272

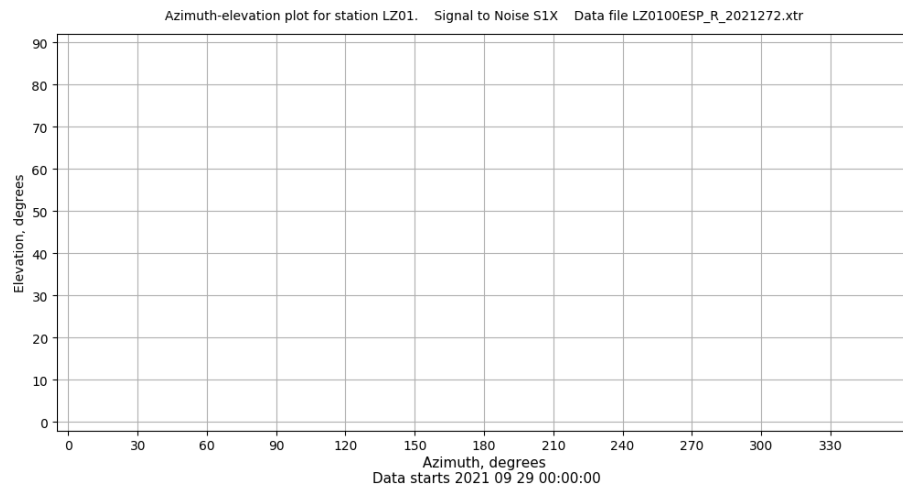
## Señal-Ruido GAL E1 y E5



Data starts 2021 09 29 00:00:00

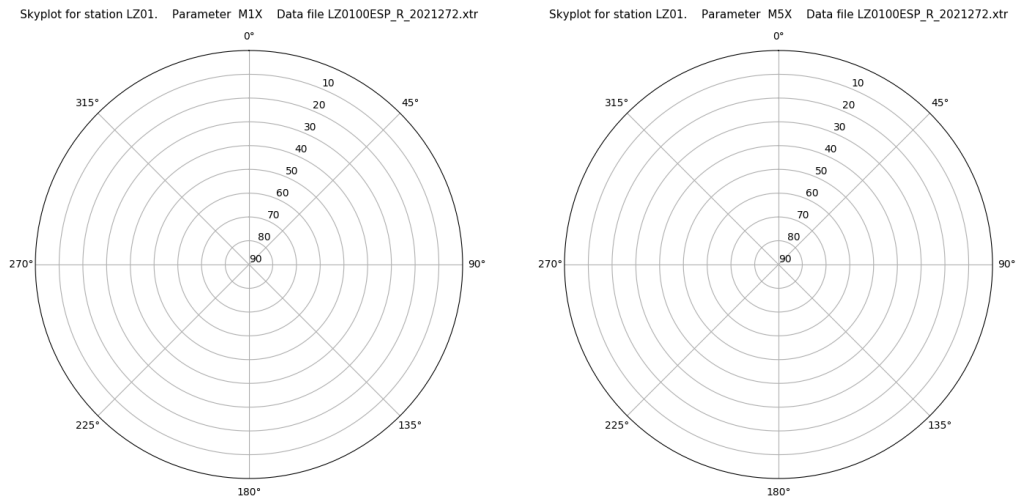
Data starts 2021 09 29 00:00:00

## Azimut-Elevacion



Data starts 2021 09 29 00:00:00

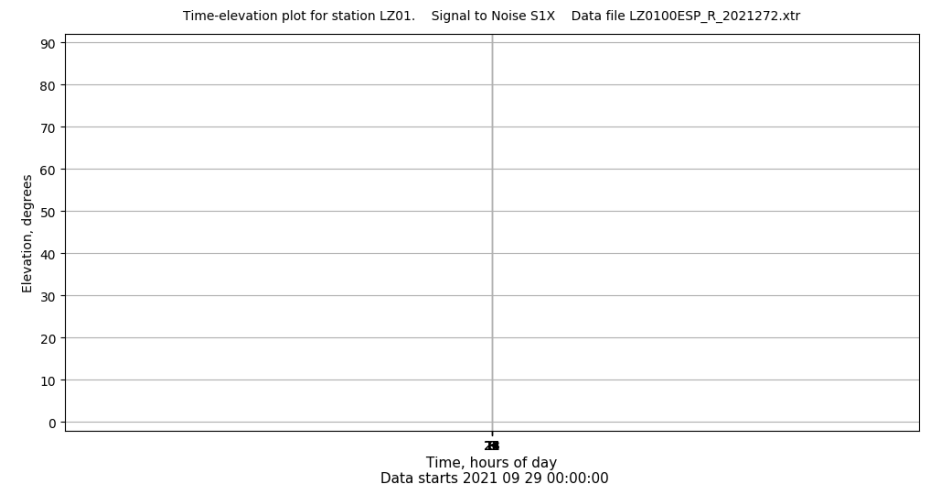
## Multipath GAL E1 y E5



Data starts 2021 09 29 00:00:00

Data starts 2021 09 29 00:00:00

## Tiempo-Elevacion



Data starts 2021 09 29 00:00:00