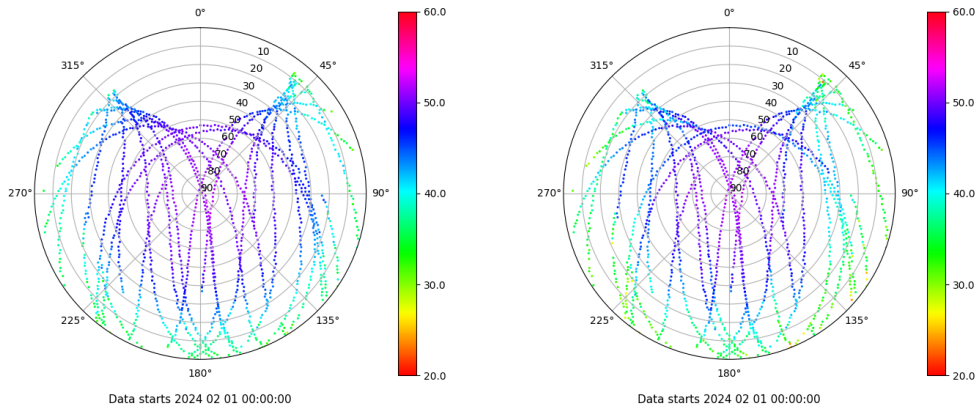


# Control de calidad GNSS GPS diario

Estacion: LRES  
 Fecha: 2024 02 01  
 Dia del año: 032

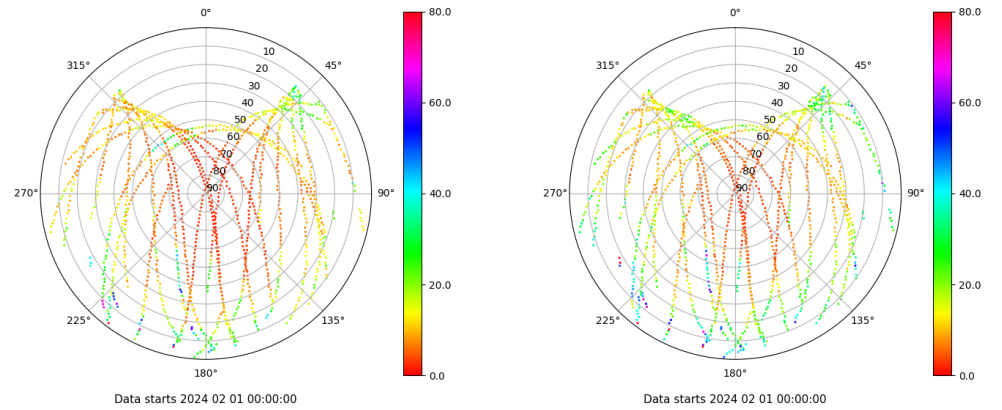
## Señal-Ruido GPS L1 y L2

Skyplot for station LRES. Signal to Noise S1C Data file LRES00ESP\_R\_2024032.xtr Skyplot for station LRES. Signal to Noise S2W Data file LRES00ESP\_R\_2024032.xtr



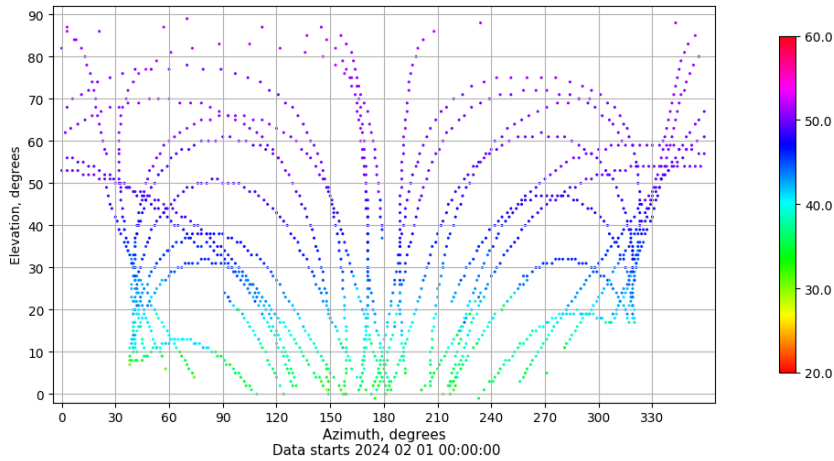
## Multipath GPS L1 y L2

Skyplot for station LRES. Parameter M1C Data file LRES00ESP\_R\_2024032.xtr Skyplot for station LRES. Parameter M2W Data file LRES00ESP\_R\_2024032.xtr



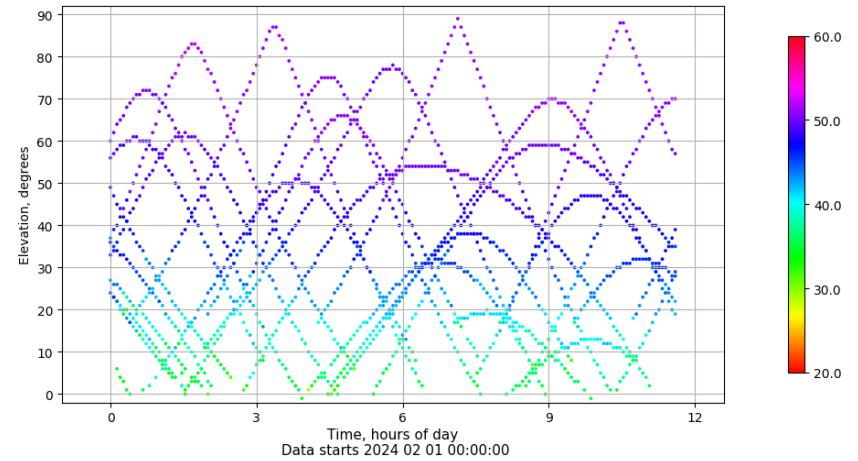
## Azimut-Elevacion

Azimuth-elevation plot for station LRES. Signal to Noise S1C Data file LRES00ESP\_R\_2024032.xtr



## Tiempo-Elevacion

Time-elevation plot for station LRES. Signal to Noise S1C Data file LRES00ESP\_R\_2024032.xtr

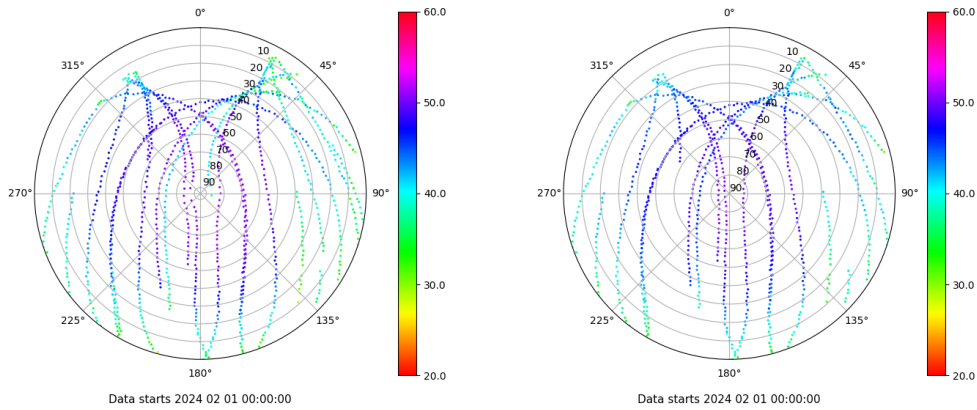


# Control de calidad GNSS GLO diario

Estacion: LRES  
 Fecha: 2024 02 01  
 Día del año: 032

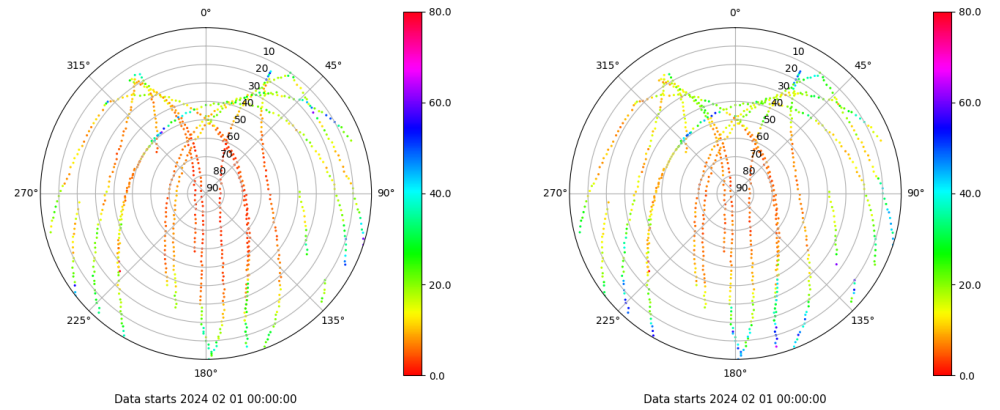
## Señal-Ruido GLO L1 y L2

Skyplot for station LRES. Signal to Noise S1C Data file LRES00ESP\_R\_2024032.xtr Skyplot for station LRES. Signal to Noise S2P Data file LRES00ESP\_R\_2024032.xtr



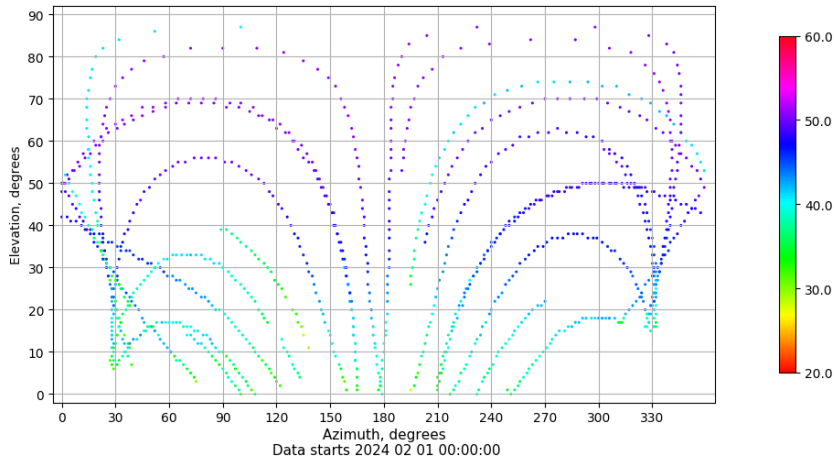
## Multipath GLO L1 y L2

Skyplot for station LRES. Parameter M1C Data file LRES00ESP\_R\_2024032.xtr Skyplot for station LRES. Parameter M2P Data file LRES00ESP\_R\_2024032.xtr



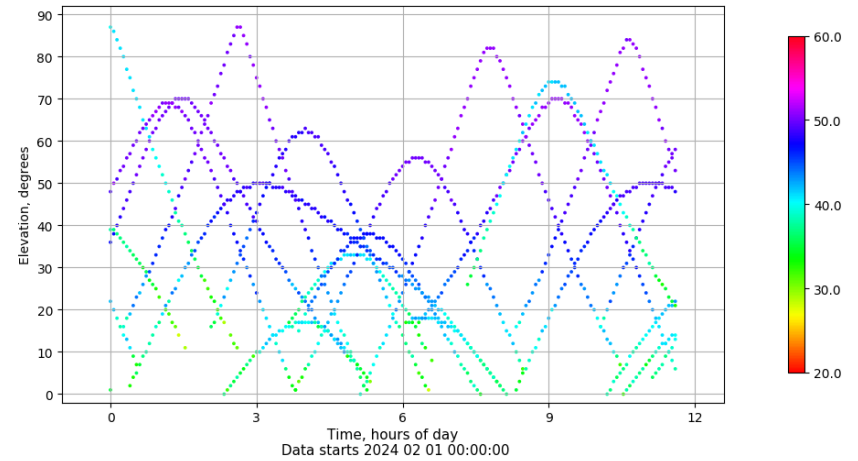
## Azimuth-Elevacion

Azimuth-elevation plot for station LRES. Signal to Noise S1C Data file LRES00ESP\_R\_2024032.xtr



## Tiempo-Elevacion

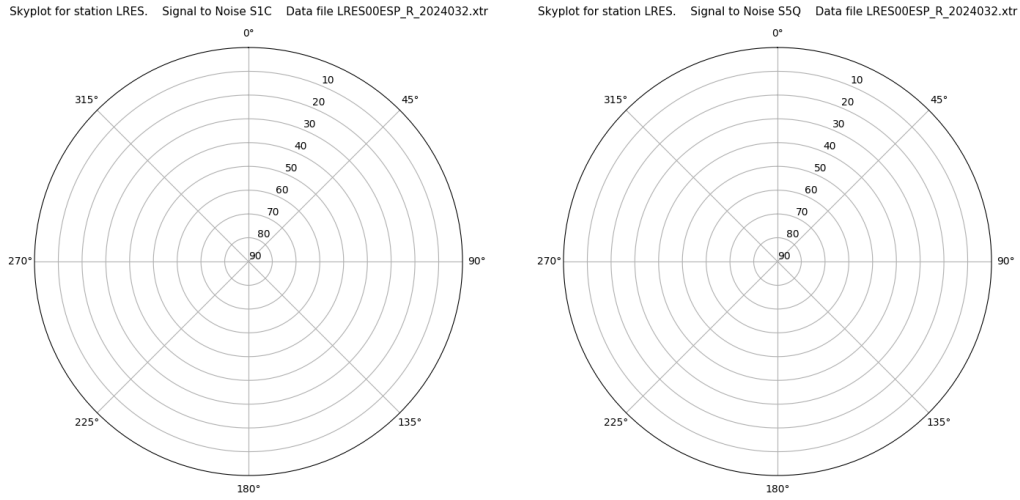
Time-elevation plot for station LRES. Signal to Noise S1C Data file LRES00ESP\_R\_2024032.xtr



# Control de calidad GNSS GAL diario

Estacion: LRES  
 Fecha: 2024 02 01  
 Dia del año: 032

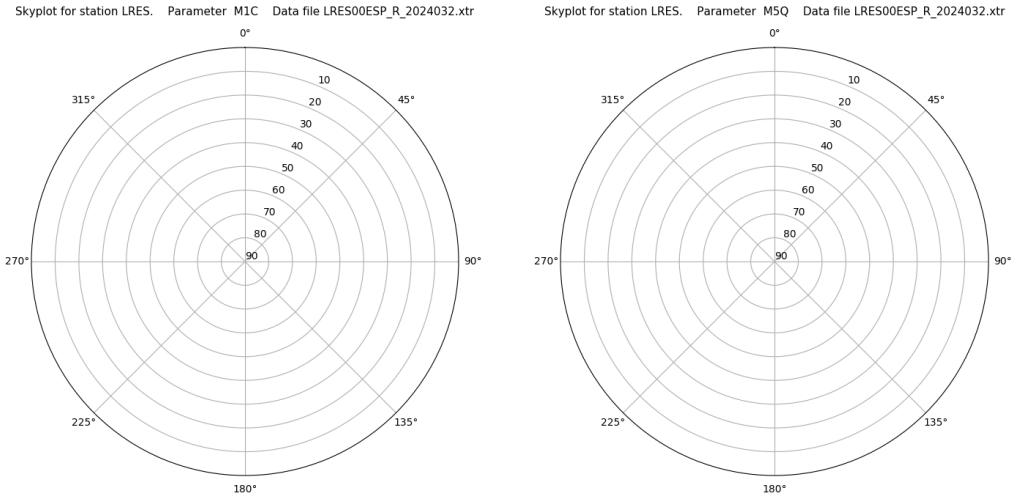
## Señal-Ruido GAL E1 y E5



Data starts 2024 02 01 00:00:00

Data starts 2024 02 01 00:00:00

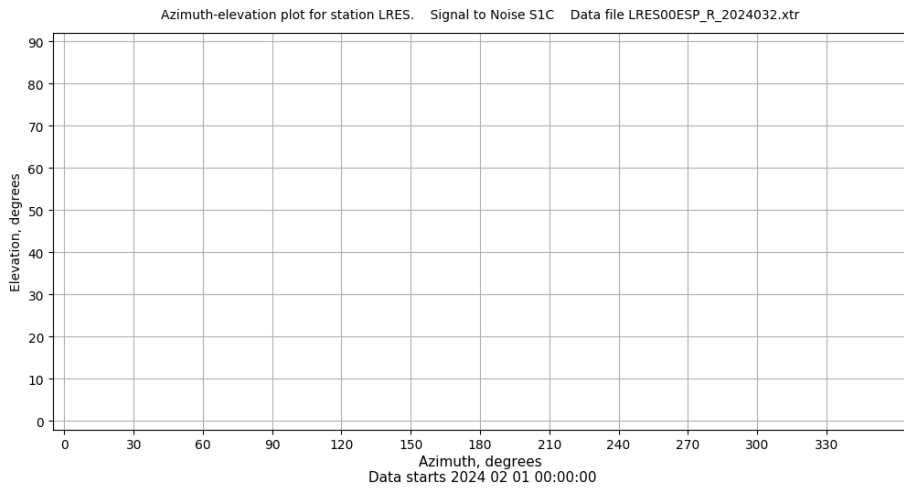
## Multipath GAL E1 y E5



Data starts 2024 02 01 00:00:00

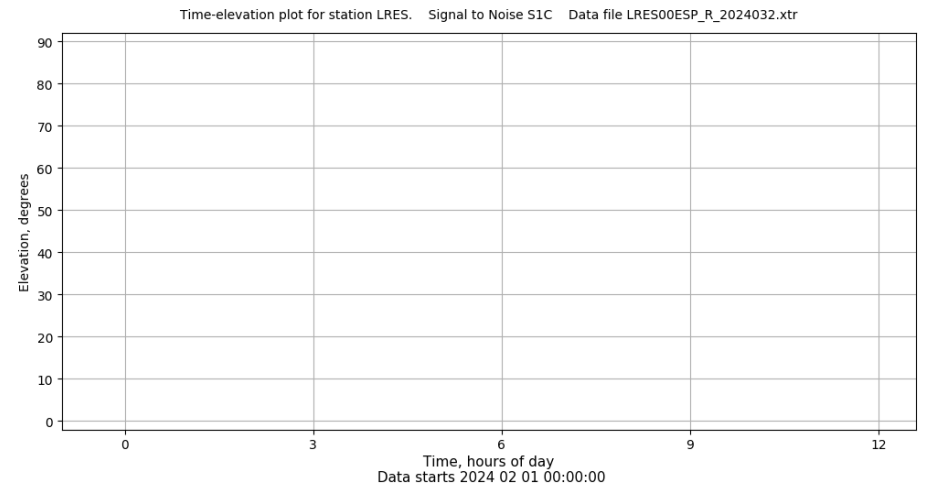
Data starts 2024 02 01 00:00:00

## Azimut-Elevacion



Data starts 2024 02 01 00:00:00

## Tiempo-Elevacion



Data starts 2024 02 01 00:00:00