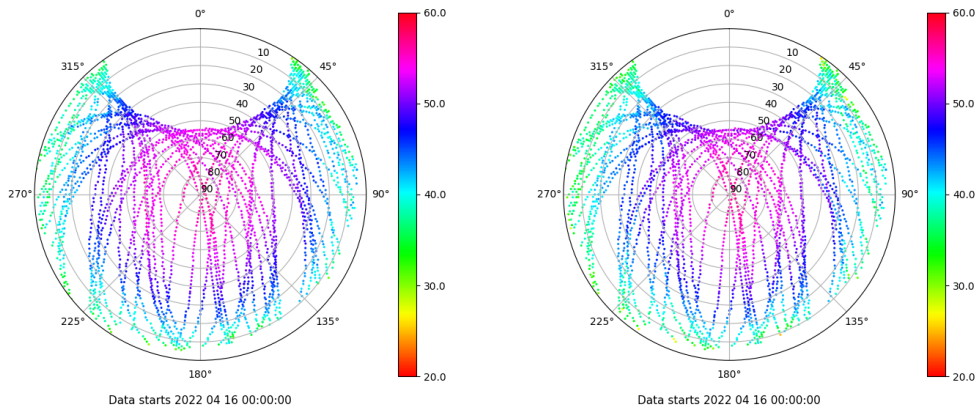


Control de calidad GNSS GPS diario

Estacion: LPAL
 Fecha: 2022 04 16
 Dia del año: 106

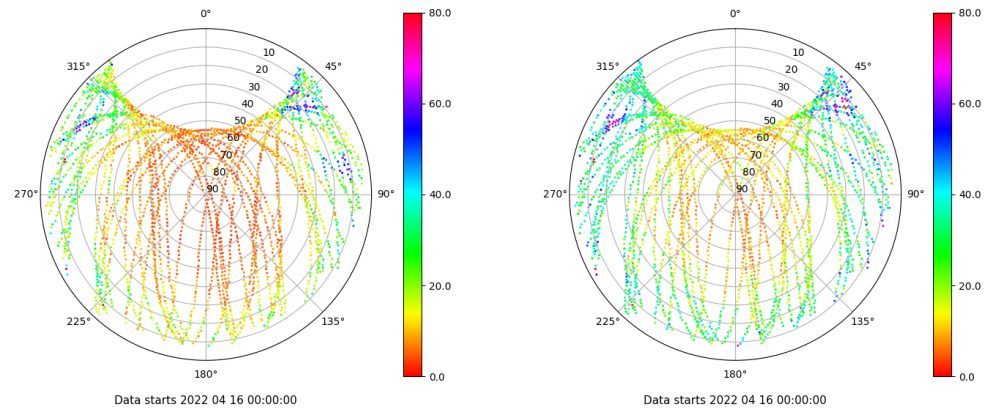
Señal-Ruido GPS L1 y L2

Skyplot for station LPAL. Signal to Noise S1C Data file LPAL00ESP_R_2022106.xtr Skyplot for station LPAL. Signal to Noise S2W Data file LPAL00ESP_R_2022106.xtr



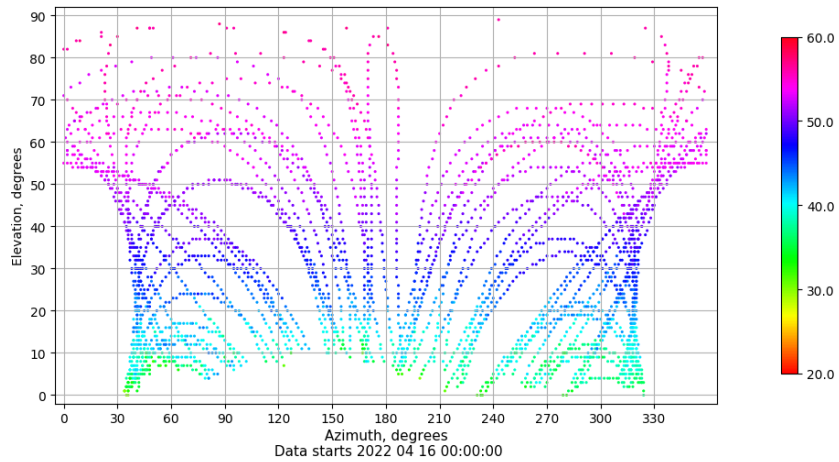
Multipath GPS L1 y L2

Skyplot for station LPAL. Parameter M1C Data file LPAL00ESP_R_2022106.xtr Skyplot for station LPAL. Parameter M2W Data file LPAL00ESP_R_2022106.xtr



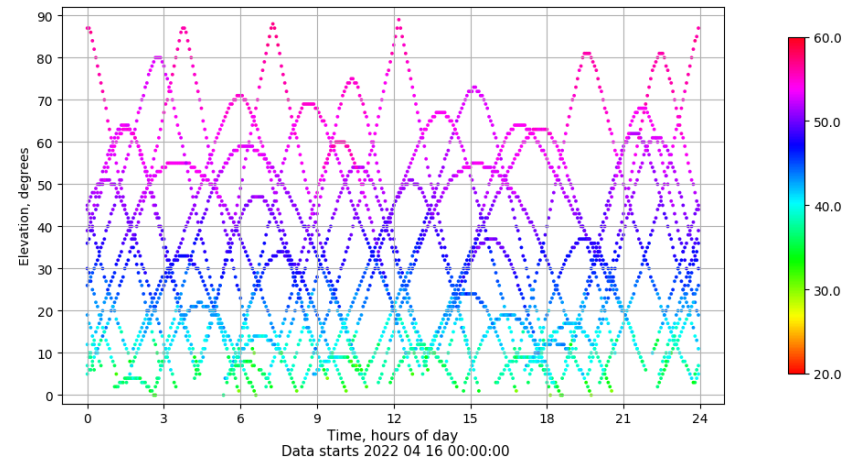
Azimut-Elevacion

Azimuth-elevation plot for station LPAL. Signal to Noise S1C Data file LPAL00ESP_R_2022106.xtr



Tiempo-Elevacion

Time-elevation plot for station LPAL. Signal to Noise S1C Data file LPAL00ESP_R_2022106.xtr

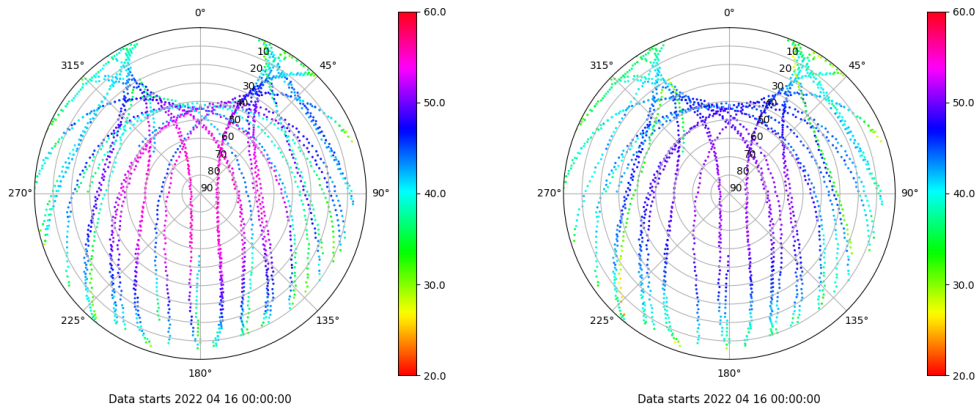


Control de calidad GNSS GLO diario

Estacion: LPAL
 Fecha: 2022 04 16
 Dia del año: 106

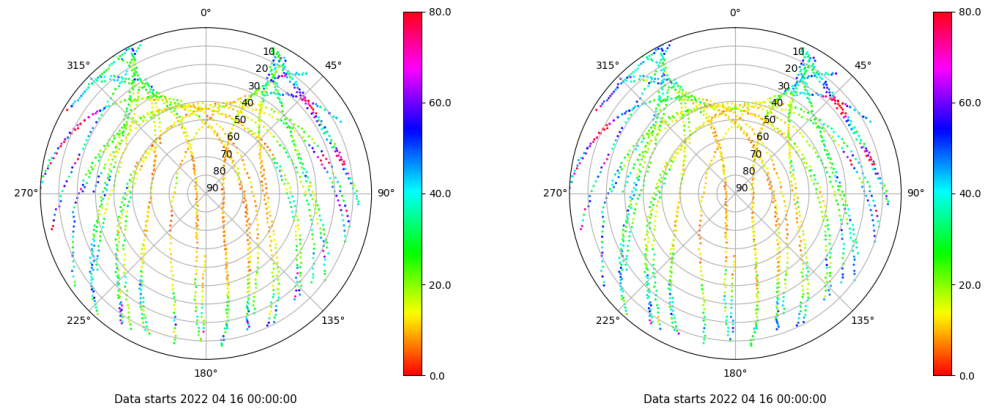
Señal-Ruido GLO L1 y L2

Skyplot for station LPAL. Signal to Noise S1C Data file LPAL00ESP_R_2022106.xtr Skyplot for station LPAL. Signal to Noise S2P Data file LPAL00ESP_R_2022106.xtr



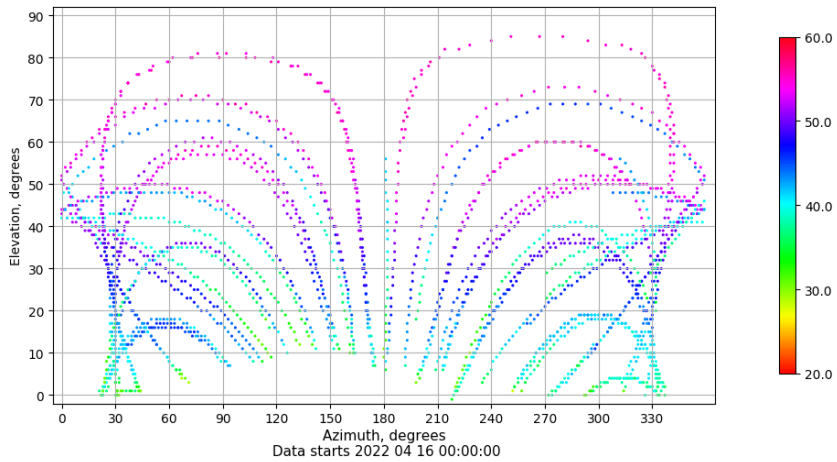
Multipath GLO L1 y L2

Skyplot for station LPAL. Parameter M1C Data file LPAL00ESP_R_2022106.xtr Skyplot for station LPAL. Parameter M2P Data file LPAL00ESP_R_2022106.xtr



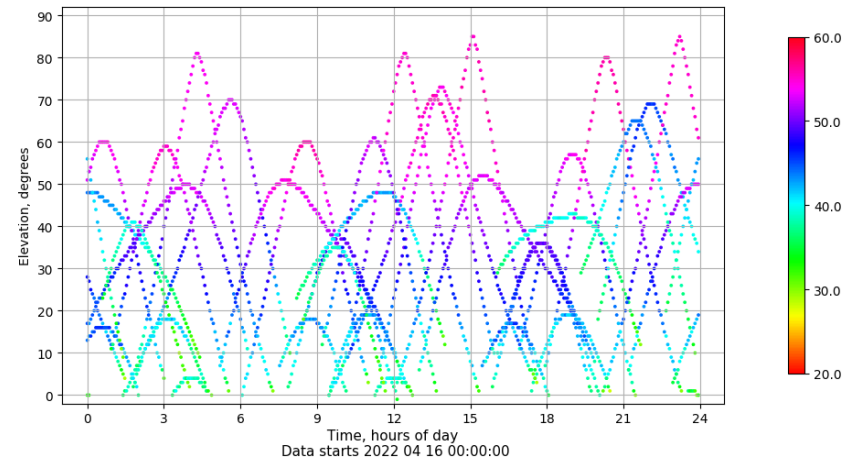
Azimuth-Elevacion

Azimuth-elevation plot for station LPAL. Signal to Noise S1C Data file LPAL00ESP_R_2022106.xtr



Tiempo-Elevacion

Time-elevation plot for station LPAL. Signal to Noise S1C Data file LPAL00ESP_R_2022106.xtr



Control de calidad GNSS GAL diario

Estacion: LPAL

Fecha: 2022 04 16

Día del año: 106

Señal-Ruido GAL E1 y E5

Multipath GAL E1 y E5

No existen gráficos para GAL