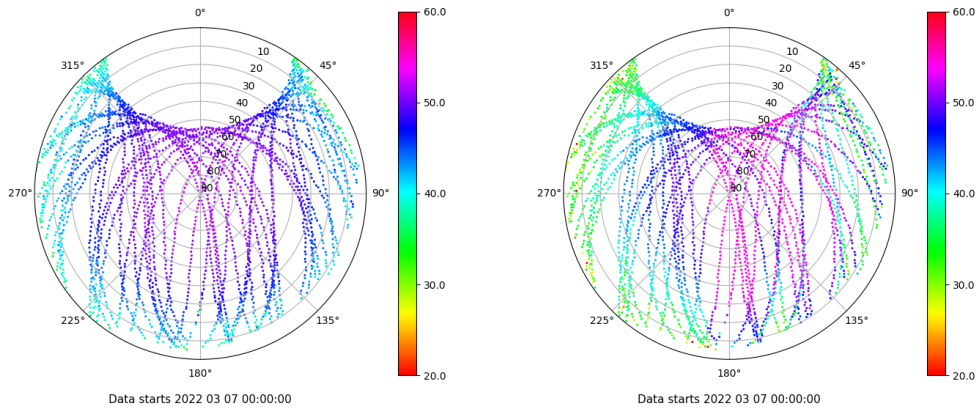


Control de calidad GNSS GPS diario

Estacion: LPAL
 Fecha: 2022 03 07
 Dia del año: 066

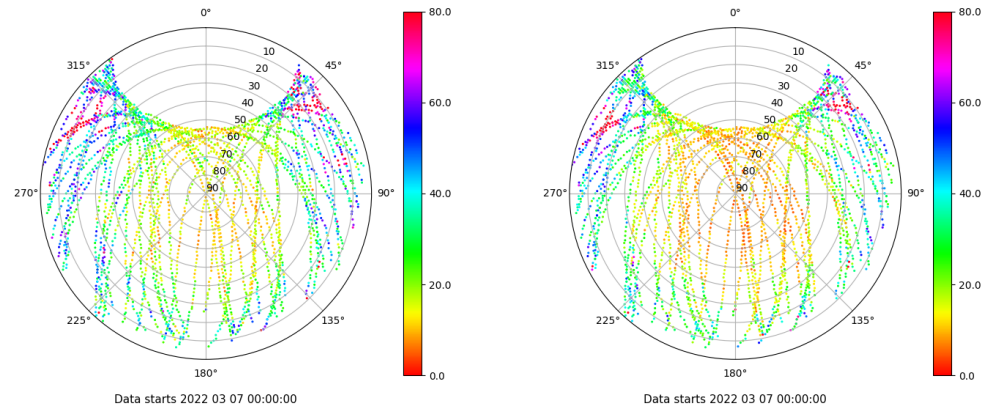
Señal-Ruido GPS L1 y L2

Skyplot for station LPAL. Signal to Noise S1C Data file LPAL00ESP_R_2022066.xtr Skyplot for station LPAL. Signal to Noise S2W Data file LPAL00ESP_R_2022066.xtr



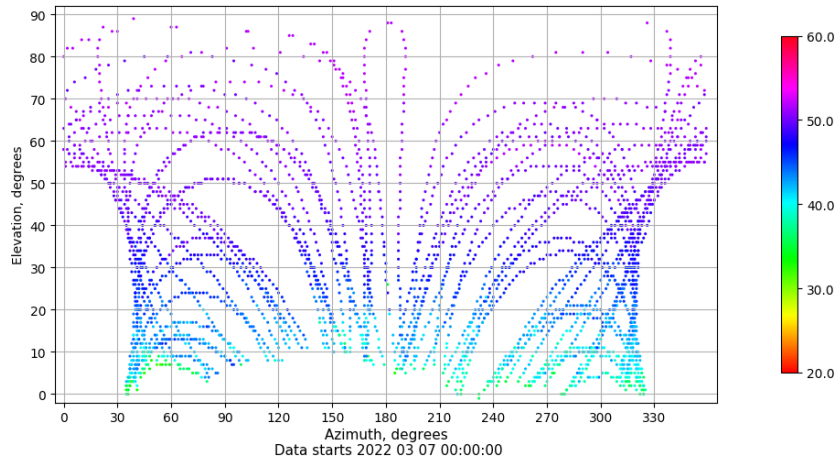
Multipath GPS L1 y L2

Skyplot for station LPAL. Parameter M1C Data file LPAL00ESP_R_2022066.xtr Skyplot for station LPAL. Parameter M2W Data file LPAL00ESP_R_2022066.xtr



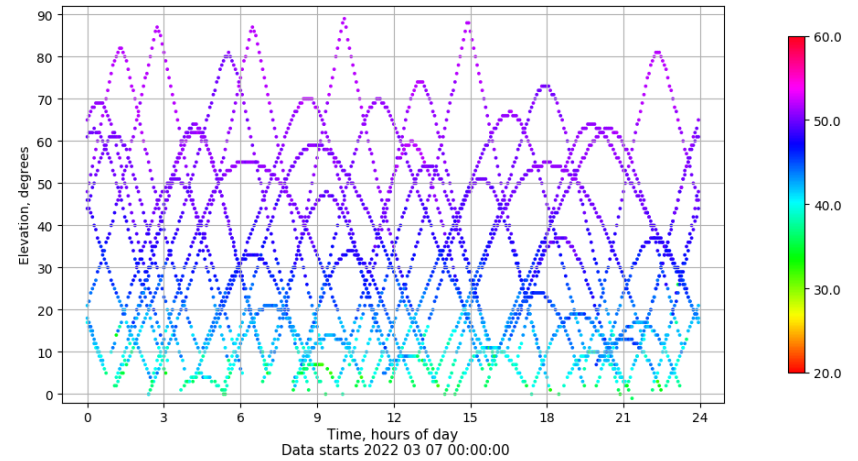
Azimuth-Elevacion

Azimuth-elevation plot for station LPAL. Signal to Noise S1C Data file LPAL00ESP_R_2022066.xtr



Tiempo-Elevacion

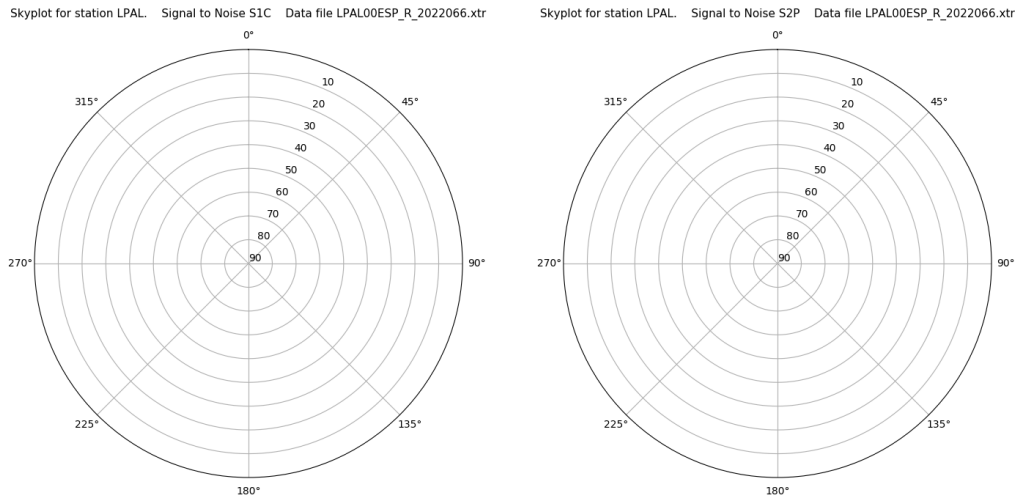
Time-elevation plot for station LPAL. Signal to Noise S1C Data file LPAL00ESP_R_2022066.xtr



Control de calidad GNSS GLO diario

Estacion: LPAL
 Fecha: 2022 03 07
 Dia del año: 066

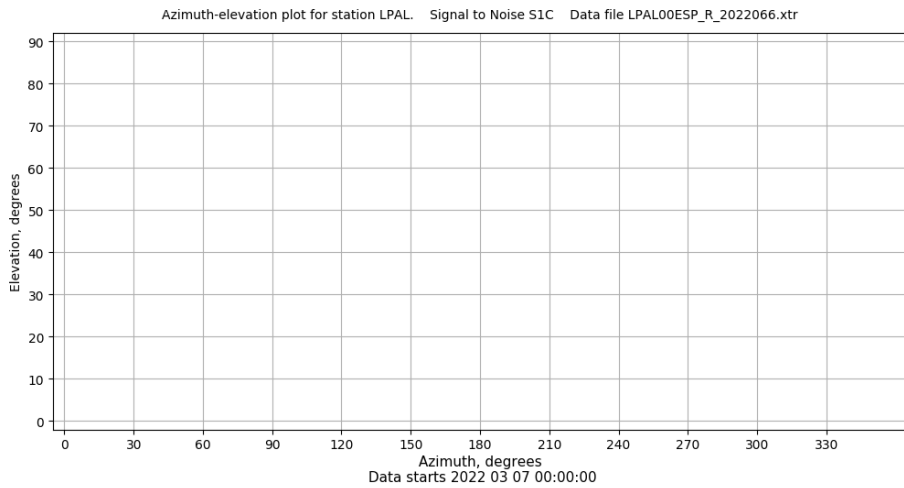
Señal-Ruido GLO L1 y L2



Data starts 2022 03 07 00:00:00

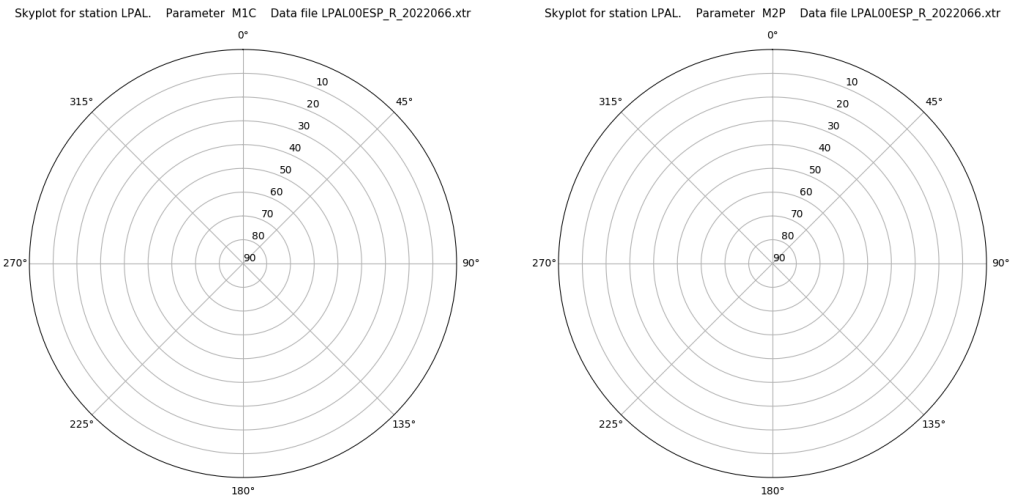
Data starts 2022 03 07 00:00:00

Azimut-Elevacion



Data starts 2022 03 07 00:00:00

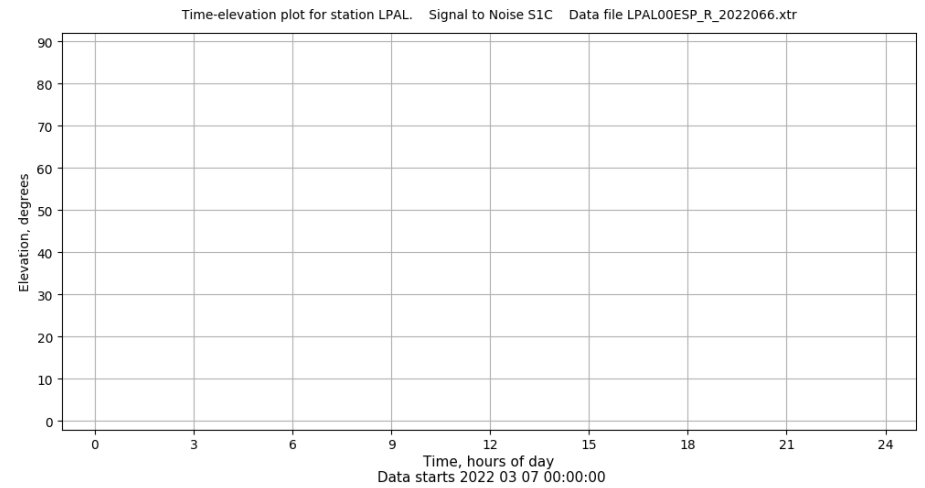
Multipath GLO L1 y L2



Data starts 2022 03 07 00:00:00

Data starts 2022 03 07 00:00:00

Tiempo-Elevacion



Data starts 2022 03 07 00:00:00

Control de calidad GNSS GAL diario

Estacion: LPAL

Fecha: 2022 03 07

Día del año: 066

Señal-Ruido GAL E1 y E5

Multipath GAL E1 y E5

No existen gráficos para GAL