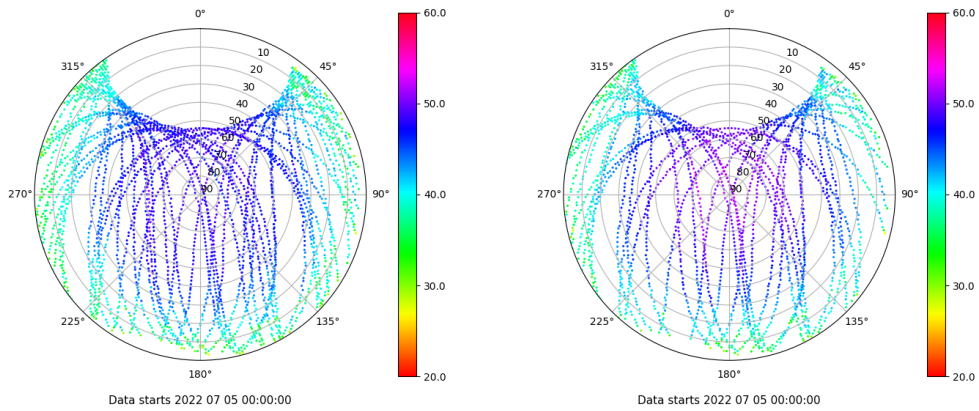


Control de calidad GNSS GPS diario

Estacion: LP01
 Fecha: 2022 07 05
 Dia del año: 186

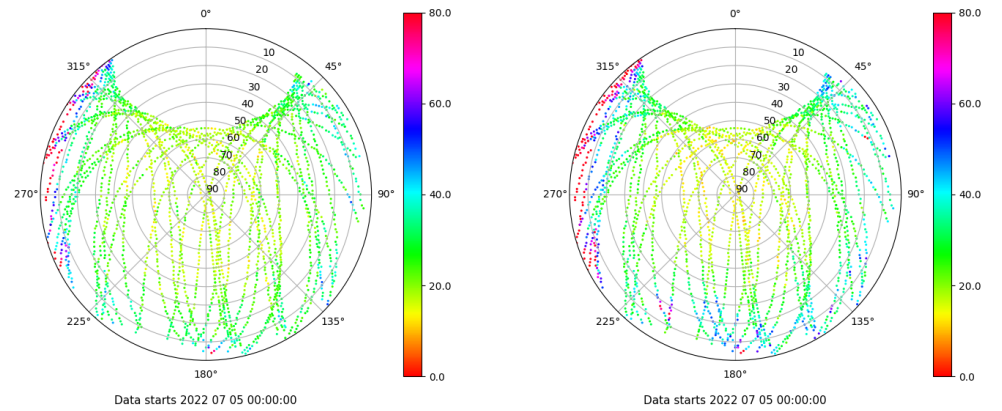
Señal-Ruido GPS L1 y L2

Skyplot for station LP01. Signal to Noise S1C Data file LP0100ESP_R_2022186.xtr Skyplot for station LP01. Signal to Noise S2X Data file LP0100ESP_R_2022186.xtr



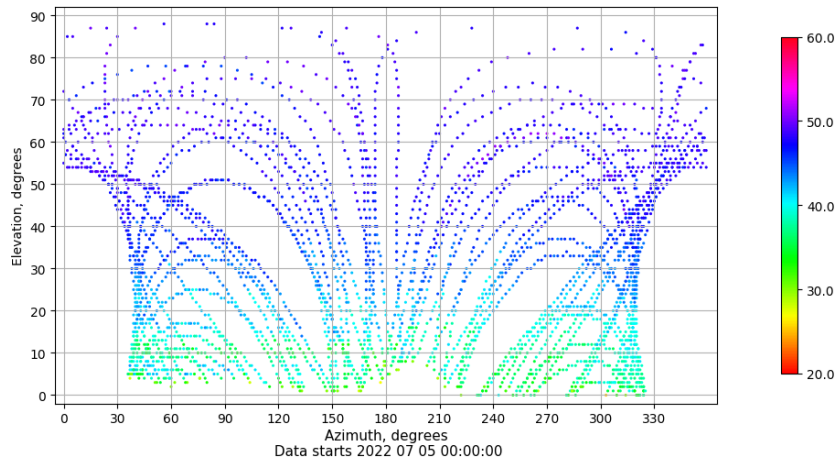
Multipath GPS L1 y L2

Skyplot for station LP01. Parameter M1C Data file LP0100ESP_R_2022186.xtr Skyplot for station LP01. Parameter M2X Data file LP0100ESP_R_2022186.xtr



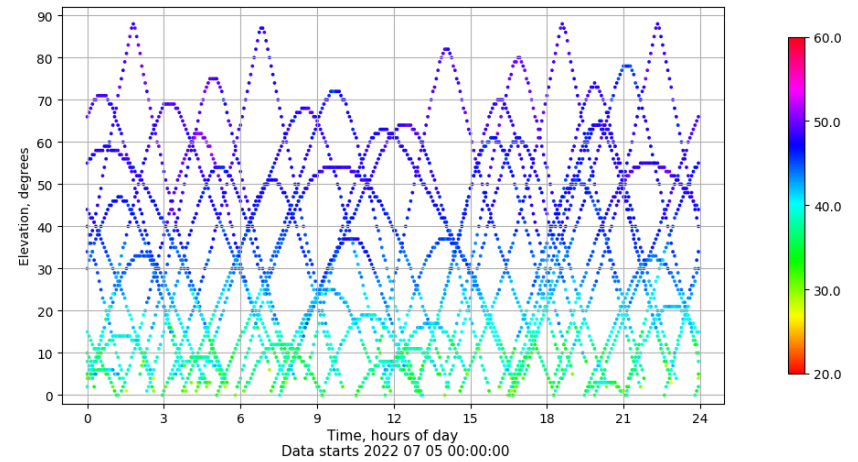
Azimuth-Elevacion

Azimuth-elevation plot for station LP01. Signal to Noise S1C Data file LP0100ESP_R_2022186.xtr



Tiempo-Elevacion

Time-elevation plot for station LP01. Signal to Noise S1C Data file LP0100ESP_R_2022186.xtr

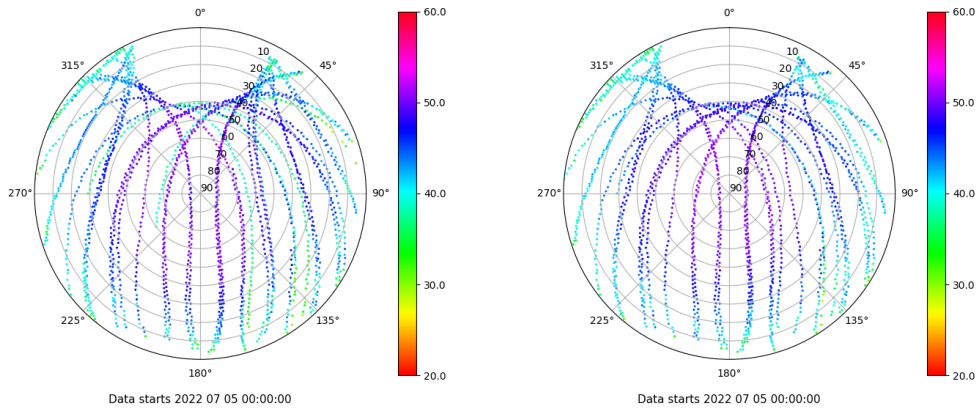


Control de calidad GNSS GLO diario

Estacion: LP01
 Fecha: 2022 07 05
 Dia del año: 186

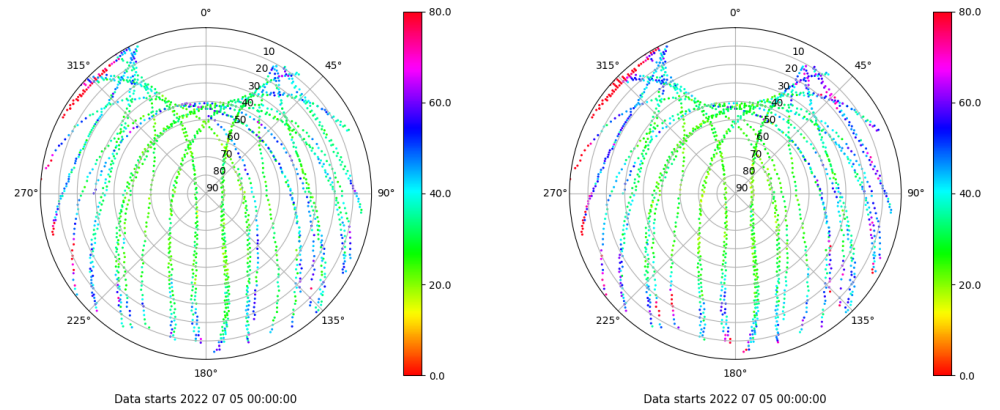
Señal-Ruido GLO L1 y L2

Skyplot for station LP01. Signal to Noise S1C Data file LP0100ESP_R_2022186.xtr Skyplot for station LP01. Signal to Noise S2C Data file LP0100ESP_R_2022186.xtr



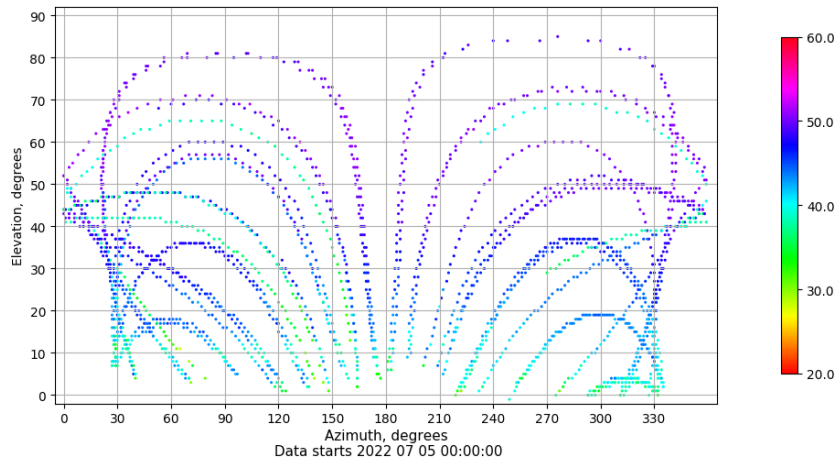
Multipath GLO L1 y L2

Skyplot for station LP01. Parameter M1C Data file LP0100ESP_R_2022186.xtr Skyplot for station LP01. Parameter M2C Data file LP0100ESP_R_2022186.xtr



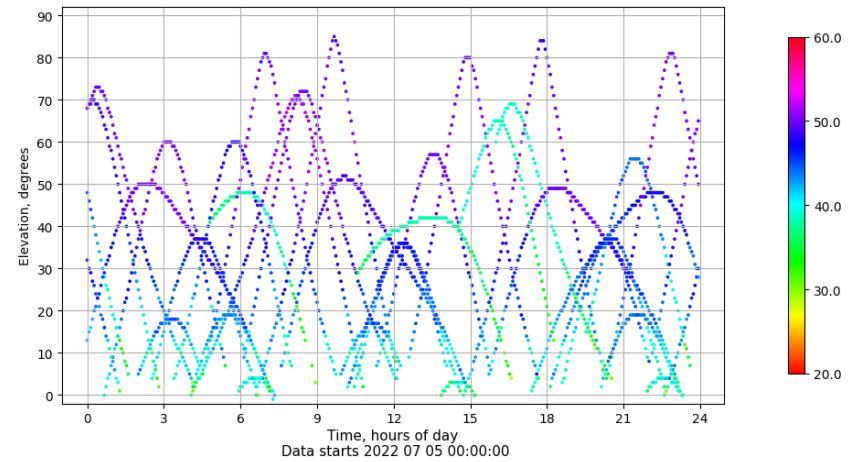
Azimuth-Elevacion

Azimuth-elevation plot for station LP01. Signal to Noise S1C Data file LP0100ESP_R_2022186.xtr



Tiempo-Elevacion

Time-elevation plot for station LP01. Signal to Noise S1C Data file LP0100ESP_R_2022186.xtr



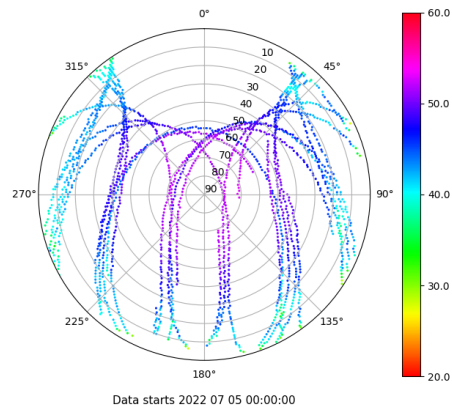
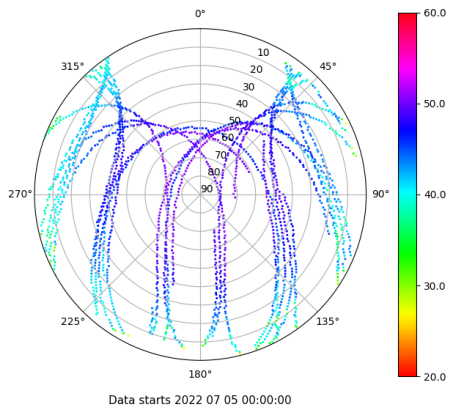
Control de calidad GNSS GAL diario

Estacion: LP01
Fecha: 2022 07 05
Dia del año: 186

Señal-Ruido GAL E1 y E5

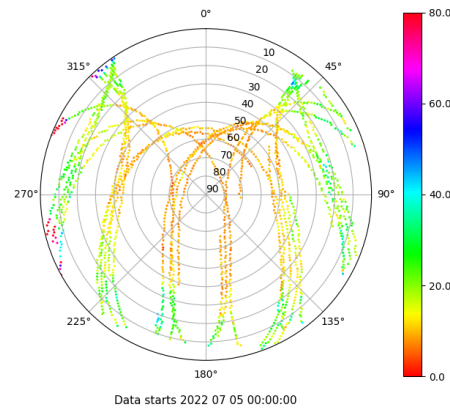
Skyplot for station LP01. Signal to Noise S1X Data file LP0100ESP_R_2022186.xtr

Skyplot for station LP01. Signal to Noise S5X Data file LP0100ESP_R_2022186.xtr



Multipath GAL E1 y E5

Skyplot for station LP01. Parameter M1X Data file LP0100ESP_R_2022186.xtr



No existen gráficos para GAL