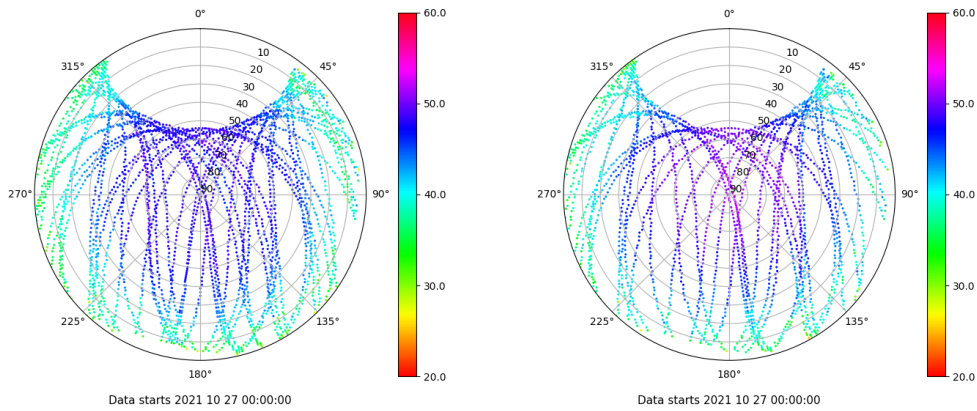


# Control de calidad GNSS GPS diario

Estacion: LP01  
 Fecha: 2021 10 27  
 Dia del año: 300

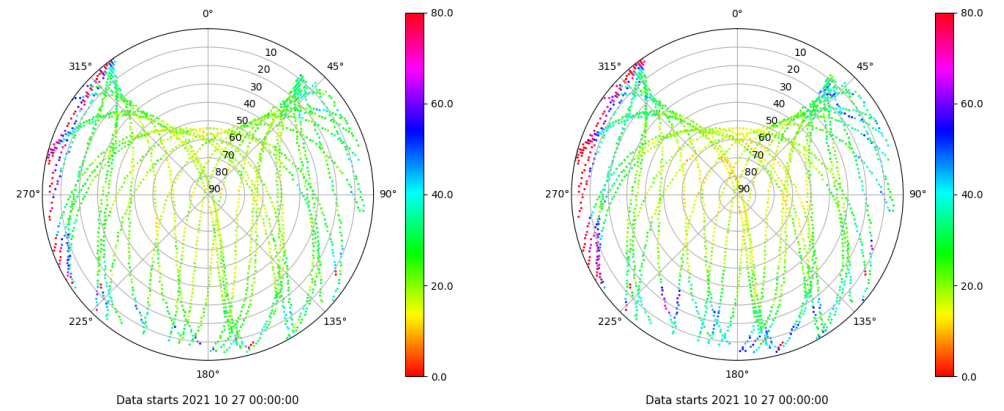
## Señal-Ruido GPS L1 y L2

Skyplot for station LP01. Signal to Noise S1C Data file LP0100ESP\_R\_2021300.xtr Skyplot for station LP01. Signal to Noise S2X Data file LP0100ESP\_R\_2021300.xtr



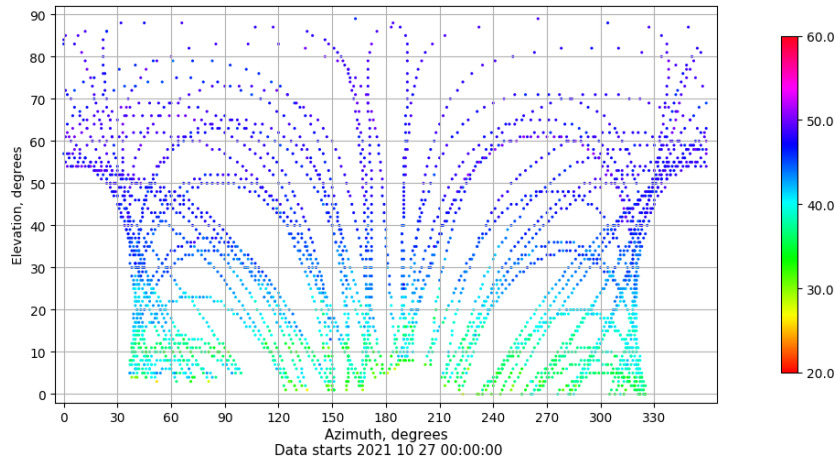
## Multipath GPS L1 y L2

Skyplot for station LP01. Parameter M1C Data file LP0100ESP\_R\_2021300.xtr Skyplot for station LP01. Parameter M2X Data file LP0100ESP\_R\_2021300.xtr



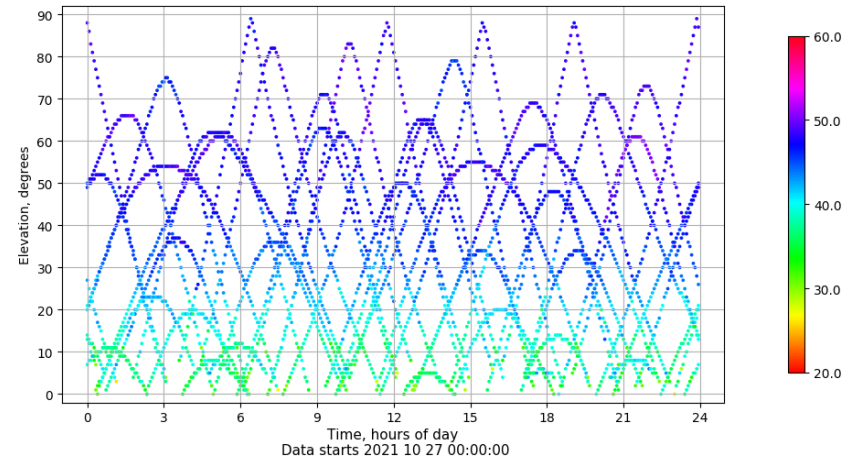
## Azimuth-Elevacion

Azimuth-elevation plot for station LP01. Signal to Noise S1C Data file LP0100ESP\_R\_2021300.xtr



## Tiempo-Elevacion

Time-elevation plot for station LP01. Signal to Noise S1C Data file LP0100ESP\_R\_2021300.xtr

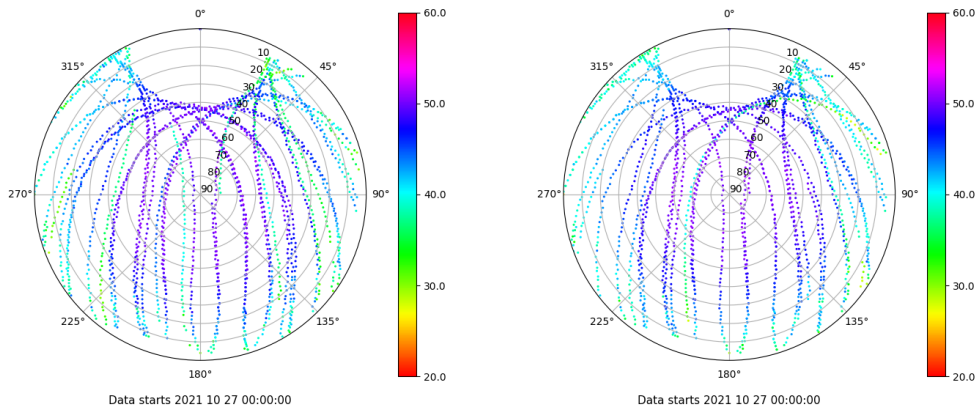


# Control de calidad GNSS GLO diario

Estacion: LP01  
 Fecha: 2021 10 27  
 Dia del año: 300

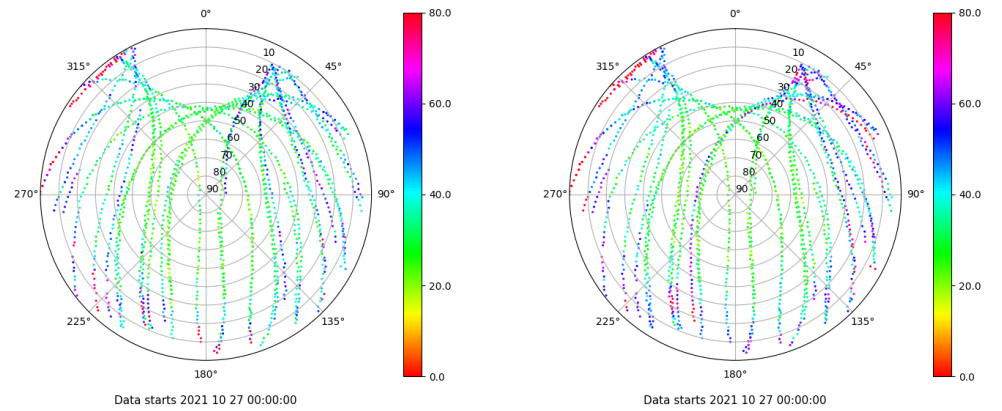
## Señal-Ruido GLO L1 y L2

Skyplot for station LP01. Signal to Noise S1C Data file LP0100ESP\_R\_2021300.xtr Skyplot for station LP01. Signal to Noise S2C Data file LP0100ESP\_R\_2021300.xtr



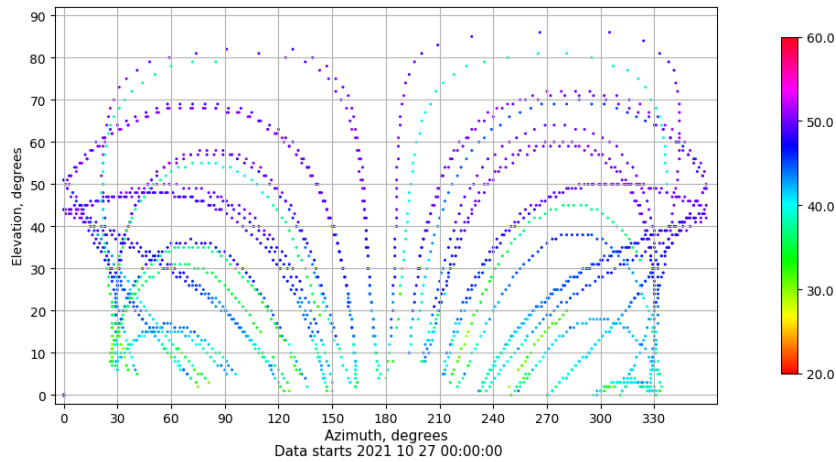
## Multipath GLO L1 y L2

Skyplot for station LP01. Parameter M1C Data file LP0100ESP\_R\_2021300.xtr Skyplot for station LP01. Parameter M2C Data file LP0100ESP\_R\_2021300.xtr



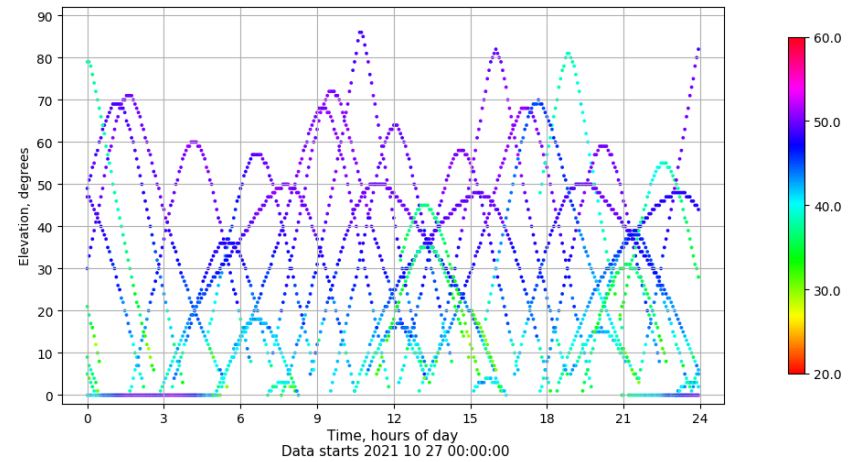
## Azimuth-Elevacion

Azimuth-elevation plot for station LP01. Signal to Noise S1C Data file LP0100ESP\_R\_2021300.xtr



## Tiempo-Elevacion

Time-elevation plot for station LP01. Signal to Noise S1C Data file LP0100ESP\_R\_2021300.xtr



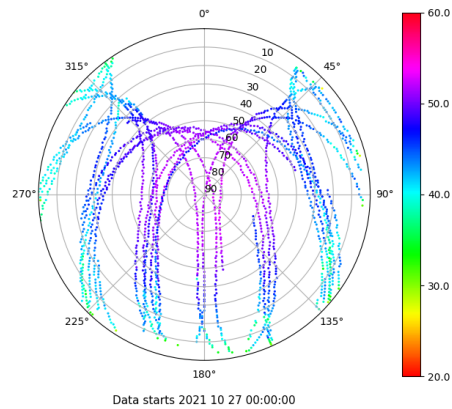
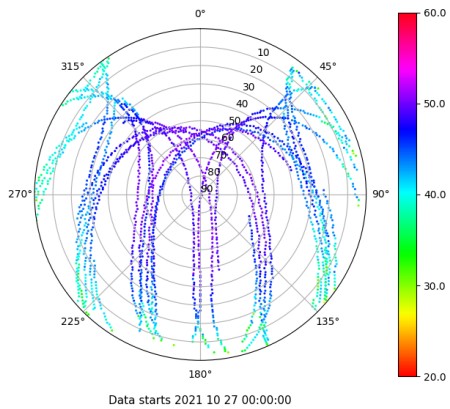
# Control de calidad GNSS GAL diario

Estacion: LP01  
Fecha: 2021 10 27  
Dia del año: 300

## Señal-Ruido GAL E1 y E5

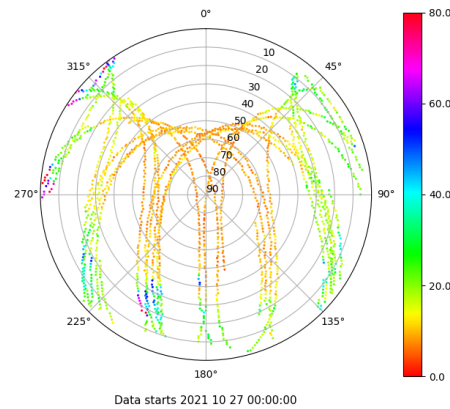
Skyplot for station LP01. Signal to Noise S1X Data file LP0100ESP\_R\_2021300.xtr

Skyplot for station LP01. Signal to Noise S5X Data file LP0100ESP\_R\_2021300.xtr



## Multipath GAL E1 y E5

Skyplot for station LP01. Parameter M1X Data file LP0100ESP\_R\_2021300.xtr



No existen gráficos para GAL